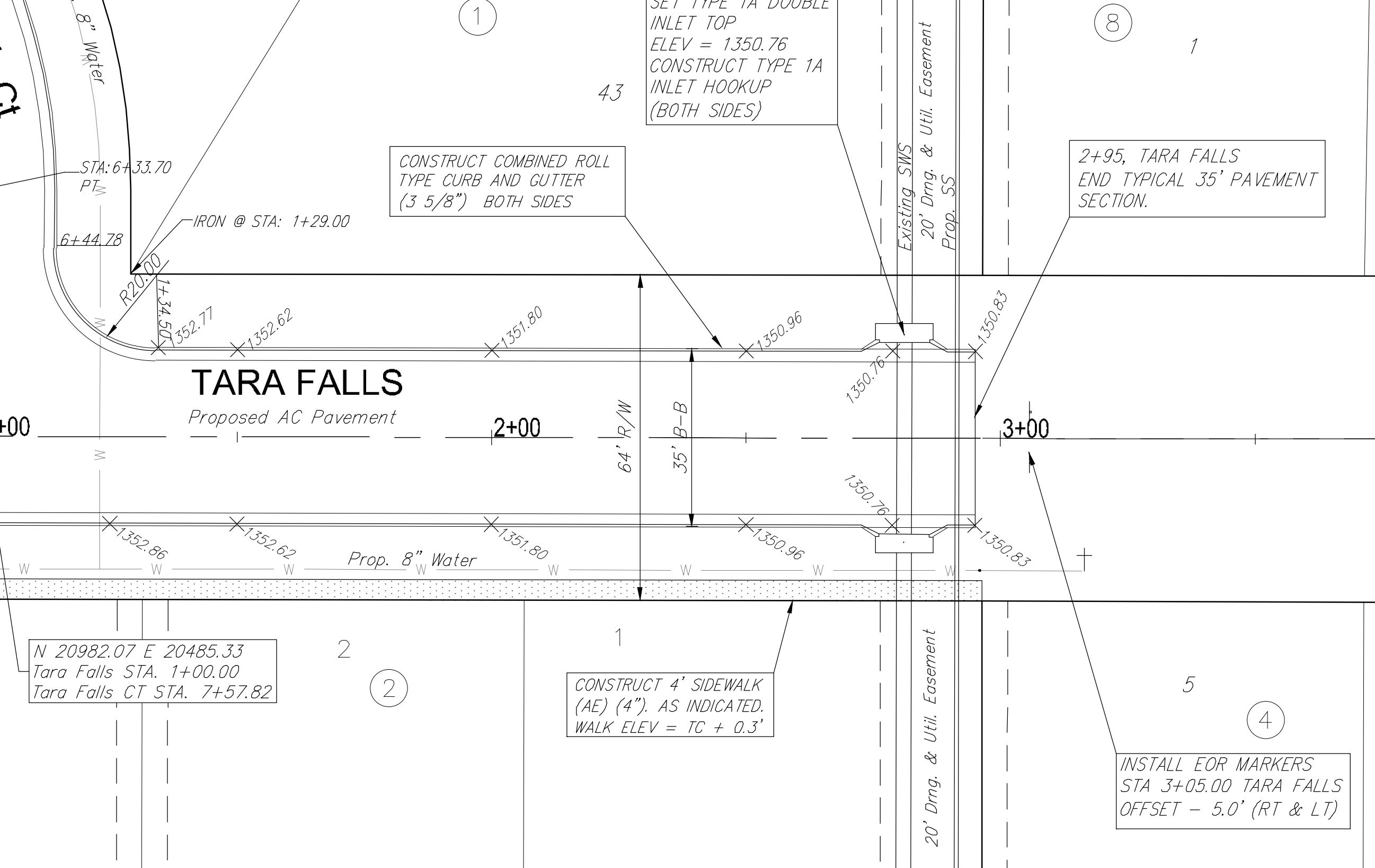
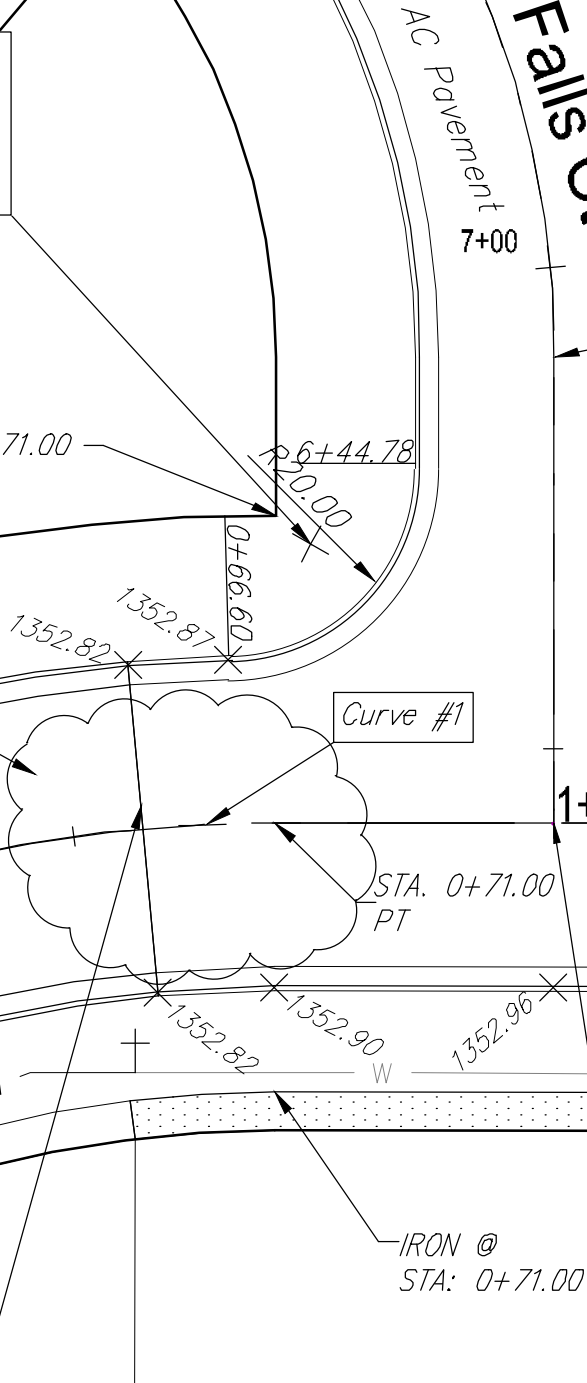


CURVE #1
 Radius = 150.00'
 Delta = 5°15'14"
 Length = 13.76'

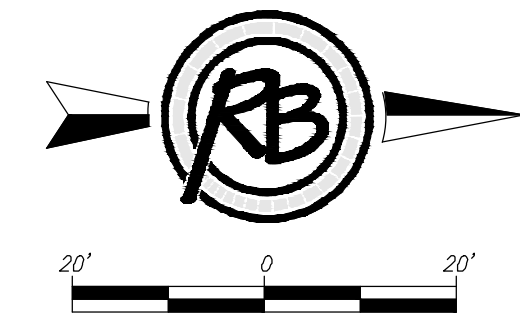
EXISTING CONCRETE RUBBLE
 TO BE REMOVED. COST
 SUBSIDIARY TO BID ITEM
 FOR SITE CLEARING.

STA. 0+63.29' LT.
 INSTALL SNS
 "TARA FALLS
 TARA FALLS CT"

0+57.25, TARA FALLS
 BEGIN TYPICAL 35' PAVEMENT SECTION.
 SAW CUT EXISTING ASPHALT TO A
 NEAT LINE (35 LF). REMOVE EXISTING
 EOR MARKERS

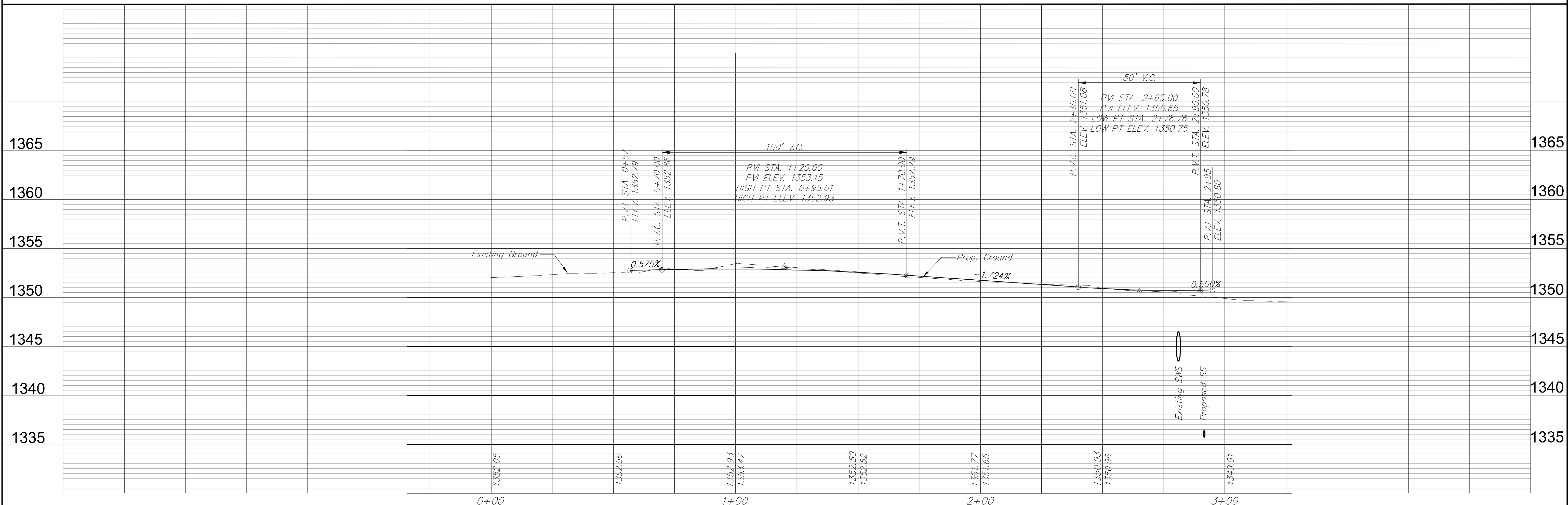


Casa Bella Addition



FOR 35' B-B PAVEMENT
 TC ELEV. = \bar{C} ELEV. + 0.03'

Proposed Top of Curb Elev
 (Full Height Curb Elevation)



RUGGLES BOHM
 ENGINEERING & SURVEYING
 1000 W. 17th St., Suite 100
 Wichita, Kansas 67202
 Phone: 316-261-1111
 Fax: 316-261-1112
 Website: www.rugglesbohm.com

**CASA BELLA PH. 3 PAVING
 TARA FALLS
 WICHITA, KANSAS**

PROJECT NUMBER: 472-84338
 DRAWING FILE: TARA FALLS
 ENGINEERING BASE: Tara Falls

DESIGN	REVISION
E.G.	REVISED
UTILITY	E.G.
	DATE
	REVIEW
	DATE
	REVIEW
	DATE
	REVIEW
	DATE
	REVIEW
	DATE
	REVIEW
	DATE

RB JOB: 4190E
 SHEET: 5 of 21
 DATE: June 3, 2014
 REVIEW: May 5, 2014