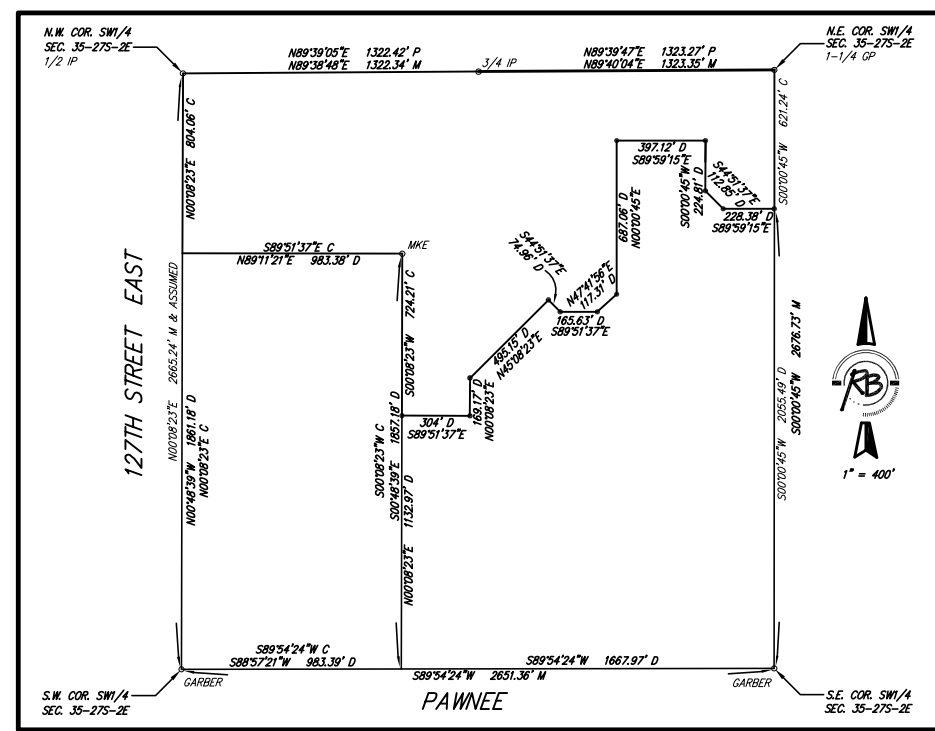
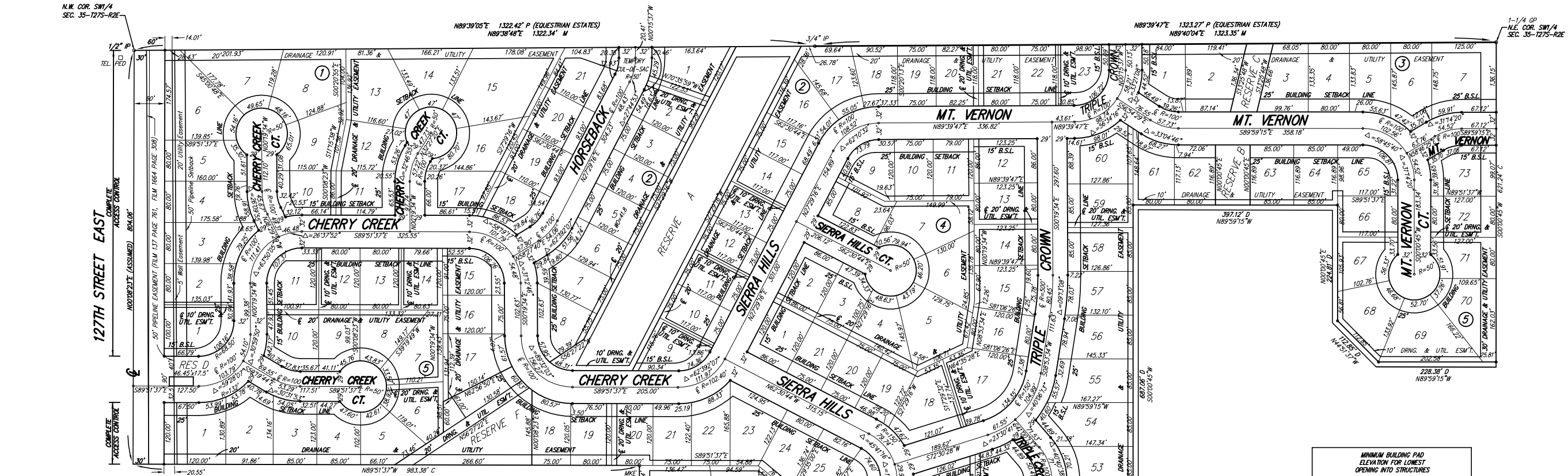


# SIERRA HILLS

## An Addition to Wichita, Sedgwick County, Kansas



BLOCK	LOT NO.	ELEVATION (N.G.V.D.)
2	1, 2, 3, 4, 13	1338.5
	14, 15, 16, 17	1341.0
	5, 6, 7, 8	1344.0
	9, 10, 11, 12	1344.0
5	40, 41, 42, 43, 44	1344.0
	54, 55, 56, 57, 58	1335.5
	59, 61, 62, 63, 64	1335.5
	65, 66, 67, 68	1335.5

BENCH MARK #1: R.R. SPIKE 32.39' E. & 40.87' N. OF THE CENTERLINE INTERSECTION PAMNEE AVENUE & 127TH STREET EAST  
ELEV.=1348.62 (NGVD) = 161.22 (CITY DATUM)

BENCH MARK #2: SRB BRASS DISC 1008.17' E. & 55.63' N. OF THE CENTERLINE INTERSECTION PAMNEE AVENUE & 127TH STREET EAST  
ELEV.=1338.63 (NGVD) = 149.23 (CITY DATUM)

BENCH MARK #3: SRB BRASS DISC 55.45' E. & 5.13' S. OF THE N.W. COR., SW1/4, SEC. 35, 275, R2E  
ELEV.=1348.35 (NGVD) = 160.95 (CITY DATUM)



- SURVEY MARKER LEGEND**
- 1-1/4 GP = 1-1/4" GALVANIZED PIPE (FOUND)
  - 1/2 IP = 1/2" IRON PIPE (FOUND)
  - 3/4 IP = 3/4" IRON PIPE (FOUND)
  - = 5/8" REBAR W/MKE CAP (FOUND)
  - = 5/8" REBAR W/GARBER CAP (FOUND)
  - \* = 5/8" REBAR W/RAB CAP (SET)

REVISED

**SIERRA HILLS ADDITION  
FINAL PLAT  
WICHITA, KANSAS**

**Ruggles & Bohm, P.A.**  
Engineering, Surveying, Land Planning

924 North Main  
Wichita, Kansas 67203  
www.rtkansas.com

(316) 264-8008  
(316) 264-4621 fax  
E-mail: info@rtkansas.com

DESIGN: R/J/MS  
DRAWN: RC  
REVIEW: [blank]  
UTILITY: [blank]

DRAWING FILE Phase 1..Son...Sewer.dwg	PROJECT NUMBER 468-83583	DATE 05/01/2002
--	-----------------------------	--------------------

SHEET  
23  
OF  
23