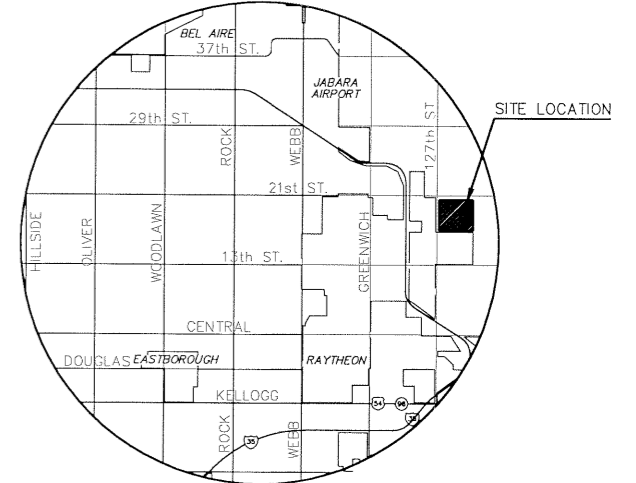


LAKE GRADING PLANS FOR
STORM WATER DRAIN #204
 IN
REED'S COVE ADDITION

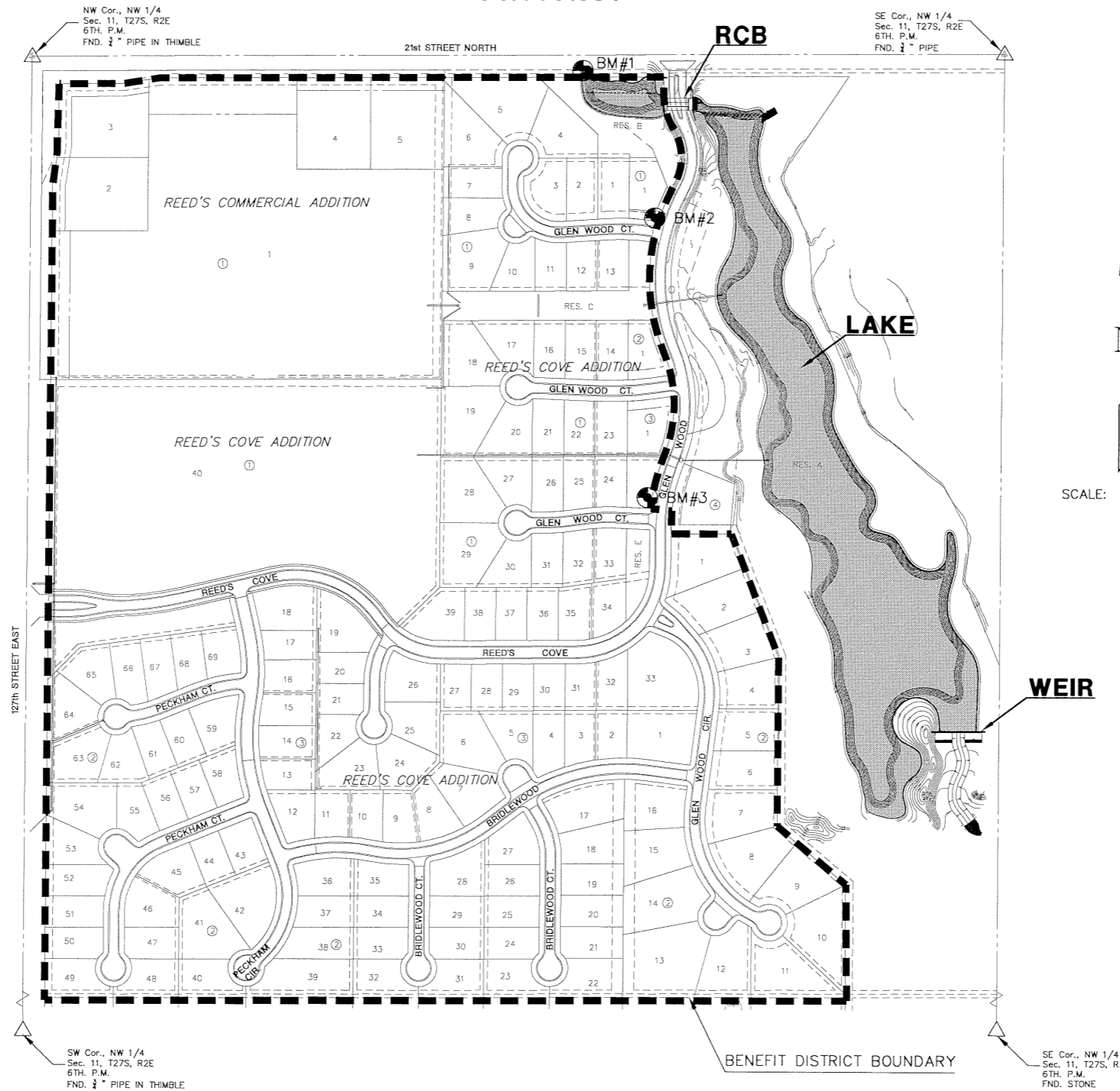
AN ADDITION TO THE CITY OF WICHITA
 SEDGWICK COUNTY, KANSAS
PROJECT NO. 468-83625
 NEIL D. CABLE, CITY ENGINEER
OCA 751334



LOCATION MAP

GENERAL NOTES

- UNLESS SHOWN OR OTHERWISE STATED ON THESE DRAWINGS, MATERIALS AND CONSTRUCTION SHALL BE IN ACCORDANCE WITH THE CITY OF WICHITA STANDARD SPECIFICATIONS.
- THE TOPS OF INLETS AND MANHOLES AS NOTED ON THE PLANS MAY VARY SO AS TO MEET PROPOSED TOP OF CURB ELEVATIONS OR PAVEMENT ELEVATIONS. THE FIELD ENGINEER SHALL LOCATE INLETS AND MANHOLES WITH REFERENCE TO PROPOSED PAVING PLANS OF THE PERTINENT STREETS.
- ALL CONCRETE SHALL BE STANDARD PAVING MIX UNLESS OTHERWISE NOTED.
- THE CONTRACTOR SHALL BE RESPONSIBLE FOR PRESERVING PROPERTY IRONS. THE CONTRACTOR SHALL BE REQUIRED TO RE-ESTABLISH ANY PROPERTY IRONS WHICH ARE DAMAGED OR DESTROYED BY HIS CONSTRUCTION OPERATIONS. SUCH IRONS SHALL BE RE-ESTABLISHED BY A LICENSED LAND SURVEYOR IN ACCORDANCE WITH STATE LAWS.
- TREES TO BE REMOVED ARE MARKED . ALL TREES WHICH IN THE OPINION OF THE FIELD ENGINEER CAN BE SAVED, SHALL BE SAVED.
- CONTRACTOR SHALL NOTIFY UTILITY COMPANIES OF CONSTRUCTION SCHEDULING.
- EXISTING UTILITIES AND THEIR LOCATIONS, AS SHOWN ON THE PLANS REPRESENT THE BEST INFORMATION OBTAINABLE FOR DESIGN. LOCATION INFORMATION HAS BEEN OBTAINED FROM THE VARIOUS COMPANIES AND IS EITHER FROM COMPANY UTILITY DRAWINGS OR COMPANY PROVIDED FIELD LOCATIONS. THE PLAN LOCATIONS SHOWN ARE NOT GUARANTEED. ADDITIONAL EXISTING UTILITIES MAY ALSO BE ENCOUNTERED.
- CONTRACTOR WILL BE REQUIRED TO PROVIDE A MINIMUM ADVANCE NOTICE OF FORTY-EIGHT (48) HOURS TO UTILITY COMPANIES TO STARTING ANY EXCAVATION AS FOLLOWS:
 KANSAS ONE-CALL 800-344-7233
 OR 687-2470 (LOCAL WICHITA)
 THE CONTRACTOR MUST NOTIFY THE FOLLOWING IN CASE OF EMERGENCY:
 COX COMMUNICATION 263-0661
 WESTAR ENERGY 261-6512
 SBC 1-800-870-8390
 CITY OF WICHITA WATER & SEWER 262-6000
 COOPERATIVE REFINERY PIPELINE 1-800-982-4112
 KANSAS GAS SERVICE 832-3101
- RUBBLE FROM THE REMOVAL OF MISCELLANEOUS STRUCTURES AND EXCESS EXCAVATION WHICH IS TO BE WASTED SHALL BE DISPOSED OF ON SITES TO BE PROVIDED BY THE CONTRACTOR. THESE SITES SHALL BE APPROVED BY THE ENGINEER AS TO SUITABILITY, APPEARANCE AND SITE LOCATION. LOCATIONS THAT, IN THE OPINION OF THE ENGINEER, WILL LEAVE AN UNSIGHTLY APPEARANCE WILL NOT BE APPROVED. ALL DISPOSAL SITES MUST BE APPROVED BY THE KANSAS DEPARTMENT OF HEALTH AND ENVIRONMENT. MATERIAL EITHER STOCKPILED OR DISPOSED OF IN A FLOOD PLAIN WOULD REQUIRE A KANSAS STATE BOARD OF AGRICULTURE PERMIT. ANY MATERIAL DUMPED IN WATERS OF THE UNITED STATES OR WETLANDS IS SUBJECT TO U.S. CORPS OF ENGINEERS PERMITTING REGULATIONS. ANY MATERIAL BURIED OR STOCKPILED BEYOND APPROVED CONSTRUCTION LIMITS WOULD REQUIRE ADDITIONAL ARCHAEOLOGICAL INVESTIGATIONS UNLESS BURIED IN A PREVIOUSLY APPROVED BORROW LOCATION.
- CONTRACTOR SHALL RESEED AND MULCH ALL DISTURBED AREAS. COST SHALL BE CONSIDERED SUBSIDIARY TO BID ITEM "PROJECT SEEDING". (SEE SHEET 17)



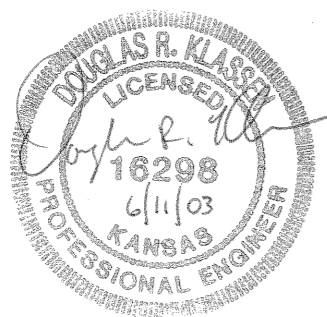
SCALE: 1" = 200'

INDEX TO DRAWINGS

SHEET NO.	DESCRIPTION
1	TITLE SHEET
2	GRADING DETAILS
3-5	LAKE GRADING
6	RCB PLAN & PROFILE
7-12	RCB DETAILS
13	LAKE WEIR PLAN
14	STREAM BED PLAN & PROFILE
15-16	GABION STREAM BED (ALT)
17	EROSION CONTROL & SEEDING
18	ROAD & LOT GRADING
19-22	BMP DETAILS
23-34	CROSS SECTIONS
35-36	FINAL PLAT

BENCHMARKS

- BM 1 1351.770 SQUARE CUT W. END OF S. HEADWALL OF RCB UNDER 21ST ST. N., 1506'+/- E. & 25' +/- S. OF NW COR SEC 11, T 27 S, R 2 E.
- BM 2 1351.79 "T" POST 10'+/- N. & 10'+/- W. OF SE COR RES. "B", REED'S COVE.
- BM 3 1352.66 "T" POST 30'+/- N. & 10' +/- W. OF SE COR RES. "D", REED'S COVE.



H:\CIVIL\C2121\Draw\GRAD\Lake\02121_DT.DWG 03/14/2003 04:25:57 PM CST

REED'S COVE ADDITION
 PROJECT NAME

LAKE GRADING & STORM WATER DRAIN PLANS
 SHEET TITLE

DFL
DESIGN BY:

JUNE 2003
DATE

DMU
DRAWN BY:

02121_DT
DRAWING NAME

GJA
CHECKED BY:

1 / 36
SHEET / OF

411 N. WEBB ROAD
 WICHITA, KS. 67206
 316 - 684 - 9600