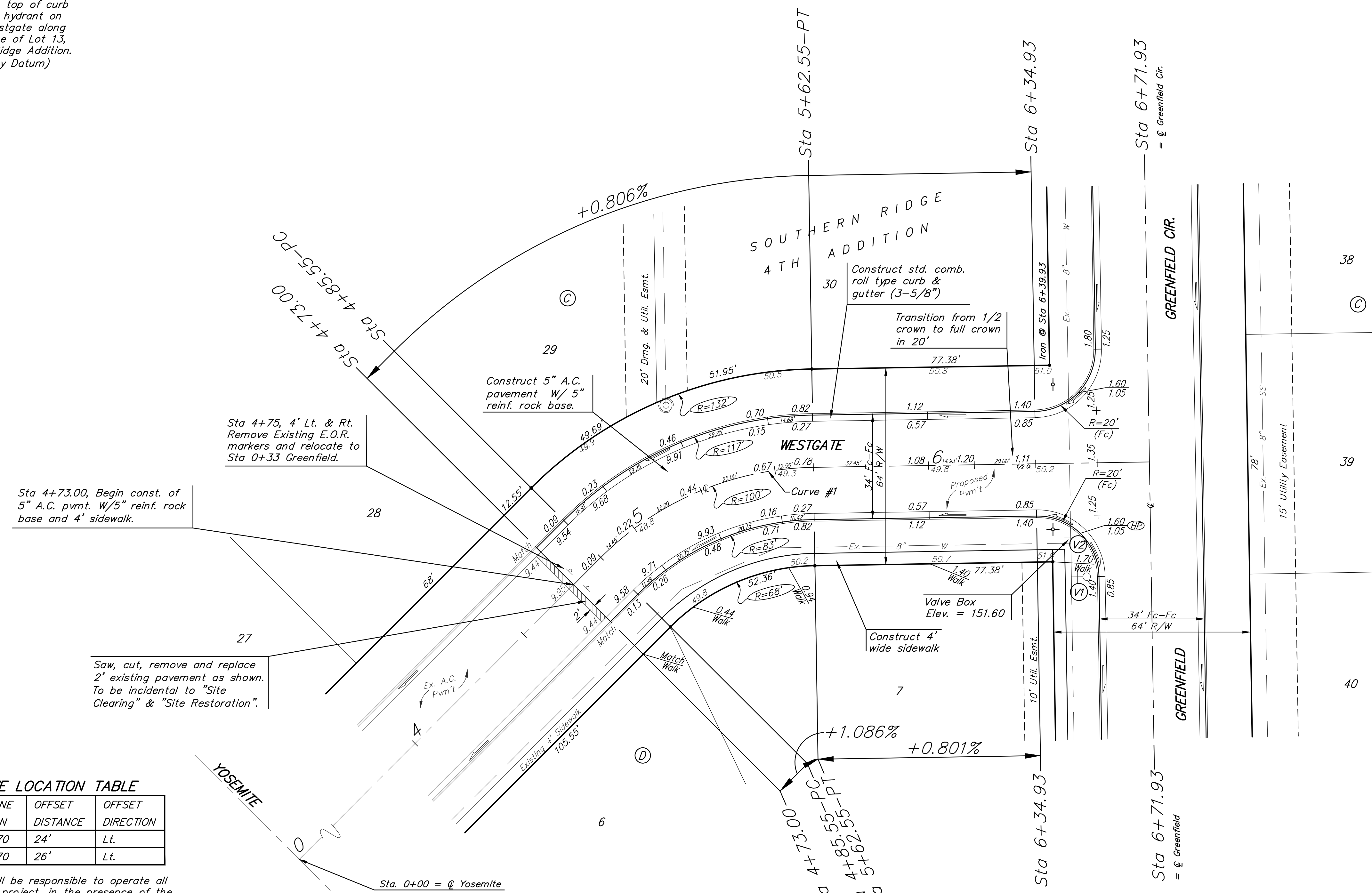


BENCHMARKS:
 BM #1: COW Disc in top of curb adjacent to the fire hydrant at the SW corner of Yosemite and Lamp Cir.
 Elev. = 146.73 (City Datum)

BM #2: COW Disc in top of curb adjacent to the fire hydrant on the west side of Westgate along the southwesterly line of Lot 13, Block B, Southern Ridge Addition.
 Elev. = 144.10 (City Datum)

Scale: 1" = 20'
 • = Iron



Sta 4+73.00, Begin const. of 5" A.C. pvm't. W/ 5" reinf. rock base and 4' sidewalk.

Sta 4+75, 4' Lt. & Rt. Remove Existing E.O.R. markers and relocate to Sta 0+33 Greenfield.

Saw, cut, remove and replace 2' existing pavement as shown. To be incidental to "Site Clearing" & "Site Restoration".

P.V.I.
 Elev. = 150.82
 No V.C.

WATER VALVE LOCATION TABLE

VALVE NUMBER	BASELINE STATION	OFFSET DISTANCE	OFFSET DIRECTION
V1	2+77.70	24'	Lt.
V2	2+90.70	26'	Lt.

Paving contractor will be responsible to operate all water valves on the project, in the presence of the inspector, to ensure accessibility to the valves, and that all valves are left in the "ON" position when the project is completed."

Subdivision Bench Marks

Street & Station	Location Description	Elevation
Yosemite 2+67.00, 17.25' Rt.	Adjacent to Fire Hydrant at W. End of W. Curb Return of Yosemite & Westgate.	
Greenfield 2+77.70, 17.25' Lt.	Adjacent to Fire Hydrant at W. End of W. Curb Return of Greenfield & Westgate.	

Curve #1
 Curve Data Based on Centerline
 Rad. = 100' Delta = 44°07'02" Tangent = 40.52'
 Arc = 77' L.C. = 75.11' Def/Ft. = 17.18853 Min.

Station	Arc	FACE CHORD LENGTHS		Defl.	T. Defl.
		8' Lt.	8' Rt.		
4+85.55	-	-	-	0°00'00"	0°00'00"
5+00.00	14.45'	18.05'	10.83'	4°08'22"	4°08'22"
5+25.00	25.00'	31.17'	18.70'	7°09'43"	11°18'05"
5+50.00	25.00'	31.17'	18.70'	7°09'43"	18°27'48"
5+62.55	12.55'	15.68'	9.41'	3°35'43"	22°03'51"



NOTE: ROLL TYPE CURB & GUTTER TO BE CONSTRUCTED ON THE PAVEMENT SHOWN ON THIS SHEET. TOP OF CURB ELEVATIONS ARE GIVEN FOR FULL HEIGHT CURB.

Baughman ENGINEERING | SURVEYING | PLANNING | LANDSCAPE ARCHITECTURE
 315 Ellis St. Wichita, KS 67211 P: 316.262.7271 F: 316.262.0149
 PROJECT NUMBER: 472-85045
 DESIGN: AEG
 DRAWN: TMS
 APPROVED: [Signature]
 DATE: 04/14
 SCALE: Noted
 SHEET: 6 OF 18