

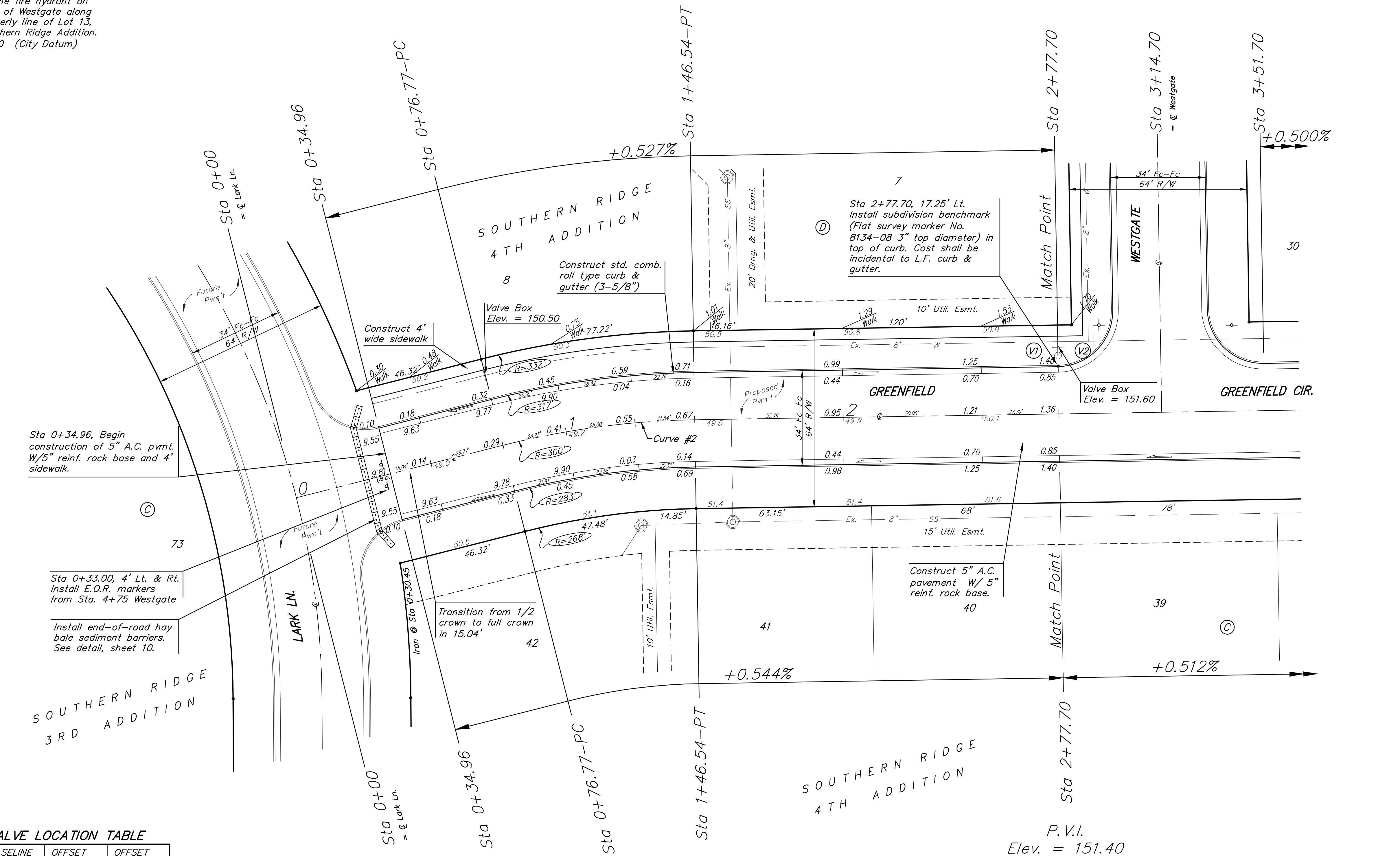
BENCHMARKS:
 BM #1: COW Disc in top of curb adjacent to the fire hydrant at the SW corner of Yosemite and Lamp Cir.
 Elev. = 146.73 (City Datum)

BM #2: COW Disc in top of curb adjacent to the fire hydrant on the west side of Westgate along the southwesterly line of Lot 13, Block B, Southern Ridge Addition.
 Elev. = 144.10 (City Datum)

Curve #2
 Curve Data Based on Centerline
 Rad. = 300' Delta = 13° 19' 33" Tangent = 35.05'
 Arc = 69.77' L.C. = 69.62' Def/Ft. = 5.72990 Min.

Station	Arc	FACE CHORD LENGTHS		Defl.	T. Defl.
		8' Lt.	8' Rt.		
0+76.77	-	-	-	0°00'00"	0°00'00"
1+00.00	23.23'	25.16"	21.29"	2°13'06"	2°13'06"
1+25.00	25.00'	27.08"	22.91"	2°23'15"	4°36'21"
1+46.54	21.54'	23.33"	19.74"	2°03'25"	6°39'46"

Scale: 1" = 20'
 • = Iron



Sta 0+34.96, Begin construction of 5" A.C. pvmt. W/5" reinf. rock base and 4' sidewalk.

Sta 0+33.00, 4' Lt. & Rt. Install E.O.R. markers from Sta. 4+75 Westgate

Install end-of-road hay bale sediment barriers. See detail, sheet 10.

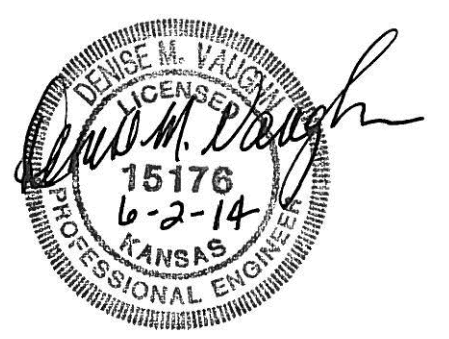
WATER VALVE LOCATION TABLE

VALVE NUMBER	BASELINE STATION	OFFSET DISTANCE	OFFSET DIRECTION
V1	2+77.70	24'	Lt.
V2	2+90.70	26'	Lt.

Paving contractor will be responsible to operate all water valves on the project, in the presence of the inspector, to ensure accessibility to the valves, and that all valves are left in the "ON" position when the project is completed.

P.V.I.
 Elev. = 151.40
 No V.C.

NOTE: ROLL TYPE CURB & GUTTER TO BE CONSTRUCTED ON THE PAVEMENT SHOWN ON THIS SHEET. TOP OF CURB ELEVATIONS ARE GIVEN FOR FULL HEIGHT CURB.



	SOUTHERN RIDGE 4TH ADDITION - PH. 2B	
	GREENFIELD STA 0+00 TO STA 2+77.70	
<small>Baughman Company, P.A. 313 Ellis St. Wichita, KS 67211 F 316-262-2271 F 316-262-0149 ENGINEERING SURVEYING PLANNING LANDSCAPE ARCHITECTURE</small>		
PROJECT NUMBER 472-85045	DESIGN AEG	DRAWN TMS
REVISIONS:	APPROVED	DATE 04/14
	SCALE Noted	SHEET
		7 OF 18