

EROSION CONTROL MEASURE	INSTALL	MAINTAIN	REMOVE
BACK OF CURB PROTECTION (LF)	1480	0	0
CONSTRUCTION ENTRANCE (EA)	1	0	1
CURB INLET BARRIER (EA)	0	0	0
DITCH CHECK (EA)	0	0	0
DROP INLET PROTECTION (EA)	6	0	0
EROSION CONTROL (LS)	0	0	0
EROSION CONTROL BERM (LF)	0	0	0
SILT FENCE (LF)	0	0	0
EROSION CONTROL MAT (SY)	0	0	0


Quantities are for information only; contractor shall verify quantities per final bid quantity sheet.

Install one construction entrance onto existing paved roadway per detail, sheet 10.

All easements have been graded prior to construction with the mass grading plan, however, all easements shall be fine graded with this project after street construction has been completed. Immediately following sanitary sewer construction in easements as shown, easements were graded to within 6" of proposed grade. All cost associated with the fine grading shall be included in the lump sum bid item "Easement Grading".

NOTE: Contractor shall remove & replace existing erosion control measures as necessary for construction. Contractor shall be required to maintain all on-site erosion control items until final acceptance by the City of Wichita.

EROSION CONTROL PLAN LEGEND
(Installation Details Found in the SWP2 Plan)

H - DROP INLET PROTECTION
O - CURB INLET PROTECTION
J - STRAW BALE BARRIERS
 - CURLEX BLANKET

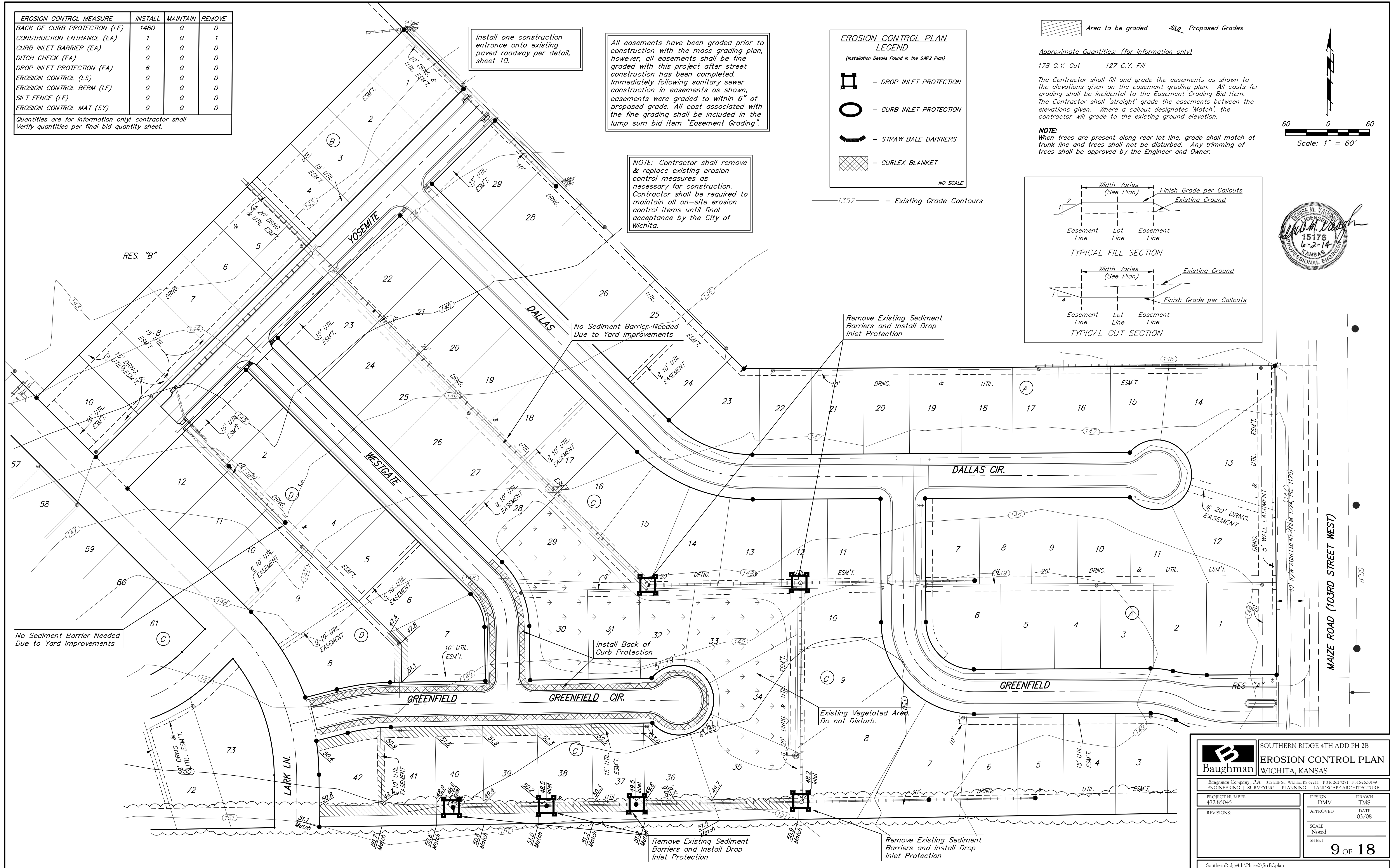
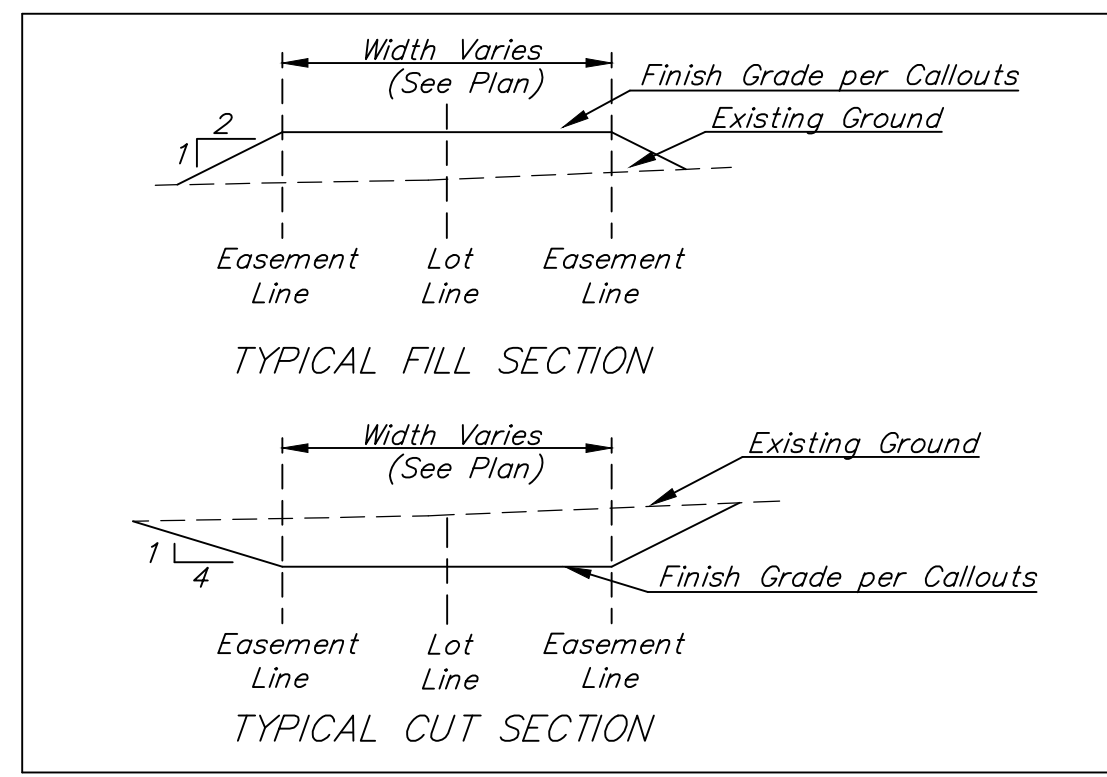
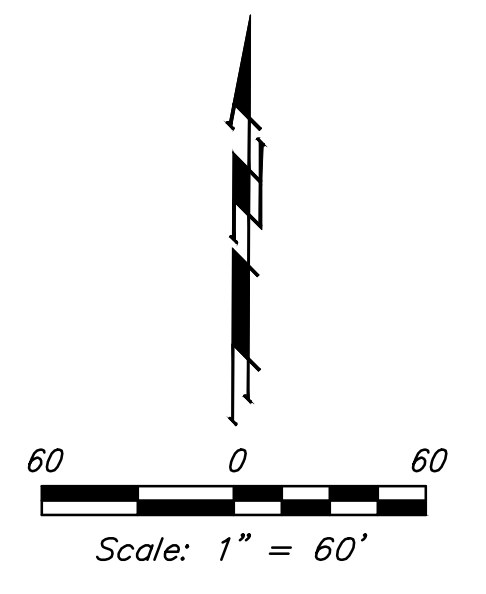
NO SCALE

 Area to be graded  Proposed Grades

Approximate Quantities: (for information only)
 178 C.Y. Cut 127 C.Y. Fill

The Contractor shall fill and grade the easements as shown to the elevations given on the easement grading plan. All costs for grading shall be incidental to the Easement Grading Bid Item. The Contractor shall 'straight' grade the easements between the elevations given. Where a callout designates 'Match', the contractor will grade to the existing ground elevation.

NOTE: When trees are present along rear lot line, grade shall match at trunk line and trees shall not be disturbed. Any trimming of trees shall be approved by the Engineer and Owner.



Baughman SOUTHERN RIDGE 4TH ADD PH 2B
EROSION CONTROL PLAN
 WICHITA, KANSAS

Baughman Company, P.A. 315 Ellis St. Wichita, KS 67211 P 316-362-7171 F 316-362-0149
 ENGINEERING | SURVEYING | PLANNING | LANDSCAPE ARCHITECTURE

PROJECT NUMBER: 472-85045 DESIGN: DMV DRAWN: TMS
 REVISIONS: APPROVED: DATE: 03/08
 SCALE: Noted
 SHEET: **9 OF 18**

SouthernRidge-4th-Phase2-StrEC-plan