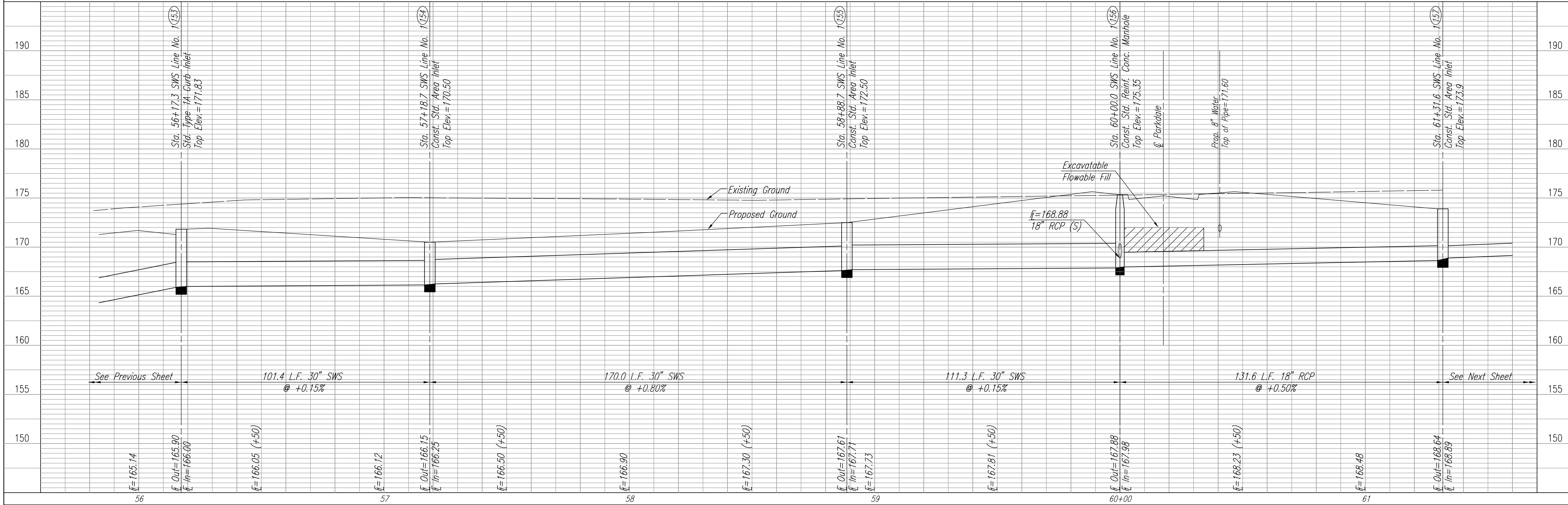
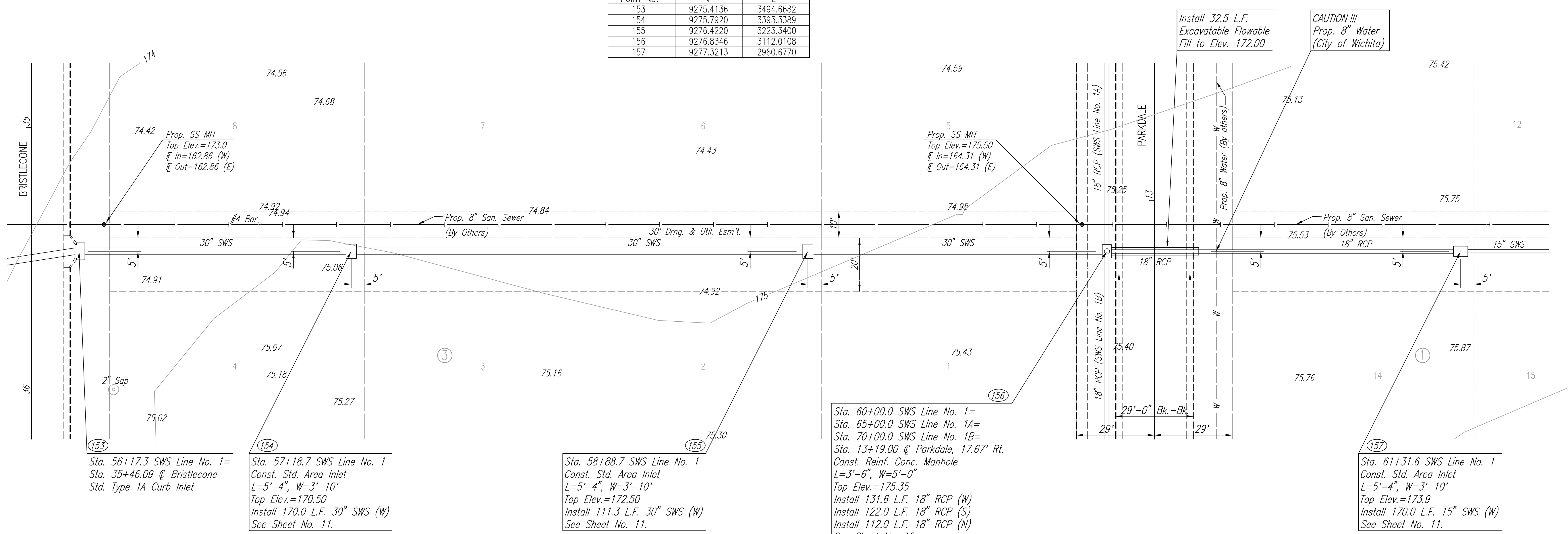


PROFILE	CHECKED	CHECKED
BY		DATE

DSNR: BOB OPER: BUS SCALE: 1"=20.00
 Q:\2003\03123\000\SWS\SWSLN1-2 02-03-2004 12:13:53 am



SWS COORDINATES		
POINT NO.	N	E
153	9275.4136	3494.6682
154	9275.7920	3393.3389
155	9276.4220	3223.3400
156	9276.8346	3112.0108
157	9277.3213	2980.6770



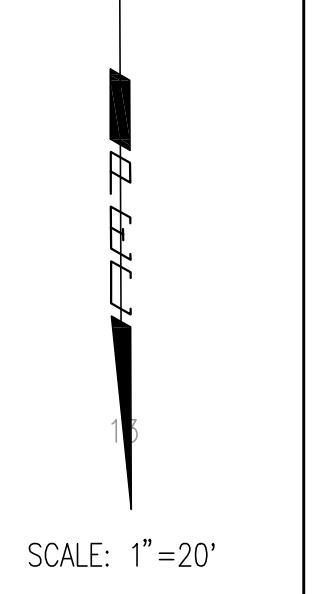
Sta. 56+17.3 SWS Line No. 1
 Sta. 35+46.09 @ Bristlecone
 Std. Type 1A Curb Inlet

Sta. 57+18.7 SWS Line No. 1
 Const. Std. Area Inlet
 L=5'-4", W=3'-10"
 Top Elev.=170.50
 Install 170.0 L.F. 30" SWS (W)
 See Sheet No. 11.

Sta. 58+88.7 SWS Line No. 1
 Const. Std. Area Inlet
 L=5'-4", W=3'-10"
 Top Elev.=172.50
 Install 111.3 L.F. 30" SWS (W)
 See Sheet No. 11.

Sta. 60+00.0 SWS Line No. 1=
 Sta. 65+00.0 SWS Line No. 1A=
 Sta. 70+00.0 SWS Line No. 1B=
 Sta. 13+19.00 @ Parkdale, 17.67' Rt.
 Const. Reinf. Conc. Manhole
 L=3'-6", W=5'-0"
 Top Elev.=175.35
 Install 131.6 L.F. 18" RCP (W)
 Install 122.0 L.F. 18" RCP (S)
 Install 112.0 L.F. 18" RCP (N)
 See Sheet No. 12.

Sta. 61+31.6 SWS Line No. 1
 Const. Std. Area Inlet
 L=5'-4", W=3'-10"
 Top Elev.=173.9
 Install 170.0 L.F. 15" SWS (W)
 See Sheet No. 11.



EVERGREEN 4TH
 STORM WATER SEWER NO. 589

SWS LINE NO. 1

JAMES L. ARMOUR, P.E. - ACTING CITY ENGINEER
 CITY OF WICHITA PROJECT NO. 468-83640

Professional Engineering Consultants, P.A.
 303 S. TOPEKA - WICHITA, KANSAS 67202
 316-262-2691 • FAX 316-262-3003

Designed By: BOB
 Drawn By: BUS
 Job No.: 35-03123
 Date: March 2003

Sheet 5 of 17