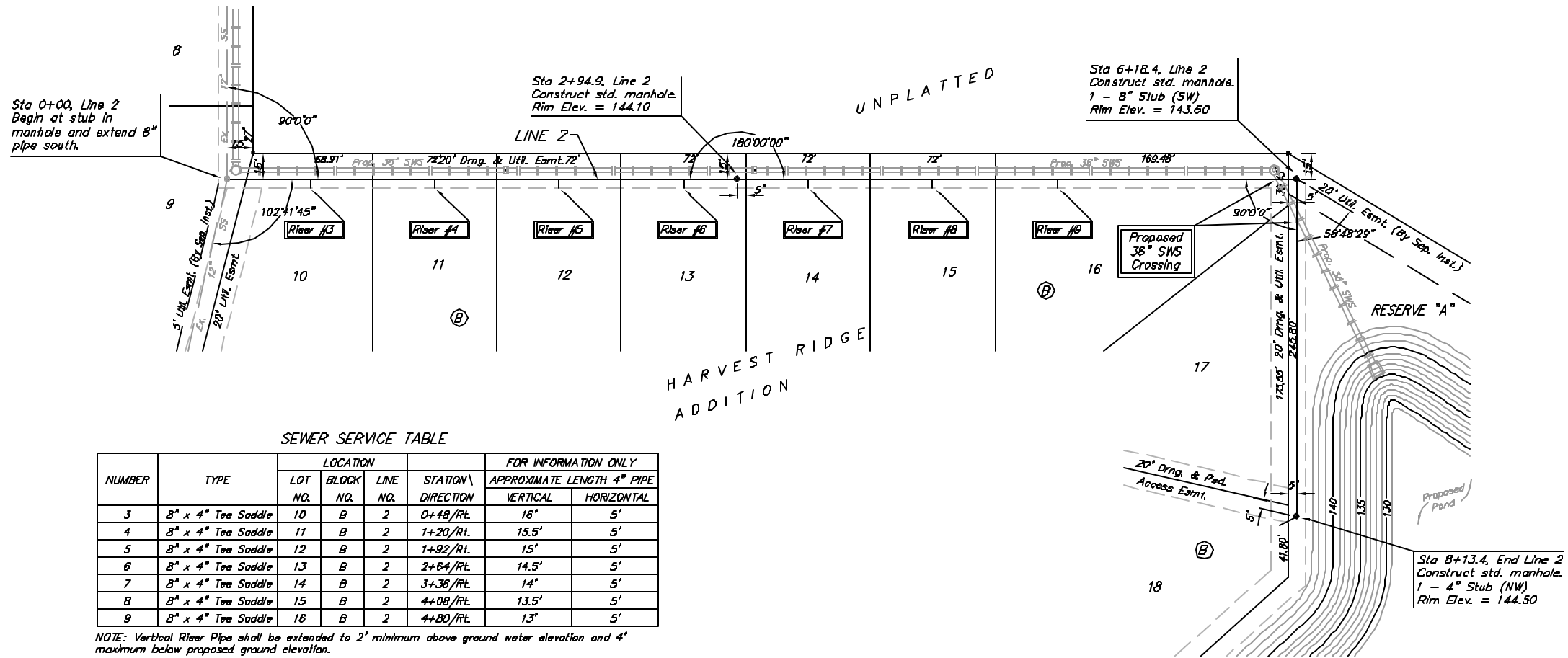


**Benchmarks:**

BM #1: Small RR spike in 2nd PP north of K-42 Highway, west side of Malze  
Elev. = 143.61 (City Datum)

BM #2: Small RR spike in PP east of East 1/4 Corner (G)  
Elev. = 147.00 (City Datum)

BM #3: "□" Top Headwall southeast corner K-42 Highway and Malze (County BM with City Datum)  
Elev. = 144.04 (City Datum)

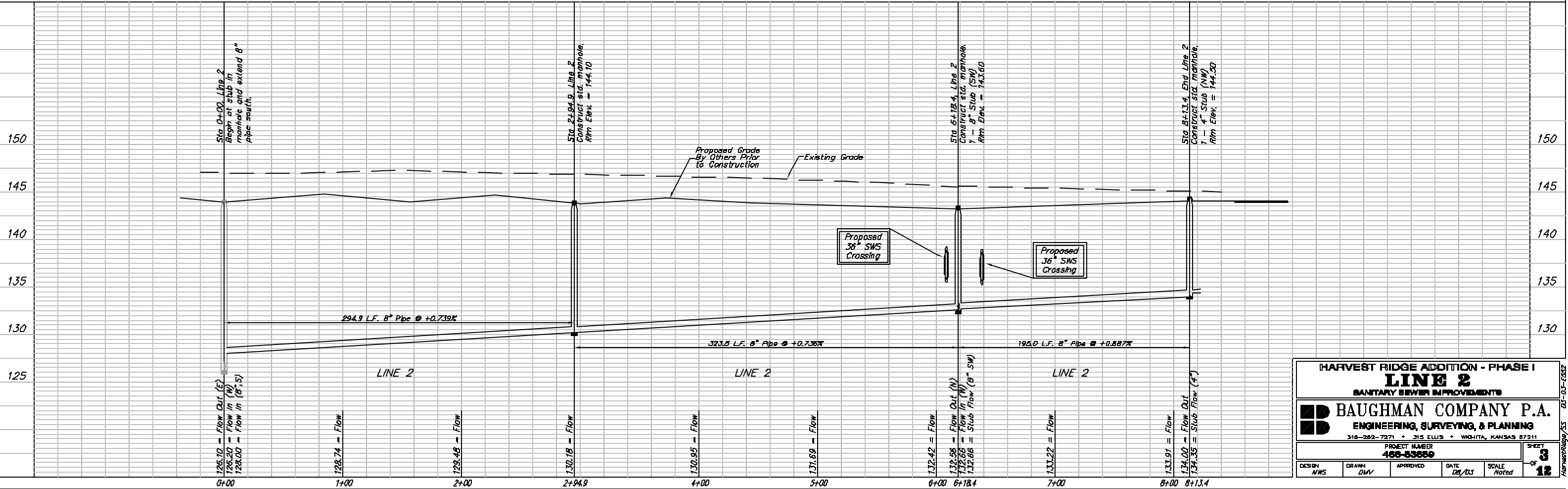


Scale: 1" = 40' Horizontal  
1" = 5' Vertical  
= Iron

SEWER SERVICE TABLE

NUMBER	TYPE	LOCATION			FOR INFORMATION ONLY		
		LOT NO.	BLOCK NO.	LINE NO.	STATION \ DIRECTION	APPROXIMATE LENGTH 4" PIPE	VERTICAL
3	8" x 4" Tee Saddle	10	B	2	0+48/RL	16"	5'
4	8" x 4" Tee Saddle	11	B	2	1+20/RL	15.5'	5'
5	8" x 4" Tee Saddle	12	B	2	1+92/RL	15'	5'
6	8" x 4" Tee Saddle	13	B	2	2+84/RL	14.5'	5'
7	8" x 4" Tee Saddle	14	B	2	3+38/RL	14'	5'
8	8" x 4" Tee Saddle	15	B	2	4+08/RL	13.5'	5'
9	8" x 4" Tee Saddle	16	B	2	4+80/RL	13'	5'

NOTE: Vertical Riser Pipe shall be extended to 2' minimum above ground water elevation and 4' maximum below proposed ground elevation.



HARVEST RIDGE ADDITION - PHASE I  
**LINE 2**  
SANITARY SEWER IMPROVEMENTS

**BAUGHMAN COMPANY P.A.**  
ENGINEERING, SURVEYING, & PLANNING  
316-282-7271 • 315 ELLIS • WICHITA, KANSAS 67211

PROJECT NUMBER: 468-53669

DESIGN: NWS    DRAWN: DMV    APPROVED:    DATE: 08/03    SCALE: Noted

SHEET 3 OF 12