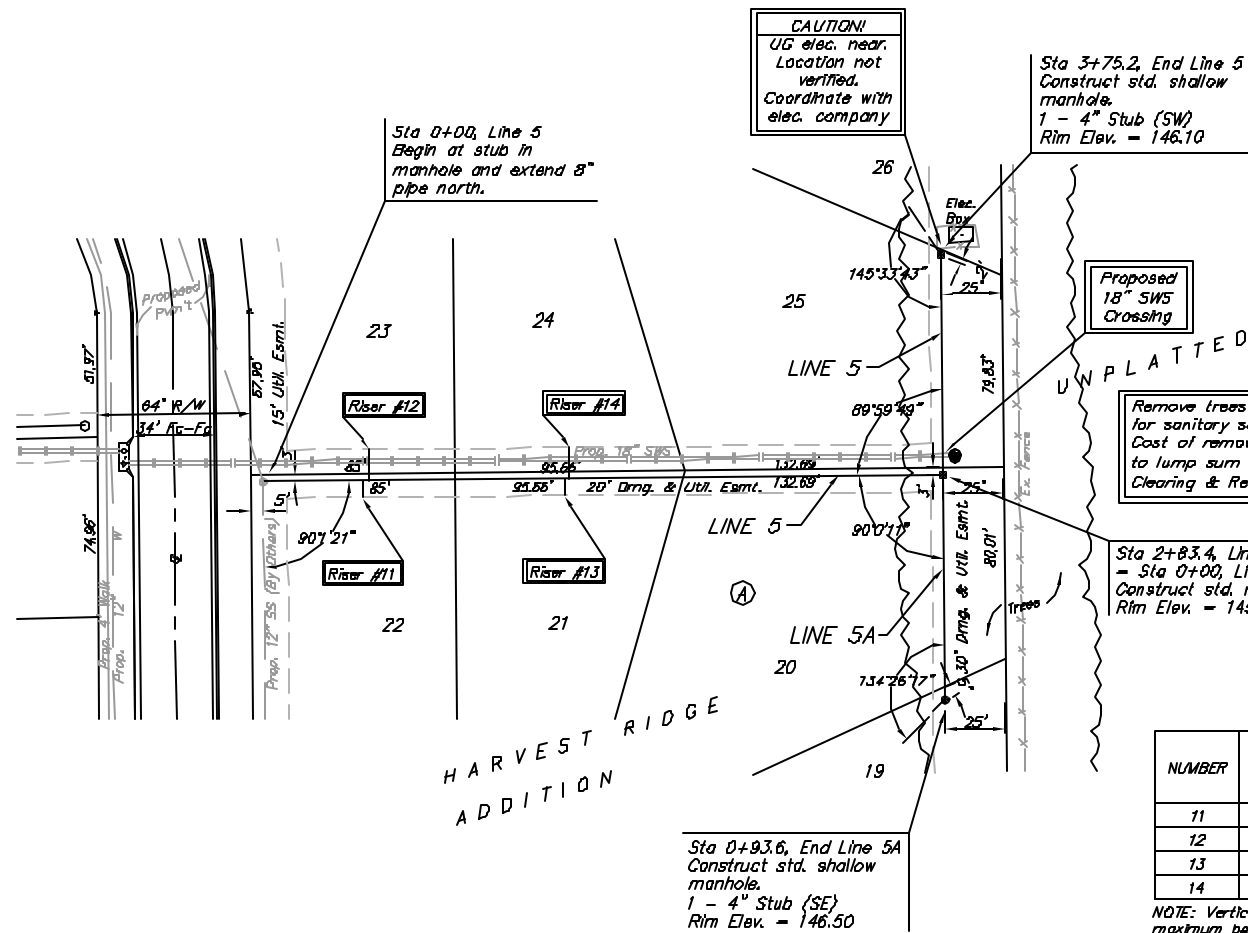


Benchmarks:

- BM #1: Small RR spike in 2nd PP north of K-42 Highway, west side of Maize
Elev. = 143.61 (City Datum)
- BM #2: Small RR spike in PP east of East 1/4 Corner (G)
Elev. = 147.00 (City Datum)
- BM #3: "□" Top Headwall southeast corner K-42 Highway and Maize (County BM with City Datum)
Elev. = 144.04 (City Datum)



CAUTION!
UG elec. near. Location not verified. Coordinate with elec. company

Sta 3+75.2, End Line 5
Construct std. shallow manhole.
1 - 4" Stub (SW)
Rim Elev. = 146.10

Proposed 18" SWS Crossing

UNPLATTED

Remove trees only as necessary for sanitary sewer construction. Cost of removal to be incidental to lump sum bid item "Site Clearing & Restoration".

Sta 2+83.4, Line 5 - Sta 0+00, Line 5A
Construct std. manhole.
Rim Elev. = 145.00

Sta 0+93.6, End Line 5A
Construct std. shallow manhole.
1 - 4" Stub (SE)
Rim Elev. = 146.50

Scale: 1" = 40' Horizontal
1" = 5' Vertical
= Iron

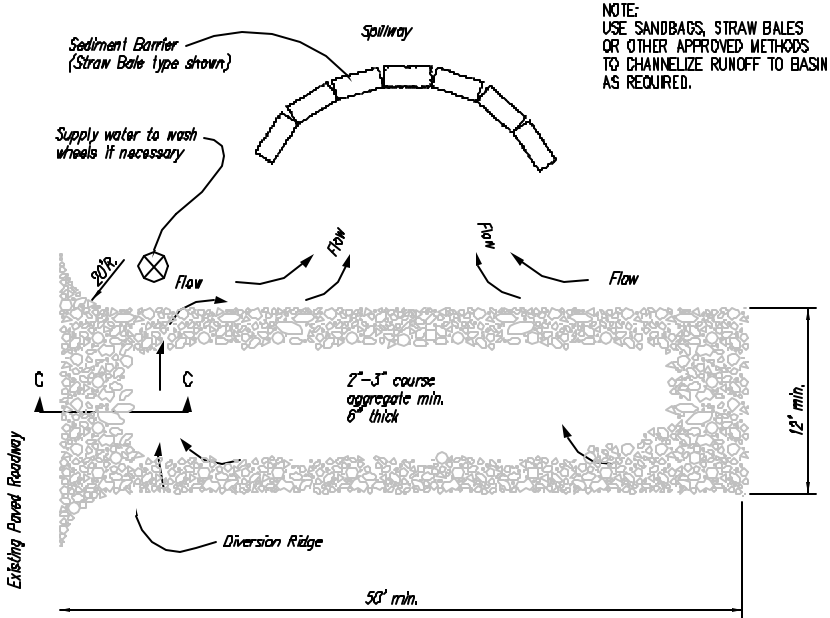
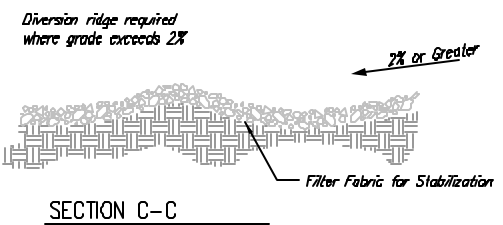
Notes:

- The entrance shall be maintained in a condition that will prevent tracking or flowing of sediment onto public rights-of-way. This may require top dressing, repair and/or cleanout of any measures used to trap sediment.
- When necessary, wheels shall be cleaned prior to entrance onto public right-of-way.
- When washing is required, it shall be done on an area stabilized with crushed stone that drains into an approved sediment trap or sediment basin, as shown above.
- Drive entrances onto residential lots will not be required to have the sediment barrier shown, but wheel washing may be required if stabilized entrance is not sufficient to keep mud from being tracked onto adjacent street. Entrance shall extend from back of curb to dwelling.

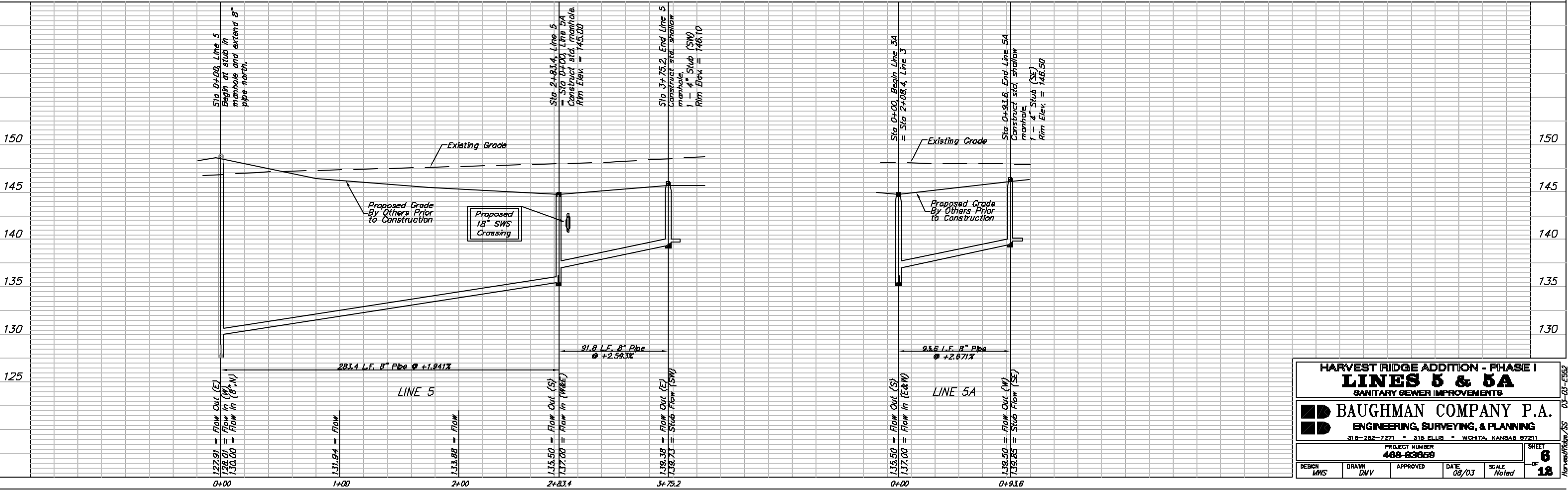
SEWER SERVICE TABLE

NUMBER	TYPE	LOCATION			FOR INFORMATION ONLY	
		LOT NO.	BLOCK NO.	LINE NO.	STATION\ DIRECTION	APPROXIMATE LENGTH 4" PIPE
11	8" x 4" Tee Saddle	22	A	5	0+41/RL	16' 7"
12	8" x 4" Tee Saddle	23	A	5	0+46/Lt.	16' 13"
13	8" x 4" Tee Saddle	21	A	5	1+25/RL	14.5' 7"
14	8" x 4" Tee Saddle	24	A	5	1+30/Lt.	14.5' 13"

NOTE: Vertical Riser Pipe shall be extended to 2' minimum above ground water elevation and 4' maximum below proposed ground elevation.



NOTE: USE SANDBAGS, STRAW BALES OR OTHER APPROVED METHODS TO CHANNELIZE RUNOFF TO BASIN AS REQUIRED.



HARVEST RIDGE ADDITION - PHASE I
LINES 5 & 5A
SANITARY SEWER IMPROVEMENTS

BAUGHMAN COMPANY P.A.
ENGINEERING, SURVEYING, & PLANNING

PROJECT NUMBER: 488-83859
DATE: 08/03
SCALE: Noted

SHEET 6 OF 18