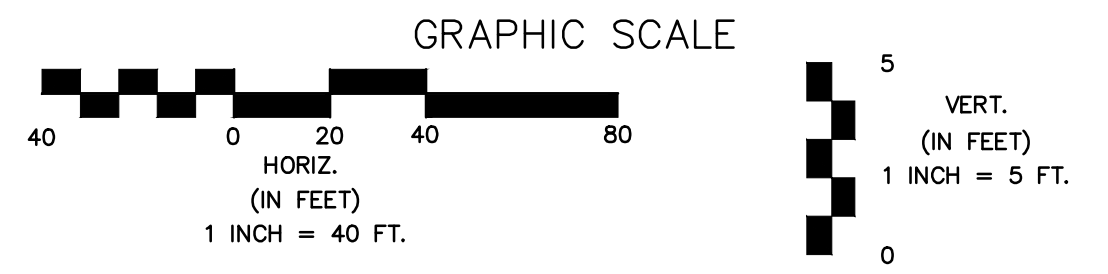


NOTES:
 1. Contractor to Field Verify location and Depth of All Utilities Prior to Construction and Report Findings to Project Engineer.

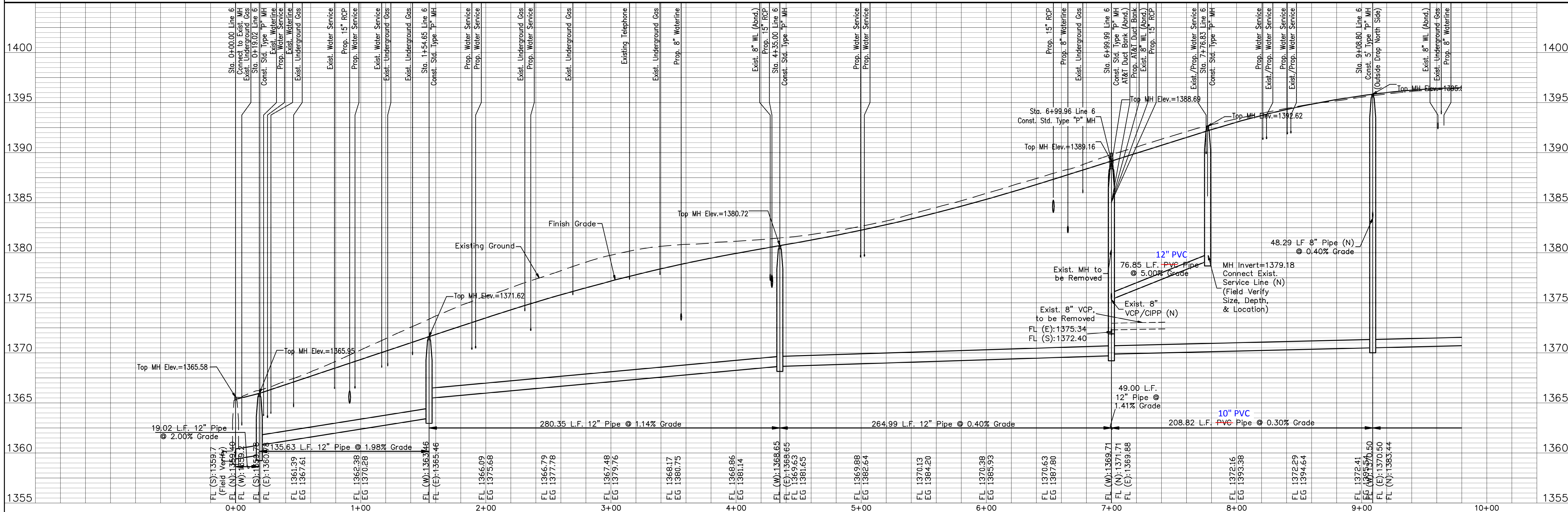
Remove Trees Only as Needed for Construction. Cost Shall be **Subsidiary** to Site Clearing.

LEGEND

- Sanitary Sewer to be Abandoned in Place or Removed as Noted in Plan
- Existing Building to be Removed by Others



LINE #6



No.	Date	By	Approved	Revision
1	6/20/2012	MT	JU	Move Line 6 6.5' South from Sta. 7+49.99 to 7+43.49
2	4/23/2013	MT	JU	Line 6 relocated and slope revised from Layon to Belmont

POE & ASSOCIATES, INC.
 CONSULTING ENGINEERS
 5940 E. Central, Suite 200 • Wichita, KS 67208-0242
 Phone 316/685-4114 • FAX 316/685-4444

FINAL

Designed By: J. DICKMAN
 Drawn By: M. TUCKER
 P.O. Job No.: 1871A
 Date: March 2012

13TH STREET NORTH FROM HYDRAULIC TO OLIVER
 SANITARY SEWER EXTENSIONS
 LINE NO. 6
 CITY OF WICHITA, KANSAS
 GARY JANZEN, P.E. - CITY ENGINEER
 C.O.W. Proj. No. 468-84816 OCA No. 7624100

366 of 374