

NOTES:
 1. Contractor to Field Verify location and Depth of All Utilities Prior to Construction and Report Findings to Project Engineer.

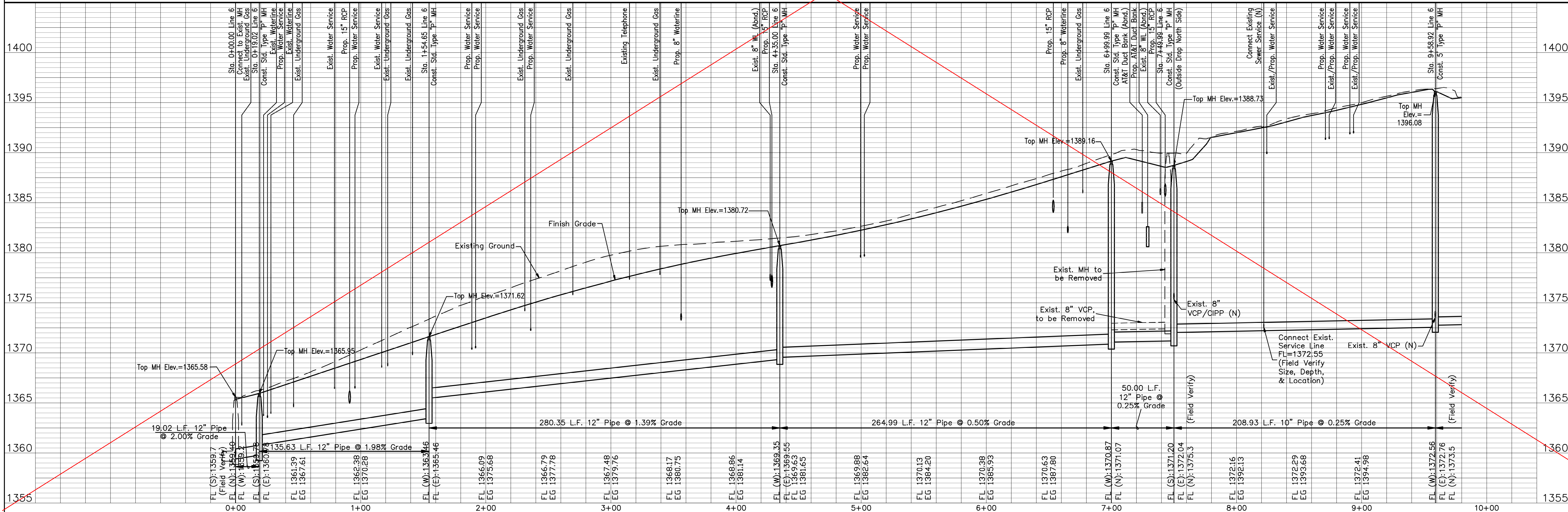
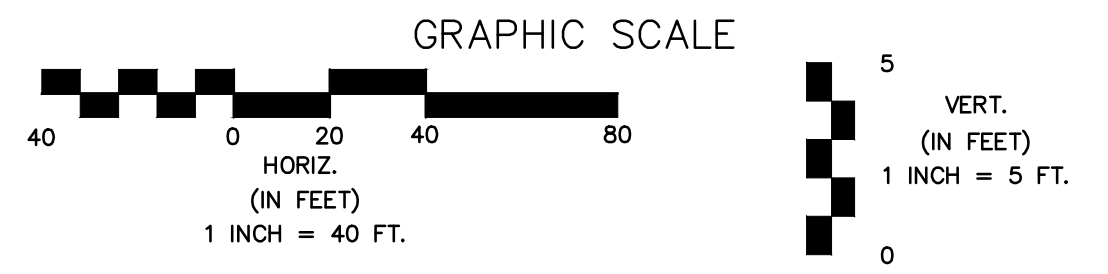
Remove Trees Only as Needed for Construction. Cost Shall be Subsidiary to Site Clearing.

See Revised Sheet

LINE #6

LEGEND

- Sanitary Sewer to be Abandoned in Place or Removed as Noted in Plan
- Existing Building to be Removed by Others



13TH STREET NORTH FROM HYDRAULIC TO OLIVER
 SANITARY SEWER EXTENSIONS
 LINE NO. 6
CITY OF WICHITA, KANSAS
 JAMES L. ARMOUR, P.E. - CITY ENGINEER
 C.O.W. Proj. No. 466-84816 OCA No. 7624100

POE & ASSOCIATES, INC.
 CONSULTING ENGINEERS
 5940 E Central, Suite 200 Wichita, KS 67208-0242
 Phone 316/695-4114 FAX 316/695-4444

Designed By: J. DICKMAN
 Drawn By: M. TUCKER
 P.O. Job No.: 1871A
 Date: March 2012

366 of 374