

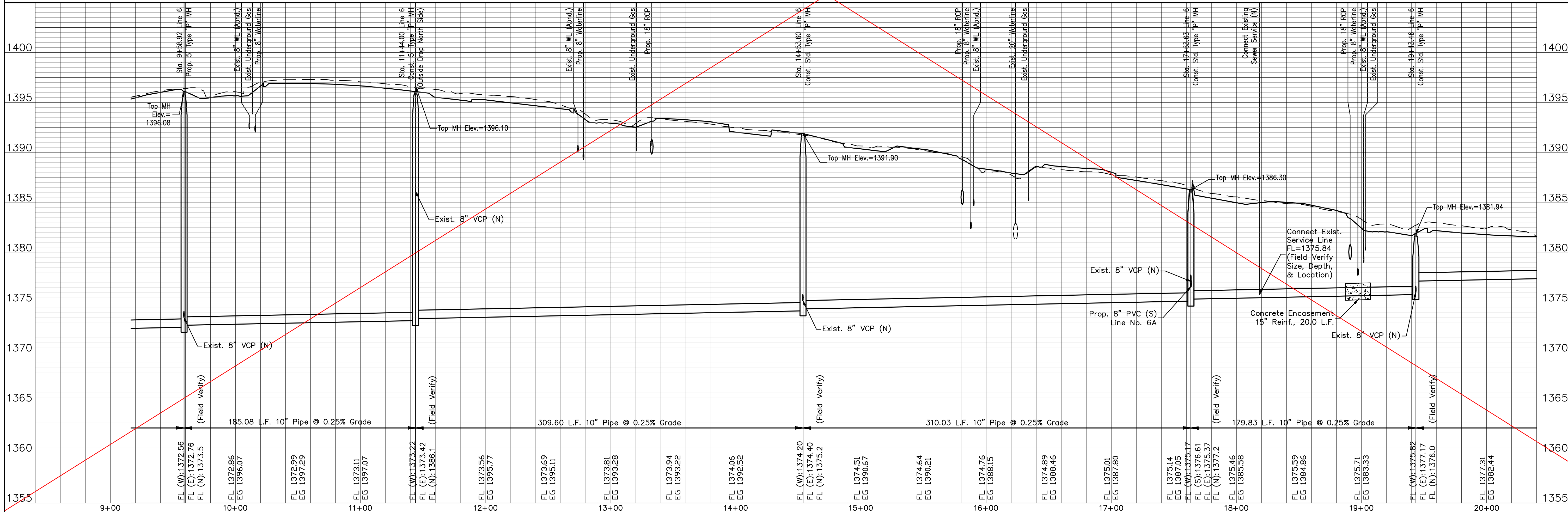
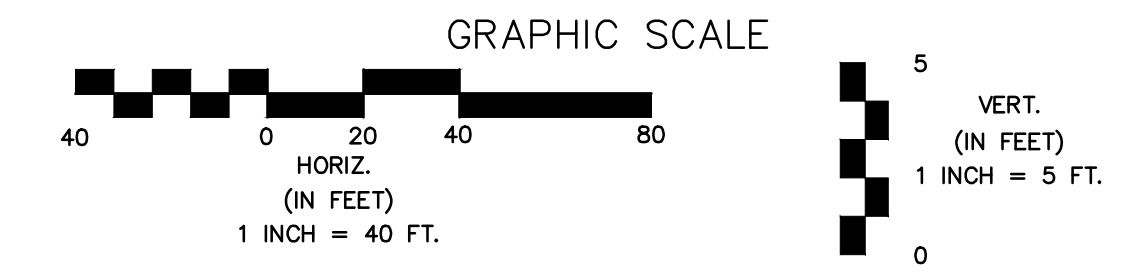
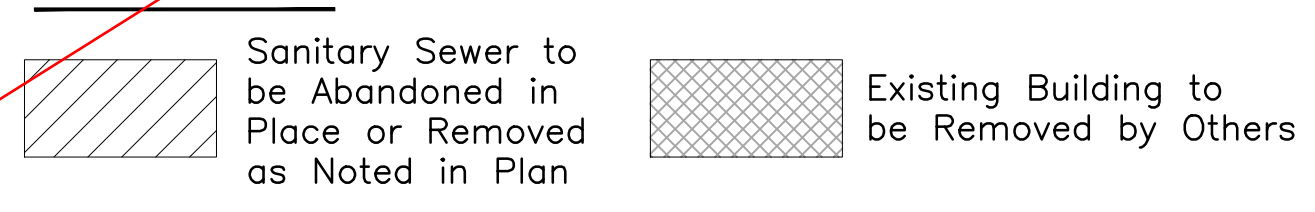
**NOTES:**  
 1. Contractor to Field Verify location and Depth of All Utilities Prior to Construction and Report Findings to Project Engineer.

Remove Trees Only as Needed for Construction. Cost Shall be **Subsidiary** to Site Clearing.

**SEE REVISED SHEET**

**LINE #6 - CONT.**

**LEGEND**



13TH STREET NORTH FROM HYDRAULIC TO OLIVER  
 SANITARY SEWER EXTENSIONS  
 LINE NO. 6 CONTINUED  
**CITY OF WICHITA, KANSAS**  
 JAMES L. ARMOUR, P.E. - CITY ENGINEER  
 C.O.W. Proj. No. 466-84816 OCA No. 7624100

**POE & ASSOCIATES, INC.**  
 CONSULTING ENGINEERS  
 5940 E. Central, Suite 200 ■ Wichita, KS 67208-0242  
 Phone 316/685-4114 ■ FAX 316/685-4444

Designed By: J. DICKMAN  
 Drawn By: M. TUCKER  
 P.O. Job No.: 1871A  
 Date: March 2012

367 of 374