

NOTES:
 1. Contractor to Field Verify location and Depth of All Utilities Prior to Construction and Report Findings to Project Engineer.

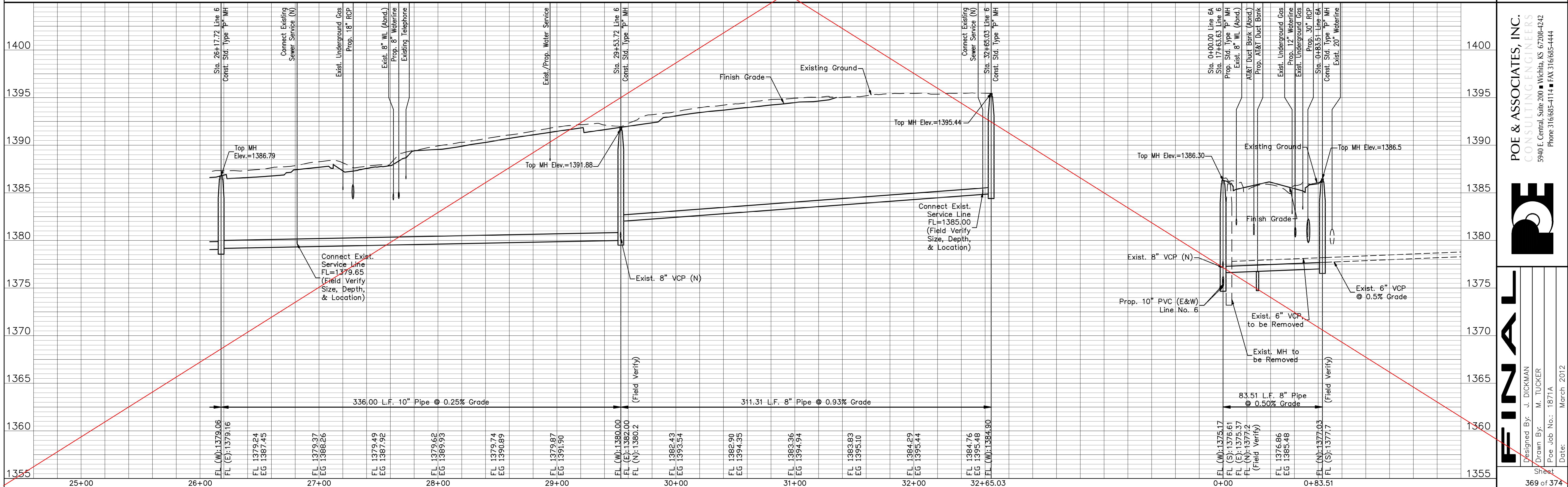
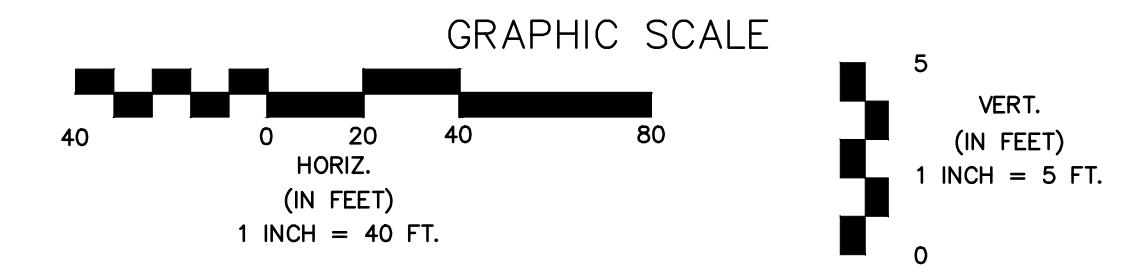
Remove Trees Only as Needed for Construction. Cost Shall be Subsidiary to Site Clearing.

SEE REVISED SHEET

LINE #6 - CONT. and 6A

LEGEND

- Sanitary Sewer to be Abandoned in Place or Removed as Noted in Plan
- Existing Building to be Removed by Others



13TH STREET NORTH FROM HYDRAULIC TO OLIVER
 SANITARY SEWER EXTENSIONS
 LINE NO. 6 CONTINUED & 6A
 CITY OF WICHITA, KANSAS
 JAMES L. ARMOUR, P.E. - CITY ENGINEER
 C.O.W. Proj. No. 466-84816 OCA No. 7624100

No.	Date	By	Approved	Revision

POE & ASSOCIATES, INC.
 CONSULTING ENGINEERS
 5940 E. Central, Suite 200 ■ Wichita, KS 67208-0242
 Phone 316/685-4114 ■ FAX 316/685-4444

FINAL

Designed By: J. DICKMAN
 Drawn By: M. TUCKER
 Pce Job No.: 1871A
 Date: March 2012

369 of 374