

Benchmarks:
 BM #1: Small RR spike in 2nd PP north of K-42 Highway, west side of Maize
 Elev. = 143.81 (City Datum)
 BM #2: Small RR spike in PP east of East 1/4 Corner (G)
 Elev. = 147.00 (City Datum)
 BM #3: "□" Top Headwall southeast corner K-42 Highway and Maize (County BM with City Datum)
 Elev. = 144.04 (City Datum)

Sta. 0+00, Line 1, Begin construction of ditch. Match flowline at existing box.

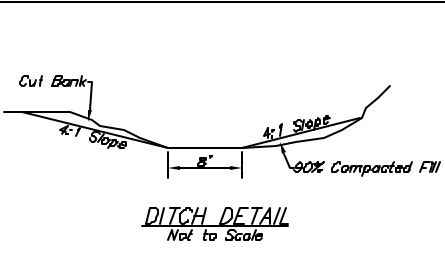
Ditch flowline may be re-aligned as needed in the field to allow for trees.

CAUTION!
 Ex. 6" steel gas line crossing. Contact Kansas Gas Service prior to construction to confirm line has been lowered.

Scale: 1" = 20' Horizontal
 1" = 5' Vertical
 * = Iron

Install hay bale barrier per detail, sheet _____

Sta 4+83.10, Line 1 Construct KDOT Type 1 Ditch Inlet.
 Top Elev. = 140.00 Match Point

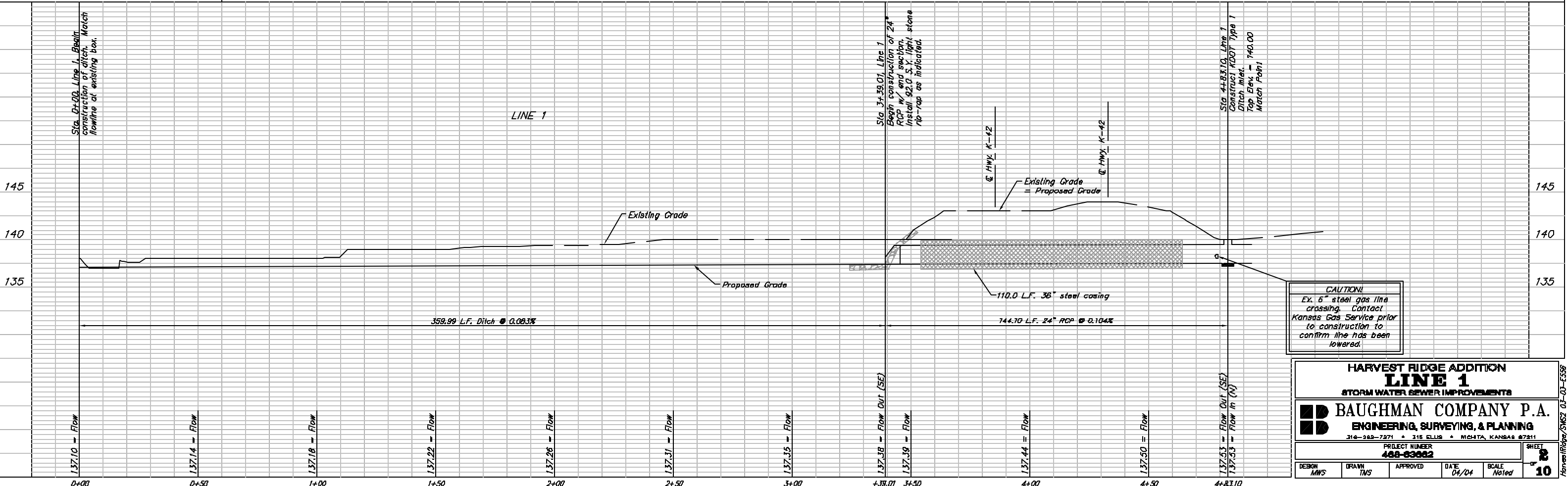


Regrade ditch from end of proposed RCP to existing wooden box culvert to ensure positive drainage. Cost to be incidental to "Site Clearing & Restoration".

Trim trees only as needed. Trees to be removed with Engineer's approval only. Cost incidental to "Site Clearing & Restoration".

Sta 3+39.01, Line 1 Begin construction of 24" RCP w/ end section. Install 92.0 S.Y. light stone rip-rap as indicated.

Sta 3+54 to Sta 4+84 Install 110.0 L.F. 36" steel casing by boring and jacking.



CAUTION!
 Ex. 6" steel gas line crossing. Contact Kansas Gas Service prior to construction to confirm line has been lowered.

HARVEST RIDGE ADDITION
LINE 1
 STORM WATER SEWER IMPROVEMENTS

BAUGHMAN COMPANY P.A.
 ENGINEERING, SURVEYING, & PLANNING
 316-262-7271 • 315 ELLIS • MICHATA, KANSAS 67211

PROJECT NUMBER: **488-83042** SHEET: **2**
 DESIGN: MWS DRAWN: TMS APPROVED: DATE: 04/04 SCALE: Noted

HarvestRidge/SWS2 03-03-ES58