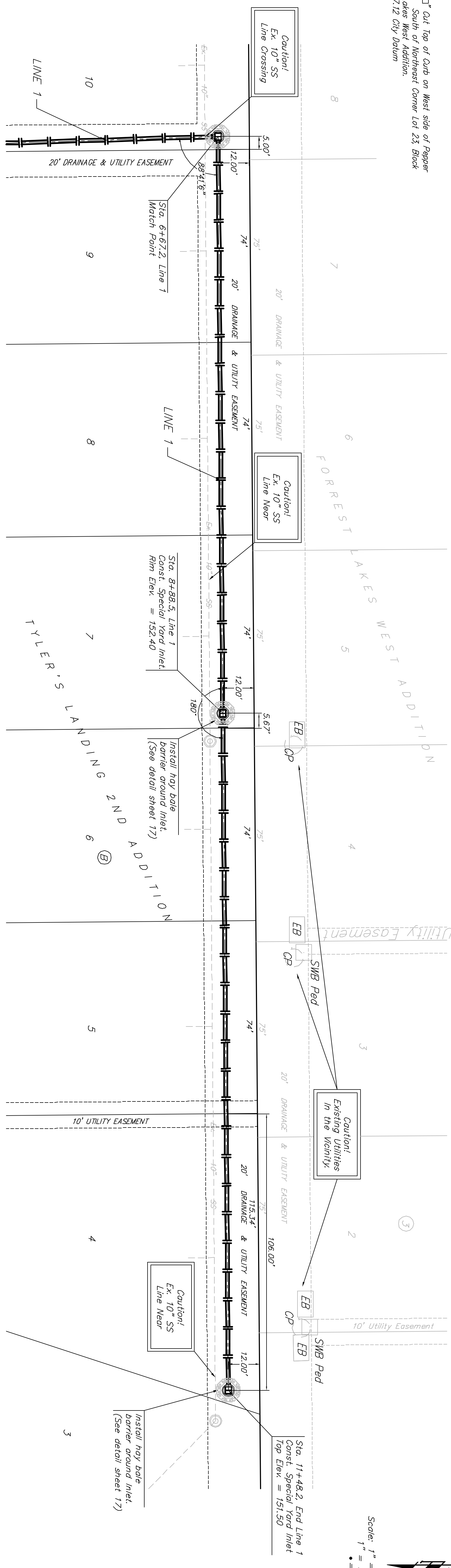


Benchmark:
 BM #1: 80d Spike in West face of North High Line Pole in East R/W Tyler Road 1/2 mile of South of 37th Street North.
 Elev. = 178.05 City Datum

BM #2: "C" Cut Top of Curb on West side of Pepper Ridge 15± South of Northeast Corner Lot 23, Block 5, Forest Lakes West Addition.
 Elev. = 157.12 City Datum



Scale: 1" = 20' Horizontal
 1" = 5' Vertical
 • = Iron

Station	Flow	Notes
6+67.2	144.30 = Flow Out 144.40 = Flow In	Sta. 6+67.2, Line 1 Match Point
7+00	144.56 = Flow	
7+50	144.81 = Flow	221.3 L.F. 15" SMS @ +0.487%
8+00	145.06 = Flow	
8+50	145.31 = Flow	
8+88.5	145.50 = Flow Out 145.60 = Flow In 145.68 = Flow	Sta. 8+88.5, Line 1 Const. Special Yard Inlet. Rim Elev. = 152.40
9+50	146.00 = Flow	
10+00	146.33 = Flow	258.7 L.F. 15" SMS @ +0.655%
10+50	146.66 = Flow	
11+00	146.99 = Flow	
11+48.2	147.30 = Flow Out	Sta. 11+48.2, End Line 1 Const. Special Yard Inlet Top Elev. = 151.50

TYLER'S LANDING 2ND ADDITION

LINE 1

STORM WATER SEWER IMPROVEMENTS
BAUGHMAN COMPANY P.A.
 ENGINEERING, SURVEYING, & PLANNING
 316-262-2271 • 316 ELLIS • WICHITA, KANSAS 67211

DESIGN	DRWN	APPROVED	DATE	SCALE
MBW	AJD		08/04	NOTED
PROJECT NUMBER		SHEET		
408-8728		4		
PROJECT NAME		OF		
TYLER'S LANDING 2ND ADDITION		23		