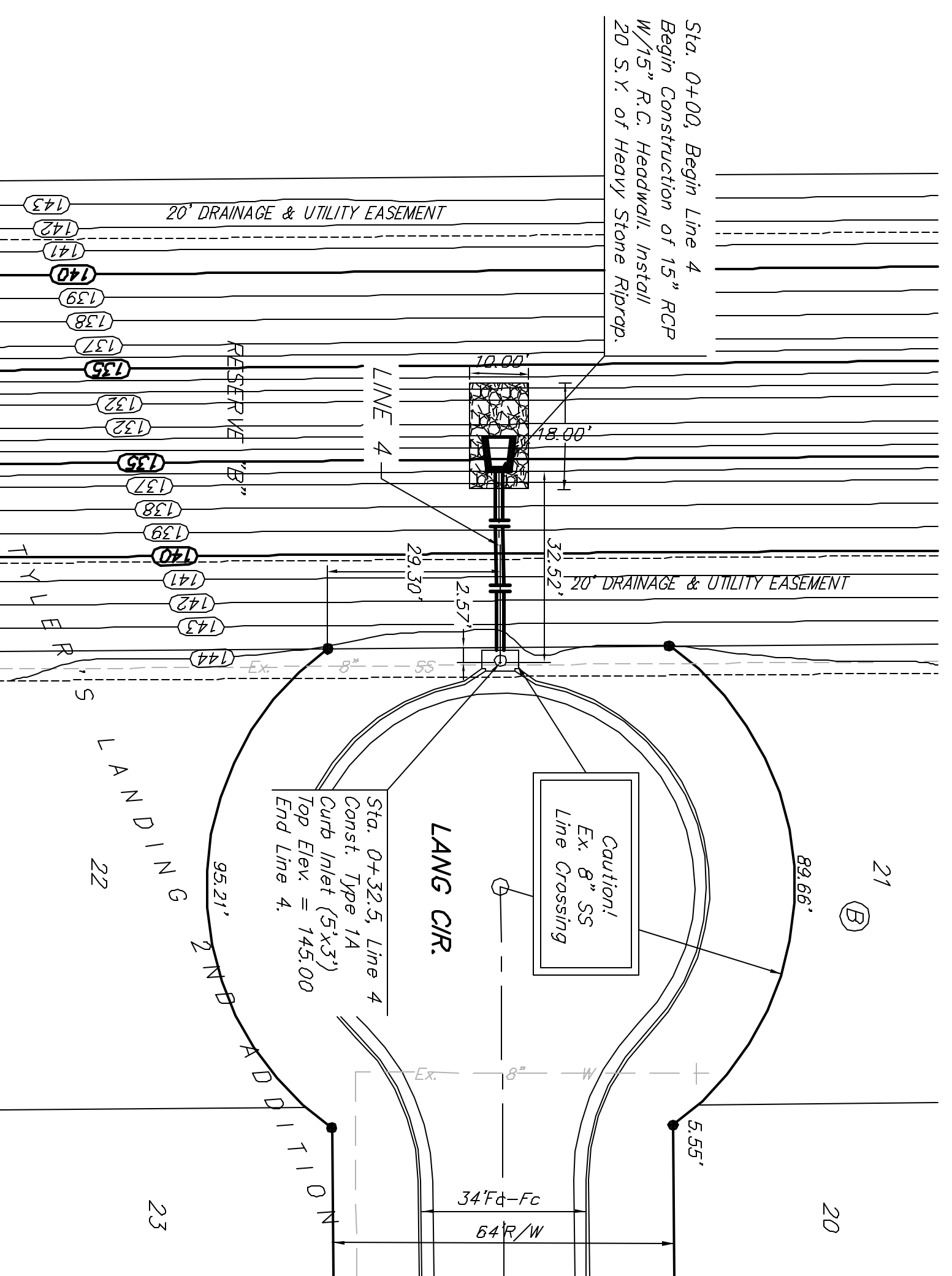
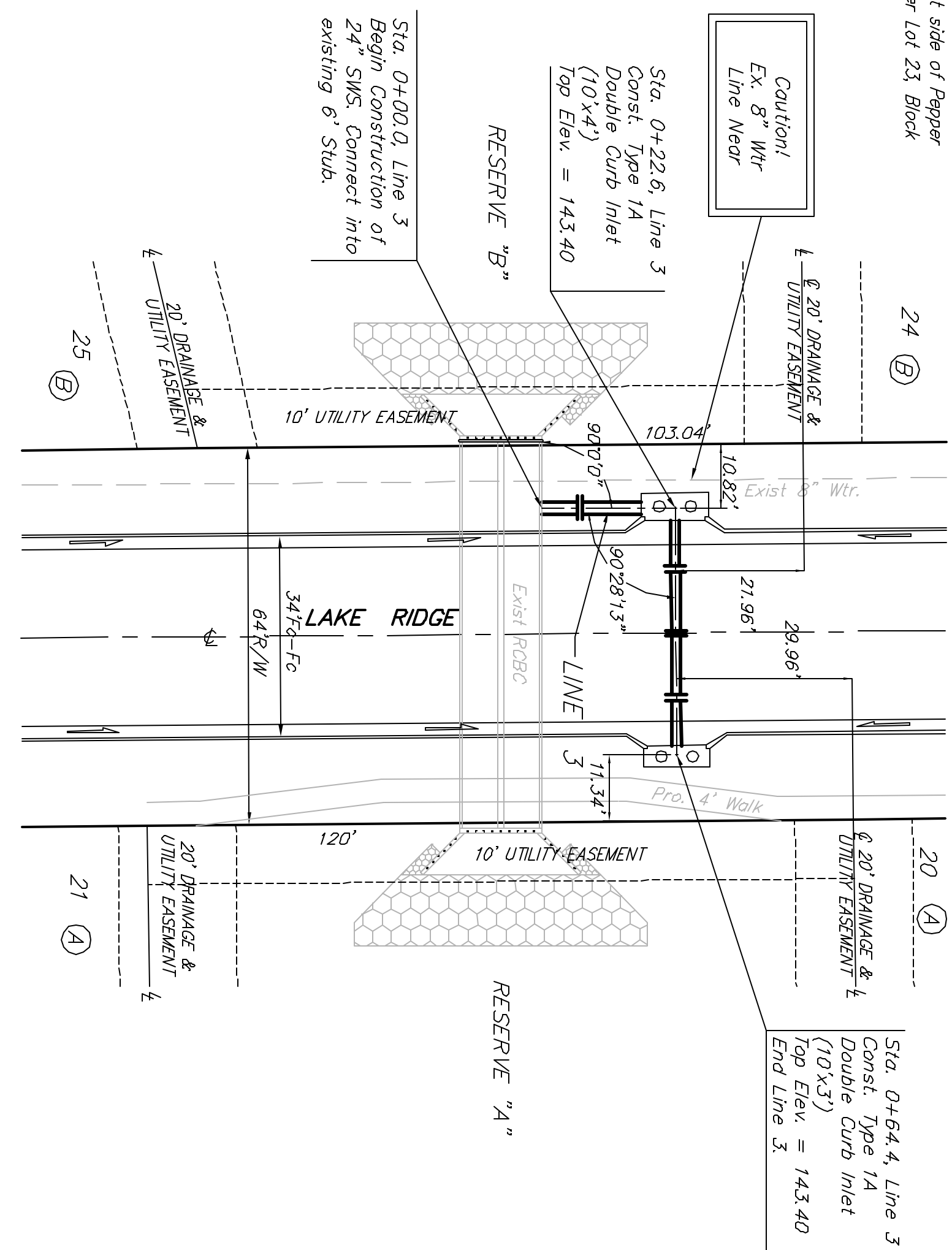


Benchmark:
 BM #1: 800 Spike in West face of North High Line Pole in East R/W Tyler Road 1/2 mile of South of 5th Street North, Elev. = 176.05 City Datum

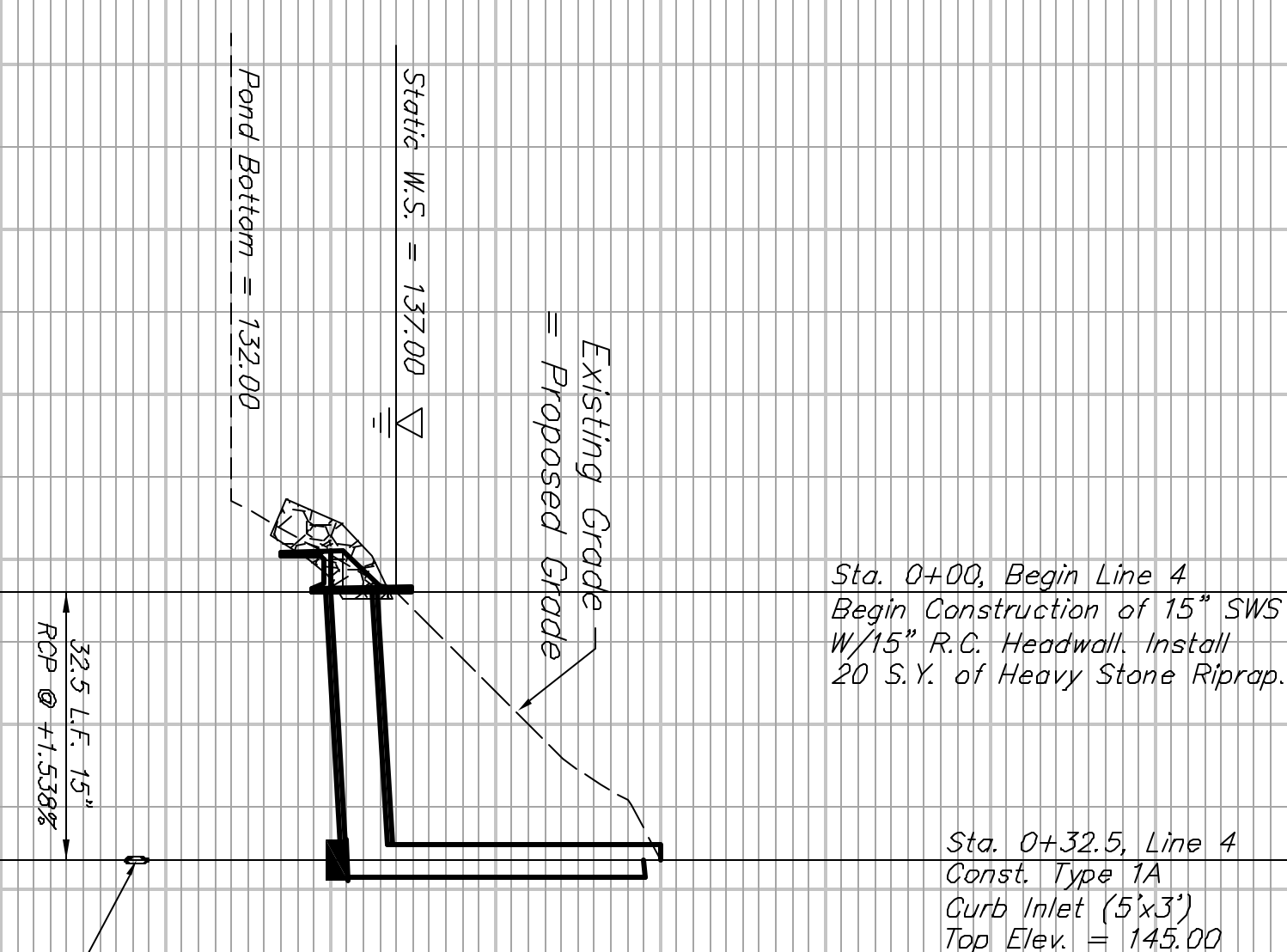
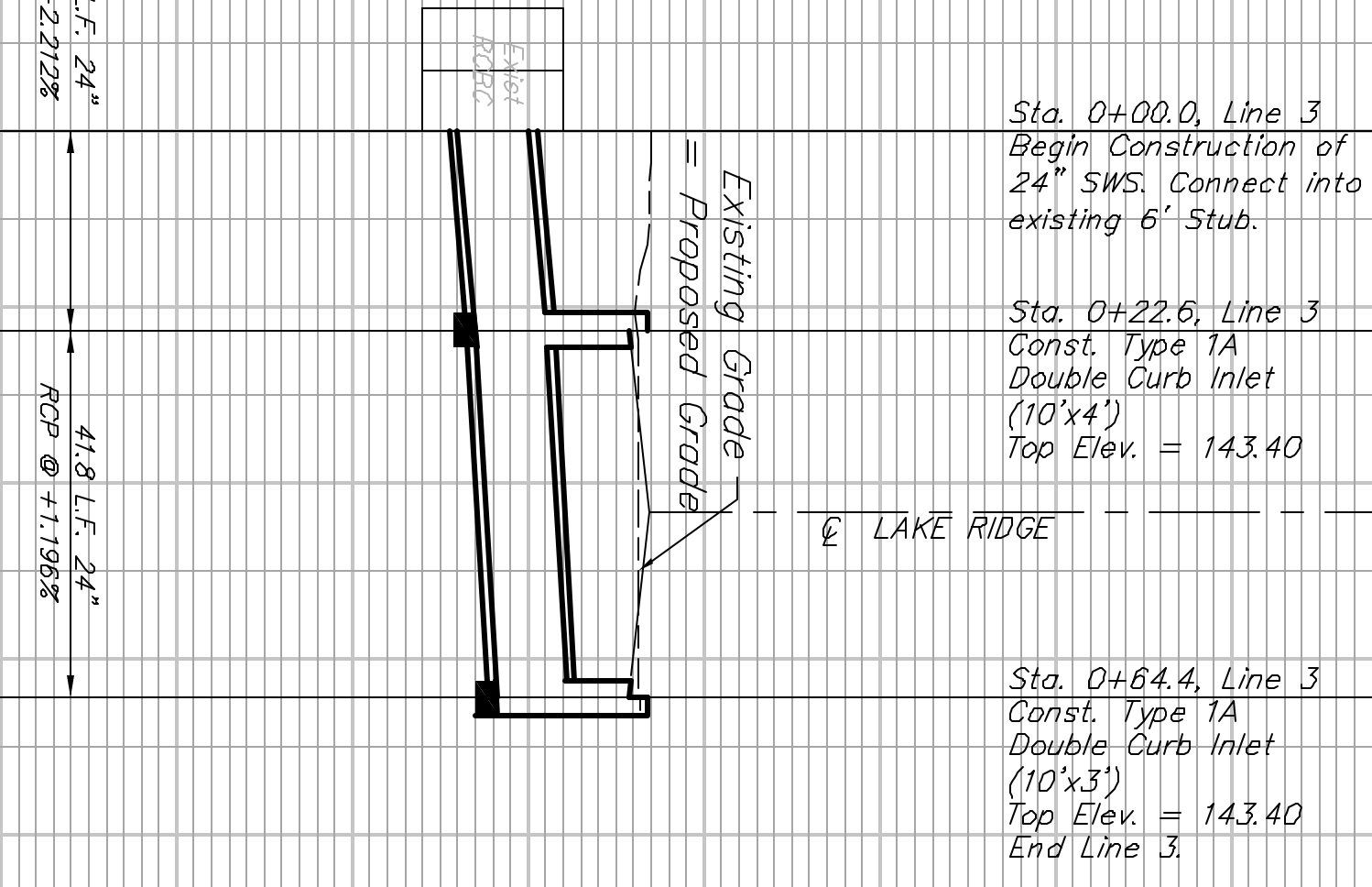
BM #2: "C" Cur Top of Curb on West side of Pepper Ridge 15.1' South of Northeast Corner Lot 23 Block 5, Forest Lakes West Addition, Elev. = 157.12 City Datum



Scale: 1" = 20' Horizontal
 1" = 5' Vertical
 • = Iron



125	22.6' L.F. 24" RCP @ +2.2128'	138.00 = Flow Out	0+00
130	41.8' L.F. 24" RCP @ +1.1968'	138.50 = Flow Out	0+22.6
135		138.60 = Flow In	
140	22.6' L.F. 24" RCP @ +2.2128'	139.10 = Flow Out	0+64.4
145		139.10 = Flow Out	
150			



**TYLERS LANDING 2ND ADDITION
 LINE 3 & LINE 4
 STORM WATER SEWER IMPROVEMENTS**

BAUGHMAN COMPANY P.A.
 ENGINEERING, SURVEYING, & PLANNING

315-282-7271 • 315 BELLS • WICHITA, KANSAS 67211

DESIGN	MBW
DRAWN	AJD
PROJECT NUMBER	458-81723
DATE	01/04
SCALE	NOTED
SHEET	23