

STREET IMPROVEMENTS CLEAR CREEK ADDITION PHASE 3

Lots 29-34, Block 3; Lots 25-33, Block 9 MORRIS from the SW Property line of L24, B9 to Morris Cir; SPRING HOLLOW DRIVE from the N Property line of L1, B9 Morris Cir.

**Proj #472-85132
OCA# 766306**

GENERAL NOTES

1. Contractor will be required to provide a minimum advance notice of seventy-two (72) hours to utility companies prior to starting any excavation as follows:

Kansas One-Call 687-2470

The Contractor must notify the following in case of an emergency:

Cox Communications	262-0661
Butler Rural Electric CO-OP	1-316-321-9600
Kansas Gas Service	1-888-482-4950
Westar	383-8600
Black Hills Energy	1-888-890-5554
SBC	1-800-286-8313
City of Wichita Water Department	262-6000
City of Wichita Sewer Maintenance	262-6000

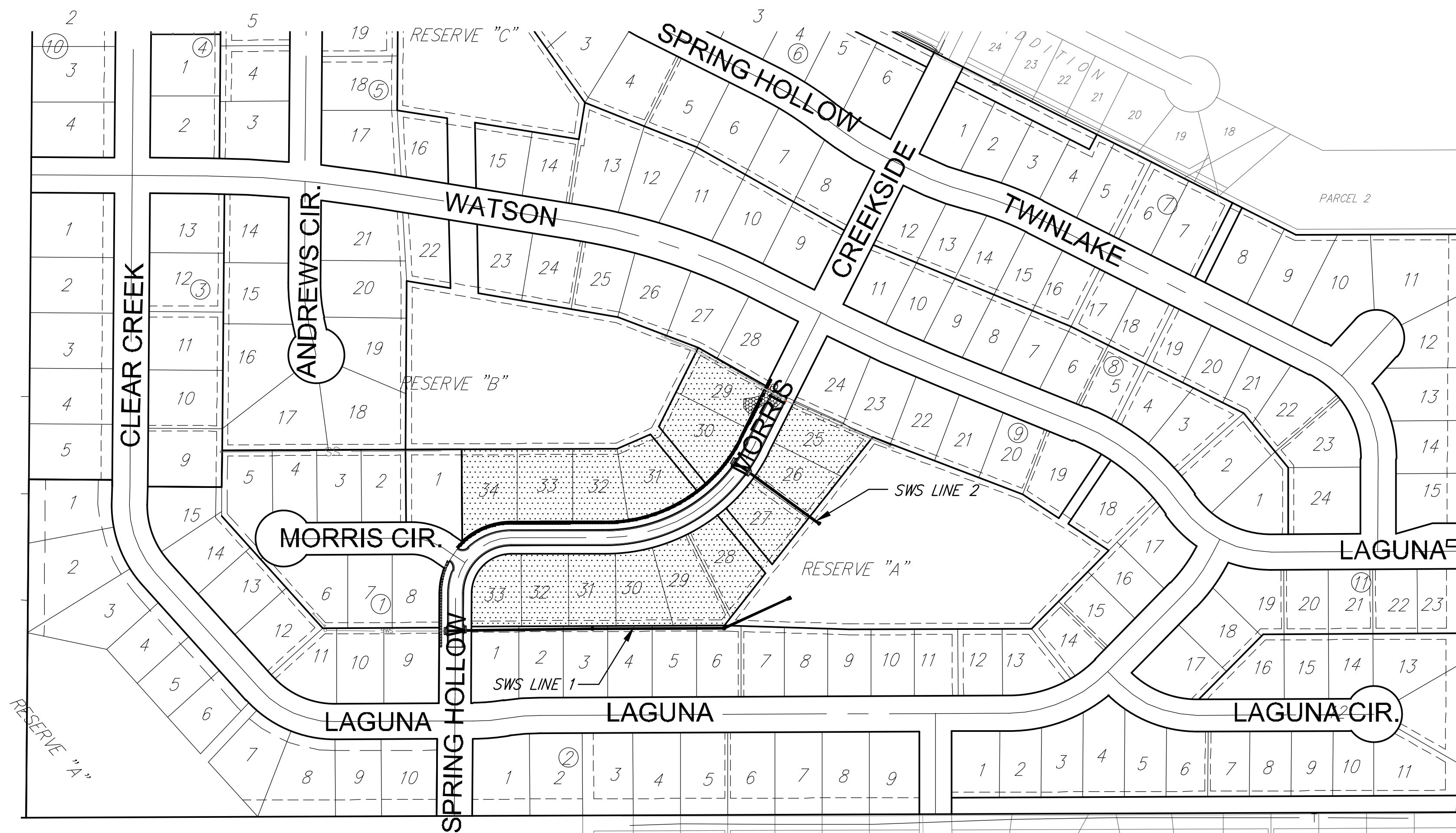
2. Underground utility service lines and overhead utility pole lines are to be adjusted as necessary by others prior to construction unless the plans specifically call for their adjustment by the Contractor or unless the plans specifically identify a utility to be adjusted by its owner during construction. Existing utilities and their location, as shown on the plans, represent the best information obtainable for design. Location information has been obtained from the various utility companies and is either from company record drawings or company-provided field locations. The Contractor will be required to work around existing utilities within the right-of-way which do not conflict with proposed construction.

3. Rubble from the removal of miscellaneous structures which are to be wasted shall be disposed of on sites to be provided by the Contractor. These sites shall be approved by the Engineer as to suitability, appearance and site location. Locations that, in the opinion of the Engineer, will leave an unsightly appearance will not be approved.

4. All disposal sites must be approved by the Kansas Department of Health and Environment. Material either stockpiled or disposed of in a flood plain would require a Kansas State Board of Agriculture permit. Any material dumped in waters of the United States or wetlands is subject to U.S. Corps permitting regulations. Any material buried or stockpiled beyond approved of Engineers construction limits would require additional archeological investigations unless buried in a previously approved borrow location.

5. The Contractor shall give all property owners and/or tenants of developed property directly abutting the construction of this project a minimum of ten (10) days advance notice prior to start of construction.

6. All excess excavation shall be retained on site in area designated by the engineer (See Sheet 16).




IMPROVEMENT DISTRICT
Gary Janzen, City Engineer
CITY OF WICHITA, KANSAS



BENCH MARK

BENCH MARK#1: SQUARE ON SOUTH END HEADWALL 58.5± S. OF NW COR. SEC. 26, T27, R2E. ELEV. 1308.79 (NAVD88)

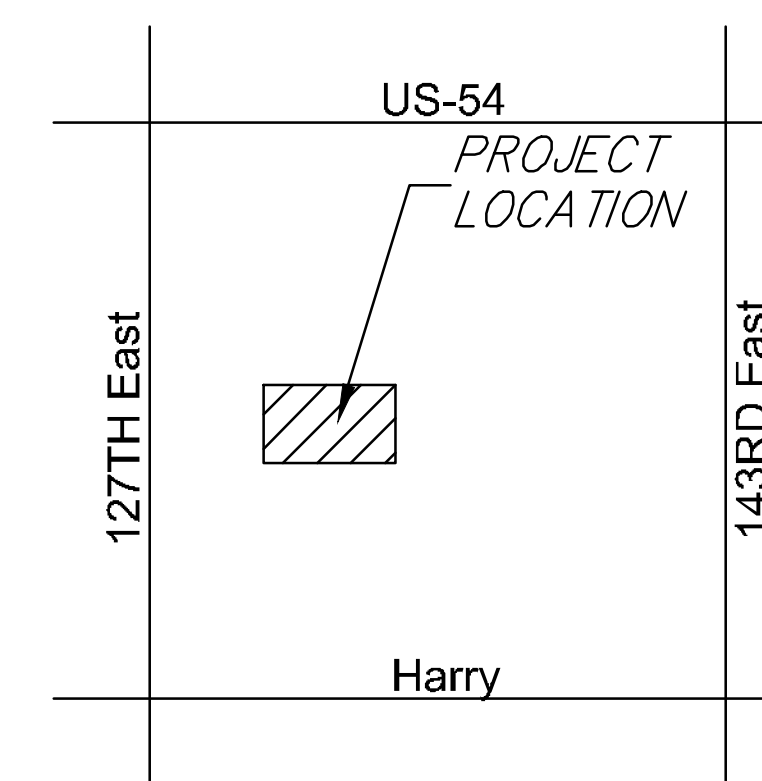
BENCH MARK#2: RAILROAD SPK. WEST FACE OF POWER POLE 30± WEST OF EAST 1/4 COR. SEC. 26, T27, R2E. ELEV. 1314.88 (NAVD88)

INDEX OF SHEETS

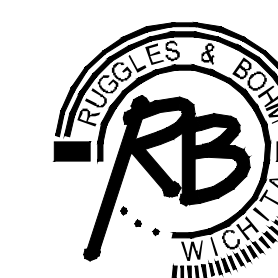
1. TITLE
2. 29' B-B DETAIL
3. DETAILED STREET SECTION
4. WHEEL CHAIR RAMP DETAIL
5. SIGNAGE DETAIL
- 6-7. MORRIS PAVING PLANS
8. INTERSECTION GRADING PLAN
9. STANDARD TYPE 1A INLET DETAIL
10. PRECAST MH
11. FRAME COVER
12. BEEHIVE MH DETAIL
13. SWS LINE 1
14. SWS LINE 1
15. SWS LINE 2
16. EROSION CONTROL PLAN
- 17-21. EROSION CONTROL DETAILS
22. 4 CORNER LOT GRADING PLAN
23. ADDITION BUBBLE MAP
- 23A. PAVING BUBBLE MAP
- 24-28. CROSS SECTIONS
29. FINAL PLAT



1" = 150'



VICINITY MAP



Ruggles & Bohm, P.A.
 Engineering, Surveying, Land Planning
 924 North Main (316) 264-8008
 Wichita, Kansas 67203 (316) 264-4621 fax
 www.rbkansas.com E-mail: info@rbkansas.com