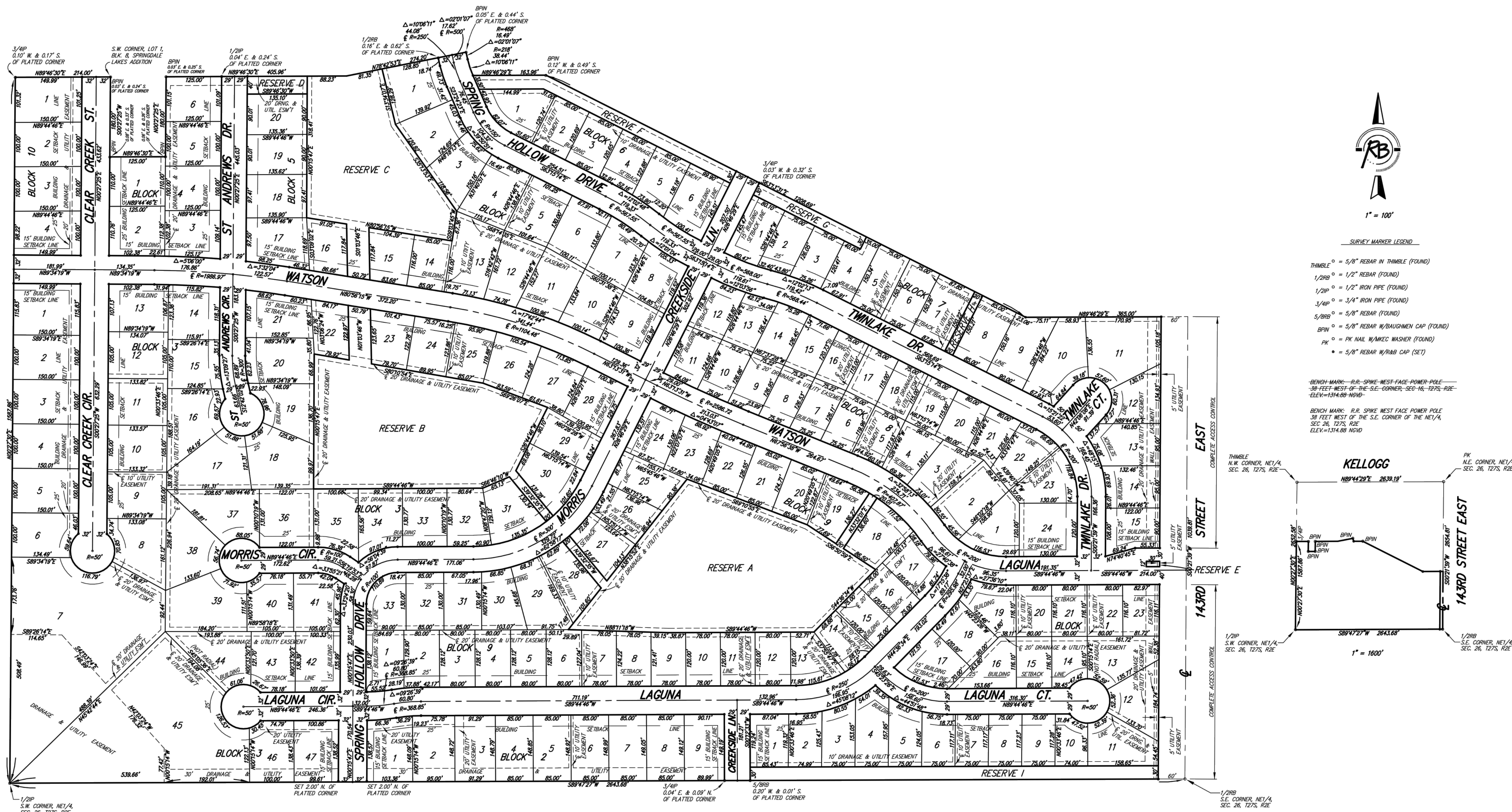


CLEAR CREEK ADDITION

Wichita, Sedgwick County, Kansas



1" = 100'

- SURVEY MARKER LEGEND**
- THIMBLE = 5/8" REBAR IN THIMBLE (FOUND)
 - 1/2" IR = 1/2" IRON PIPE (FOUND)
 - 1/2" IR = 1/2" IRON PIPE (FOUND)
 - 3/4" IR = 3/4" IRON PIPE (FOUND)
 - 5/8" IR = 5/8" REBAR (FOUND)
 - 5/8" IR = 5/8" REBAR W/BAUGHMAN CAP (FOUND)
 - PK = PK NAIL W/MKEC WASHER (FOUND)
 - = 5/8" REBAR W/RAB CAP (SET)
- BENCH MARK: R.R. SPIKE WEST FACE POWER POLE**
 38 FEET WEST OF THE S.E. CORNER, SEC. 16, T27S, R2E
 ELEV.=1314.88 NGVD
- BENCH MARK: R.R. SPIKE WEST FACE POWER POLE**
 38 FEET WEST OF THE S.E. CORNER OF THE NE1/4,
 SEC. 26, T27S, R2E
 ELEV.=1314.88 NGVD

