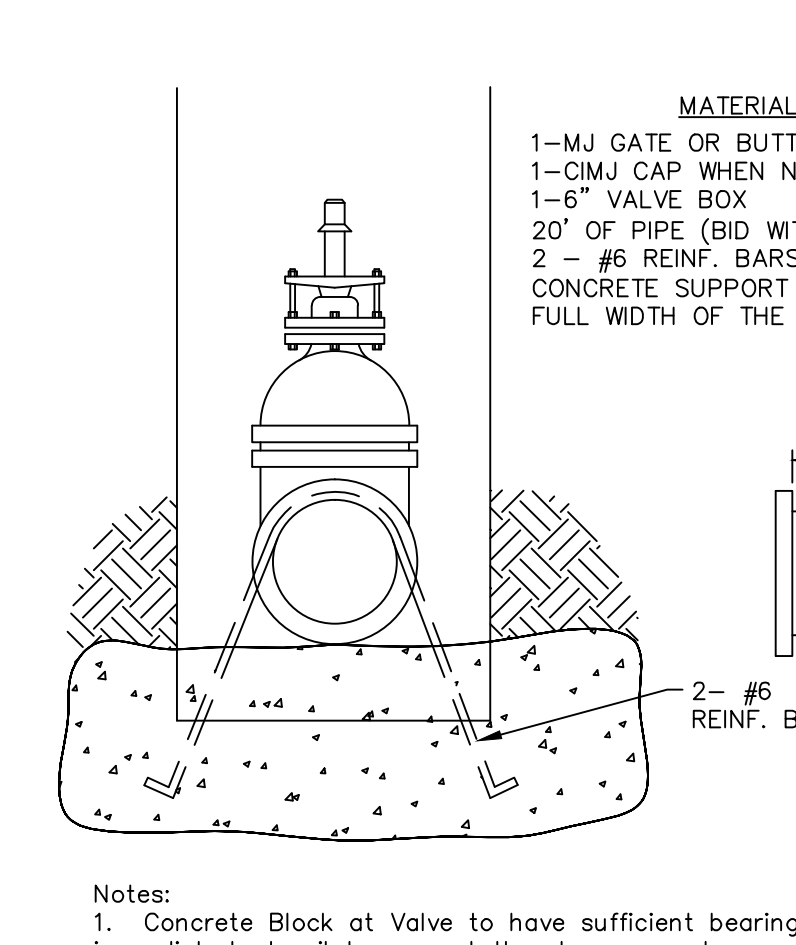
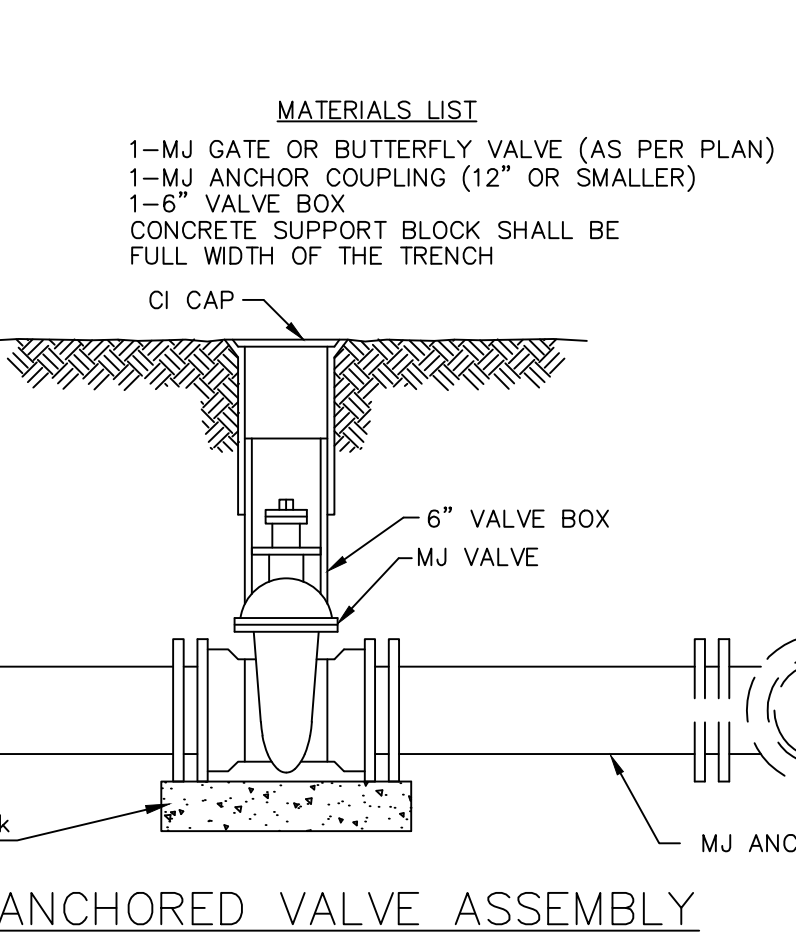
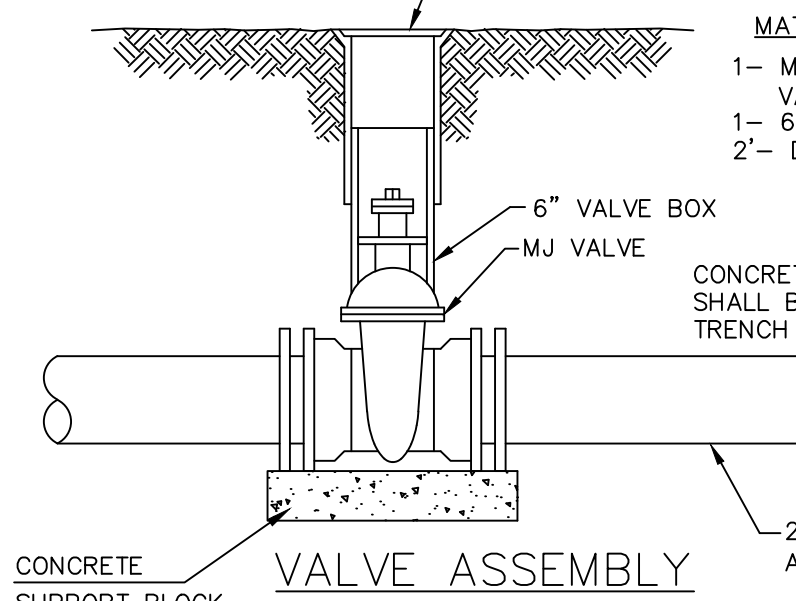
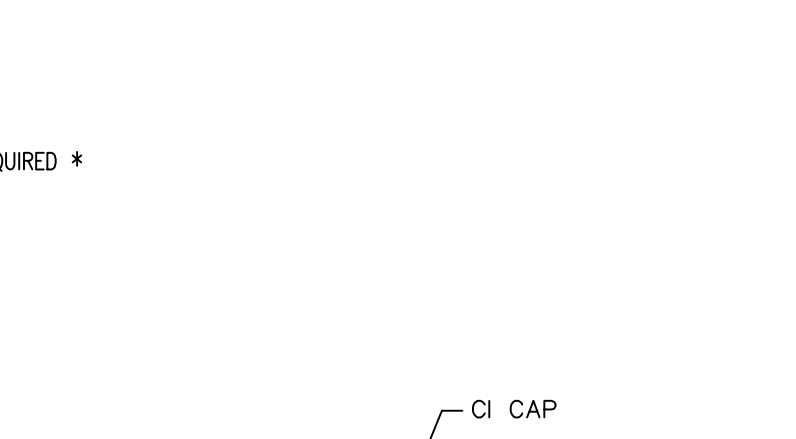
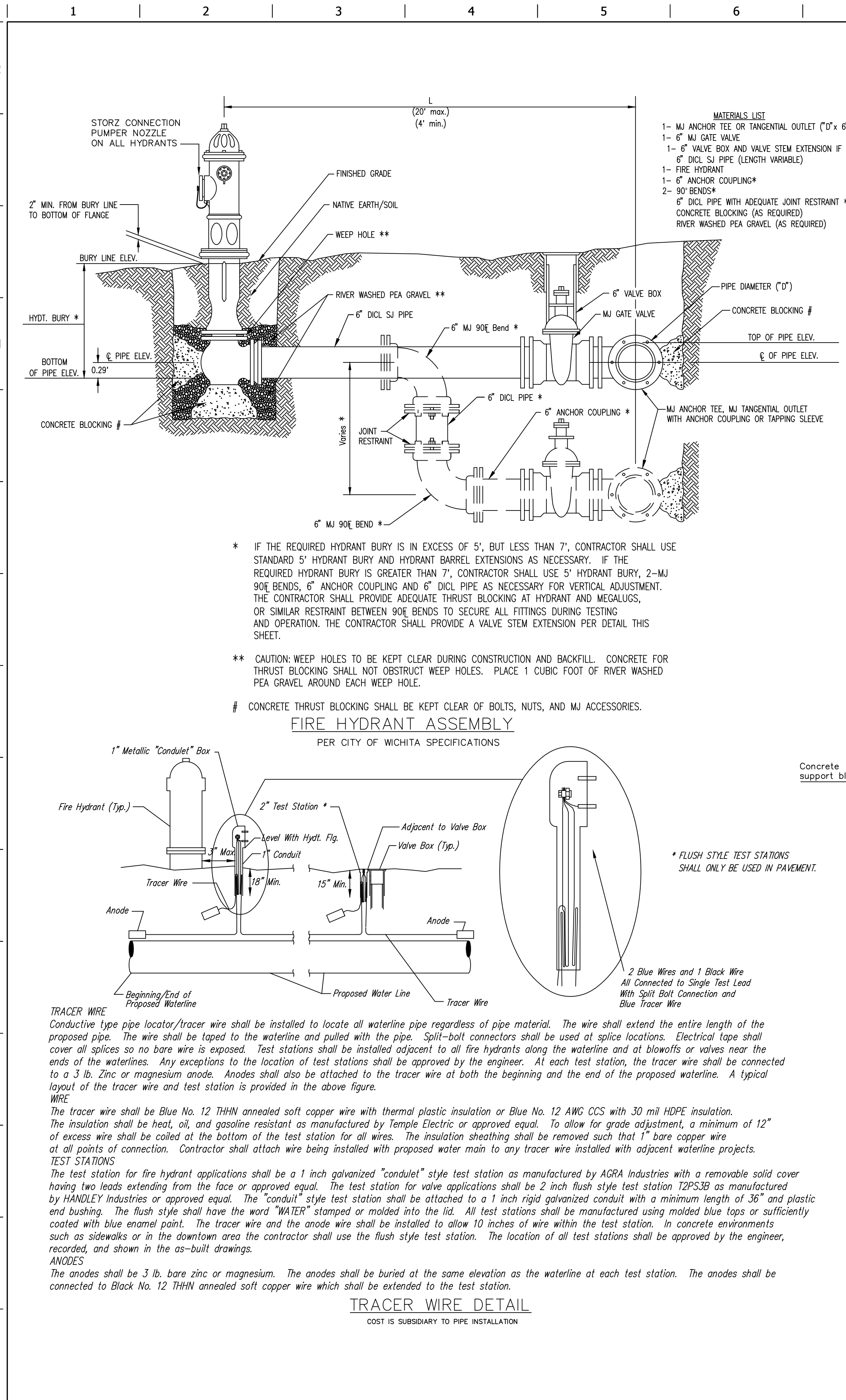
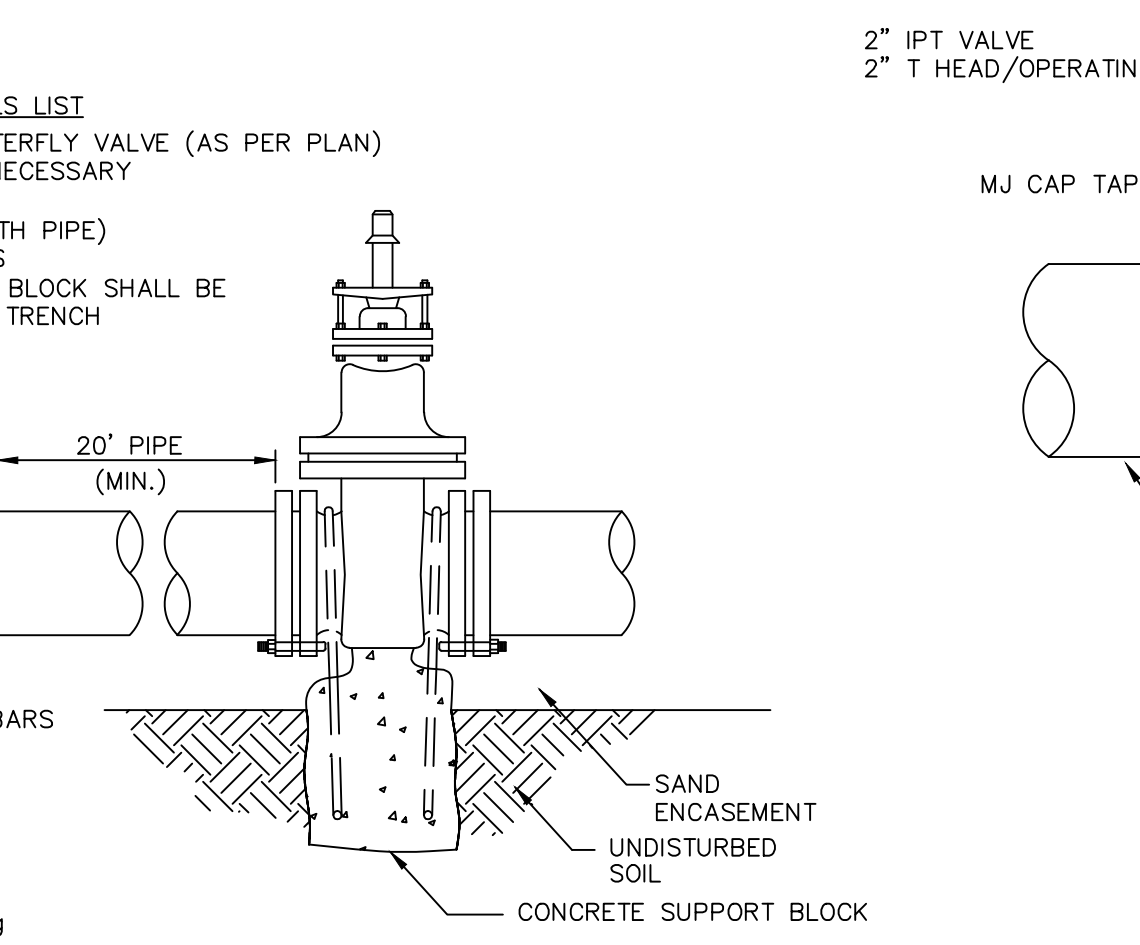
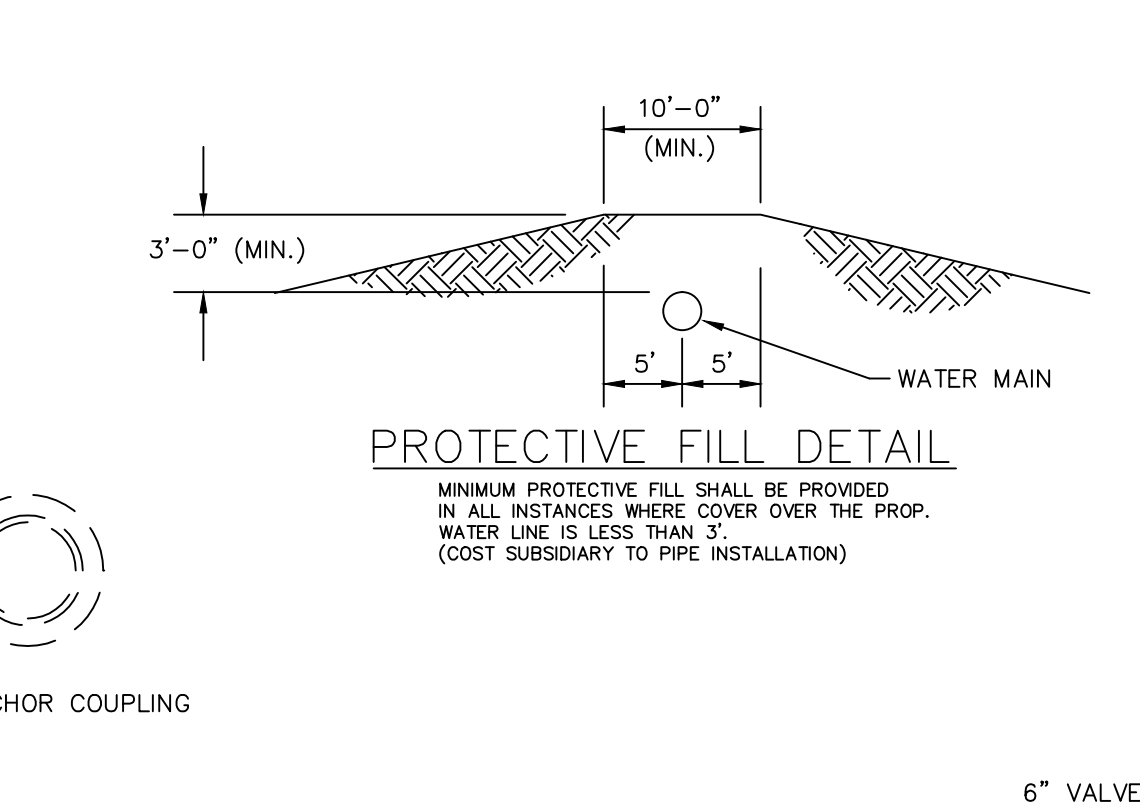
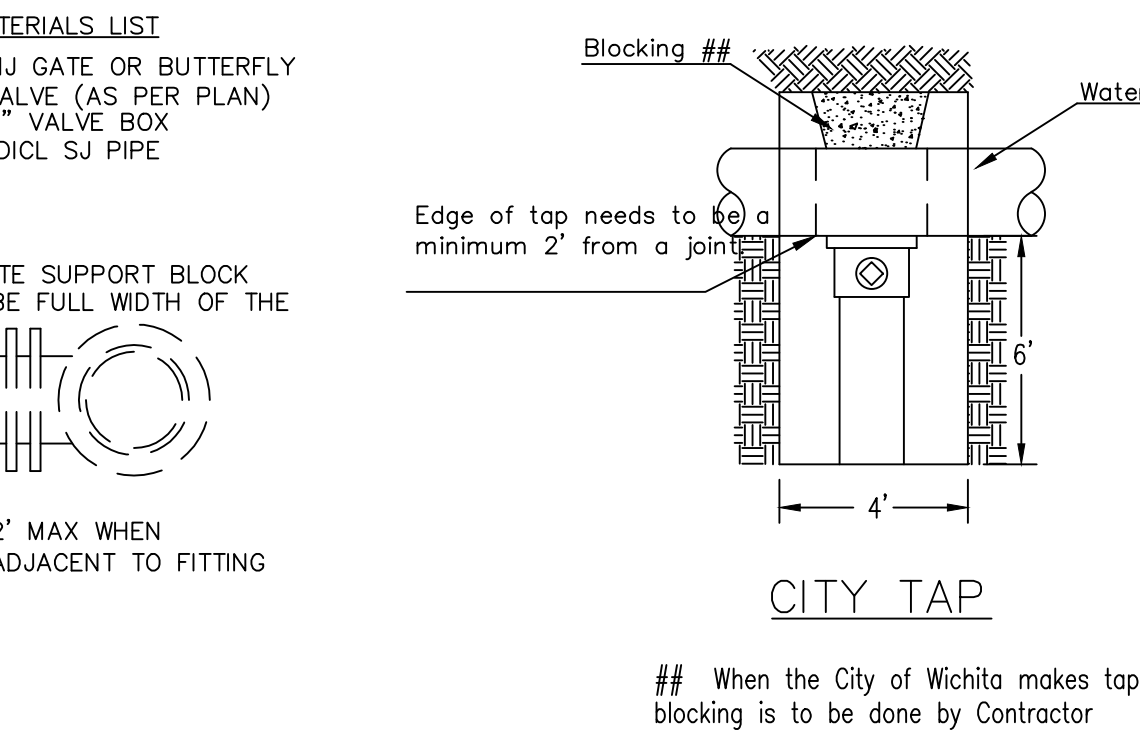


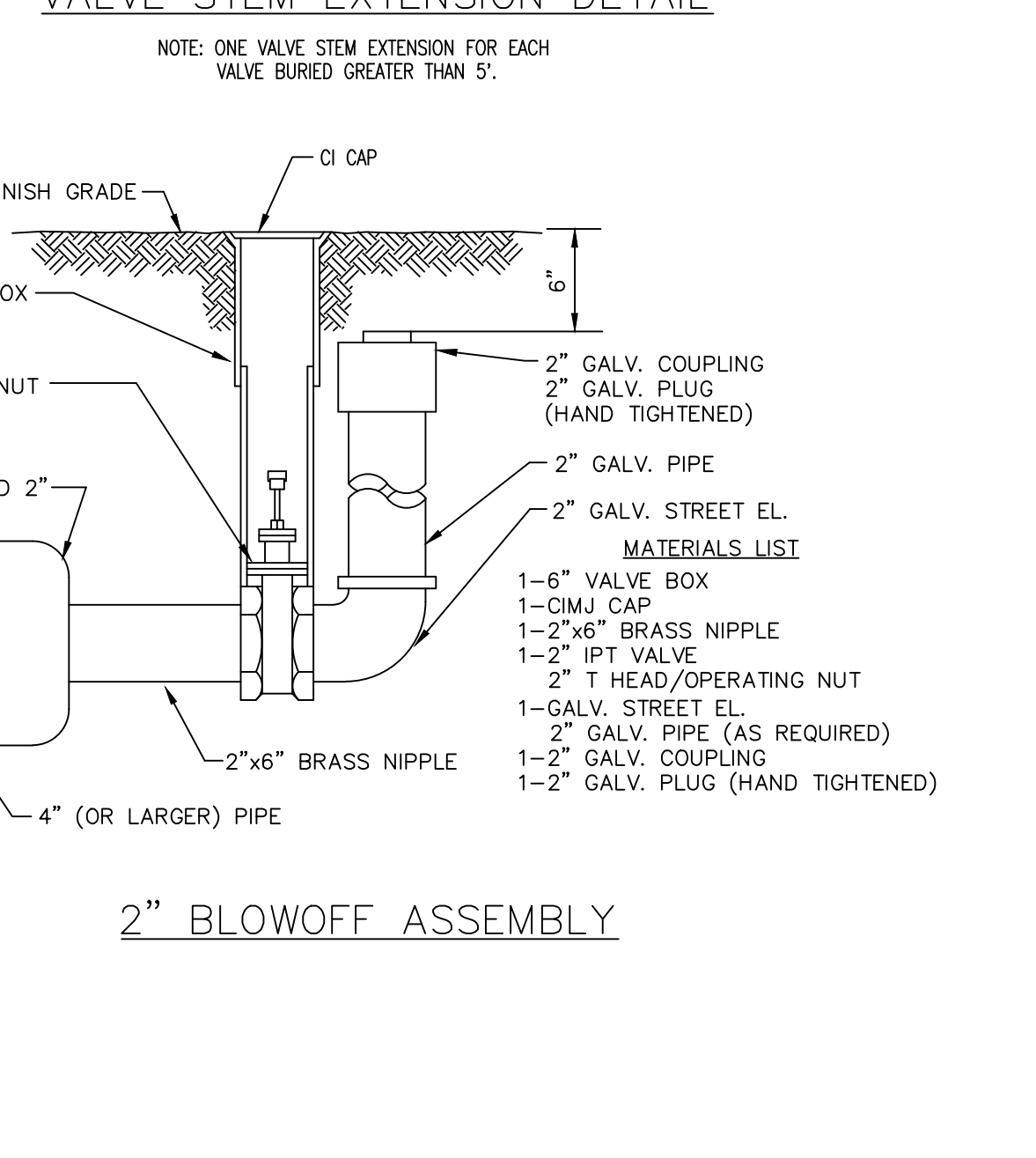
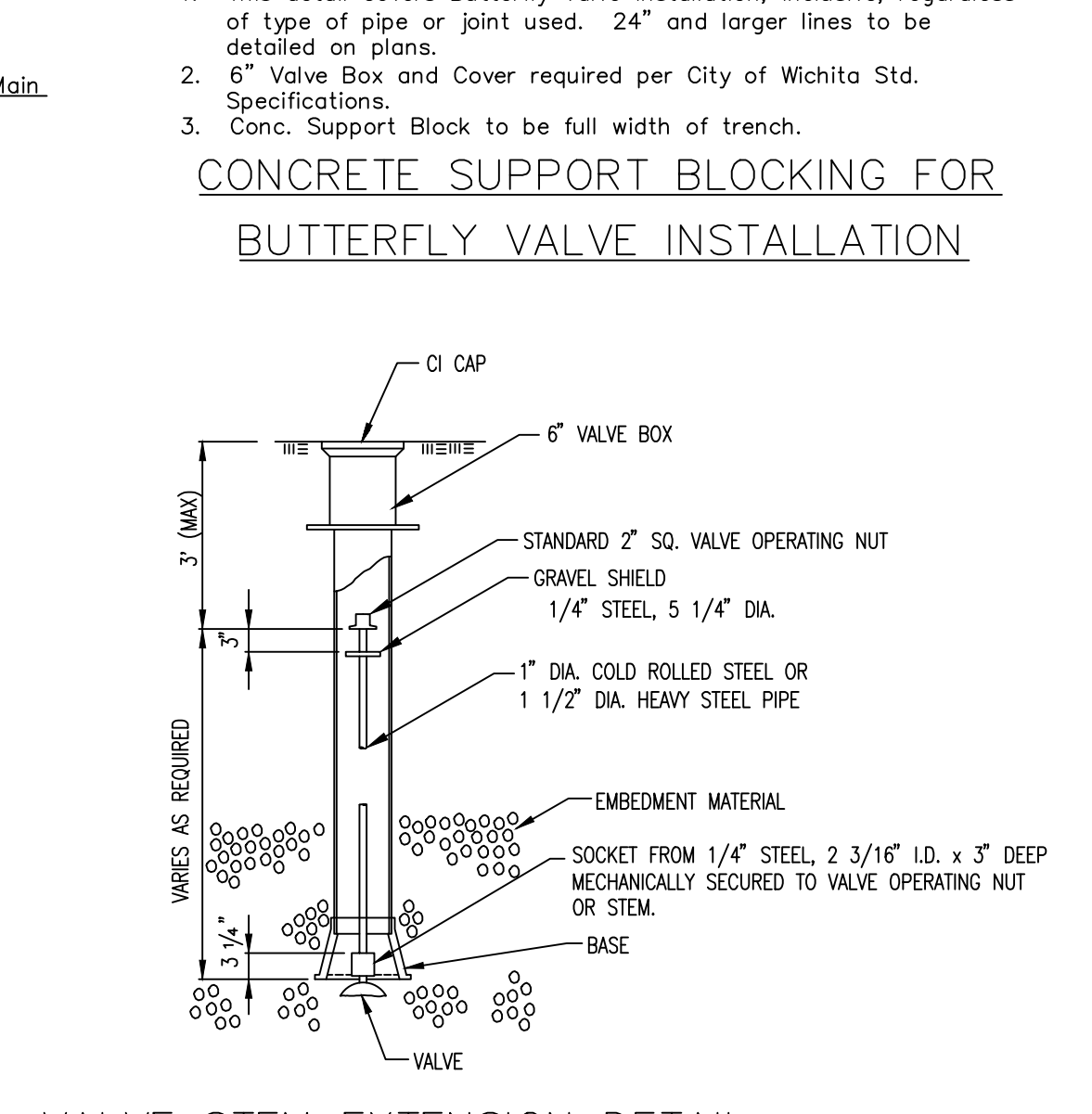
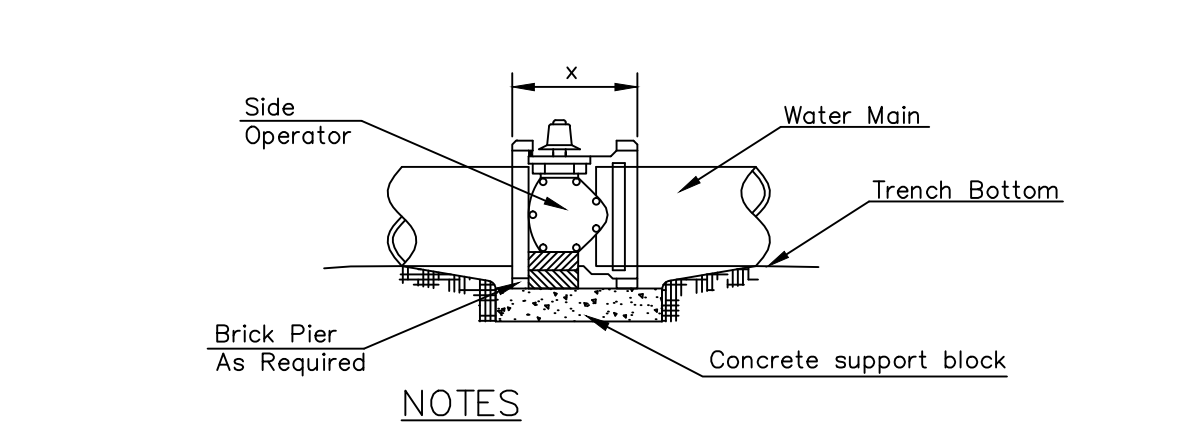
FILE LOCATION: \\Drawing Files\Project CKW 12-7-09\QT #0388R\DWG\03-0388R.PPW.dwg TAB NAME: PFW FH DTI USER: cwiniker SAVED: 9/20/2013 9:09 AM PLOTTED: 9/20/2013 9:12 AM



FIRE HYDRANTS REQUIRED				
STATION	BURY LINE ELEVATION	TOP OF PIPE ELEVATION	FIRE HYDRANT BURY REQUIRED*	VALVE STEM EXT. REQUIRED (ft)*
STA: 0+00.00	1393.96	-1388.13	6.0'	4.0'
		1386.5 +/-		



THRUST AT VALVES	
VALVE	THRUST AT 150 #/sq
4"	1809 lbs.
6"	4245 lbs.
8"	7540 lbs.
12"	16965 lbs.



CITY OF WICHITA
PUBLIC WORKS & UTILITIES ENGINEERING DIVISION

GARY JANZEN, P.E.
CITY ENGINEER

STANDARD WATER ASSEMBLY DETAIL

PROJECT NUMBER: OCA NUMBER: DATE: 04/2013 SHEET: 4

CITY ENGINEER'S OFFICE
CITY HALL - SEVENTH FLOOR
455 NORTH MAIN STREET
WICHITA, KANSAS 67202-1620
(316) 268-4501

HARLAN DALE FORBES
LICENSED PROFESSIONAL ENGINEER
KANSAS
10891
8.29.13

PROJECT NO.: 20131216

CED
CERTIFIED ENGINEERING DESIGN, P.A.
1935 W. MAPLE STREET
WICHITA, KANSAS 67213
PH: (316) 262-8808
FAX: (316) 262-1669

QuikTrip No. 0388R
3820 NORTH ROCK ROAD
WICHITA, KS

QT

© COPYRIGHT QUIKTRIP CORPORATION 2011
ANY UNAUTHORIZED USE, REPRODUCTION,
PUBLICATION, DISTRIBUTION, OR SALE IN
WHOLE OR IN PART, IS STRICTLY FORBIDDEN.

PROTOTYPE: P-75 (5/01/13)
DIVISION:
VERSION: 001
DESIGNED BY: CKW
DRAWN BY: CKW
REVIEWED BY: HDF

ORIGINAL ISSUE DATE: 07-01-13

SHEET TITLE: FIRE HYDRANT ASSEMBLY DETAILS
SHEET NUMBER: 4