

MH # 5744-707  
Replace Manhole Frame & Cover  
Rework Manhole Bench & Invert  
Approx depth = 4.9 ft

Replace Service Connection:  
Abandon 14 lf of 4" VCP and cleanout #709,  
connect to existing service line and run new  
pipe to MH 5744-707

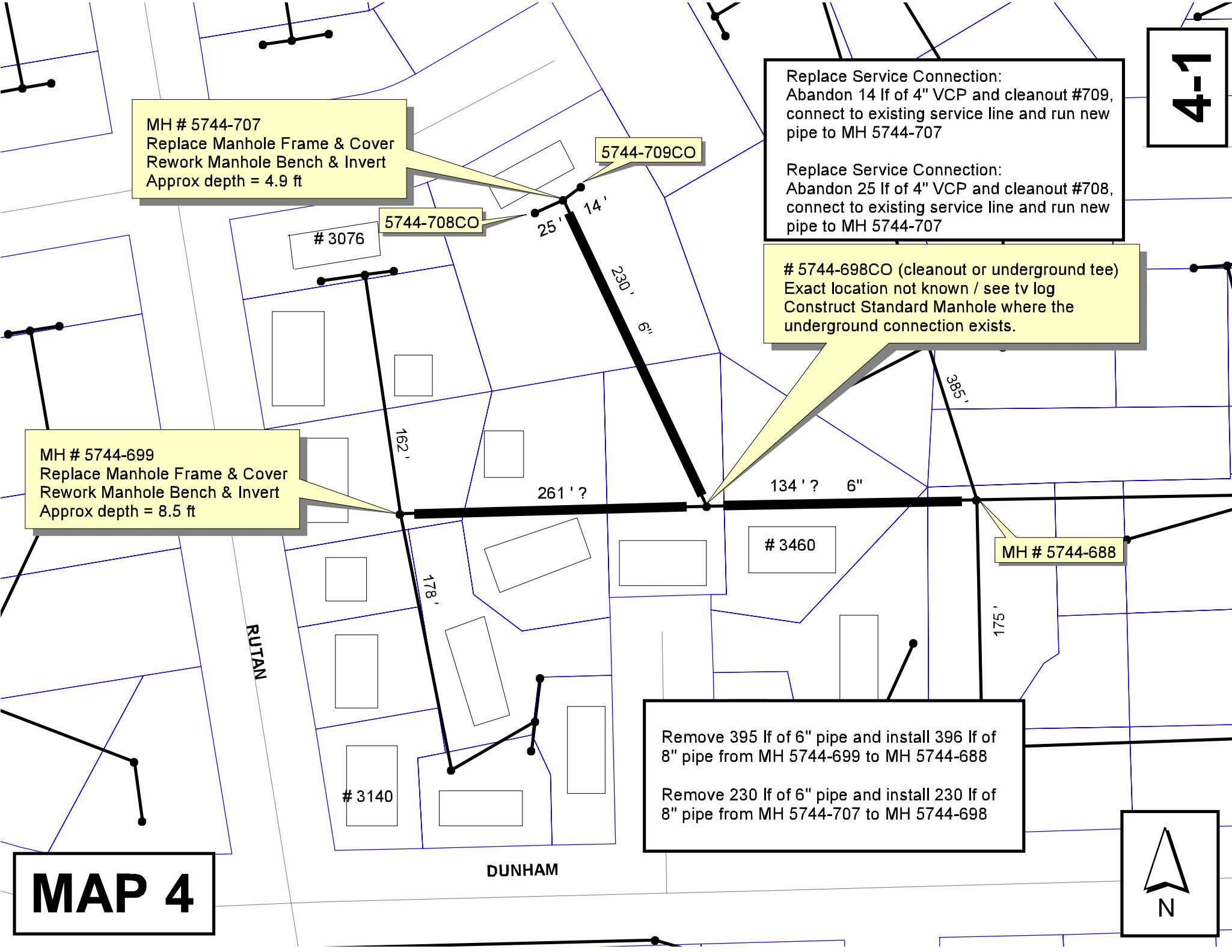
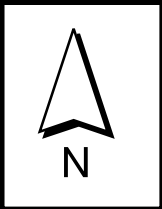
Replace Service Connection:  
Abandon 25 lf of 4" VCP and cleanout #708,  
connect to existing service line and run new  
pipe to MH 5744-707

# 5744-698CO (cleanout or underground tee)  
Exact location not known / see tv log  
Construct Standard Manhole where the  
underground connection exists.

MH # 5744-699  
Replace Manhole Frame & Cover  
Rework Manhole Bench & Invert  
Approx depth = 8.5 ft

Remove 395 lf of 6" pipe and install 396 lf of  
8" pipe from MH 5744-699 to MH 5744-688

Remove 230 lf of 6" pipe and install 230 lf of  
8" pipe from MH 5744-707 to MH 5744-699



4-2

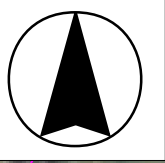
5744-707

RUTAN

5744-699

5744-688

Aerial View



# Television Inspection Master Report

6/24/2003  
11:24:32AM

US Manhole: 5744-699  
DS Manhole: 5744-688

3108 S RUTAN ST

Date Insp: 7/31/2000

Basin: C01B

Dir Televised: Upstream To Downstream

## Pipe Information

Shape:	Round	Length Status:	Project No.:	I-059
Dia/Ht Width:	6 0	Material:	VCP	Index:
Length:	395.0	Slope:	0.622	Surface:
Pipe Sec Length:	Comment:			

## Inspection Information

Crew:	694	Percent Full:	10	Tape ID:	V-2495
Weather:	Sunny	Purpose:	TV Existing Line	Counter Start:	0.00
Surface Cond:	Trees & Fences	Flow:	Normal Flow	Counter Stop:	
Dyed Test:	No				

Obs. #	VTR Counter Comment	Dist	Location	Description	Rating	Obsrvd (gpm)	Est. (gpm)	Ratings Struct	Clean	Remain (gpm)
1		0.0	US Manhole 5744-699							
		0.0	PVC Begins							
2		10.0	PVC ends	Roots @ joint	1					0.000
4		13.0	Crown	Crack-Radial	1		0.001	1	0	0.001
5		15.0	Quad 1 / U-Rt	Crack-Radial	1		0.001	1	0	0.001
6		18.0	Crown	Crack-Radial	1		0.001	1	0	0.001
7		24.0	Invert	Sag / 10% FLOW.						
8		25.0	Invert	Sag / 15% FLOW.						
9		26.0	Invert	Sag / 40% FLOW.						
10		28.0	Invert	Sag / 10% FLOW.						
11		28.0	Crown	Crack-Horizontal	3		0.004	5	0	0.004
12		33.0	Crown	Crack-Horizontal	3					0.000
13		35.0	Invert	Sag / OUT OF SAG.						
14		38.0	Quad 4 / U-Lt	Crack-Radial	1		0.001	1	0	0.001
15		40.0	Crown	Crack-Radial	2					0.000
16		43.0	Crown	Crack-Horizontal	3		0.004	5	0	0.004
17		46.0	Quad 4 / U-Lt	Crack-Radial	4					0.000
18		48.0	Invert	Crack-Horizontal	3		0.004	5	0	0.004
19		61.0	Invert	Crack-Radial	4					0.000
20		63.0	Joint	Offset	3		0.010	20	0	0.010
21		64.0	Invert	Sag / 40% FLOW.						
22		67.0	Invert	Sag / UNDER WATER.						
23		68.0	Invert	Sag / 40% FLOW.						
24		69.0	South	Break-In Conn TAP STICKS OUT APPROX 1 INCH						
25		70.0	North	Wye Service	1		0.000	0	0	0.000
26		71.0	Invert	Sag / 20% FLOW.						
27		76.0	Invert	Sag / 40% FLOW.						
28		83.0	Invert	Sag / 10% FLOW.						
29		85.0	Invert	Sag / OUT OF SAG.						
30		87.0	Quad 3 / L-Lt	Crack-Radial	1		0.001	1	0	0.001
31		91.0	Quad 4 / U-Lt	Crack-Radial	1		0.001	1	0	0.001
32		92.0	Invert	Sag / 10% FLOW.						
33		102.0	Invert	Sag / OUT OF SAG.						
34		107.0	South	Wye Service	1		0.000	0	0	0.000
35		109.0	Invert	Sag / 35% FLOW.						

4-3

# Television Inspection Master Report

6/24/2003  
11:24:32AM

US Manhole: 5744-699      3108 S RUTAN ST      Date Insp: 7/31/2000      Basin: C01B  
DS Manhole: 5744-688

36	110.0	North	Wye Service	1	0.000	0	0	0.000
37	110.0	Wye Service	Roots	4	0.010	10	25	0.010
38	114.0	Invert	Sag / 20% FLOW.					
39	119.0	Invert	Sag / 10% FLOW.					
40	120.0	Invert	Sag / OUT OF SAG.					
41	121.0	Crown	Crack-Horizontal	3	0.004	5	0	0.004
42	123.0	Joint	Offset	3	0.010	20	0	0.010
43	123.0	Crown	Crack-Radial	3				0.000
44	125.0	Invert	Sag / 30% FLOW.					
45	125.0	Invert	Sag / UNDER WATER					
Pipe drops down at a joint, camera is under water / also there is grease at the crown								
46	133.0	Invert	Sag / 40% FLOW.					
47	134.0	Crown	Crack-Radial	3				
48	135.0	Invert	Sag / 10% FLOW.					
49	135.0	Quad 2 / L-Rt	Crack-Radial	1	0.001	1	0	0.001
50	136.0	Quad 2 / L-Rt	Crack-Radial	2				0.000
51	137.0	Invert	Sag / OUT OF SAG.					
52	141.0	Quad 2 / L-Rt	Crack-Radial	2	0.002	2	0	0.002
53	147.0	Crown	Grease	4				0.000
54	147.0	Invert	Sag / 15% FLOW.					
55	149.0	Crown	Grease	4				
56	154.0	Invert	Sag / 10% FLOW.					
57	165.0	South	Break-In Conn	1	0.001	0	0	0.001
58	165.0	Break-In-Connection	Roots	3	0.008	5	8	0.008
59	165.0	Invert	Sag / 15% FLOW.					
60	170.0	Invert	Sag / UNDER WATER.					
61	179.0	Invert	Sag / 10% FLOW.					
62	183.0	Invert	Crack-Radial	3	0.004	5	0	0.004
63	192.0	Invert	Sag / OUT OF SAG.					
64	195.0	South	Break-In Conn	1	0.001	0	0	0.001
65	199.0	Invert	Sag / 10% FLOW.					
66	201.0	Invert	Sag / 20% FLOW.					
67	208.0	Crown	Crack-Radial	3				
68	212.0	Invert	Sag / 15% FLOW.					
69	213.0	Crown	Crack-Radial	3	0.004	5	0	0.004
70	234.0	Invert	Sag / 10% FLOW.					
71	235.0	Joint	Roots	1				
72	235.0	Invert	Sag / OUT OF SAG.					
73	238.0	Crown	Crack-Radial	2				
74	240.0	Joint	Roots	1	0.002	1	1	0.002
75	240.0	Crown	Crack-Horizontal	2	0.002	2	0	0.002
76	243.0	Joint	Roots	1	0.002	1	1	0.002
77	244.0	Invert	Crack-Radial	3				0.000
78	247.0	Invert	Sag / 10% FLOW.					
79	249.0	Invert	Sag / 25% FLOW.					
80	250.0	Invert	Sag / 40% FLOW.					
81	251.0	Quad 1 / U-Rt	Crack-Radial	2				
82	251.0	Joint	Roots	2	0.004	2	4	0.004
83	251.0	South	Break-In Conn	1	0.001	0	0	0.001
UNDER WATER.								
84	252.0	Invert	Sag / OUT OF SAG.					
85	253.0	Joint	Offset	3	0.010	20	0	0.010
86	254.0	Joint	Roots	1	0.002	1	1	0.002

**4-4**

# Television Inspection Master Report

6/24/2003  
11:24:32AM  
C01B

US Manhole: 5744-699  
DS Manhole: 5744-688

3108 S RUTAN ST

Date Insp: 7/31/2000

Basin:

87	259.0	South	Wye Service	1	0.000	0	0	0.000
88	259.0	Wye Service	Roots	2	0.004	2	4	0.004
89	261.0	North	Wye Service	1	0.000	0	0	0.000
(has flow coming in ... could this be the cleanout or underground tee 5744-698CO?)								
90	269.0	Quad 4 / U-Lt	Crack-Radial	1	0.001	1	0	0.001
91	270.0	Quad 4 / U-Lt	Crack-Radial	2	0.002	2	0	0.002
92	275.0	Quad 3 / L-Lt	Crack-Radial	2	0.002	2	0	0.002
93	278.0	Quad 3 / L-Lt	Crack-Radial	2				0.000
94	281.0	Invert	Sag / 10% FLOW.					
95	283.0	Invert	Sag / 20% FLOW.					
96	287.0	Invert	Sag / 10% FLOW.					
97	288.0	Invert	Sag / OUT OF SAG.					
98	291.0	Invert	Crack-Radial	3	0.004	5	0	0.004
99	293.0	South	Wye Service	1	0.000	0	0	0.000
100	293.0	Wye Service	Roots	2	0.004	2	4	0.004
101	295.0	Joint	Roots	1	0.002	1	1	0.002
102	300.0	Quad 4 / U-Lt	Broken Pipe	4				0.000
103	320.0	Crown	Crack-Radial	2				
104	355.0	Quad 1 / U-Rt	Crack-Radial	2	0.002	2	0	0.002
105	359.0	Invert	Sag / 10% FLOW.					
106	360.0	Crown	Crack-Radial	2	0.002	2	0	0.002
107	366.0	Invert	Sag / OUT OF SAG.					
108	375.0	Invert	Sag / 10% FLOW.					
109	380.0	Invert	Sag / OUT OF SAG.					
110	391.0	Quad 4 / U-Lt	Broken Pipe	5				
111	395.0	DS Manhole 5744-688						

4-5

# Television Inspection Master Report

6/24/2003  
11:24:32AM

US Manhole: 5744-709CO

DS Manhole: 5744-707

3040 S RUTAN CT

Date Insp: 2/21/2003

Basin: C01B

Dir Televised: Downstream To Upstream

## Pipe Information

Shape:	Round	Length Status:	Project No.:	I-060
Dia/Ht	Width: 4 0	Material:	VCP	Index:
Length:	20.0	Slope:	0.400	Surface:
Pipe Sec Length:	Comment:			

## Inspection Information

Crew:	694	Percent Full:	15	Tape ID:	V-3819
Weather:	Cloudy	Purpose:	TV Existing Line	Counter Start:	36;51
Surface Cond:	N/A	Flow:	Normal Flow	Counter Stop:	
Dyed Test:	No				

Obs. #	VTR Counter Comment	Dist	Location	Description	Rating	Obsrvd (gpm)	Est. (gpm)	Ratings			
								Struct	Clean	Remain (gpm)	
1		0.0	DS Manhole / tv against the flow								
2		3.0	Joint	Offset	3		0.010	20	0	0.010	
3		13.0	North	Wye Service	1		0.000	0	0	0.000	
	3040 S. RUTAN CT.										
4		14.0	US Manhole								

THIS LINE IS 14FT AND NOT 20FT AS RECORDS INDICATED. WE MEASURED THIS WITH A TAPE MEASURE.

**4-6**

# Television Inspection Master Report

6/24/2003  
11:24:32AM

US Manhole: 5744-708CO      Date Insp: 2/21/2003      Basin: C01B  
DS Manhole: 5744-707

3040 S RUTAN CT

Dir Televised: Downstream To Upstream

## Pipe Information

Shape: Round      Length Status:      Project No.: I-060  
Dia/Ht Width: 4      0      Material: VCP      Index:  
Length: 25.0      Slope: 0.400      Surface:  
Pipe Sec Length:      Comment:

## Inspection Information

Crew: 694      Percent Full: 5      Tape ID: V-3819  
Weather: Cloudy      Purpose: TV Existing Line      Counter Start: 39;21  
Surface Cond: N/A      Flow: Normal Flow      Counter Stop:  
Dyed Test: No

Obs. #	VTR Counter Comment	Dist	Location	Description	Rating	Obsrvd (gpm)	Est. (gpm)	Ratings		
								Struct	Clean	Remain (gpm)
1		0.0	DS Manhole / TV AGAINST THE FLOW							
2		4.0	Joint	Roots	4	0.010	10	25	0.010	
3		5.0	Joint	Roots	4	0.010	10	25	0.010	
4		7.0	Joint	Roots	3	0.008	5	8	0.008	
5		9.0	Joint	Roots	3	0.008	5	8	0.008	
6		11.0	Joint	Roots	3	0.008	5	8	0.008	
7		13.0	Joint	Roots	3	0.008	5	8	0.008	
8		15.0	Joint	Roots	4	0.010	10	25	0.010	
9		17.0	Joint	Roots	3	0.008	5	8	0.008	
10		18.0	North	Wye Service	1	0.000	0	0	0.000	
11	3040 S. RUTAN CT.	25.0	US Manhole							

THIS LINE IS IN GOOD CONDITION BUT DOES NEED KNIFED. THIS IS ONLY A 4' LINE.

**4-7**

# Television Inspection Master Report

6/24/2003  
11:24:32AM

US Manhole: 5744-707 3040 S RUTAN CT Date Insp: 2/19/2003 Basin: C01B  
DS Manhole: 5744-698CO

Dir Televised: Upstream To Downstream

## Pipe Information

Shape: Round Length Status: Project No.: I-060  
Dia/Ht Width: 6 0 Material: VCP Index:  
Length: 220.0 Slope: 0.636 Surface:  
Pipe Sec Length: Comment:

## Inspection Information

Crew: 694 Percent Full: 15 Tape ID: V-3811  
Weather: Sunny Purpose: TV Existing Line Counter Start: 38:58  
Surface Cond: Trees & Fences Flow: Normal Flow Counter Stop:  
Dyed Test: No

Obs. #	VTR Counter Comment	Dist	Location	Description	Rating	Obsrvd (gpm)	Est. (gpm)	Ratings		
								Struct	Clean	Remain (gpm)
1		0.0	US Manhole 5744-707							
2		7.0	Joint	Roots	2		0.004	2	4	0.004
3		9.0	Joint	Roots	3		0.008	5	8	0.008
4		11.0	Joint	Roots	3		0.008	5	8	0.008
5		14.0	Joint	Roots	3		0.008	5	8	0.008
6		21.0	Invert	Sag / 35% FLOW						
7		24.0	Invert	Sag / 40% FLOW						
8		29.0	Invert	Sag / OUT OF SAG						
9		33.0	Camera Lens Submerge	Sag						
10		35.0	Camera Lens Submerge	Sag						
11		39.0	Invert	Sag / OUT OF SAG						
12		42.0	Camera Lens Submerge	Sag						
13		46.0	Invert	Sag / OUT OF SAG						
14		46.0	Joint	Roots	3		0.008	5	8	0.008
15		51.0	Invert	Sag / 35% FLOW						
16		52.0	Camera Lens Submerge	Sag						
17		72.0	Invert	Roots	5		0.030	18	100	0.030

WE CAN NO LONGER TELEVISION ANY FURTHER DUE TO THE OBSTRUCTION IN THE LINE. THIS LINE NEEDS TO HAVE A DOWNSTREAM M.H. INSTEAD OF A CLEANOUT TO HAVE ACCESS.

Televising is incomplete.

4-8