

PRIVATE STORM WATER SEWER

TO SERVE

# CARGILL CRUSH PLANT DRAINAGE

PROJECT NO. 208PPD

THE CITY OF WICHITA, KANSAS  
GARY JANZEN, P.E. - CITY ENGINEER

OCA NO. 607861

## GENERAL NOTES

- UNLESS SHOWN OR OTHERWISE STATED ON THESE DRAWINGS, MATERIALS AND CONSTRUCTION SHALL BE IN ACCORDANCE WITH THE CITY OF WICHITA STANDARD SPECIFICATIONS.
- THE TOPS OF INLETS AND MANHOLES AS NOTED ON THE PLANS MAY VARY SO AS TO MEET PROPOSED TOP OF CURB ELEVATIONS OR PAVEMENT ELEVATIONS. THE FIELD ENGINEER SHALL LOCATE INLETS AND MANHOLES WITH REFERENCE TO PROPOSED PAVING PLANS OF THE PERTINENT STREETS.
- ALL CONCRETE SHALL BE STANDARD PAVING MIX UNLESS OTHERWISE NOTED.
- THE CONTRACTOR SHALL BE RESPONSIBLE FOR PRESERVING PROPERTY IRONS. THE CONTRACTOR SHALL BE REQUIRED TO RE-ESTABLISH ANY PROPERTY IRONS WHICH ARE DAMAGED OR DESTROYED BY HIS CONSTRUCTION OPERATIONS. SUCH IRONS SHALL BE RE-ESTABLISHED BY A LICENSED LAND SURVEYOR IN ACCORDANCE WITH STATE LAWS.
- CONTRACTOR SHALL NOTIFY UTILITY COMPANIES OF CONSTRUCTION SCHEDULING.
- EXISTING UTILITIES AND THEIR LOCATIONS, AS SHOWN ON THE PLANS REPRESENT THE BEST INFORMATION OBTAINABLE FOR DESIGN. LOCATION INFORMATION HAS BEEN OBTAINED FROM THE VARIOUS COMPANIES AND IS EITHER FROM COMPANY UTILITY DRAWINGS OR COMPANY PROVIDED FIELD LOCATIONS. THE PLAN LOCATIONS SHOWN ARE NOT GUARANTEED. ADDITIONAL EXISTING UTILITIES MAY ALSO BE ENCOUNTERED.
- CONTRACTOR WILL BE REQUIRED TO PROVIDE A MINIMUM ADVANCE NOTICE OF SEVENTY-TWO (72) HOURS TO UTILITY COMPANIES TO STARTING ANY EXCAVATION AS FOLLOWS:  
  

KANSAS ONE-CALL OR LOCAL WICHITA	800-344-7233 687-2470
----------------------------------	--------------------------

THE CONTRACTOR MUST NOTIFY THE FOLLOWING IN CASE OF EMERGENCY:

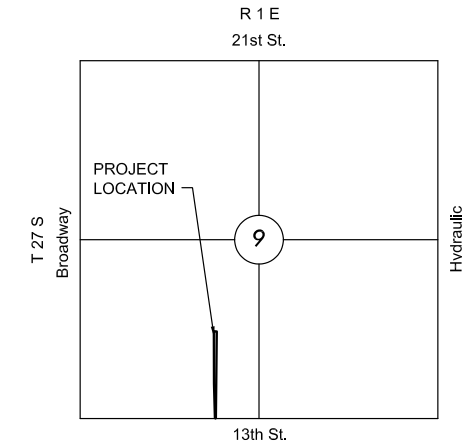
COX COMMUNICATIONS (CABLE)	262-0661
WESTAR (ELECTRIC)	383-8600
KANSAS GAS SERVICE (GAS)	832-3101
SBC (TELEPHONE)	800-870-8390
CITY OF WICHITA WATER & SEWER	262-6000
- RUBBLE FROM THE REMOVAL OF MISCELLANEOUS STRUCTURES AND EXCESS EXCAVATION WHICH IS TO BE WASTED SHALL BE DISPOSED OF ON SITES TO BE PROVIDED BY THE CONTRACTOR. THESE SITES SHALL BE APPROVED BY THE ENGINEER AS TO SUITABILITY, APPEARANCE AND SITE LOCATION. LOCATIONS THAT, IN THE OPINION OF THE ENGINEER, WILL LEAVE AN UNSIGHTLY APPEARANCE WILL NOT BE APPROVED. ALL DISPOSAL SITES MUST BE APPROVED BY THE KANSAS DEPARTMENT OF HEALTH AND ENVIRONMENT. MATERIAL EITHER STOCKPILED OR DISPOSED OF IN A FLOOD PLAIN WOULD REQUIRE A KANSAS STATE BOARD OF AGRICULTURE PERMIT. ANY MATERIAL DUMPED IN WATERS OF THE UNITED STATES OR WETLANDS IS SUBJECT TO U.S. CORPS OF ENGINEERS PERMITTING REGULATIONS. ANY MATERIAL BURIED OR STOCKPILED BEYOND APPROVED CONSTRUCTION LIMITS WOULD REQUIRE ADDITIONAL ARCHAEOLOGICAL INVESTIGATIONS UNLESS BURIED IN A PREVIOUSLY APPROVED BORROW LOCATION.
- CONTRACTOR TO COORDINATE WORK WITH OTHER UTILITY AND/OR PAVING CONTRACTORS ON SITE.
- WORK DONE UNDER THIS PROJECT IS SUBJECT TO THE CITY OF WICHITA REQUIREMENTS FOR "CONSTRUCTION OF INFRASTRUCTURE IMPROVEMENTS BY PRIVATE CONTRACT." THE CONTRACTOR SHALL BE FAMILIAR AND COMPLY WITH ALL OF THE REQUIREMENTS, INCLUDING BONDING, INSPECTION, TESTING, NOTIFICATION, PROVIDING AS-BUILT DRAWINGS, PAYING FOR ALL NECESSARY CONNECTIONS AND/OR STREET REPAIR FEES AND PROVIDING PIPE MATERIAL AND OTHER CERTIFICATIONS.
- TRAFFIC CONTROL SHALL MEET MUTCD STANDARDS.

PROPOSED IMPERVIOUS= NO CHANGE  
 PROPOSED PERVIOUS= NO CHANGE  
 EXISTING DRAINAGE AREA= 2.1 ACRES  
 $WQ_v = N/A$   
 $CP_v = N/A$

THIS PROJECT SATISFIES CHAPTER 16-32 OF THE CITY CODE THROUGH THE INSTALLATION OF A PROPRIETARY HYDRODYNAMIC SEPARATOR.

## AS-BUILT PLANS - JUNE 2014

INSPECTED BY: GENE RATH, MKEC ENGINEERING INC.  
 CONSTRUCTED BY: DONDLINGER CONSTRUCTION  
 SUPERINTENDENT: BRAD REICHENBERGER

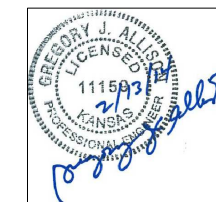


## VICINITY MAP

No Scale

## INDEX TO DRAWINGS

SHEET NO.	DESCRIPTION
1	TITLE SHEET
2	HYDROGUARD DETAIL
3	PLAN AND PROFILE
4	FINAL PLAT



## BENCHMARKS

BM #1 "□" SE CORNER OF COLUMN BASE OF SAFETY RACK  
 ELEV.=119.41 (CITY DATUM)

APPROVED AS NOTED  
 BY CITY ENGINEER OF WICHITA,  
 BY STORMWATER DEPARTMENT

Engineering: *Eric Pritch* 02-24-2014  
 Storm Water (Public Works): *Brad Reich* 02-25-2014

NOTE TO CONTRACTORS

Public Property:  
 Inspection and testing for the storm water sewer is to be provided by a Licensed Consulting Engineering Firm under contract with the Owner/Developer. Said inspection to be in accordance with the City of Wichita Standard Construction Engineering Practices and certified by a Professional Engineer licensed in the state of Kansas. No work shall be performed in dedicated easements or public rights-of-way by the Contractor without such inspection, nor shall any work be commenced without written authorization by the City Engineer. All construction and materials shall comply with the City of Wichita Specifications and Standards (on file and available in the City Engineer's Office).



PRIVATE STORM WATER SEWER PLAN FOR  
**CARGILL CRUSH PLANT DRAINAGE**  
 13TH AND MOSLEY

©2013 MKEC Engineering All Rights Reserved www.mkec.com  
 These drawings and their contents, including, but not limited to, all concepts, designs, & ideas are the exclusive property of MKEC Engineering (MKEC), and may not be used or reproduced in any way without the express consent of MKEC.

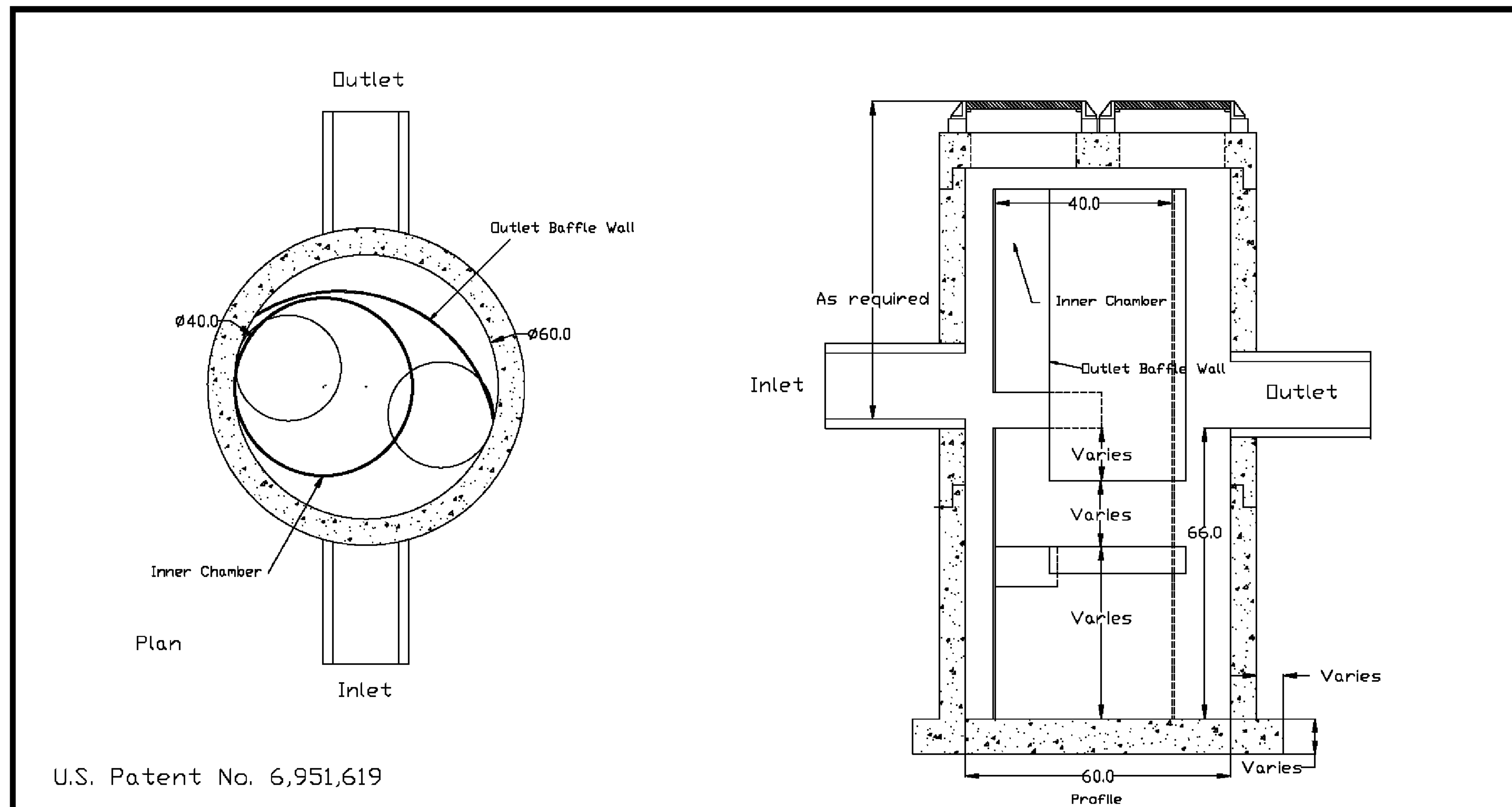
## TITLE SHEET

PROJECT NO.	208PPD	
DATE	NOV. 2013	
SCALE	1"=50'	
DESIGNED	DRAWN	CHECKED
KA	SLF	KA
#	---	##/##/##
NO.	REVISION	DATE

SHEET NO.  
 1 OF 4

J:\PROJECTS\2013\1301010590\_CARGILL CRUSH PLANT DRAINAGE\CIVIL\CAD\SW\130580-DT.DWG

PRIVATE STORM WATER SEWER PLAN FOR  
**CARGILL CRUSH PLANT DRAINAGE**  
13TH AND MOSLEY



U.S. Patent No. 6,951,619

Dimensions in Inches  
 Permanent Pool Volume = 800 US gallons  
 The Hydroguard must be cleaned after the construction period  
 if it is used as a sediment and erosion control measure  
 The Hydroguard should be inspected once per year for  
 stabilized sites  
 Inspection will determine the maintenance frequency (annual  
 maintenance or once every two years typical for stabilized  
 sites)  
 Sites with unstable conditions (exposed soil or materials  
 storage) will require more frequent inspection and maintenance

Hydroworks, LLC  
 50 S. 21st St., Kenilworth, NJ 07033  
 Phone: 888-290-7900 Fax: 888-783-7271  
 Web: www.hydroworks.com

Hydroworks HG5 (60"Ø)	
PROJECT:	
LOCATION:	
REVISION DATE:	02/10/2011



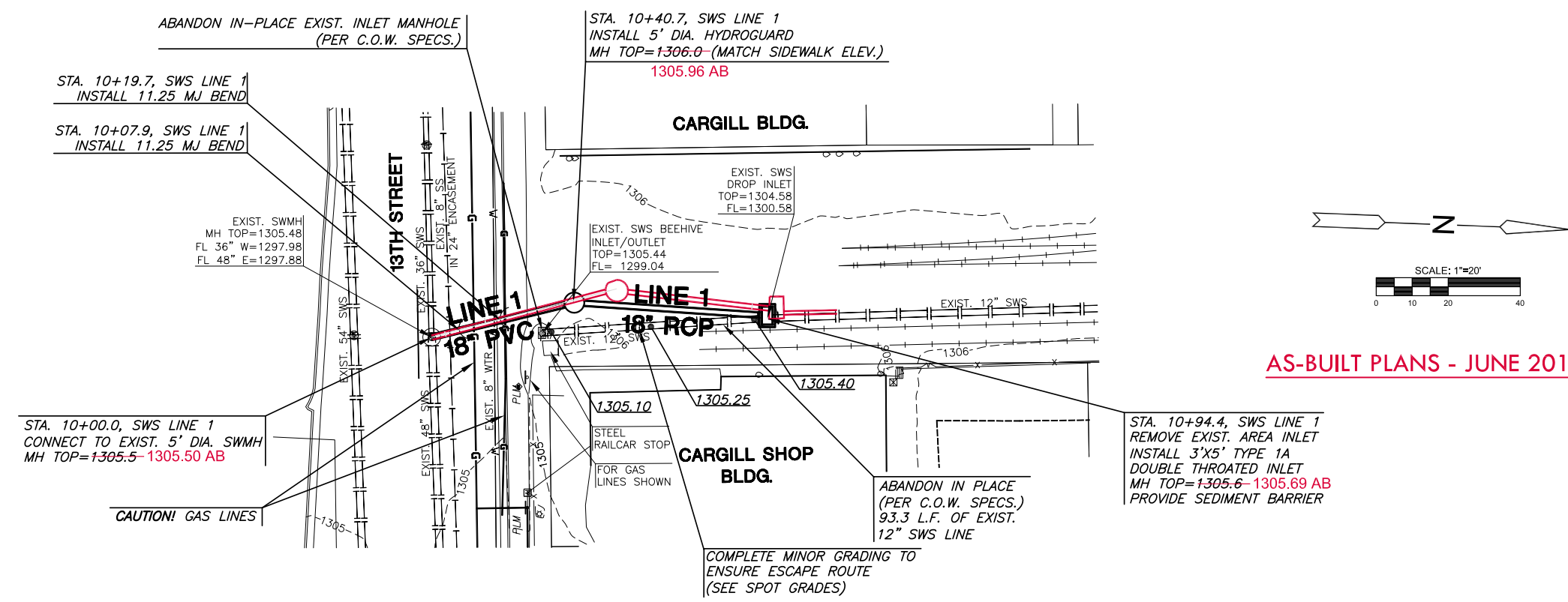
©2013  
 MKEC Engineering  
 All Rights Reserved  
 www.mkec.com  
 These drawings and their contents,  
 including, but not limited to, all concepts,  
 designs, & ideas are the exclusive  
 property of MKEC Engineering (MKEC),  
 and may not be used or reproduced in any  
 way without the express consent of MKEC.

**HYDROGUARD  
 DETAIL**

PROJECT NO.	208PPD	
DATE	NOV. 2013	
SCALE	NTS	
DESIGNED	DRAWN	CHECKED
KA	SLF	KA

#	----	##/##/##
NO.	REVISION	DATE

SHEET NO.



AS-BUILT PLANS - JUNE 2014

**CONSTRUCTION NOTES:**

1. GAS PIPELINE ELEVATIONS WERE VERIFIED BY POTHOLING. CONSTRUCTION SHALL PROCEED WITH CAUTION IN THIS AREA.
2. CONTRACTOR SHALL BE RESPONSIBLE FOR OBTAINING A STREET CUT PERMIT FROM THE CITY OF WICHITA.
3. TRAFFIC CONTROL PLAN SHALL BE PROVIDED BY THE CONTRACTOR PRIOR TO COMMENCEMENT OF WORK. TRAFFIC CONTROL SHALL MEET MUTCD STANDARDS.
4. HYDROGUARD MANHOLE TO BE INCORPORATED INTO EXISTING SIDEWALK. REMOVE AND REPLACE EXISTING SIDEWALK AS NEEDED.

**INLET/MANHOLE ABANDONMENT ADDITIONAL NOTE:**

1. MODIFY THE NORTH PART OF THE CURB SURROUNDING THE EXISTING MANHOLE STRUCTURE. THE NEW TOP OF CURB ELEVATION AT THIS POINT SHALL BE NO HIGHER THAN 1304.9.

**BACKFILL ADDITIONAL NOTE:**

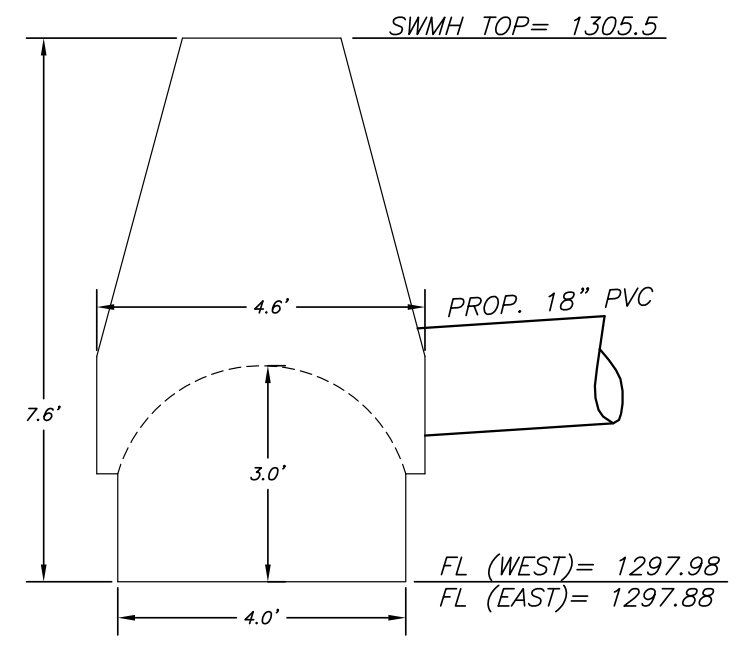
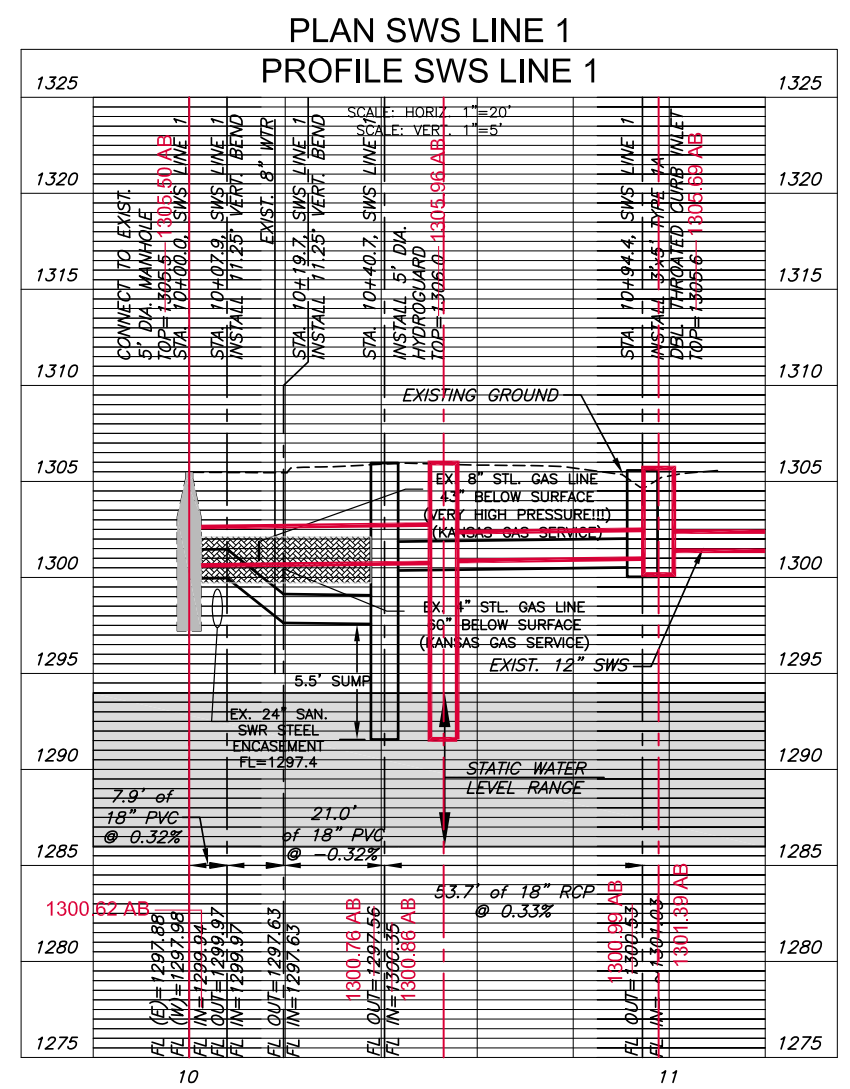
**REQUIREMENTS UNDER COW STREET AND SIDEWALK:**

1. BACKFILL SHALL BE FLUSHED AND VIBRATED SAND TO WITHIN 3" OF THE BOTTOM OF THE 4" GAS LINE.
2. FROM 3" BELOW THE 4" GAS LINE TO 3" ABOVE THE 8" GAS LINE, THE BACKFILL SHALL BE HAND COMPACTED SOIL BACKFILL (95% COMPACTION). (PER MKEC VERIFICATION WITH KANSAS GAS SERVICE)
3. BACKFILL SHALL BE FLUSHED AND VIBRATED SAND FROM 3" ABOVE THE 8" GAS LINE TO THE FINISHED SUBGRADE ELEVATION.



**REQUIREMENT UNDER UNPAVED AREAS:**

1. BACKFILL SHALL COMPLY WITH THE CITY OF WICHITA STANDARD SPECIFICATIONS FOR THE INSTALLATION OF STORMWATE PIPE, INCLUDING THE IMPROVED BEDDING REQUIREMENT.



13TH STREET SWMH CONNECTION DETAIL

J:\PROJECTS\2013\1301010680\_CARGILL CRUSH PLANT DRAINAGE\5-CIVIL\CAD\SSWS\LINE 1.DWG

©2013 MKEC Engineering  
All Rights Reserved  
www.mkec.com  
These drawings and their contents, including, but not limited to, all concepts, designs, & ideas are the exclusive property of MKEC Engineering (MKEC), and may not be used or reproduced in any way without the express consent of MKEC.

**PLAN AND PROFILE**

PROJECT NO.	208PPD	
DATE	JAN. 2014	
SCALE	1"=20'	
DESIGNED	DRAWN	CHECKED
KA	SLF	KA

NO.	REVISION	DATE

