

5744-704CO (Cleanout)
(not found, possibly under small shed)
Construct Shallow Manhole where
cleanout exists - depth unknown

Replace Service Connection:
Abandon cleanout #705 and approx 30 lf of pipe,
connect to existing service line and run new
pipe to MH 5744-704

Replace Service Connection:
Abandon cleanout #706 and approx 20 lf of pipe,
connect to existing service line and run new
pipe to MH 5744-704

5744-705CO

3076

5744-706CO

Remove and replace 37 lf of Concrete Driveway

MH # 5744-699

261' ?

134' ?

RUTAN

MH # 5744-688

5744-703CO

5744-701CO (cleanout)
Construct Shallow Manhole
where the cleanout exists
Depth unknown - (see photo)

MH # 5744-700
Replace Manhole Frame & Cover
Rework Manhole Bench & Invert
Approx depth = 4.8 ft

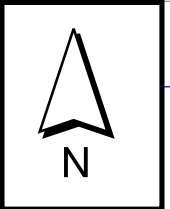
3140

5744-702CO

Remove 162 lf of 6" pipe and install 162 lf of
8" pipe from MH 5744-704 to MH 5744-699

Remove 243 lf of 6" pipe and install 243 lf of
8" pipe from MH 5744-701 to MH 5744-699

DUNHAM



5-2

5744-704CO

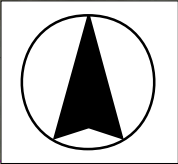
RUTAN

5744-699

5744-700

DUNHAM

Aerial View



Television Inspection Master Report

6/24/2003
11:23:22AM
C01B

US Manhole: 5744-700
DS Manhole: 5744-699

3400 E DUNHAM ST
3108 S RUTAN ST

Date Insp: 8/1/2000

Basin:

Dir Televised: Upstream To Downstream

Pipe Information

Shape: Round Length Status: Project No.: I-059
Dia/Ht Width: 6 0 Material: VCP Index:
Length: 175.0 Slope: 1.771 Surface:
Pipe Sec Length: 178.0 Comment:

Inspection Information

Crew: 694 Percent Full: 5 Tape ID: V-2495
Weather: Sunny Purpose: TV Existing Line Counter Start: 58.36
Surface Cond: Trees, Fences, Buildings Flow: Normal Flow Counter Stop:
Dyed Test: No

Obs. #	VTR Counter Comment	Dist	Location	Description	Rating	Obsrvd (gpm)	Est. (gpm)	Ratings Struct	Clean	Remain (gpm)
1		0.0	US Manhole 5744-700							
2		5.0	Joint	Roots	2		0.004	2	4	0.004
3		7.0	Joint	Roots	2		0.004	2	4	0.004
4		10.0	Joint	Roots	1		0.002	1	1	0.002
5		12.0	Joint	Roots	2					0.000
6		12.0	Quad 2 / L-Rt	Crack-Radial	4					
7		14.0	Joint	Roots	1		0.002	1	1	0.002
8		17.0	Joint	Roots	2		0.004	2	4	0.004
9		19.0	Joint	Roots	1		0.002	1	1	0.002
10		22.0	Joint	Roots	1		0.002	1	1	0.002
11		23.0	West	Wye Service	1		0.000	0	0	0.000
12		23.0	Wye Service	Roots	2		0.004	2	4	0.004
13		29.0	Crown	Crack-Radial	2		0.002	2	0	0.002
14		36.0	Joint	Roots	1		0.002	1	1	0.002
15		39.0	East	Wye Service	1		0.000	0	0	0.000
16		39.0	Wye Service	Roots	3		0.008	5	8	0.008
17		56.0	Invert	Crack-Radial	2		0.002	2	0	0.002
18		58.0	Invert	Sag						0.000
19	10% FLOW.	60.0	Crown	Crack-Radial	3					
20		61.0	Crown	Crack-Horizontal	4					
21		63.0	Crown	Crack-Radial	4					
22		64.0	West	Wye Service	1		0.000	0	0	0.000
23		64.0	Wye Service	Roots	3		0.008	5	8	0.008
24		65.0	Invert	Sag / 10% FLOW.						
25		66.0	Crown	Crack-Horizontal	4					
26		66.0	Invert	Sag / OUT OF SAG.						
27		68.0	Crown	Crack-Horizontal	4					
28		70.0	Crown	Crack-Horizontal	4		0.008	10	0	0.008
29		73.0	Quad 4 / U-Lt	Crack-Radial	2		0.002	2	0	0.002
30		75.0	Crown	Crack-Horizontal	3					0.000
31		76.0	East	Wye Service	1		0.000	0	0	0.000
32		80.0	Joint	Roots	1		0.002	1	1	0.002
33		80.0	Invert	Crack-Horizontal	3					0.000
34		83.0	Crown	Crack-Horizontal	3		0.004	5	0	0.004
35		85.0	Crown	Crack-Horizontal	3					0.000
36		87.0	Crown	Crack-Radial	2		0.002	2	0	0.002
37		95.0	West	Wye Service	1		0.000	0	0	0.000

5-3

Television Inspection Master Report

6/24/2003
11:23:22AM

US Manhole:	5744-700	3400 E DUNHAM ST	Date Insp:	8/1/2000	Basin:	C01B		
DS Manhole:	5744-699	3108 S RUTAN ST						
38	95.0	Wye Service	Roots	2	0.004	2	4	0.004
39	120.0	Crown	Crack-Radial	1	0.001	1	0	0.001
40	121.0	Joint	Offset	3	0.010	20	0	0.010
41	137.0	Crown	Crack-Radial	1	0.001	1	0	0.001
42	139.0	Quad 1 / U-Rt	Crack-Radial	1				0.000
43	143.0	West	Wye Service	1	0.000	0	0	0.000
44	147.0	Quad 3 / L-Lt	Crack-Radial	2	0.002	2	0	0.002
45	161.0	Joint	Roots	1	0.002	1	1	0.002
46	166.0	Joint	Roots	1	0.002	1	1	0.002
47	172.0	Joint	Roots	1				0.000
48	174.0	Joint	Roots	2	0.004	2	4	0.004
49	176.0	Invert	Crack-Radial	3				0.000
50	177.0	Joint	Offset	3	0.010	20	0	0.010
51	179.0	DS Manhole 5744-699						

5-4

Television Inspection Master Report

6/24/2003
11:23:22AM

US Manhole: 5744-704CO

Date Insp: 2/19/2003

Basin: C01B

DS Manhole: 5744-699 3108 S RUTAN ST

Dir Televised: Downstream To Upstream

Pipe Information

Shape: Round	Length Status:	Project No.: I-059
Dia/Ht Width: 6	Material: VCP	Index:
Length: 162.0	Slope: 1.100	Surface:
Pipe Sec Length: Comment:		

Inspection Information

Crew: 694	Percent Full: 15	Tape ID: V-3811
Weather: Sunny	Purpose: TV Existing Line	Counter Start: 19;18
Surface Cond: Fences	Flow: Normal Flow	Counter Stop:
Dyed Test: Yes		

Obs. #	VTR Counter Comment	Dist	Location	Description	Rating	Obsrvd (gpm)	Est. (gpm)	Ratings Struct	Clean	Remain (gpm)
1		0.0	DS Manhole (tv against flow)							
2		2.0	Invert	Roots	3		0.008	5	8	0.008
3		2.0	Crown	Crack-Radial	3		0.004	5	0	0.004
4		9.0	Camera Lens Submerge	Sag						0.000
5		13.0	Camera Lens Emerged	Sag						
6		17.0	Camera Lens Submerge	Sag						
7		20.0	Camera Lens Emerged	Sag						
8		49.0	West	Wye Service	1		0.000	0	0	0.000
9	3108 S. RUTAN	91.0	Joint	Offset	3		0.010	20	0	0.010
10		95.0	East	Wye Service	1		0.000	0	0	0.000
GARAGE OVER THIS LINE. THIS CONNECTION IS PROBABLY SEALED.										
11		121.0	Invert	Broken Pipe	4		0.030	78	0	0.030
12		151.0	Invert	Sag						0.000
35% FLOW										
13		154.0	Camera Lens Submerge	Sag						
14		160.0	Camera Lens Emerged	Sag						
15		162.0	West Wye	Line to C.O. 5744-705	WE HAVE DYE TESTED THIS CONNECTION.					
16		162.0	East Wye	Line to C.O. 5744-706						
17		164.0	Joint	Roots	3		0.008	5	8	0.008
18		165.0	US Cleanout 5744-704CO							0.000

Believe the cleanout may be located under a small shed (shed in poor condition)

5-5

Television Inspection Master Report

6/24/2003
11:23:22AM

US Manhole: 5744-701CO

DS Manhole: 5744-700

3400 E DUNHAM ST

Date Insp: 2/21/2003

Basin: C01B

Dir Televised: Downstream To Upstream

Pipe Information

Shape: Round

Dia/Ht Width: 6 0

Length: 65.0

Pipe Sec Length: Comment:

Length Status:

Material: VCP

Slope: 2.769

Project No.: I-060

Index:

Surface:

Inspection Information

Crew: 694

Weather: Sunny

Surface Cond: Trees & Fences

Dyed Test: No

Percent Full: 15

Purpose: TV Existing Line

Flow: Normal Flow

Tape ID: V-3819

Counter Start: 35;17

Counter Stop:

Obs. #	VTR Counter Comment	Dist	Location	Description	Rating	Obsrvd (gpm)	Est. (gpm)	Ratings		
								Struct	Clean	Remain (gpm)
1		0.0	DS Manhole 5744-700 / tv against the flow							
2		3.0	Joint	Roots	5		0.030	18	100	0.030

WE CAN TELEVISION NO FURTHER DUE TO THE ROOTS IN THIS LINE.
THIS NEEDS TO BE KNIFED IN ORDER FOR US
TO CONTINUE.

INCOMPLETE TELEVISIONING

Not possible to reverse the setup due to # 701 being a cleanout.

Not possible to televise from 703CO to 701CO.

Not possible to televise from 702CO to 701CO.

5-6