

**3-1**

**Remove and replace 151 lf of 8" pipe from MH 5744-215 to MH 5744-213**

MH # 5744-213  
Replace Manhole Frame & Cover  
Rework Manhole Bench & Invert  
Approx depth = 10.9 ft

MH # 5744-178  
Replace Manhole Frame & Cover  
Rework Manhole Bench & Invert  
Approx depth = 9.5 ft

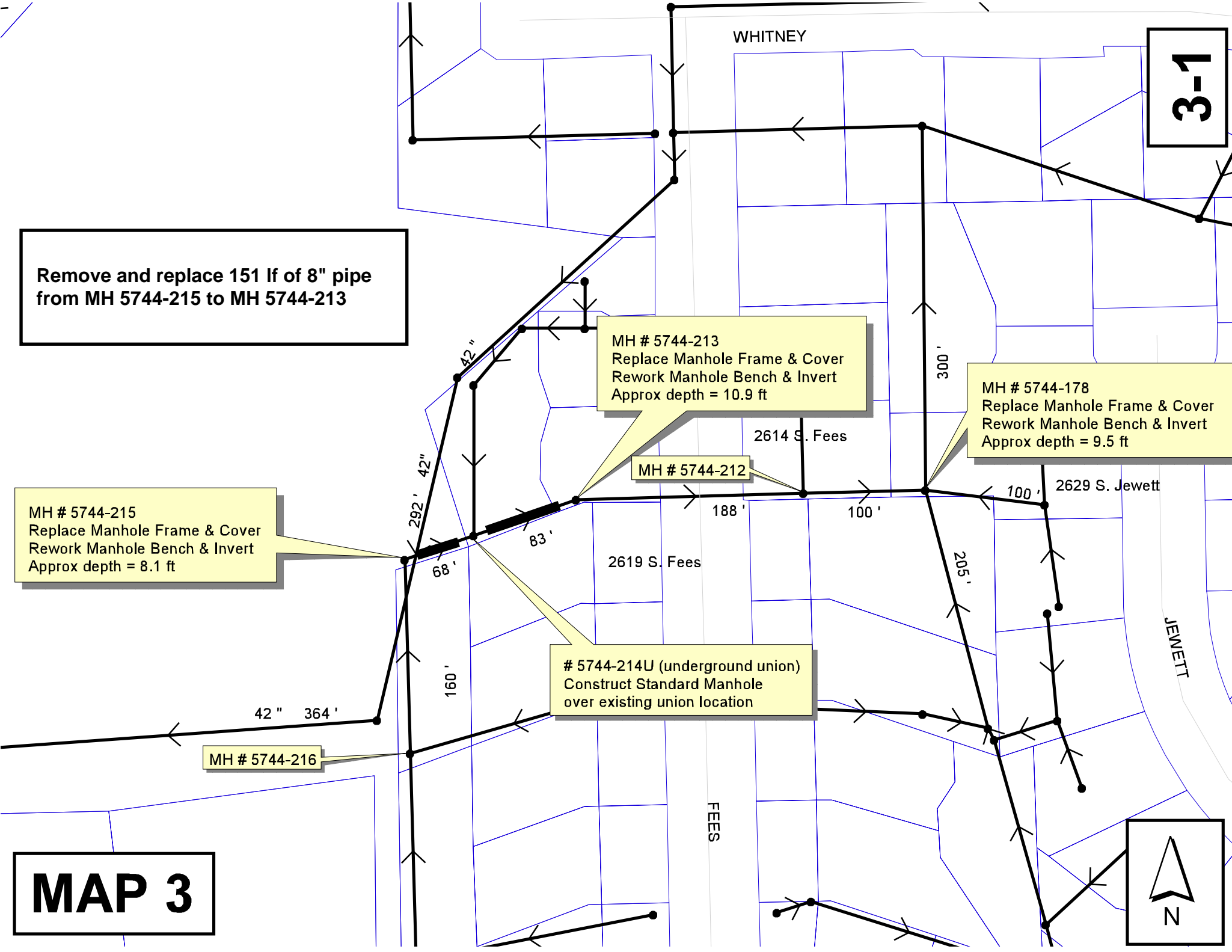
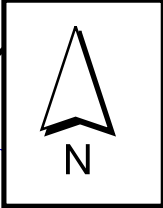
MH # 5744-215  
Replace Manhole Frame & Cover  
Rework Manhole Bench & Invert  
Approx depth = 8.1 ft

MH # 5744-212

# 5744-214U (underground union)  
Construct Standard Manhole  
over existing union location

MH # 5744-216

**MAP 3**



3-2

FEEES

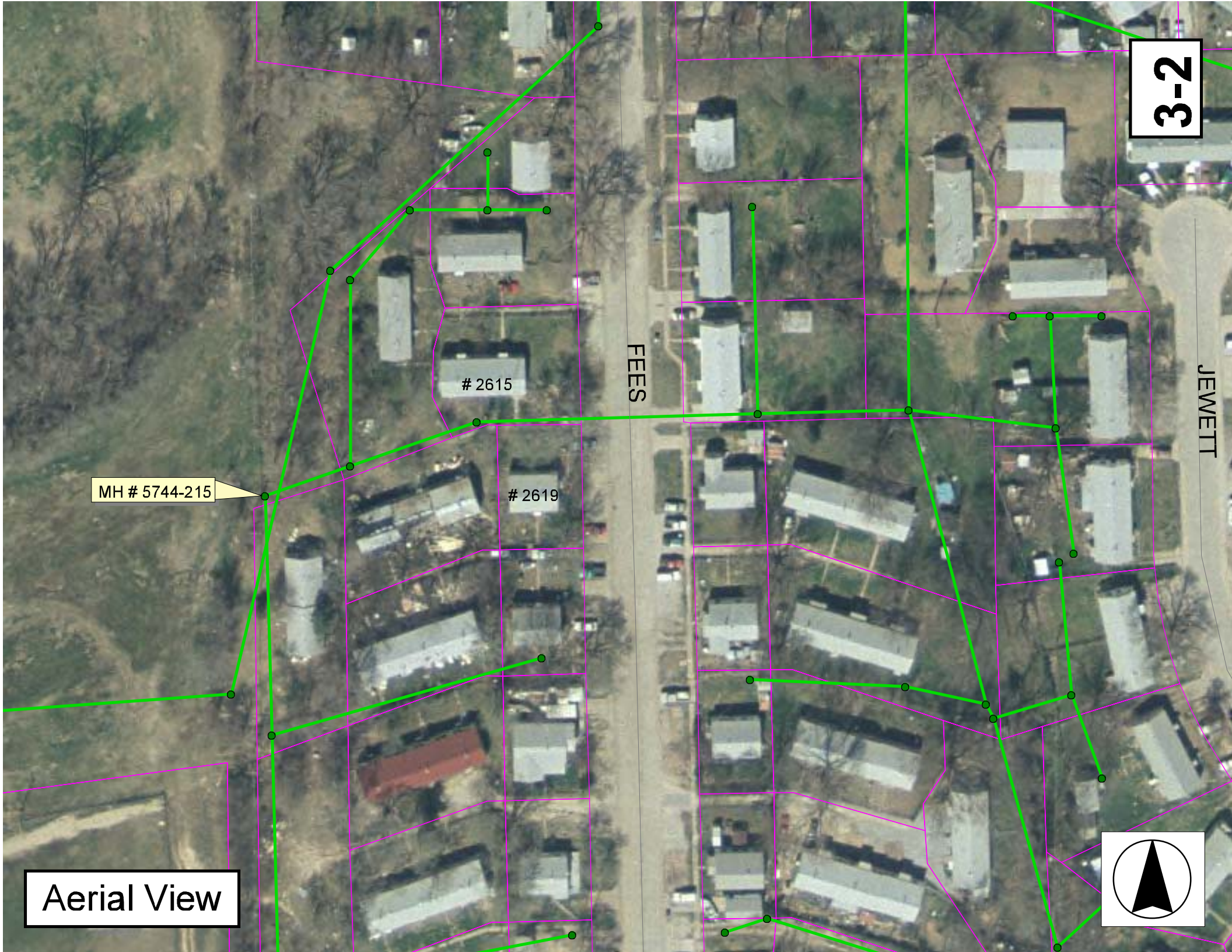
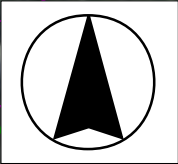
JEWETT

# 2615

# 2619

MH # 5744-215

Aerial View



# Television Inspection Master Report

9/30/2003  
10:17:33AM  
C01A

US Manhole: 5744-215 2629 S FEES ST  
DS Manhole: 5744-214U (underground union)

Date Insp: 7/25/2003

Basin:

Dir Televised: Upstream To Downstream

## Pipe Information

Shape:	Round	Length Status:	Project No.:	I-078
Dia/Ht Width:	8 0	Material:	VCP	Index:
Length:		Slope:	0.333	Surface:
Pipe Sec Length:	Comment:			

## Inspection Information

Crew:	694	Percent Full:	15	Tape ID:	V-3995
Weather:	Sunny	Purpose:	TV Existing Line	Counter Start:	2;15.46
Surface Cond:	Trees & Fences	Flow:	Normal Flow	Counter Stop:	
Dyed Test:	No				

Obs. #	VTR Counter Comment	Dist	Location	Description	Rating	Obsrvd (gpm)	Est. (gpm)	Ratings			
								Struct	Clean	Remain (gpm)	
1		0.0	US Manhole / 5744-215								
2		4.0	Quad 1 / U-Rt	Grease	4		0.000	0	10	0.000	
5		6.0	Crown	Crack-Radial	3		0.004	5	0	0.004	
3		8.0	Invert	Grease	5		0.000	0	25	0.000	
4		9.0	Invert	Debris	5		0.000	0	75	0.000	
			WE CAN TELEVISION NO FURTHER DUE TO THE GREASE.								
6		9.0	Invert	Sag							
			WE ARE USING A CLEANER TO PULL DOWN WATER								
7		9.0	Crown	Crack-Horizontal	3		0.004	5	0	0.004	
8		10.0	Joint	Broken Pipe	5		0.060	100	0	0.060	
			WE CAN TELEVISION NO FURTHER DUE TO CAVITY IN THE LINE. WE WILL REVERSE OUR SET-UP.								

Looks like the offset may be located where the 42" sanitary sewer crosses this line

**3-3**

# Television Inspection Master Report

9/30/2003  
10:17:33AM  
C01A

US Manhole: 5744-214U (underground union)  
DS Manhole: 5744-213 2615 S FEES ST

Date Insp: 7/25/2003

Basin:

Dir Televised: Downstream To Upstream

## Pipe Information

Shape:	Round	Length Status:	Project No.:	I-078
Dia/Ht Width:	8 0	Material:	VCP	Index:
Length:	80.0	Slope:	0.250	Surface:
Pipe Sec Length:	Comment:			

## Inspection Information

Crew:	694	Percent Full:	15	Tape ID:	V-3995
Weather:	Sunny	Purpose:	TV Existing Line	Counter Start:	2;23.15
Surface Cond:	Trees & Fences	Flow:	Normal Flow	Counter Stop:	
Dyed Test:	No				

Obs. #	VTR Counter Comment	Dist	Location	Description	Rating	Obsrvd (gpm)	Est. (gpm)	Ratings Struct	Clean	Remain (gpm)	
1		0.0	DS Manhole / 5744-213 /	tv against the flow							
2		2.0	Crown	Crack-Horizontal	3		0.004	5	0	0.004	
3		7.0	Invert	Sag / 35% flow						0.000	
4		9.0	North	Wye Service	5		0.000	400	0	0.000	
	2615 S. FEES										
5		12.0	Crown	Crack-Horizontal	3		0.004	5	0	0.004	
6		15.0	Crown	Crack-Radial	3		0.004	5	0	0.004	
7		15.0	Invert	Out of Sag						0.000	
8		29.0	South	Wye Service	1		0.000	0	0	0.000	
	2621 S. FEES.										
9		33.0	Quad 1 / U-Rt	Crack-Horizontal	3		0.004	5	0	0.004	
10		36.0	Quad 1 / U-Rt	Crack-Radial	2		0.002	2	0	0.002	
11		45.0	Crown	Crack-Horizontal	3		0.004	5	0	0.004	
12		52.0	Crown	Crack-Radial	3		0.004	5	0	0.004	
13		56.0	South	Wye Service	1		0.000	0	0	0.000	
	2623 S.. FEES.										
14		63.0	Joint	Offset	3		0.010	20	0	0.010	
15		66.0	Crown	Crack-Radial	3		0.004	5	0	0.004	
16		69.0	Crown	Crack-Radial	3		0.004	5	0	0.004	
17		72.0	Quad 2 / L-Rt	Crack-Horizontal	3		0.004	5	0	0.004	
18		72.0	Invert	Sag / 35% flow						0.000	
19		75.0	Invert	Sag / 40% flow							
20		77.0	Camera Lens Submerge	Sag							
	WE ARE GOING TO USE THE CLEANER TO PULL DOWN THE WATER.										
21		80.0	Joint	Records indicated that the underground union should be here at 80 feet, but it is not							
22		83.0	North	Wye Service	1		0.000	0	0	0.000	
	2611 S FEES? <b>OR IS THIS THE UNDERGROUND UNION?</b>										
23		84.0	South	Wye Service	1		0.000	0	0	0.000	
	2623 S. FEES										
24		87.0	South	Wye Service	1		0.000	0	0	0.000	
	2625 S. FEES										
25		94.0	Quad 1 / U-Rt	Crack-Radial	3		0.004	5	0	0.004	
26		106.0	Quad 2 / L-Rt	Crack-Radial	3		0.004	5	0	0.004	
27		135.0	Joint	Offset	3		0.010	20	0	0.010	
28		141.0	Invert	Sag						0.000	
	WE ARE UNABLE TO TELEVISION ANY FURTHER DUE TO THE OFFSET AND SAG.										

3-4