

INDEX OF SHEETS

1	Title Sheet
2	General Notes
3-4	Typical Sections
5-13	Plan Sheets
14	Sidestreet Retaining Wall
15	Entrance Drive Reconstruction Plan
16-18	Side Road Plans
19-20	Paving Bubble Maps
21	Sidewalk Points Table
22-25	Pavement Details
26	Retaining Wall Details
27-33	RCB Plan and Details
34-47	Storm Sewer Plan & Profiles
48-49	Storm Sewer Schedules
50-51	Storm Sewer Bubble Map
52-59C	Storm Sewer Details
60-68	Landscape Plans & Details
69-74	Erosion Control Plan & Details
75	Summary of Quantities
76-78	Permanent Signing and Pavement Marking
79-84	Construction Sequencing
85	Detour Plan
86-90	Traffic Control Details
91-92	Drainage Area Maps
93-115	Cross Sections

PLAN AND PROFILE OF PROPOSED

City Project # 472-84308

OCA # 706938

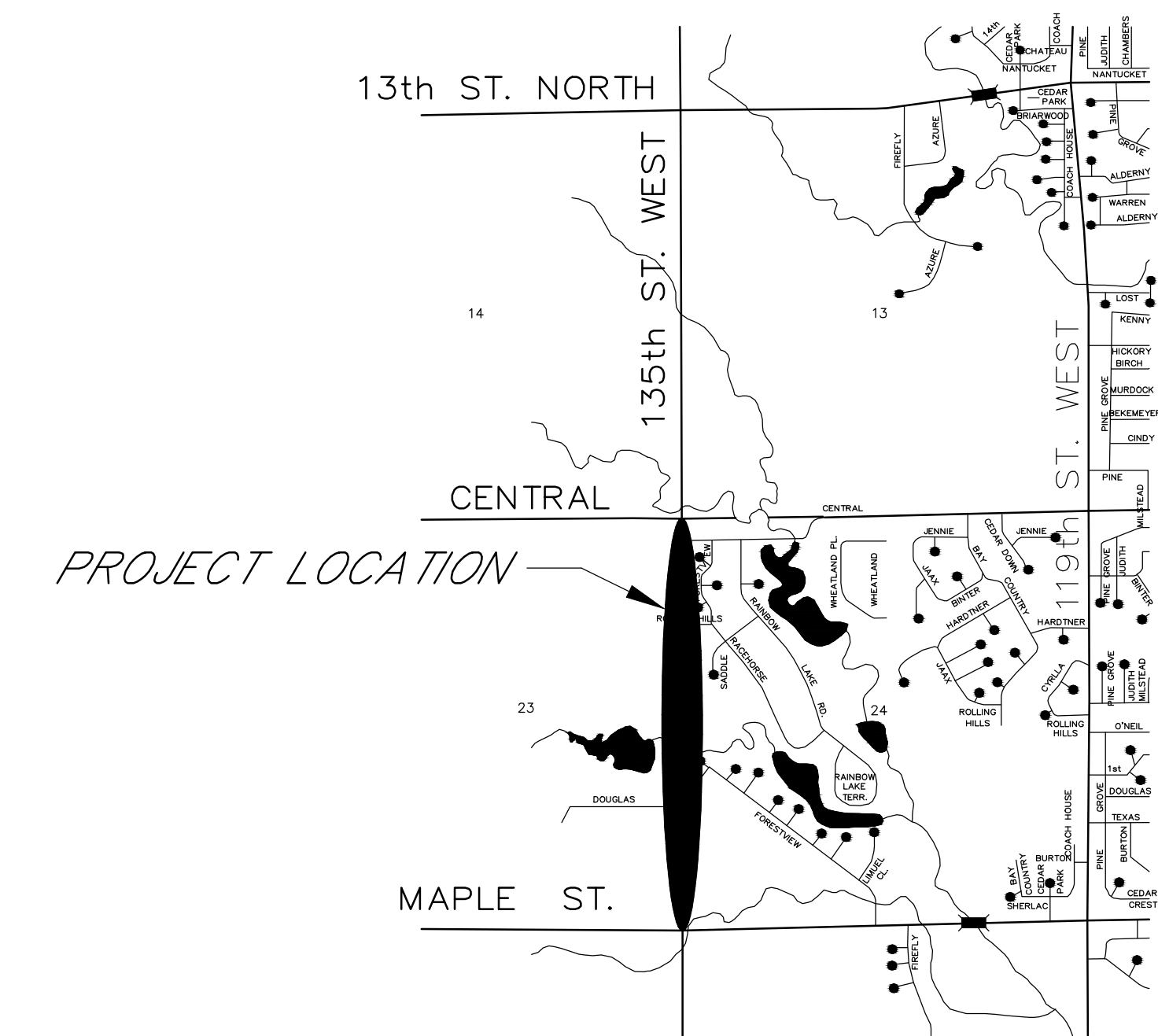
135th STREET WEST, MAPLE TO CENTRAL

WICHITA, SEDGWICK COUNTY, KS.

POPULATION: 374,445

2013

GRADING
SURFACING
PAVEMENT MARKING



LOCATION MAP

CONVENTIONAL SIGNS

COUNTY LINE.....	-----	CENTER LINE OF PROJECT.....	
CITY LIMITS.....	-----	CULVERTS.....	
STATE OR NATIONAL LINE.....	-----	DROP INLET & STORM SEWER.....	
TOWNSHIP, SECTION or GRANT LINE.....	-----	ACCESS CONTROL.....	
PROPERTY LINE.....	-----	POWER POLE (Local Service).....	
HIGHWAY FENCE.....	-----	POWER POLE (Transmission Service).....	
EXISTING FENCE.....	-----	TELEPHONE POLE.....	
GUARD FENCE.....	-----	HEDGE.....	
CONSTRUCTION LIMITS.....	-----	TREES.....	
RIGHT OF WAY LINE.....	-----		
TRAVELED WAY.....	-----		
RAILROADS.....	-----		
EASEMENT LINE.....	-----		

DESIGN DESIGNATION

AADT (2006)	3350
AADT (2030)	8000
DHV	10.0%
V	40 mph
C of A	None
Clear Zone	6ft.

GROSS LENGTH OF PROJECT	0.918 mi.
EXCEPTIONS	0.000 mi.
NET LENGTH OF PROJECT	0.918 mi.
NET LENGTH OF BRIDGES	0.000 mi.
NET LENGTH OF ROAD	0.918 mi.



BENCHMARKS/CONTROL (NAVD 88)	
BM# 6	Square Cut S. side SBC concrete pad N. side Douglas St. N 4135.9070 E 4939.2280 Elev. 1343.85
BM# 7	Square Cut East end of median island at Texas & 135th St. N 3775.3030 E 4816.4270 Elev. 1348.64
BM# 8	Square Cut Top S. curb West end Burton St. & 135th St. N 3218.7710 E 4931.5890 Elev. 1342.25
BM# 9	Square Cut top West curb S. side of curb inlet S. end 135th St., North of Maple St. N 2847.2610 E 4832.7760 Elev. 1339.35
BM#10	C.O.W Disk in SE end hubguard, 700' E. of Rainbow Lake Rd. N 7623.4790 E 6316.9080 Elev. 1344.39
NE Cor. Sec. 23, T27S, R2W	S 1/4 Cor. Sec. 24, T27S, R2W
Fd. Sedgwick Co. Aluminum Cap N 7898.3630 E 4867.8090	Fd. 1/2" Iron Pipe in Timble N 2670.0160 E 7520.0930
N 1/4 Cor. Sec. 24, T27S, R2W	E 1/4 Cor. Sec. 23, T27S, R2W
Fd. 1/2" Iron Pipe N 7935.9540 E 7491.3820	Fd. 1/2" Iron Pipe N 5254.4610 E 4873.4460
S 1/4 Cor. Sec. 23, T27S, R2W	
Fd. 1/2" Iron Pipe in Timble N 2615.1430 E 4881.6700	

APPROVED - DATE

GARY JANZEN, P.E.
CITY ENGINEER
PROJECT NO. 472 84308

STORMWATER COMPLIANCE

TOTAL DISTURBED AREA	• 7.7 ACRES
PRE-DEVELOPED IMPERVIOUS AREA	• 3.3 ACRES
PRE-DEVELOPED PERVIOUS AREA	• 4.4 ACRES
POST-REDEVELOPMENT IMPERVIOUS AREA	• 6.5 ACRES
POST-REDEVELOPMENT PERVIOUS AREA	• 1.2 ACRES

WATER QUALITY ACHIEVED BY HYDROGUARD SEPARATOR MANUFACTURED BY HYDROWORKS, INC. DEVELOPMENT COMPLIES WITH SECTION 16.32 OF CITY CODE.

CITY OF WICHITA			
TITLE SHEET			
		8615 W. Frazier Lane, Suite 2 Wichita, KS 67212 Phone: 316-722-4472	
DESIGNED ABS	DRAWN AL/ES	SCALE No Scale	SHEET NO. 1
CHECKED ABS/CDM	DATE 06/14		