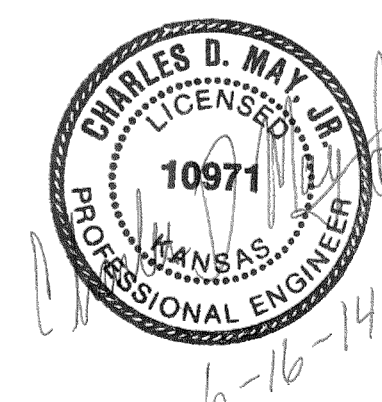
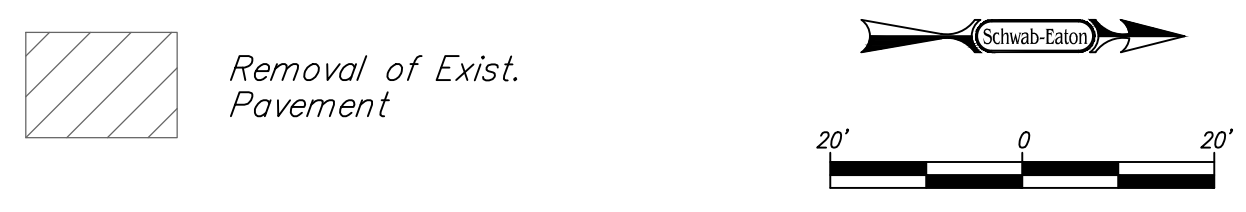
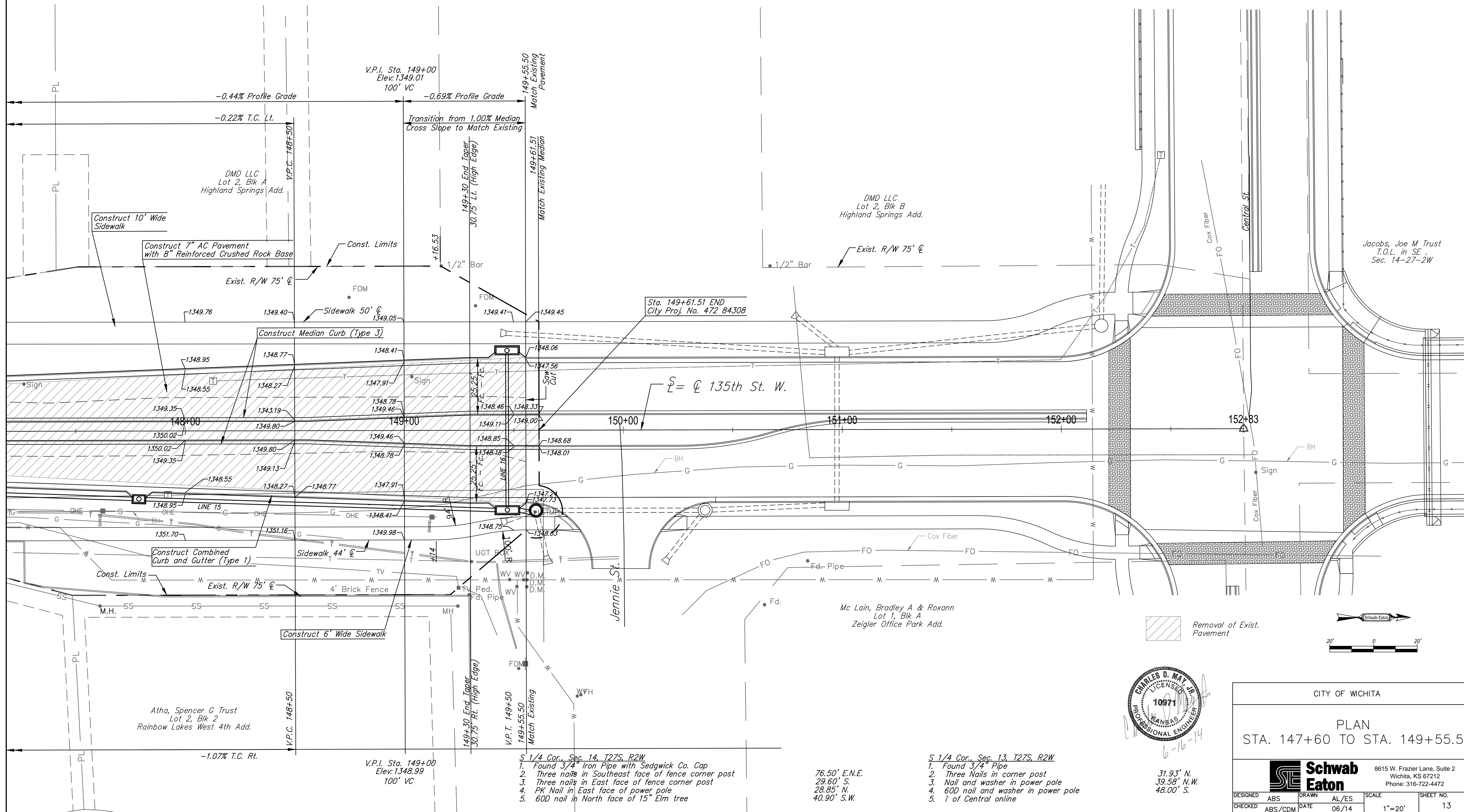


SW Cor., Sec. 13, T27S, R2W = P.O.T. Sta. 152+83.24, ± 135th St

1. Found Rebar with Sedgwick Co. Aluminum Cap
2. Three nails in power pole
3. "X" on Hubguard RCB
4. "X" on Hubguard RCB
5. Three Nails in fence post
6. Mag Nail and washer in power pole

48.40' N.E.  
149.90' N.N.E.  
149.90' N.N.W.  
21.85' E  
74.20' N.W.



CITY OF WICHITA  
PLAN  
STA. 147+60 TO STA. 149+55.5

- S 1/4 Cor., Sec. 14, T27S, R2W
1. Found 3/4" Iron Pipe with Sedgwick Co. Cap
  2. Three nails in Southeast face of fence corner post
  3. Three nails in East face of fence corner post
  4. PK Nail in East face of power pole
  5. 60D nail in North face of 15" Elm tree

76.50' E.N.E.  
29.60' S.  
28.85' N.  
40.90' S.W.

- S 1/4 Cor., Sec. 13, T27S, R2W
1. Found 3/4" Pipe
  2. Three Nails in corner post
  3. Nail and washer in power pole
  4. 60D nail and washer in power pole
  5. i of Central online

31.93' N.  
39.58' N.W.  
48.00' S.

DESIGNED	ABS	DRAWN	AL/ES	SCALE	SHEET NO.
CHECKED	ABS/CDM	DATE	06/14	1"=20'	13

**Schwab Eaton**  
8615 W. Frazier Lane, Suite 2  
Wichita, KS 67212  
Phone: 316-722-4472