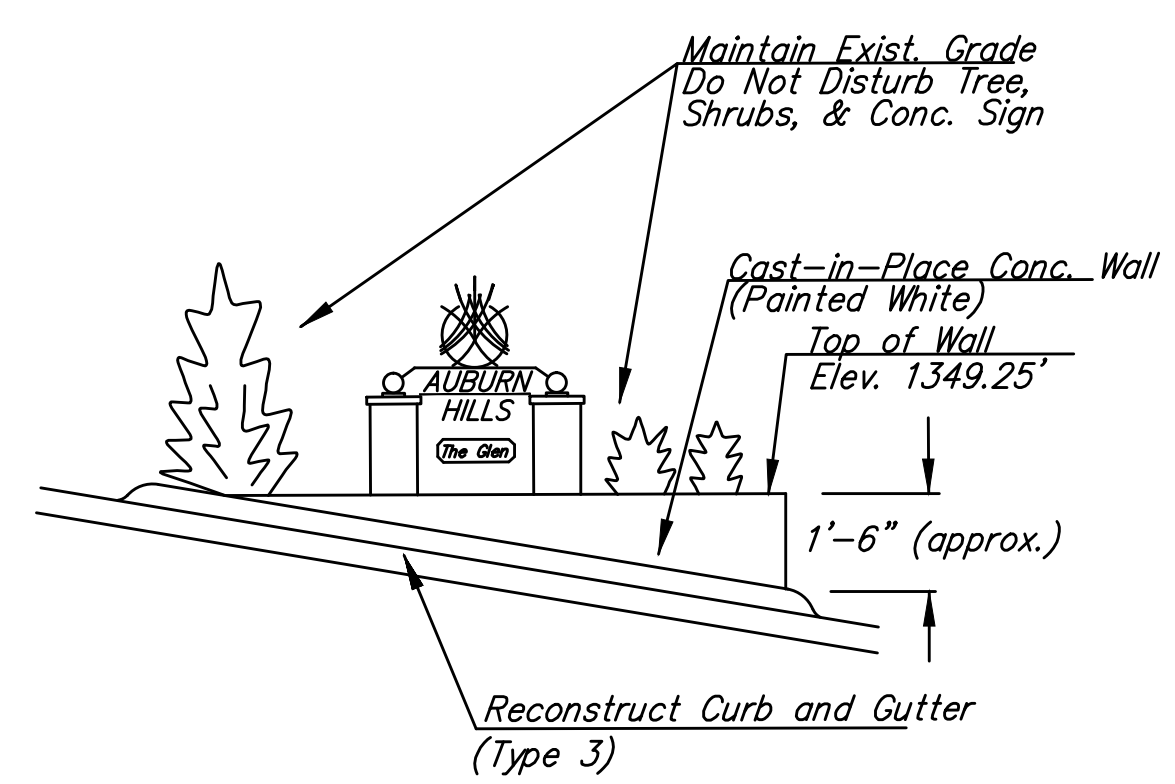
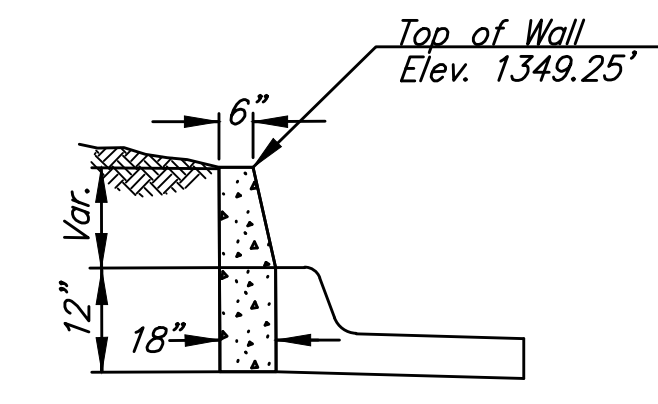


PLAN



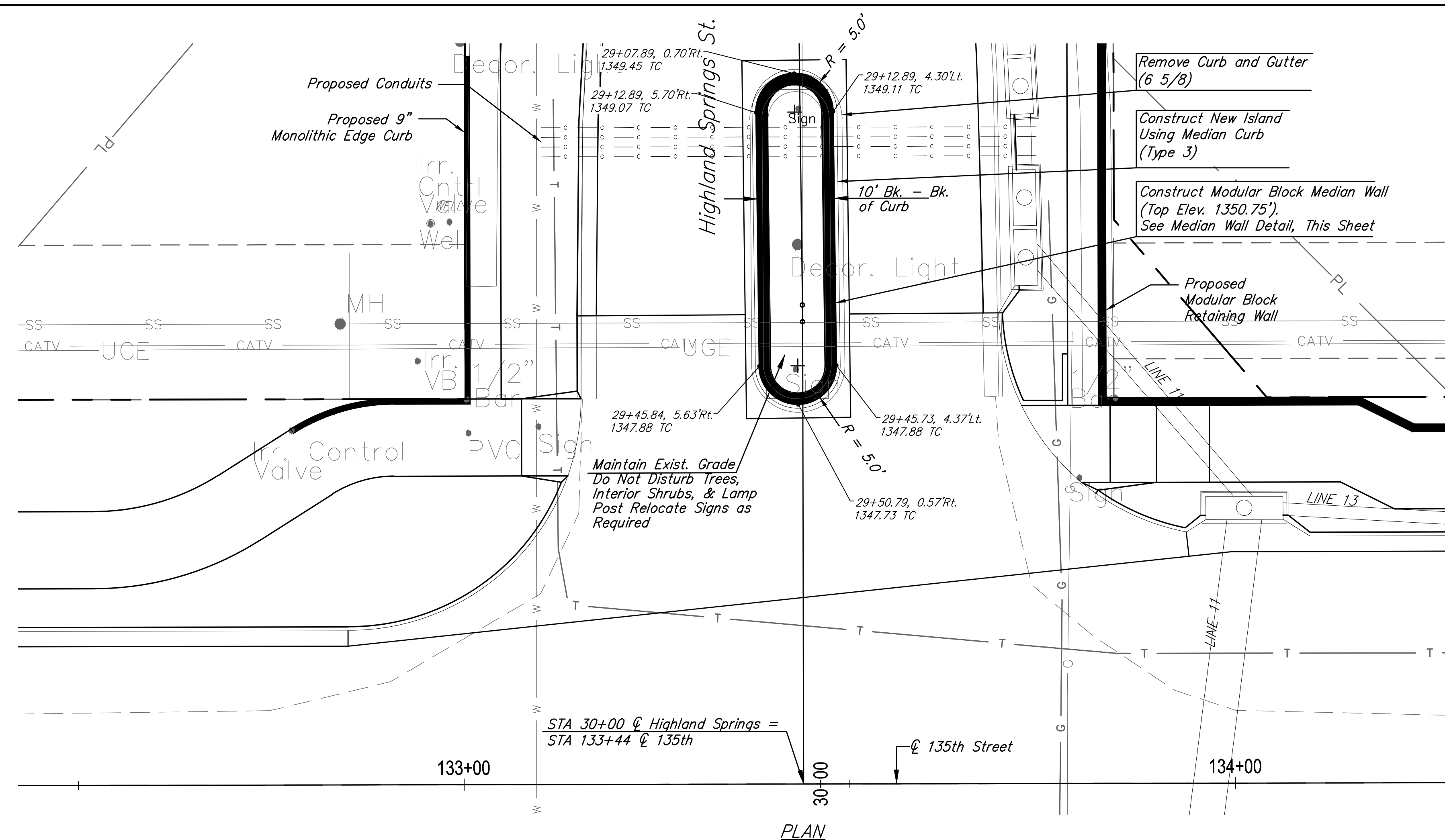
SECTION



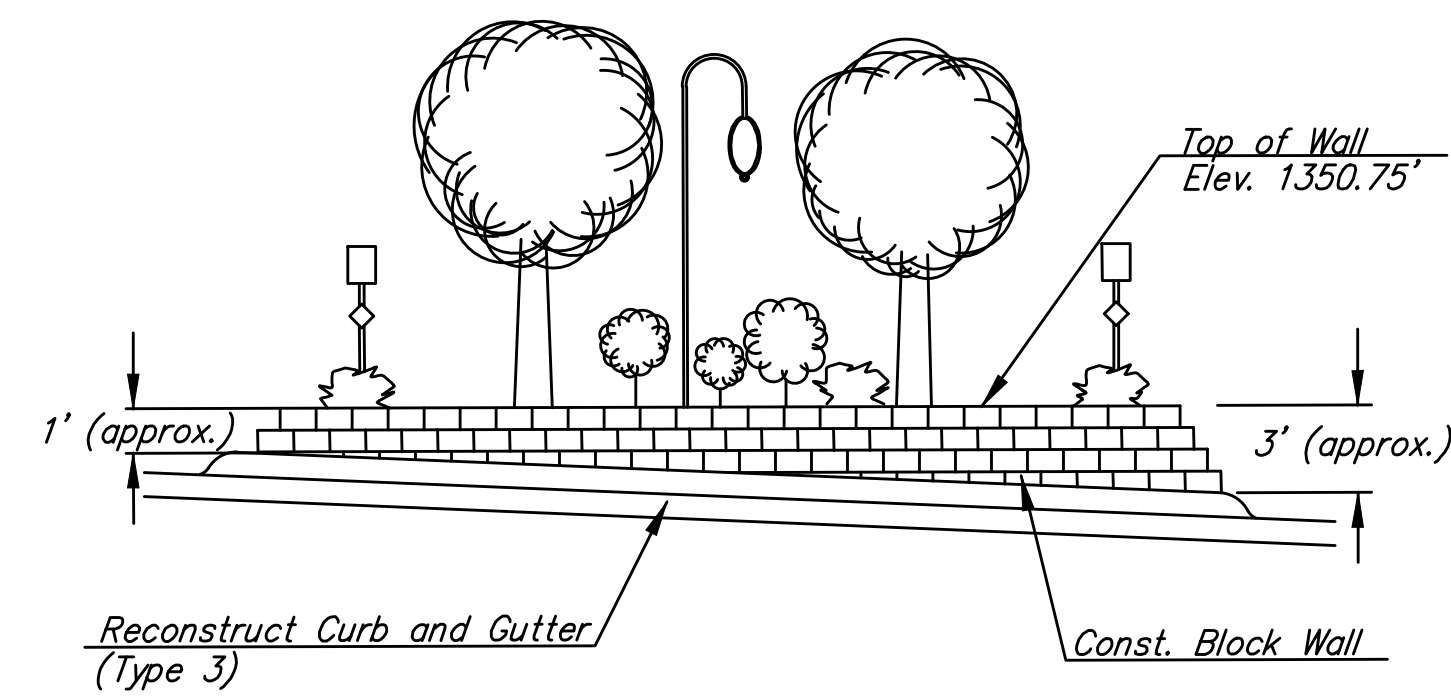
MEDIAN WALL DETAIL

Note: The Contractor Shall Paint the Top and Front of the Wall Using Sherwin Williams Loxon Acrylic Masonry Primer and Sherlastic Elastomeric Coating or Approved Equal. The Paint Color Shall Match the Existing Entry Sign.

TEXAS ST.
Sta. 111+60 Lt.

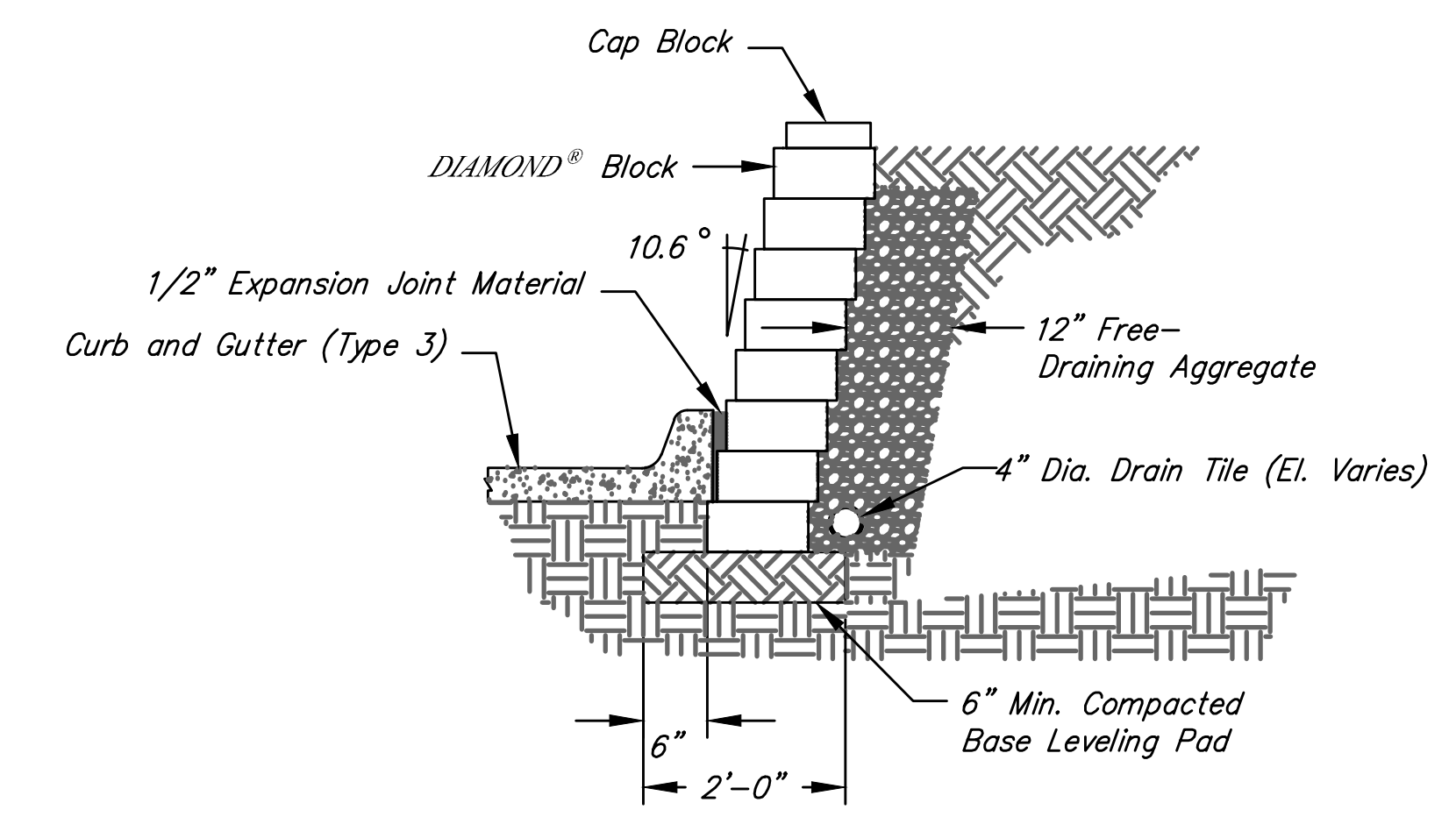


PLAN



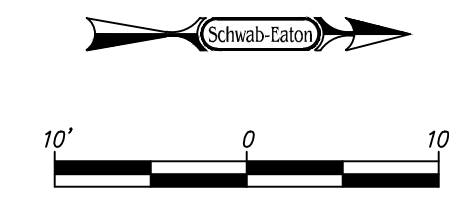
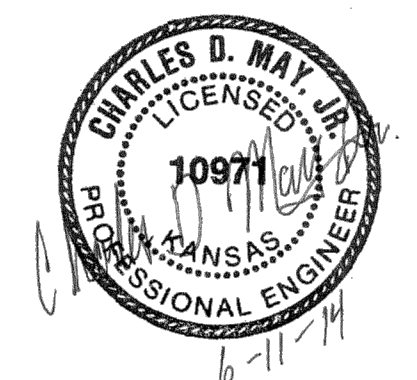
SECTION

Notes:
1. Median Wall Shall Be Constructed Using Pavestone Anchor Diamond (Straight Face) Blocks (Adobe Blend) or Approved Equal.
2. Contractor to Submit Shop Drawings for Approval Prior to Installation.
3. Contractor to Coordinate with Highland Springs Home Owners Association Prior to Construction for Final Location of 4-4\"/>



MEDIAN WALL DETAIL

HIGHLAND SPRINGS
Sta. 133+43 Lt.



CITY OF WICHITA			
SIDE STREET RETAINING WALL DETAILS			
		8615 W. Frazier Lane, Suite 2 Wichita, KS 67212 Phone: 316-722-4472	
DESIGNED ABS	DRAWN AL/ES	SCALE No Scale	SHEET NO. 14
CHECKED ABS/CDM	DATE 06/14		