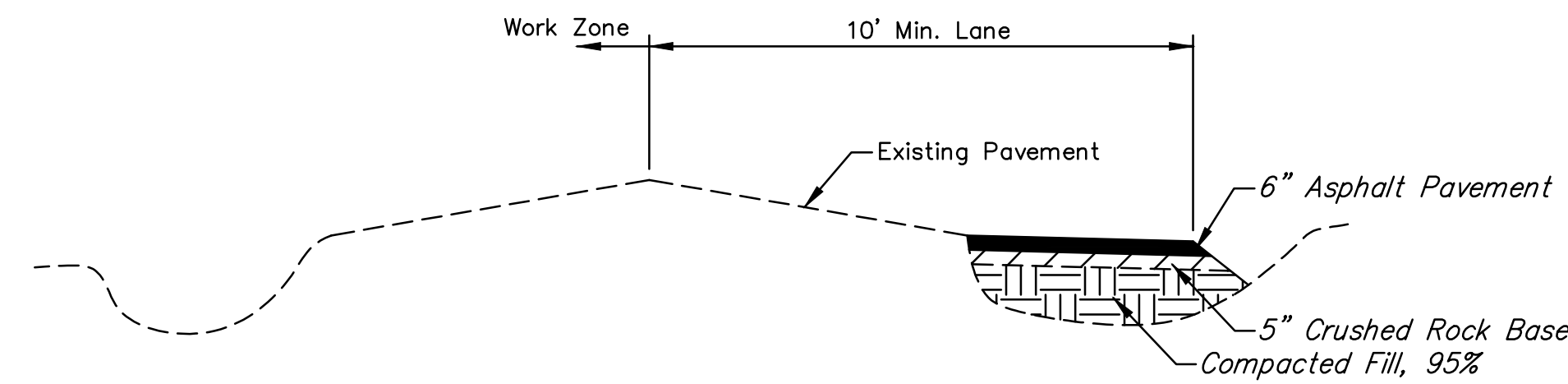


TYPICAL TRAFFIC CONTROL
One direction of travel through workzone.
Not to Scale



Temporary asphalt pavement shall be placed to maintain a 10 foot minimum lane width in all locations. No Geogrid reinforcement is required. All earthwork, crushed rock base, and asphalt pavement shall be Subsidiary to the bid item "AC Pavement, Temporary."

TEMPORARY PAVEMENT WIDENING DETAIL

TRAFFIC CONTROL GENERAL NOTES

As the various construction activities progress, certain situations may arise which will preclude adhering to the original construction sequence or which, in the opinion of the Contractor, would readily adapt themselves to a more efficient staging operation. Should this occur, the Contractor may submit an alternate plan for approval by the Engineer.

Prior to Phase I construction, the Contractor shall remove the existing Chain link fence and trees from Sta. 113+20 Lt. to Sta. 126+40 Lt., See Sheets 7-9. Once removal is complete notify Black Hills Energy and they will mobilize and relocate their line in this area. Contractor to allow 3 weeks for Black Hills Energy relocation. Coordinate fence removal with fence owner and Engineer.

Prior to Phase I construction, the Contractor shall contact Paul Sutherland (529-2620 or 655-0453) to coordinate work around the entry monuments adjacent to the driveway at Sta. 118+21 Lt. Mr. Sutherland will be reconstructing the entry monument for the property owner.

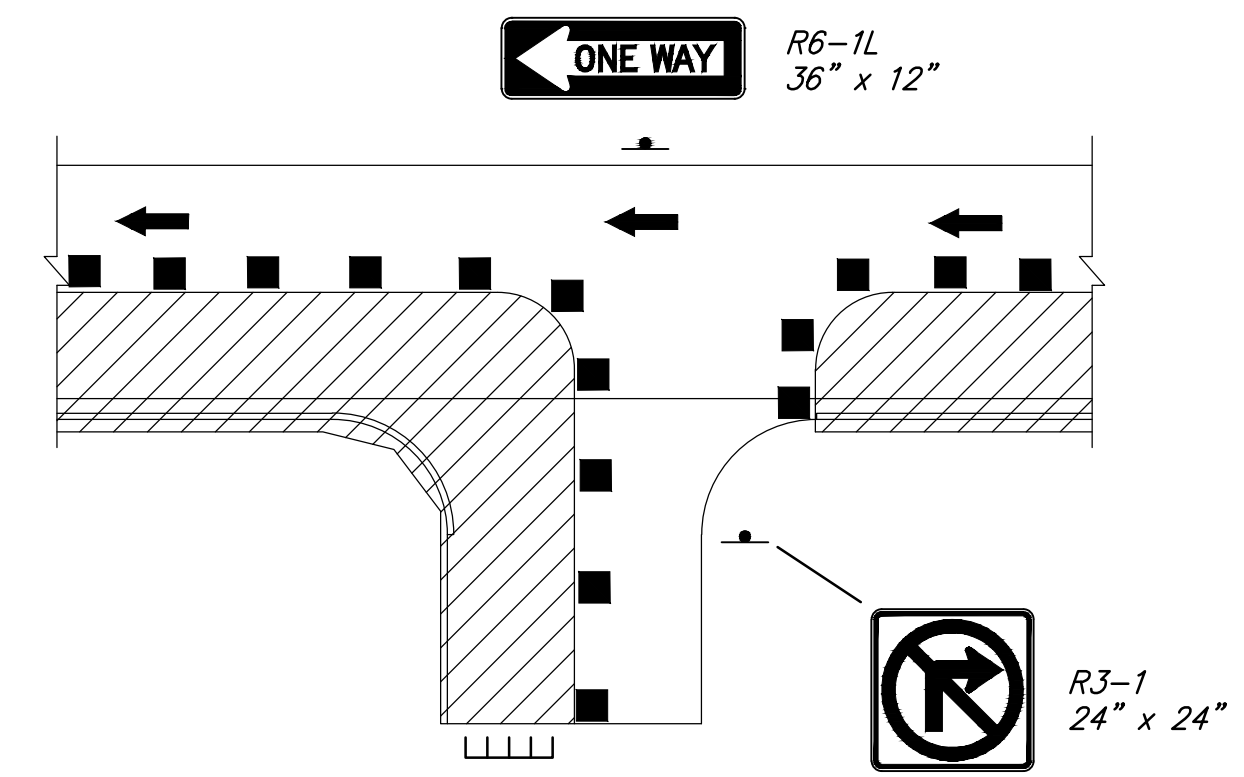
Tree removal Sta. 113+20 Lt. to 126+40 Lt. shall be paid for as "Site Clearing."

All traffic control devices and configurations shall conform with these plans and the latest version of the MUTCD. Where conflicts exist, these plans shall govern.

Access shall be maintained to all adjacent properties throughout construction at locations that have direct access to the work zone, except where noted in these plans.

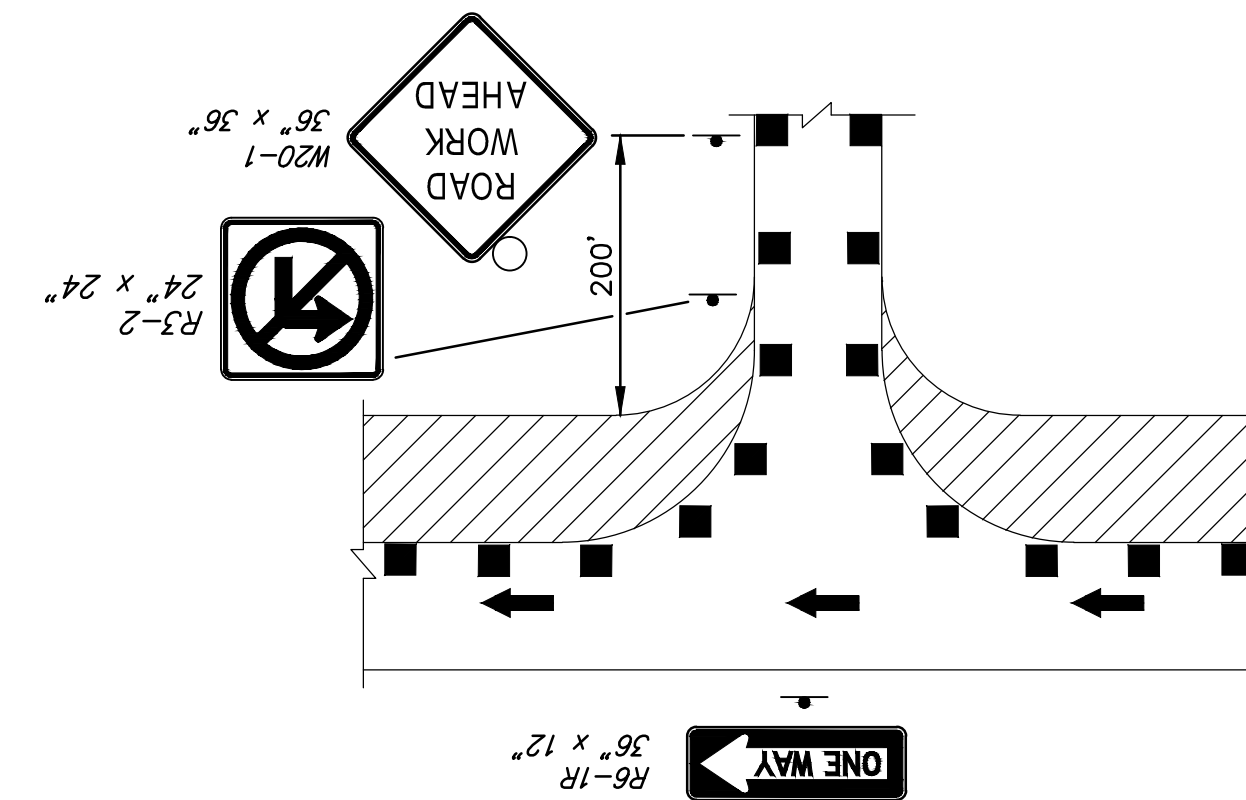
All items necessary for temporary traffic control, as shown in these plans, shall be paid for as "Traffic Control", Lump Sum, except for "AC Pavement (Temporary)" and subsidiary items required to carry traffic as shown in these plans. See detail this sheet.

The Contractor shall perform site grading, as necessary to maintain traversable slopes and adequate drainage during construction.



TYPICAL DRIVEWAY/ENTRANCE CONSTRUCTION
(ONE-WAY TRAFFIC ON MAIN ROAD)

Maintain access to homes and businesses at all times. If a property has more than one entrance, the entrances may be closed one at a time for construction. Otherwise, construct entrance in halves.



TYPICAL ENTRANCE & SIDEROAD OPEN
(ONE-WAY TRAFFIC ON MAIN ROAD)

LEGEND	
■	Channelizing Device
→	Traffic Flow
▨	Work Zone
▧	Temporary Pavement AC Pavement, Temporary 6" (4" Base)
⏏	Type III Barricades (Complete Closure)
⏏	Type III Barricades (Staggered position)
⚡	Sign
○	Type "A" Low Intensity Warning Light

See Sh. No. 89 for Traffic Signing and Details.
See Sh. No. 85 for Detour Plan.
See Sh. No. 88 for Typical Traffic Control for Road Closures.
See details this sheet for Typical Traffic Control Signing.

CITY OF WICHITA

**CONSTRUCTION SEQUENCE
GENERAL NOTES**



8615 W. Frazier Lane, Suite 2
Wichita, KS 67212
Phone: 316-722-4472

DESIGNED	ABS	DRAWN	AL/ES/PM	SCALE	SHEET NO.
CHECKED	ABS/CDM	DATE	01/14	No Scale	79