

LEGEND	
	Channelizing Device
	Traffic Flow
	Phase I Work Zone
	Temporary Pavement AC Pavement, Temporary 6" (4" Base)
	Type III Barricades (Complete Closure)
	Type III Barricades (Staggered position)
	Sign
	Type "A" Low Intensity Warning Light



PHASE I

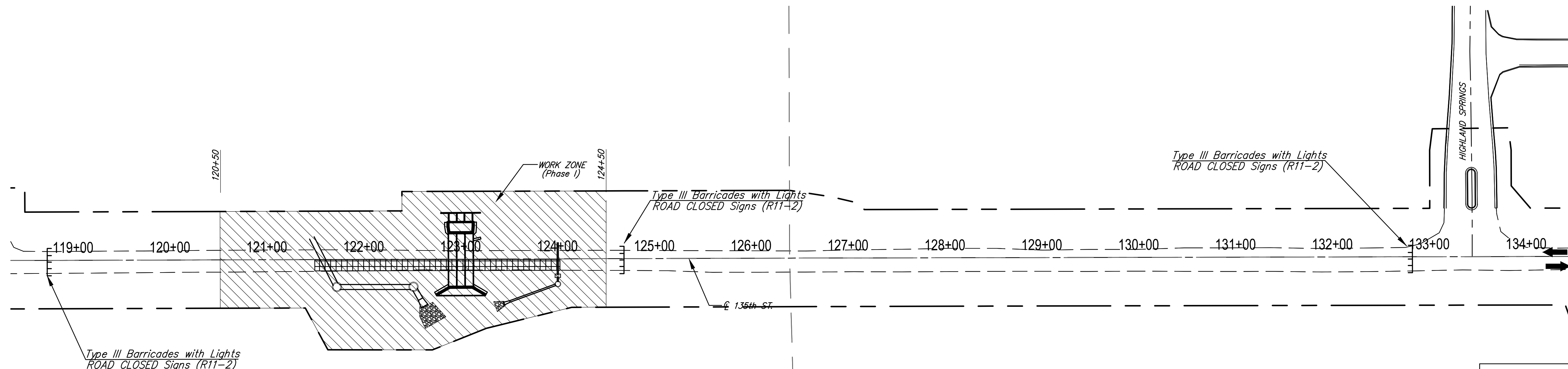
TRAFFIC CONTROL

Close 135th St. to both directions of traffic at Sta. 118+50 and Sta. 132+50. Detour traffic as shown on Sh. No. 85. Full closure is limited to 7 working days.

CONSTRUCTION

Remove existing culvert structure and construct RCB at Sta. 123+00. Construct storm sewer Line 8 connection to RCB. Install storm sewer Line 6 from Sta. 0+00 - Sta. 1+50 and storm sewer Line 9 from Sta. 0+00 - Sta. 1+00 in preparation for Phase II storm sewer installation. Lengths of pipe and structures to be installed as part of Phase I that are not under pavement may be installed prior to Phase I full closure. Construct temporary pavement on East half of street from Sta. 121+50 - Sta. 124+00 in preparation to receive traffic in Phase II.

See General Notes #21 and #22 for additional sequencing requirements.



CITY OF WICHITA			
CONSTRUCTION SEQUENCE PHASE I			
		8615 W. Frazier Lane, Suite 2 Wichita, KS 67212 Phone: 316-722-4472	
DESIGNED ABS	DRAWN PLM	SCALE 1"=50'	SHEET NO. 80
CHECKED ABS/CDM	DATE 01/14		

