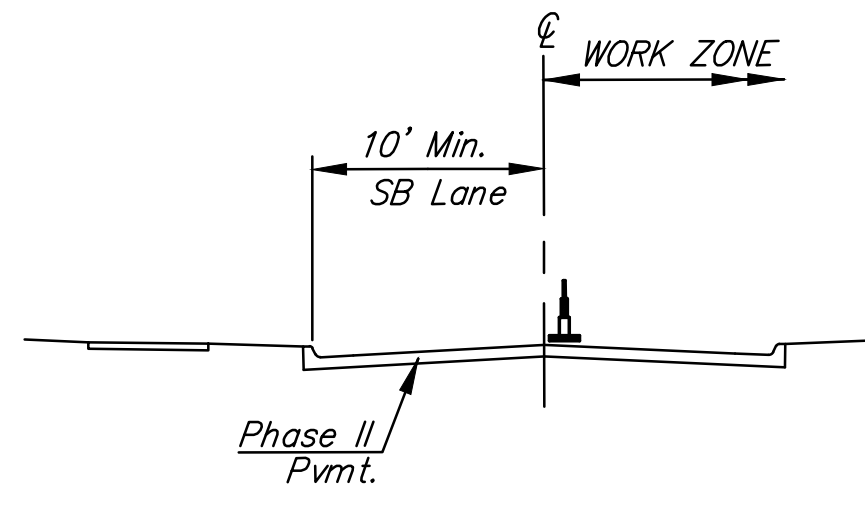


PHASE III
TRAFFIC CONTROL

Set up Phase III Detour as shown on Sh. No. 85. Carry one-way Southbound traffic on the West half of 135th St. as constructed in Phase II. Maintain a 10 foot minimum lane. Side streets Burton, Douglas, and Rolling Hills should remain open except during construction of the street connections. Either Burton or Douglas shall remain open at all times. One half of Rolling Hills shall remain open at all times. Duration of side street closures should be as short as possible. See Sh. No. 88 for side street Traffic Control details.

CONSTRUCTION

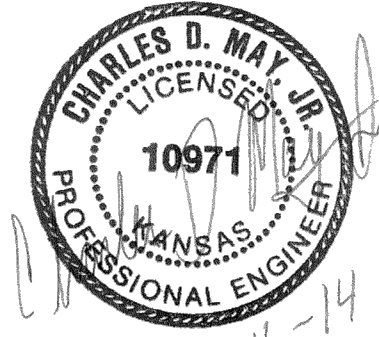
Construct curb and gutter, pavement, rock base, storm sewer, driveways, and sidewalk for the East half of 135th St. from Sta. 103+34 to 149+55. Connect to storm sewer system as constructed in Phase II.



TYPICAL SECTION-Phase III
Not to Scale

LEGEND

- Channelizing Device
- Traffic Flow
- Work Zone
- Temporary Pavement
AC Pavement, Temporary
6" (4" Base)
- Type III Barricades
(Complete Closure)
- Type III Barricades
(Staggered position)
- Sign
- Type "A" Low Intensity
Warning Light



CITY OF WICHITA

CONSTRUCTION SEQUENCE
PHASE III & IV

Schwab Eaton 8615 W. Frazier Lane, Suite 2
Wichita, KS 67212
Phone: 316-722-4472

DESIGNED ABS	DRAWN PLM	SCALE 1"=60'	SHEET NO. 83
CHECKED ABS/CDM	DATE 01/14		