

Lat. 94, Main 1. Southwest Interceptor Sewer SANITARY SEWER IMPROVEMENTS

to serve

RIVENDALE ADDITION - PH. I

CITY OF WICHITA, KANSAS

Neil Cable, P.E. City Engineer

Project Number

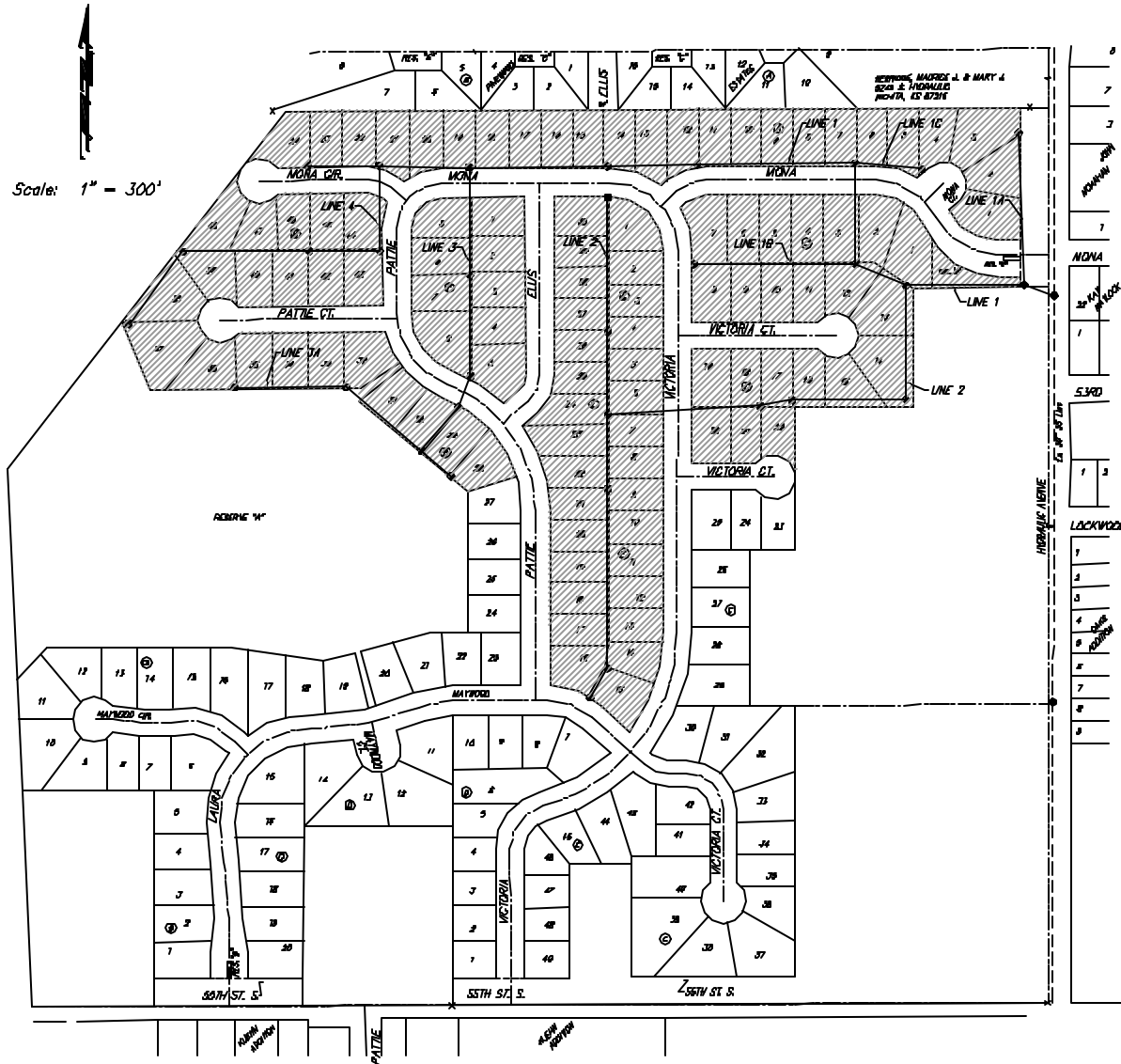
468-83714

O.C.A. Number

744022

Sheet Index

Title Sheet	1
Line 1	2-3
Line 2	4-5
Line 2A	6
Line 3	7
Line 3A	8
Line 4	9
Line 1B	10
Lines 1A & 1C	11
Manhole Detail	12
Std. Shallow Manhole Detail	12A
Ring & Cover Detail	13
Riser Detail	14
Soil Erosion BMP's	14A
Plat	15



Scale: 1" = 300'

Benchmarks

Benchmark #1
 City of Wichita Benchmark Disc,
 Hydraulic and 55th Street South,
 42.00' North of Centerline, 40.70'
 West of Centerline, 3.70' North of
 centerline of Power Pole, S8.20'
 Northwest of Southwest Corner, Sec.
 21, Twp. 28-S, R-1-E.
 Elev. = 76.79 City Datum
 Elev. = 1263.59 (NGVD29)

GENERAL NOTES:

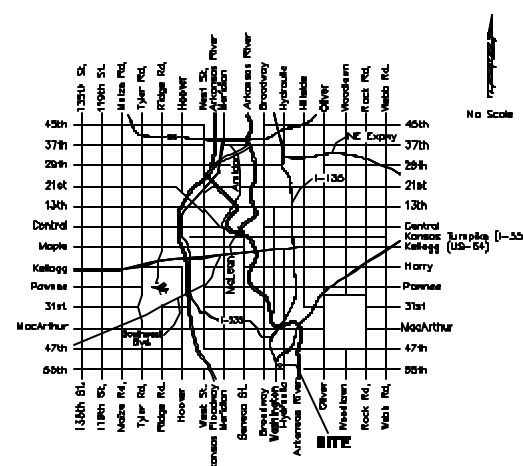
- Contractor will be required to provide notice to utility companies a minimum of twenty-four (24) hours prior to any excavation, as follows:

Kansas One-Call	887-2470
Cox Communications	262-4270
Kansas Gas Service	1-888-482-4950
Master Energy	383-8650
Aquila Energy	1-800-303-0357
Southwestern Bell	288-2245
City of Wichita Water Dept.	268-4583
City of Wichita Sewer Maint.	268-4024
City of Wichita Storm Sewer Maint.	268-4090
City of Wichita Traffic Maint.	268-4034
Coraco Pipeline Co.	1-800-231-2531
Williams Pipeline Co.	529-8600
Phillips Pipeline Co.	1-800-766-8230

The Contractor must notify the following in case of an emergency:
- Underground utility service lines and overhead utility pole lines are to be adjusted as necessary by others prior to construction unless the plans specifically call for their adjustment by the Contractor or unless the plans specifically identify a utility to be adjusted by its owner during construction. Existing utilities and their location, as shown on the plans, represent the best information obtainable for design. The Contractor will be required to work around existing utilities within the right-of-way which do not conflict with proposed construction.
- Trees and shrubs in public right-of-way which are in direct conflict with proposed new construction shall be removed by the Contractor with the Engineer's approval. Trees and shrubs which are not in direct conflict with proposed new construction shall be saved and protected from damage.

 Developer will clear all brush and tree piles in the southern half of the development and will be responsible for their complete removal prior to start of construction.
- The Contractor shall give all property owners and/or tenants of developed property abutting the construction of this project a minimum of ten (10) days advance notice prior to start of construction.
- The Contractor shall be responsible for preserving property irons. The Contractor will be required to re-establish any property irons which are damaged or destroyed by his construction operations. Such irons shall be reestablished by a licensed land surveyor in accordance with state laws.
- All existing and proposed erosion control measures including silt fencing, erosion control mat, straw bales, silt barriers, and const. entrance shall be maintained throughout construction by the contractor and until project is accepted by the City of Wichita. The on-site engineer shall complete weekly reports on the status of erosion control measures. The contractor shall be required to comply with maintenance and/or replacement of erosion control measures as determined by the on-site engineer until project is accepted by City of Wichita. Maintenance and/or replacement of erosion control measures to be paid by L.S. bid item "Erosion Control BMP's."
- Easements will be graded by others with the mass grading plan as part of the storm drain improvements. Easements shall be returned to original grade upon completion of construction.
- When connecting to existing manhole or stub, the contractor shall reshape manhole bottom or adjust the existing stub's alignment or elevation as necessary. Cost shall be subsidiary to project.
- The Contractor shall be responsible for maintaining continuous flow of sewage through construction. Contractor's proposed method for maintaining sewage flow shall be approved by the Engineer. Cost of maintaining flow of sewage through construction will not be paid for directly and this cost shall be considered as subsidiary to the other pay items of work.
- All areas disturbed during construction shall be seeded at 300 lbs./acre with Rye Grass immediately following construction in that area. Contractor shall prepare ground per City Specifications.
- Work shall begin on this project on the issued 'Notice to Proceed' date. Storm Water Sewer may or may not be complete by then. Sanitary Sewer Contractor to coordinate their construction sequence with that of the Storm Water Sewer Contractor.
- All front load sewers will require the trench to be backfilled with sand and flushed. Cost incidental to cost of new sewer pipe.
- Street Closing:** Hydraulic Avenue may be closed to traffic through one (1) weekend. Contractor shall fill out all proper paper work and notify local residents and all civil authorities (Fire, Police, EMS etc.) two (2) weeks prior to street closing. Hydraulic may be closed from Friday midnight to Sunday midnight. Through traffic shall be restored by Monday morning. Street may be properly temporary patched or plated to ensure traffic flow until street can be properly repaired.
- Flowable Fill:** Flowable fill has been deleted from all street crossings. Contractor shall Flush & Vibrate all street crossings or obtain proper trench compaction with Vibratory Compaction Equipment. Cost of performing these or any other type of trench compaction shall be incidental to the cost of sewer pipe. The Contractor shall complete all required compaction of street crossings to the Engineer's satisfaction. All street crossing backfill shall be a sand based material. All material shall be approved by the Engineer.

Benefit District



Vicinity Map

Nov 2003