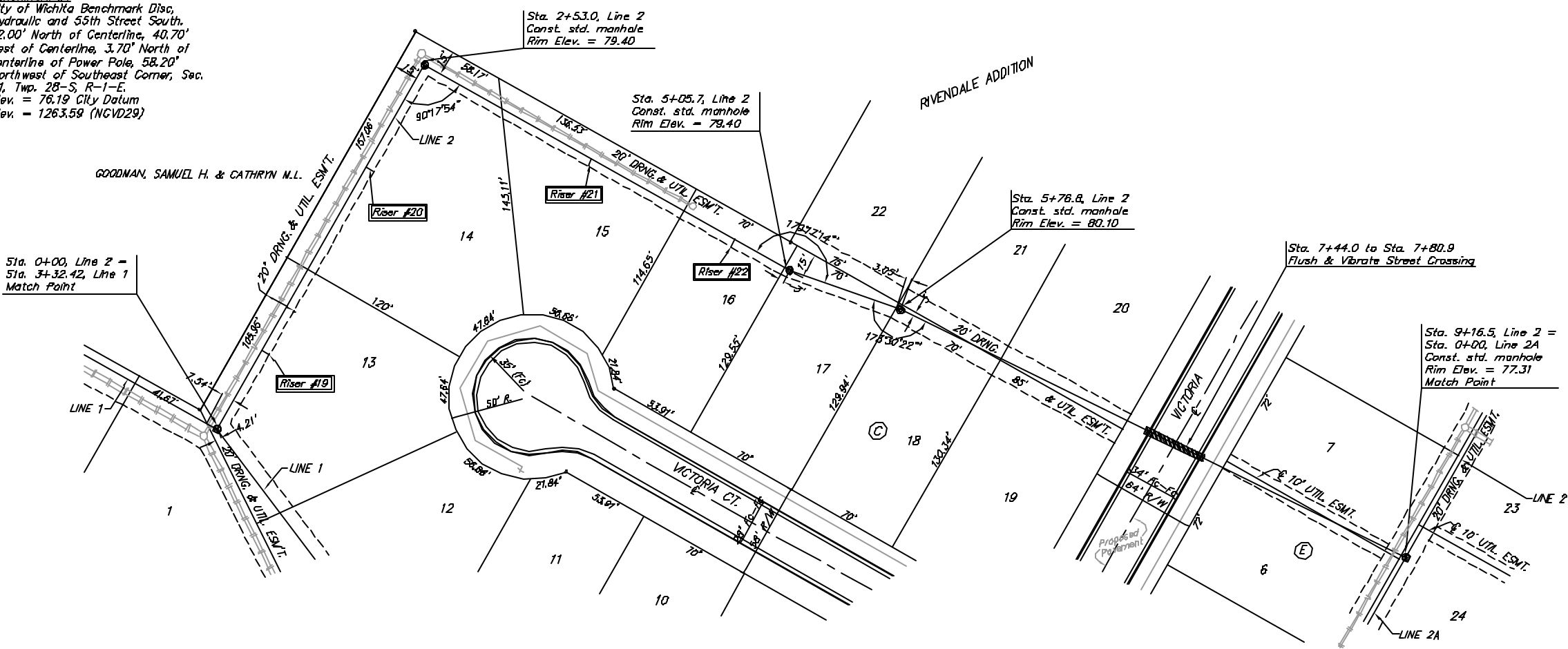


Benchmark #1
 City of Wichita Benchmark Disc,
 Hydraulic and 55th Street South,
 42.00' North of Centerline, 40.70'
 West of Centerline, 3.70' North of
 centerline of Power Pole, 58.20'
 Northwest of Southeast Corner, Sec.
 21, Twp. 28-S, R-1-E.
 Elev. = 76.19 City Datum
 Elev. = 1263.58 (NCVD29)

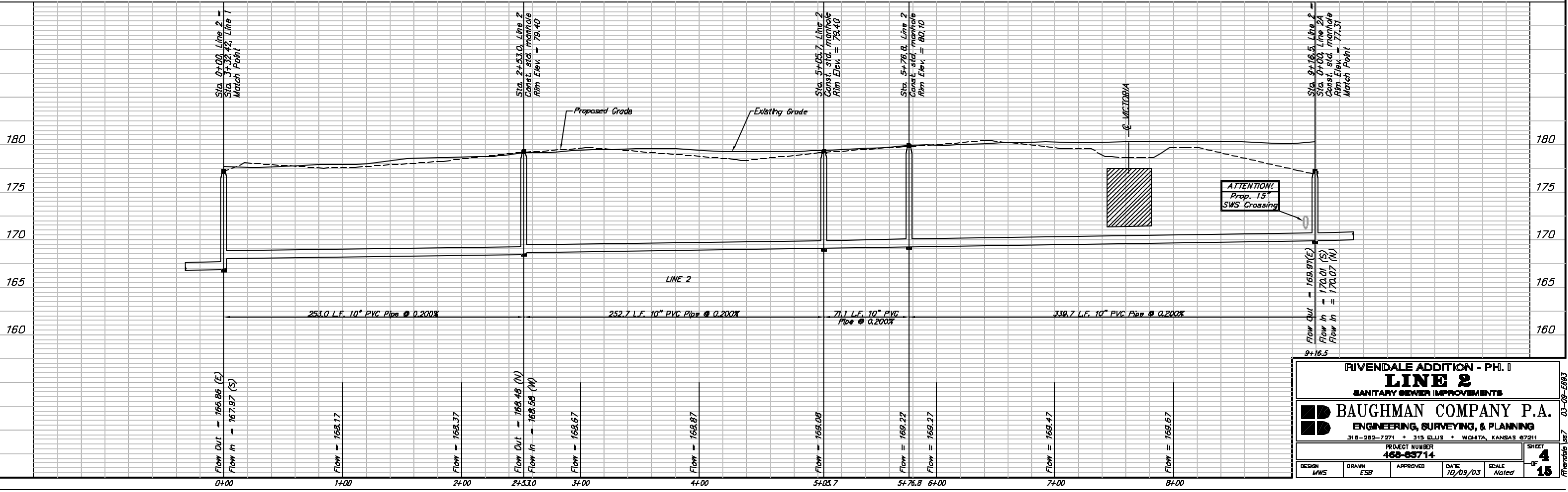


Scale: 1" = 40' Horizontal
 1" = 5' Vertical
 = Iron

SEWER SERVICE TABLE

NUMBER	TYPE	LOCATION				FOR INFORMATION ONLY	
		LOT NO.	BLOCK NO.	LINE NO.	STATION \ DIRECTION	APPROXIMATE LENGTH 4" PIPE	VERTICAL
19	8" X 4" Tee Saddle	13	C	1B	0+55/RL	5.0'	5.0'
20	8" X 4" Tee Saddle	14	C	1B	1+82/RL	5.5'	5.0'
21	8" X 4" Tee Saddle	15	C	1B	3+69/RL	5.5'	5.0'
22	8" X 4" Tee Saddle	16	C	1B	4+68/RL	5.0'	5.0'

NOTE: Vertical Riser Pipe shall be extended to 2' minimum above ground water elevation and 4' maximum below proposed ground elevation.



RIVENDALE ADDITION - PH. I
LINE 2
 SANITARY SEWER IMPROVEMENTS

BAUGHMAN COMPANY P.A.
 ENGINEERING, SURVEYING, & PLANNING
 318-282-7271 + 315 ELLIS + WICHITA, KANSAS 67211

PROJECT NUMBER: **468-83714**

DESIGN: MWS | DRAWN: ESP | APPROVED: [Signature] | DATE: 10/09/03 | SCALE: Noted

SHEET **4** OF **15**