

**GENERAL NOTES**

- ALL WATER MAINS AND APPURTENANCES SHALL BE INSTALLED IN ACCORDANCE WITH CITY OF ANDOVER, AND CITY OF WICHITA, KANSAS STANDARD SPECIFICATIONS FOR WATER MAIN INSTALLATIONS.
- CONTRACTOR WILL BE REQUIRED TO PROVIDE A MINIMUM ADVANCE NOTICE OF SEVENTY-TWO (72) HOURS TO UTILITY COMPANIES PRIOR TO STARTING ANY EXCAVATION AS FOLLOWS:  
KANSAS ONE-CALL 1-800-344-7233  
or 687-2470 (LOCAL WICHITA)
- THE CONTRACTOR MUST NOTIFY THE FOLLOWING IN CASE OF AN EMERGENCY:  
COX COMMUNICATIONS (CABLE) 262-0661  
BUTLER RURAL ELECTRIC (AFTER HOURS) (800)464-0600  
OR 220-2608 (LOCAL WICHITA)  
KANSAS GAS SERVICE (GAS) 383-8600  
SBC (TELEPHONE) 1-800-734-7630  
CITY OF ANDOVER (LES MANGUS) 733-2621  
CITY OF BENTON 778-1625  
WESTAR 383-8600
- THE WATER MAIN SHALL BE CONSTRUCTED ON THE ALIGNMENT SHOWN ON THE PLANS. TREES AND SHRUBS IN PUBLIC RIGHT OF WAY WHICH ARE IN DIRECT CONFLICT WITH PROPOSED NEW CONSTRUCTION SHALL BE REMOVED BY THE CONTRACTOR WITH THE ENGINEER'S APPROVAL, AND SHALL BE INCLUDED IN THE PRICE BID FOR THE INSTALLED WATER PIPE. TREES AND SHRUBS WHICH ARE NOT IN DIRECT CONFLICT WITH PROPOSED CONSTRUCTION SHALL BE SAVED AND PROTECTED FROM DAMAGE.
- OPENING AND CLOSING WATER VALVES SHALL BE DONE SLOWLY TO PREVENT DAMAGE TO THE WATER DISTRIBUTION SYSTEM FROM WATER HAMMER. ALL VALVES CLOSED BY THE CONTRACTOR MUST BE REOPENED AS NEW CONSTRUCTION PERMITS. PROJECT INSPECTOR MUST ASCERTAIN THAT ANY VALVE CLOSED BY THE CONTRACTOR IS REOPENED. CONTRACTOR WILL BE PERMITTED TO OPERATE WATER VALVES ONLY WHEN THE PROJECT INSPECTOR ASSIGNED TO THE PROJECT IS PRESENT.
- CONTRACTOR SHALL NOT START WORK ON THE PROJECT UNTIL THE PROJECT INSPECTOR IS ASSIGNED TO THE PROJECT AND IS PRESENT ON THE SITE. ANY WORK DONE WITHOUT INSPECTION WILL BE REQUIRED TO BE UNCOVERED FOR INSPECTION.
- UNDERGROUND UTILITY SERVICE LINES AND OVERHEAD UTILITY POLE LINES ARE TO BE ADJUSTED AS NECESSARY BY OTHERS PRIOR TO CONSTRUCTION UNLESS THE PLANS SPECIFICALLY CALL FOR THEIR ADJUSTMENT BY THE CONTRACTOR. EXISTING UTILITIES AND THEIR LOCATION, AS SHOWN ON THE PLANS, REPRESENT THE BEST INFORMATION OBTAINABLE FOR DESIGN. LOCATION INFORMATION HAS BEEN OBTAINED FROM THE VARIOUS UTILITY COMPANIES AND IS EITHER FROM COMPANY RECORD DRAWINGS OR COMPANY PROVIDED FIELD LOCATIONS. THE CONTRACTOR WILL BE REQUIRED TO WORK AROUND EXISTING UTILITIES WITHIN THE RIGHT-OF-WAY WHICH DO NOT CONFLICT WITH PROPOSED CONSTRUCTION.
- THE CONTRACTOR SHALL GIVE ALL PROPERTY OWNERS AND/OR TENANTS OF DEVELOPED PROPERTY DIRECTLY ADJUTING CONSTRUCTION OF THIS PROJECT A MINIMUM OF TEN (10) DAYS NOTICE PRIOR TO START OF CONSTRUCTION. CONTRACTOR SHALL PROMPTLY COMPLETE WORK AFFECTING THESE PROPERTIES AND REPLACE ALL IRRIGATION AND TURF DAMAGE TO THEIR PRE-CONSTRUCTION CONDITION. (USE EXACT SAME IRRIGATION COMPONENTS, 6" OF TOPSOIL, AND REPLACE TURF WITH NEW SOD OF SAME VARIETY.) COSTS SHALL BE SUBSIDIARY TO SITE RESTORATION. INFORM HOME OWNERS THAT WATERING OF SOD AFTER THE CONTRACTOR'S INITIAL INSTALLATION SOAKING SHALL BE THEIR RESPONSIBILITY.
- THE CONTRACTOR SHALL BE RESPONSIBLE FOR PRESERVING PROPERTY IRONS. THE CONTRACTOR WILL BE REQUIRED TO RE-ESTABLISH ANY PROPERTY IRONS WHICH ARE DAMAGED OR DESTROYED BY HIS CONSTRUCTION OPERATIONS. SUCH IRONS SHALL BE RE-ESTABLISHED BY A LICENSED LAND SURVEYOR IN ACCORDANCE WITH STATE LAWS. ALL COSTS FOR THIS WORK SHALL BE SUBSIDIARY TO SITE RESTORATION.
- THE CONTRACTOR SHALL RESTORE ALL DITCHES, SWALES, ROAD SHOULDERS, ENTRANCES AND BANK LINES TO THEIR ORIGINAL SLOPES AND GRADES EXCEPT AS SHOWN OTHERWISE.
- NO SERVICES WILL BE INSTALLED AS PART OF THIS PROJECT.
- INTERURBAN TRAFFIC GENERATED OUTSIDE THE PROJECT AREA, AND LOCAL BUSINESS OR RESIDENTIAL TRAFFIC GENERATED WITHIN THE PROJECT AREA ARE TO BE CARRIED THROUGH CONSTRUCTION AS FURTHER PROMULGATED BY PROJECT SPECIAL PROVISIONS.
- RUBBLE FROM THE REMOVAL OF MISCELLANEOUS STRUCTURES INCLUDING ANY TREES REMOVED AND TREE TRIMMINGS SHALL BE DISPOSED OF ON SITES TO BE PROVIDED BY THE CONTRACTOR. THESE SITES SHALL BE APPROVED BY THE ENGINEER AS TO SUITABILITY, APPEARANCE AND SITE LOCATION. LOCATIONS THAT, IN THE OPINION OF THE ENGINEER, WILL LEAVE AN UNSIGHTLY APPEARANCE WILL NOT BE APPROVED. ALL DISPOSAL SITES MUST BE APPROVED BY THE KANSAS DEPARTMENT OF HEALTH AND ENVIRONMENT. MATERIAL EITHER STOCKPILED OR DISPOSED OF IN A FLOOD PLAIN WOULD REQUIRE A KANSAS STATE BOARD OF AGRICULTURE PERMIT. ANY MATERIAL DUMPED IN WATERS OF THE UNITED STATES OR WETLANDS IS SUBJECT TO U.S. CORPS OF ENGINEERS PERMITTING REGULATIONS. ANY MATERIAL BURIED OR STOCKPILED BEYOND APPROVED CONSTRUCTION LIMITS WOULD REQUIRE ADDITIONAL ARCHAEOLOGICAL INVESTIGATIONS UNLESS BURIED IN A PREVIOUSLY APPROVED BORROW LOCATION.
- THE CONTRACTOR SHALL LAY A TRACER WIRE & SET TEST STATIONS ALONG ALL WATER LINE PIPE INSTALLED IN ACCORDANCE WITH CITY OF WICHITA SPECIFICATIONS & TRACER WIRE DETAIL ON DETAIL SHEET. COST IS SUBSIDIARY TO PIPE INSTALLATION.
- WATER LINE TRENCHES SHALL BE BACKFILLED PER CITY SPECIFICATIONS. SPECIAL CARE SHALL BE TAKEN WHEN BACKFILLING TRENCHES IN PROPOSED STREET R.O.W.. TRENCHES SHALL BE COMPACTED TO 95% STD. DENSITY IN 6"-8" MAX LIFTS.
- THE CONTRACTOR SHALL COORDINATE CONSTRUCTION OF WATER LINE WITH OTHER CONSTRUCTION ACTIVITIES ON SITE.
- SPOILS FROM EXCAVATION MAY BE WASTED ON SITE WITHIN PROJECT LIMITS. SPOILS LOCATION TO BE DETERMINED BY INSPECTOR/ENGINEER.

**EROSION CONTROL NOTES**

- CONTRACTOR SHALL USE BEST MANAGEMENT PRACTICES TO CONTAIN EROSION TO THE SATISFACTION OF THE CITY.
- ALL DISTURBED AREAS TO BE SEEDDED WITH RYE GRASS AT A RATE OF 200 LBS. PER ACRE WITHIN 10 DAYS OF CONSTRUCTION. CONTRACTOR TO PREPARE GROUND PER CITY SPECIFICATIONS. THE CONTRACTOR SHALL LIMIT SOIL DISTURBANCES TO THE IMMEDIATE CONSTRUCTION IMPROVEMENT AREA. A 50' VEGETATIVE BUFFER SHALL BE MAINTAINED ALONG THE INSIDE OF CONSTRUCTION/BENEFIT DISTRICT BOUNDARIES. CONTRACTOR SHALL BE PREEMPTIVE IN PLACING EROSION CONTROL PRIOR TO WEATHER EVENTS. SURFACE EROSION FROM SLOPES OR TOWARDS DRAINAGE WAYS SHALL BE INTERCEPTED WITH ONE OR MORE ACCEPTABLE BMP METHODS. REFER TO EROSION CONTROL DETAILS. COST IS SUBSIDIARY TO SITE PREPARATION AND RESTORATION.

**WATER DISTRIBUTION SYSTEM IMPROVEMENTS**

TO SERVE

**THE CORNERSTONE FOURTH ADDITION**

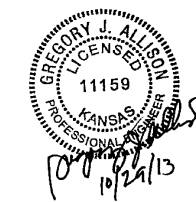
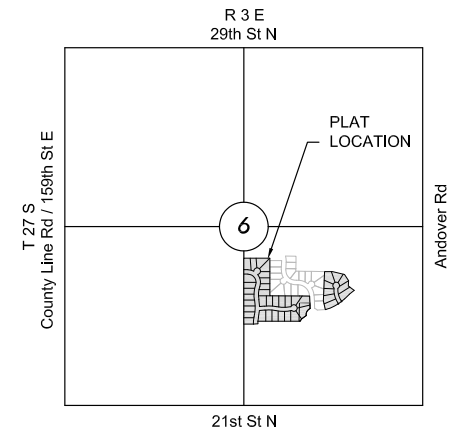
THE CITY OF ANDOVER, BUTLER COUNTY, KANSAS

CITY OF WICHITA PROJECT NO. 1771 PPW

OCA 607853

**BENCHMARKS**

- BM #1 Chiseled square between Lots 9 and 10, Block 1, The Cornerstone Third Addition, top of curb Sandstone Street. Elevation = 1359.48 (NGVD 29)
- BM #2 Chiseled square between Lots 2 and 3, Block 1, The Cornerstone Third Addition, middle of concrete inlet back of curb Sandstone Street. Elevation = 1353.31 (NGVD 29)
- BM #3 Chiseled square South end of Island, Southwest of roundabout, The Cornerstone Third Addition, top of curb Cornerstone Parkway. Elevation = 1353.31 (NGVD 29)



**VICINITY MAP**

No Scale

**INDEX TO DRAWINGS**

SHEET NO.	DESCRIPTION
1	TITLE SHEET
2	DETAILS
3	LINE 1
4	LINE 2
5	LINES 3 & 4
6-11	EROSION CONTROL DETAILS
12	PLAT

APPROVED AS NOTED  
BY CITY ENGINEER OF WICHITA,  
BY WICHITA WATER & SEWER DEPARTMENT,  
& BY WICHITA FIRE DEPARTMENT

Water Mains (Public Works) *[Signature]* 10-29-13  
Water Mains (Water & Sewer Dept.) *[Signature]* 10-29-13  
Fire Prot. Line (Fire Dept.) *[Signature]* 10-30-2013

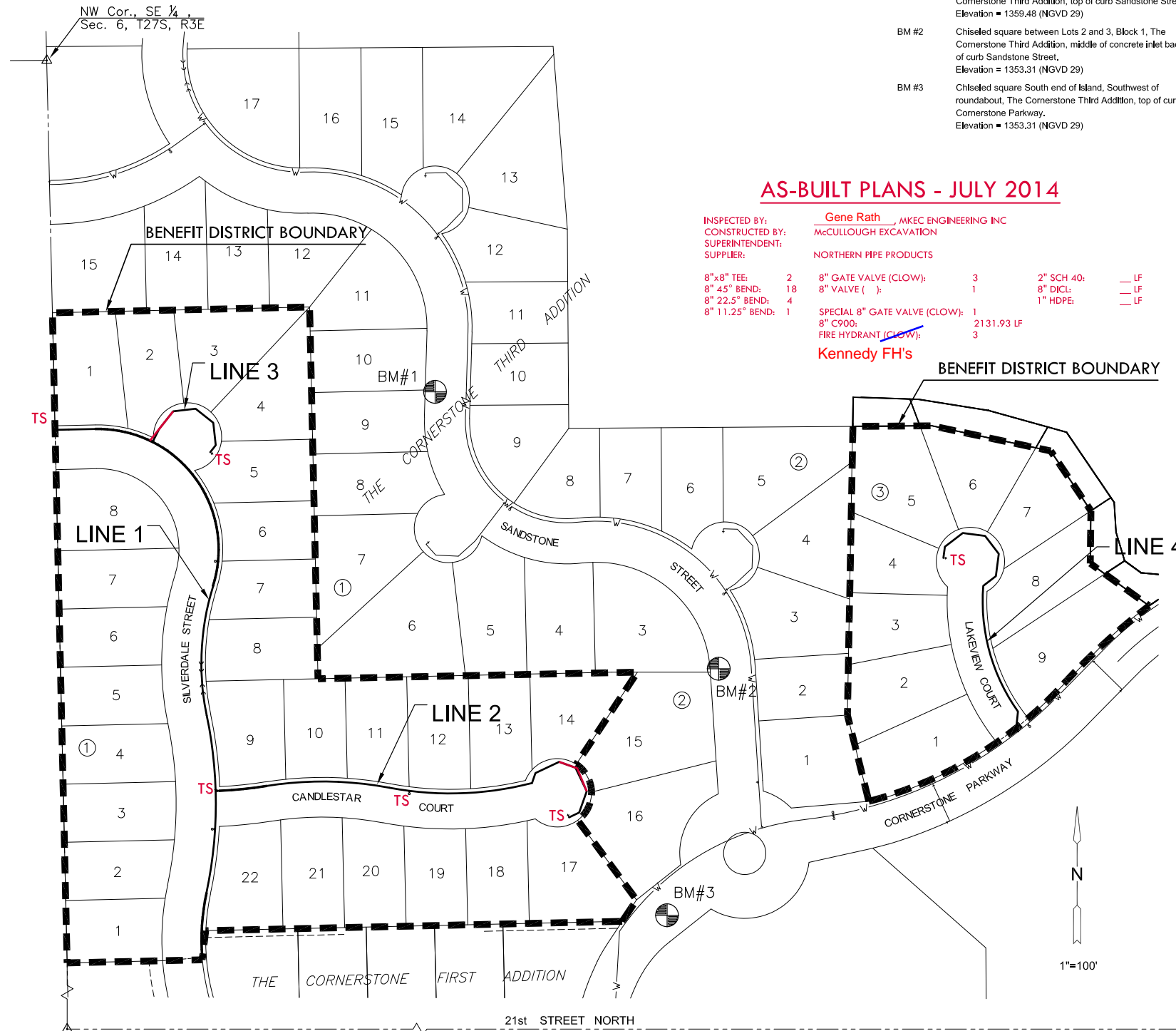
**NOTE TO CONTRACTORS**

**Public Property:**

Inspection and testing for the waterline is to be provided by a Licensed Consulting Engineering Firm under contract with the Owner/Developer. Said inspection to be in accordance with the City of Wichita Standard Construction Engineering Practices and certified by a Professional Engineer licensed in the state of Kansas. No work shall be performed in dedicated easements or public rights-of-way by the Contractor without such inspection, nor shall any work be commenced without written authorization by the City Engineer. All construction and materials shall comply with the City of Wichita Specifications and Standards (on file and available in the City Engineer's Office).

**Private Property:**

Installation and testing for the fire protection line is to be performed by a City of Wichita Licensed Fire Protection Contractor in accordance with the fire codes as adopted by the City of Wichita. All materials and construction practices for the fire protection line shall comply with the fire codes as adopted by the City of Wichita (available from the City of Wichita Fire Department). The Contractor shall not commence work without notification to and approval of the Wichita Fire Department. Inspection of the fire protection line is to be provided by a licensed engineering firm under contract with the Owner/Developer and the Fire Department. The contractor shall not start work until the project inspector is assigned to the project and present on the site. Any work done without inspection will be required to be uncovered for inspection.



**AS-BUILT PLANS - JULY 2014**

- INSPECTED BY: Gene Rath, MKEC ENGINEERING INC  
CONSTRUCTED BY: McCULLOUGH EXCAVATION  
SUPERINTENDENT:  
SUPPLIER: NORTHERN PIPE PRODUCTS
- |                   |                         |              |    |
|-------------------|-------------------------|--------------|----|
| 8"x8" TEE: 2      | 8" GATE VALVE (CLOW): 3 | 2" SCH 40: 1 | LF |
| 8" 45° BEND: 18   | 8" VALVE ( ): 1         | 8" DICL: 1   | LF |
| 8" 22.5° BEND: 4  |                         | 1" HDPE: 1   | LF |
| 8" 11.25° BEND: 1 |                         |              |    |
- SPECIAL 8" GATE VALVE (CLOW): 1  
8" C900: 2131.93 LF  
FIRE HYDRANT (CLOW): 3  
**Kennedy FH's**

**LEGEND**

- W — EXISTING WATER
- — — PROPOSED WATER

**NOTE: WATER LINE VALVES TO BE OPERATED BY CONTRACTOR ONLY IF WATER INSPECTOR IS ON SITE.**

NOTE: ALL LINES TO BE INSTALLED BY OTHERS ARE SUBJECT TO MABCD REVIEW.  
NOTE: CONTRACTOR TO VERIFY DEPTH AND LOCATION OF EXISTING UTILITIES PRIOR TO CONSTRUCTION.



WATER DISTRIBUTION PLANS FOR  
**THE CORNERSTONE FOURTH ADDITION**  
CITY OF ANDOVER

©2013 MKEC Engineering  
All Rights Reserved  
www.mkec.com  
These drawings and their contents, including, but not limited to, all concepts, designs, & ideas are the exclusive property of MKEC Engineering (MKEC), and may not be used or reproduced in any way without the express consent of MKEC.

**TITLE SHEET**

PROJECT NO.	1771 PPW
DATE	OCT. 2013
SCALE	AS SHOWN
DESIGNED	DFL
DRAWN	KKL
CHECKED	GJA
#	NO.
REVISION	DATE

SHEET NO.  
**1 OF 12**



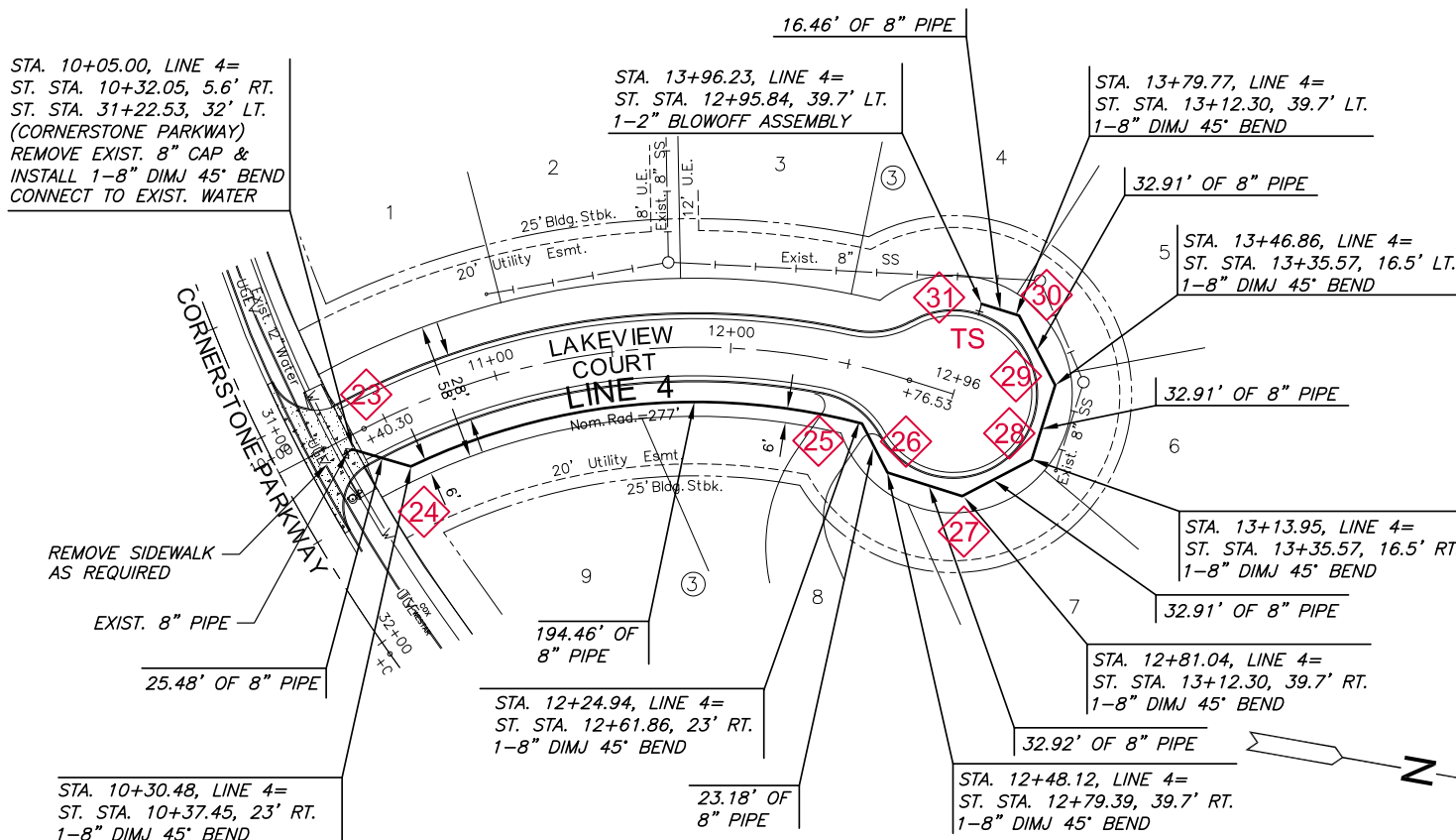
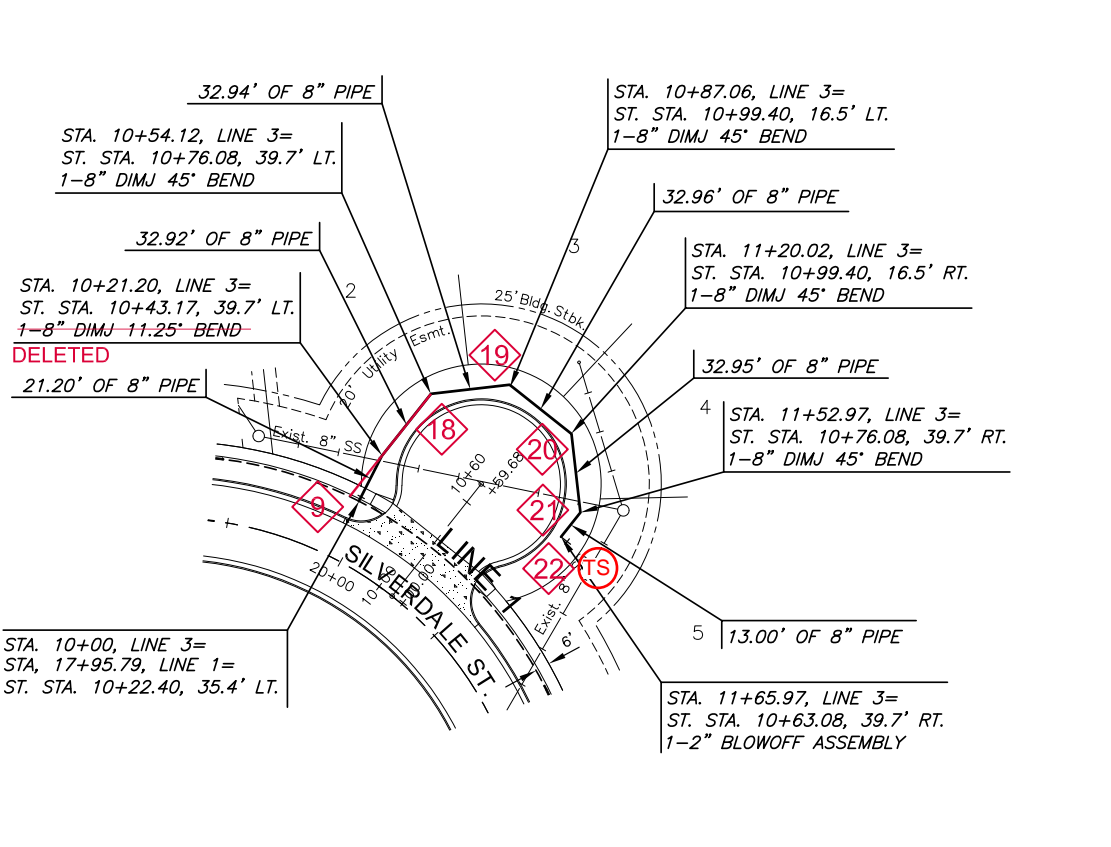


©2013  
MKEC Engineering  
All Rights Reserved  
www.mkec.com  
These drawings and their contents, including, but not limited to, all concepts, designs, & ideas are the exclusive property of MKEC Engineering (MKEC), and may not be used or reproduced in any way without the express consent of MKEC.

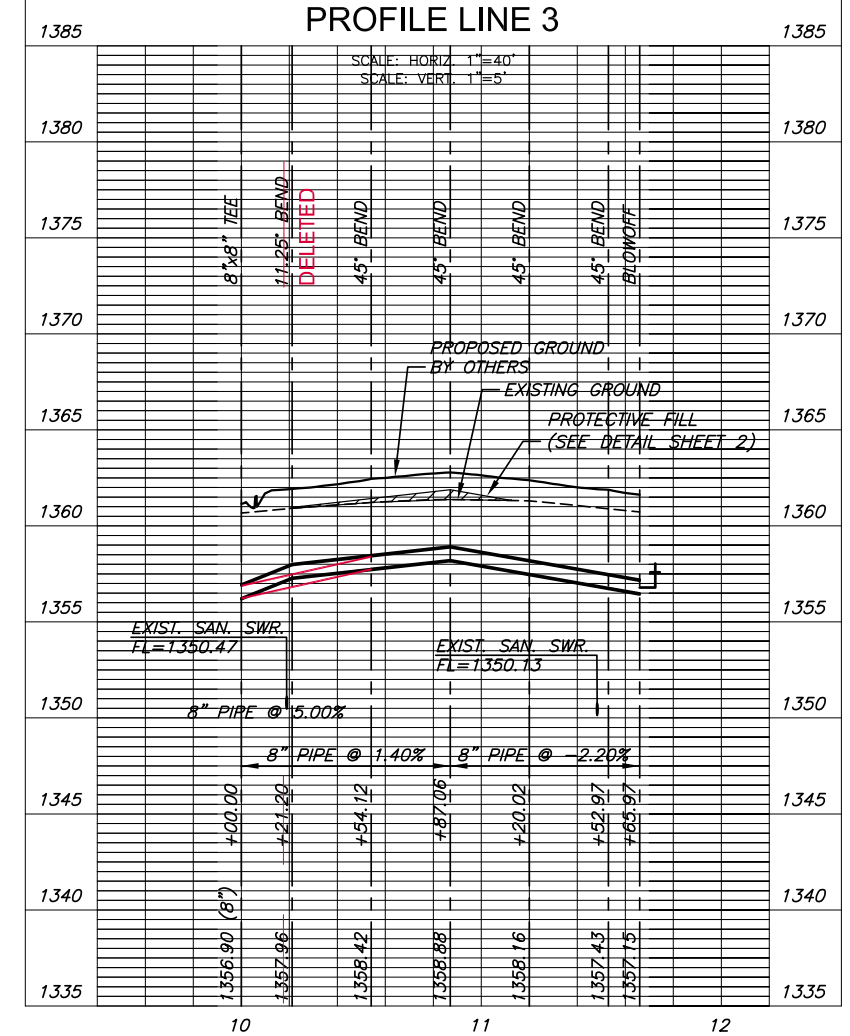
**WATER LINES 3 & 4**

PROJECT NO.	1771 PPW	
DATE	OCT. 2013	
SCALE	AS SHOWN	
DESIGNED	DRAWN	CHECKED
DFL	KKL	GJA
#	REVISION	###/##/##
NO.	REVISION	DATE

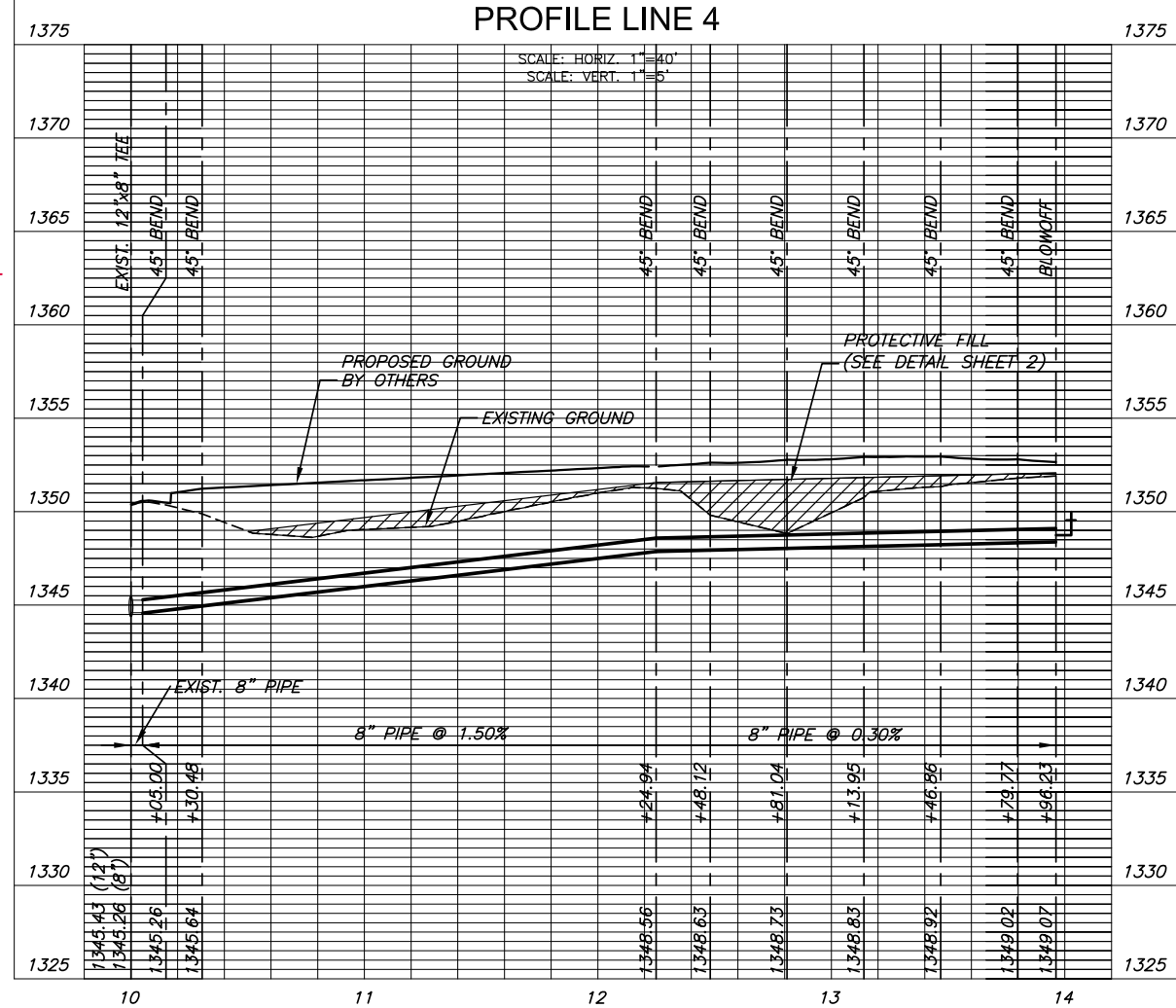
GREGORY J. ALLISON  
LICENSED PROFESSIONAL ENGINEER  
KANSAS  
11159  
10/21/13



PLAN LINE 3  
PROFILE LINE 3



PLAN LINE 4  
PROFILE LINE 4



AS-BUILT PLANS - JULY 2014

NOTE:  
CONTRACTOR TO VERIFY  
LOCATION AND ELEVATION OF  
EXIST. 12" WATER LINE AND  
ALL OTHER UTILITIES PRIOR  
TO CONSTRUCTION.

