

**Benchmark:**  
 City of Wichita Benchmark Disc,  
 Hydraulic and 55th Street South,  
 42.00' North of Centerline, 40.70'  
 West of Centerline, 3.70' North of  
 centerline of Power Pole, 58.20'  
 Northwest of Southeast Corner, Sec.  
 21, Twp. 28-S, R-1-E,  
 Elev. = 76.19 City Datum

Sta 0+00, Line 2  
 Begin Construction of RCP SWS.  
 Install pipe plug (Cost  
 incidental to cost of pipe).

Sta 0+33.5, Line 2  
 Construct std.  
 manhole (5' dia.)  
 Top Elev. = 77.60

**CAUTION**  
 Ex. 8" SS  
 Crossing

Install 'Inlet  
 Protection' per  
 detail, sheet 2.

**CAUTION**  
 Ex. 4" SS  
 Crossing

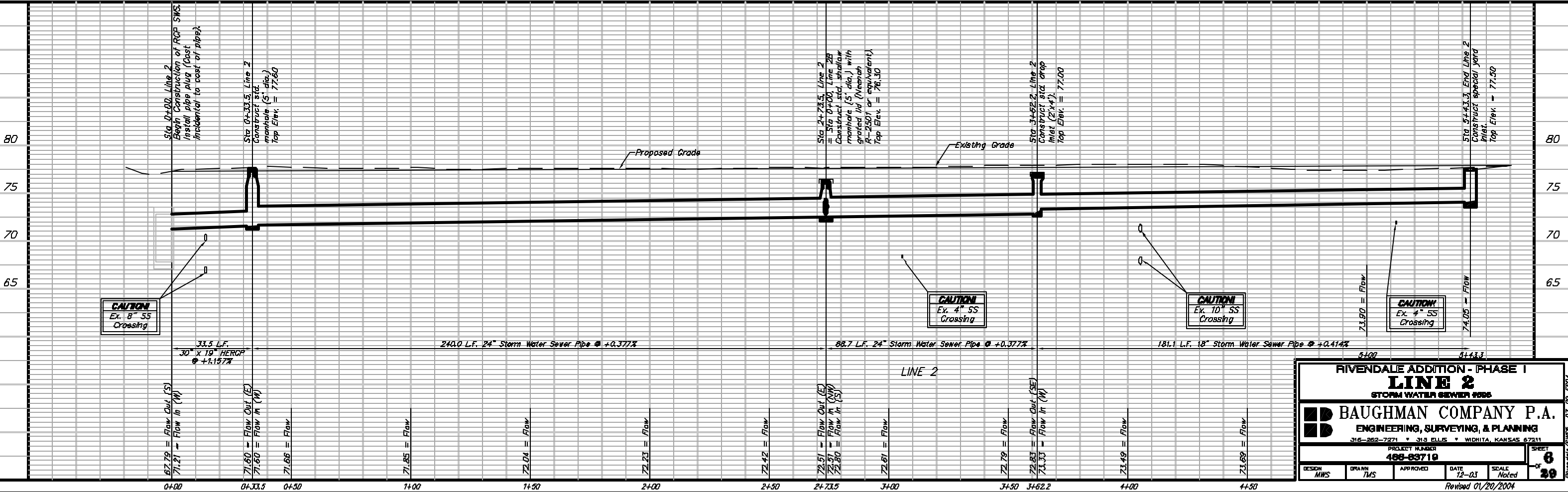
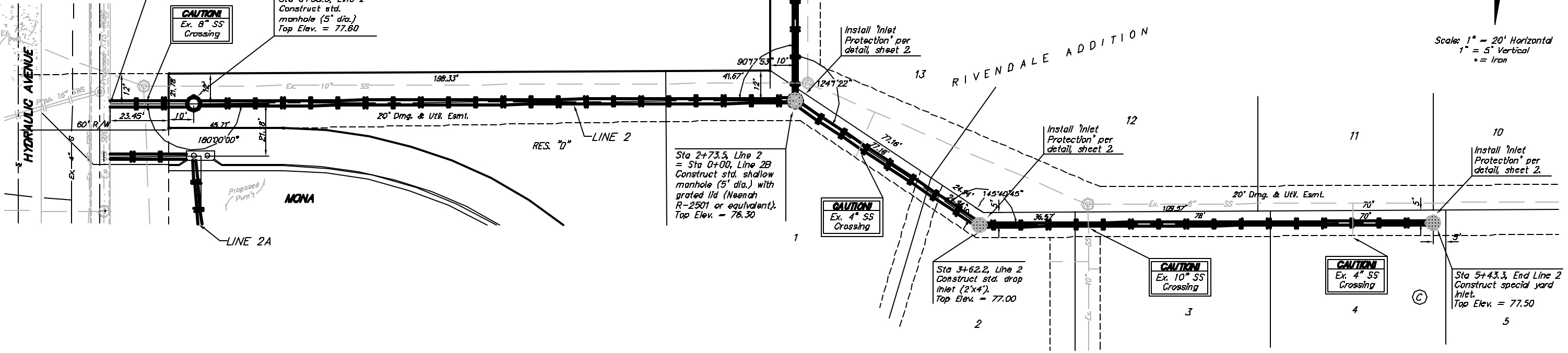
Sta 3+62.2, Line 2  
 Construct std. drop  
 inlet (2'x4').  
 Top Elev. = 77.00

**CAUTION**  
 Ex. 10" SS  
 Crossing

**CAUTION**  
 Ex. 4" SS  
 Crossing

Sta 5+43.3, End Line 2  
 Construct special yard  
 inlet.  
 Top Elev. = 77.50

Scale: 1" = 20' Horizontal  
 1" = 5' Vertical  
 \* = Iron



**RIVENDALE ADDITION - PHASE I**  
**LINE 2**  
 STORM WATER SEWER 2006

**BAUGHMAN COMPANY P.A.**  
 ENGINEERING, SURVEYING, & PLANNING  
 316-262-7271 • 315 ELLIS • WICHITA, KANSAS 67211

PROJECT NUMBER: **488-83719**

DESIGN: MWS    DRAWN: TMS    APPROVED: \_\_\_\_\_    DATE: 12-03    SCALE: Noted    SHEET: **6** OF **30**

Revised 01/20/2004