

4-1

MH # 5845-402
Approx depth = 7.0 ft

Point Repair:
Remove a manhole at 205 lf south of MH 5845-402.
Manhole is buried approx. 18".
Remove and replace 5 lf of 8" pipe from the south wall of the manhole to 5 lf south.
Remove and replace 20 lf of 8" pipe from the north wall of the manhole to 20 lf north.

2124 S. Oliver

2187 S. Glendale

417'

KINKAID

KINKAID

OLIVER

Point Repair:
Remove and replace 10 lf of 8" pipe from the north wall of MH 5845-400 to 10 lf north.

30'

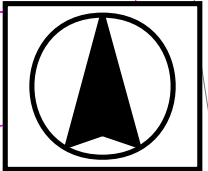
279'

MH # 5845-400
Replace Manhole Frame & Cover
Approx depth = 8.8 ft

ELPYCO

PINECREST

SITE 4



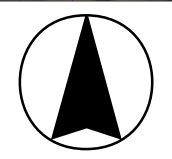
4-2

ELPYCO

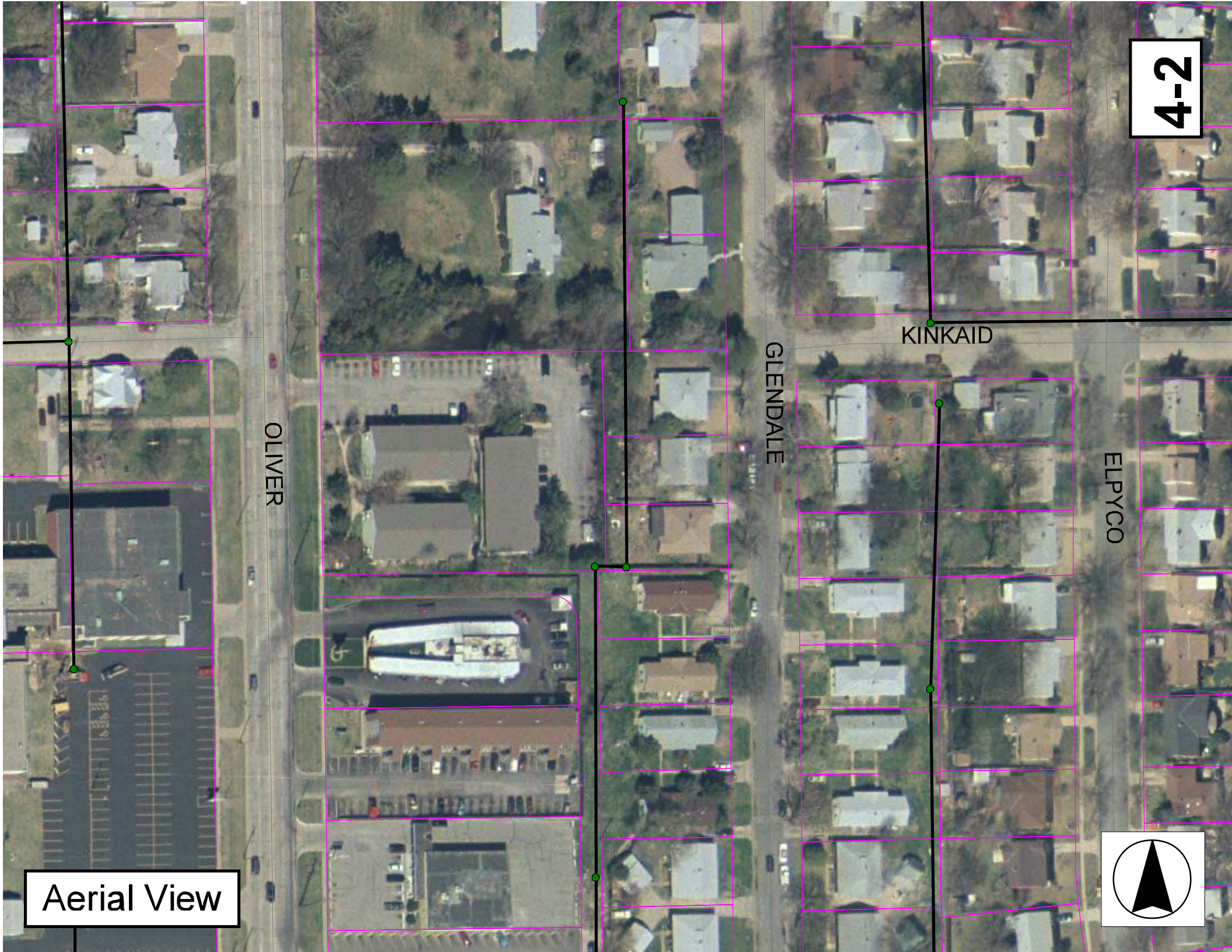
KINKAID

GLENDALE

OLIVER



Aerial View



Television Inspection Master Report

9/26/2003
10:56:59AM

US Manhole: 5845-402 2157 S GLENDALE
DS Manhole: 5845-400 2213 S GLENDALE ST

Date Insp: 7/9/2001 Basin: C01D

Dir Televised: Upstream To Downstream

Pipe Information

Shape: Round Length Status: Project No.: G-031
Dia/Ht Width: 8 Material: VCP Index:
Length: 417.4 Slope: 0.208 Surface:
Pipe Sec Length:

Inspection Information

Crew: 692 Percent Full: 10 Tape ID: 2961
Weather: Sunny Purpose: TV Existing Line Counter Start: 0.0
Surface Cond: Trees & Fences Flow: Normal Flow Counter Stop:
Dyed Test: No

Obs. #	VTR Counter Comment	Dist	Location	Description	Rating	Obsrvd (gpm)	Est. (gpm)	Ratings Struct	Clean	Remain (gpm)
1		0.0	US Manhole	5845-402						0.000
2		3.0	Crown	Broken Pipe	2		0.008	44	0	0.008
3		19.0	Joint	Roots	2		0.004	2	4	0.004
4		28.0	Joint	Roots	2		0.004	2	4	0.004
5		29.0	Invert	Broken Pipe	2		0.008	44	0	0.008
6		43.0	Invert	Broken Pipe	3		0.010	60	0	0.010
7		53.0	West	Wye Service	1		0.000	0	0	0.000
	SEAL OFF									
8		55.0	Quad 3 / L-Lt	Crack-Radial	3		0.004	5	0	0.004
9		80.0	East	Wye Service	1		0.000	0	0	0.000
10		113.0	West	Wye Service	1		0.000	0	0	0.000
	SEAL OFF									
11		124.0	Invert	Broken Pipe	3		0.010	60	0	0.010
12		127.0	Invert	Broken Pipe	2		0.008	44	0	0.008
13		157.0	East	Wye Service	1		0.000	0	0	0.000
	SEAL OFF									
14		160.0	Crown	Broken Pipe	2		0.008	44	0	0.008
15		163.0	West	Break-In Conn	1		0.001	0	0	0.001
16		165.0	Joint	Roots	2		0.004	2	4	0.004
17		168.0	Joint	Roots	4		0.010	10	25	0.010
18		171.0	Joint	Roots	3		0.008	5	8	0.008
19		174.0	Joint	Roots	4		0.010	10	25	0.010
20		175.0	East	Break-In Conn	3		0.004	2	0	0.004
	ROOTS inside									
21		186.0	Crown	Broken Pipe	2		0.008	44	0	0.008
				water begins to get deeper at this point / heading to a sag						
22		193.0	Camera Lens Submerge							0.000
23		198.0	Camera Blocked	Offset						0.000
				offset against the flow / must be replaced						

4-3

Television Inspection Master Report

9/26/2003
10:56:59AM

US Manhole: 5845-402 2157 S GLENLE
DS Manhole: 5845-400 2213 S GLENDALE ST

Date Insp: 7/9/2001 **Basin:** C01D

Dir Televised: Downstream To Upstream

Pipe Information

Shape:	Round	Length Status:	Project No.:	G-031
Dia/Ht Width:	8	Material:	VCP	Index:
Length:	417.4	Slope:	0.208	Surface:
Pipe Sec Length:				

Inspection Information

Crew:	692	Percent Full:	10	Tape ID:	2961
Weather:	Sunny	Purpose:	TV Existing Line	Counter Start:	
Surface Cond:	Trees & Fences	Flow:	Normal Flow	Counter Stop:	
Dyed Test:	No				

Obs. #	VTR Counter Comment	Dist	Location	Description	Rating	Obsrvd (gpm)	Est. (gpm)	Ratings		Remain (gpm)
								Struct	Clean	
1		0.0	DS Manhole	5845-400 / tv against the flow						0.000
2		4.0	Joint	Offset	3		0.010	20	0	0.010
3		7.0	East	Wye Service	1		0.000	0	0	0.000
4	SEAL OFF	10.0	West	Wye Service	1		0.000	0	0	0.000
5	SEAL OFF	54.0	East	Wye Service	1		0.000	0	0	0.000
6	SEAL OFF	66.0	West	Wye Service	1		0.000	0	0	0.000
7		75.0	Joint	Roots	3		0.008	5	8	0.008
8		105.0	East	Wye Service	1		0.000	0	0	0.000
9		123.0	Crown	Broken Pipe	3		0.010	60	0	0.010
10		147.0	Crown	Broken Pipe	2		0.008	44	0	0.008
11		156.0	East	Wye Service	2		0.000	0	0	0.000
12	ROOTS	178.0	West	Break-In Conn	1		0.001	0	0	0.001
13		200.0	West	Wye Service	1		0.000	0	0	0.000
14		203.0	East	Wye Service	1		0.000	0	0	0.000
15	SEAL OFF	212.0	Camera Blocked	Offset	4		0.030	60	0	0.030

(MH 401 NOT FOUND)

NOTE:

Records indicated a manhole at 205 lf south of MH 5845-402, but televising showed no manhole. Per Sewer Maintenance, the manhole does exist, is buried approx 18" and the pipe is not cut out from inside the manhole. The manhole is located in the yard of 2124 S. Oliver. There is a green flag on the manhole and also in the fence as a marker.

4-4