

NOTE: This site cannot be completed until cured-in-place liner has been installed "by others".

MH # 5347-570  
Abandon Manhole (over cured-in-place liner)  
Approx depth = 5.9 ft

403 N. Athenian

RAIL ROAD  
MCCOY

ATHENIAN

3RD

SAINT CLAIR

162'

199'

249'

189'

MH # 5347-568  
Abandon Manhole (over cured-in-place liner)  
Approx depth = 4.5 ft

331 N. Athenian

MH # 5347-567  
Replace Manhole Frame & Cover  
Approx depth = 4.5 ft

319 N. Athenian

180'

MH # 5347-xxx  
Abandon Manhole (over cured-in-place liner)  
Approx depth = 4.5 ft

108'

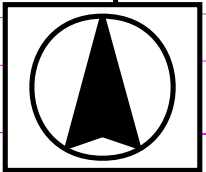
16'

209'

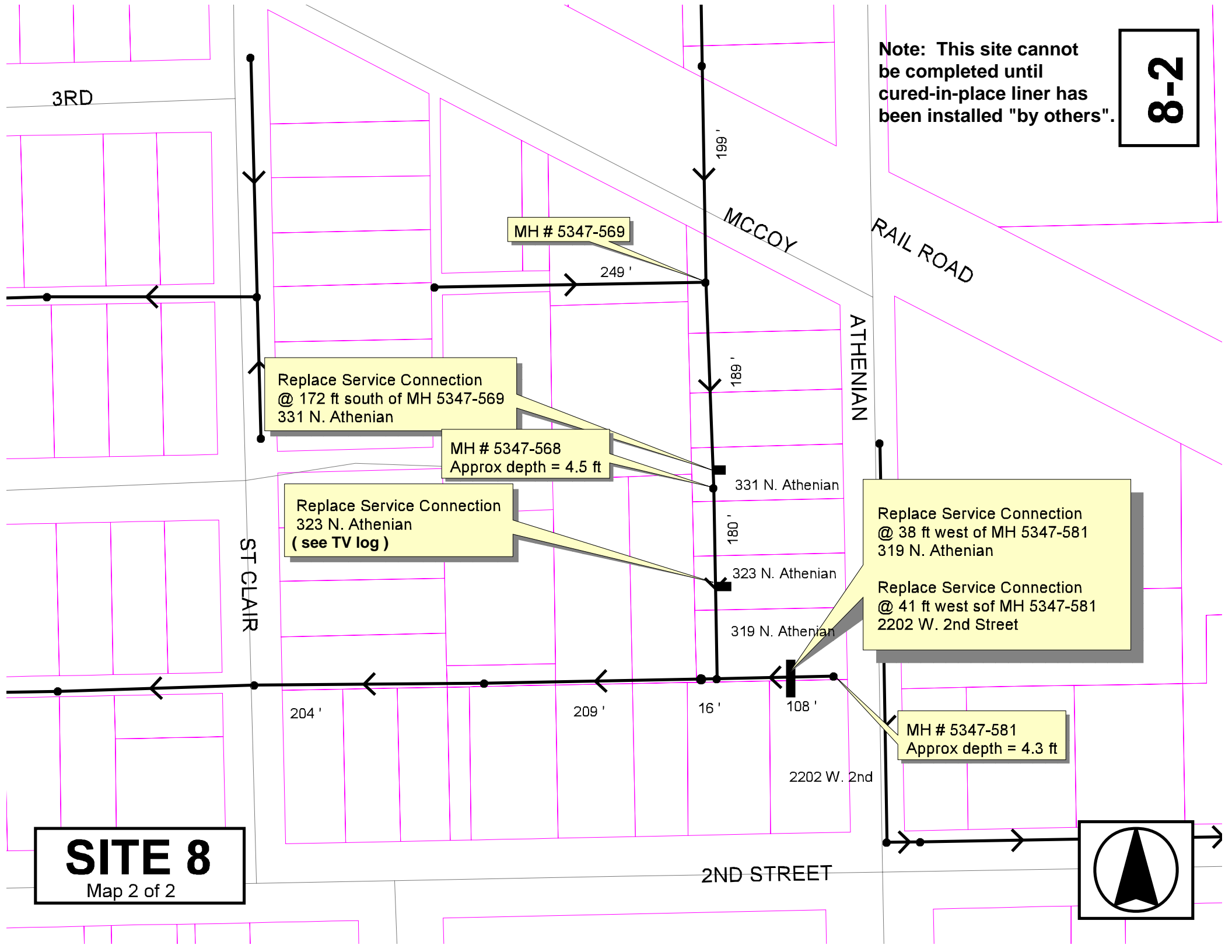
204'

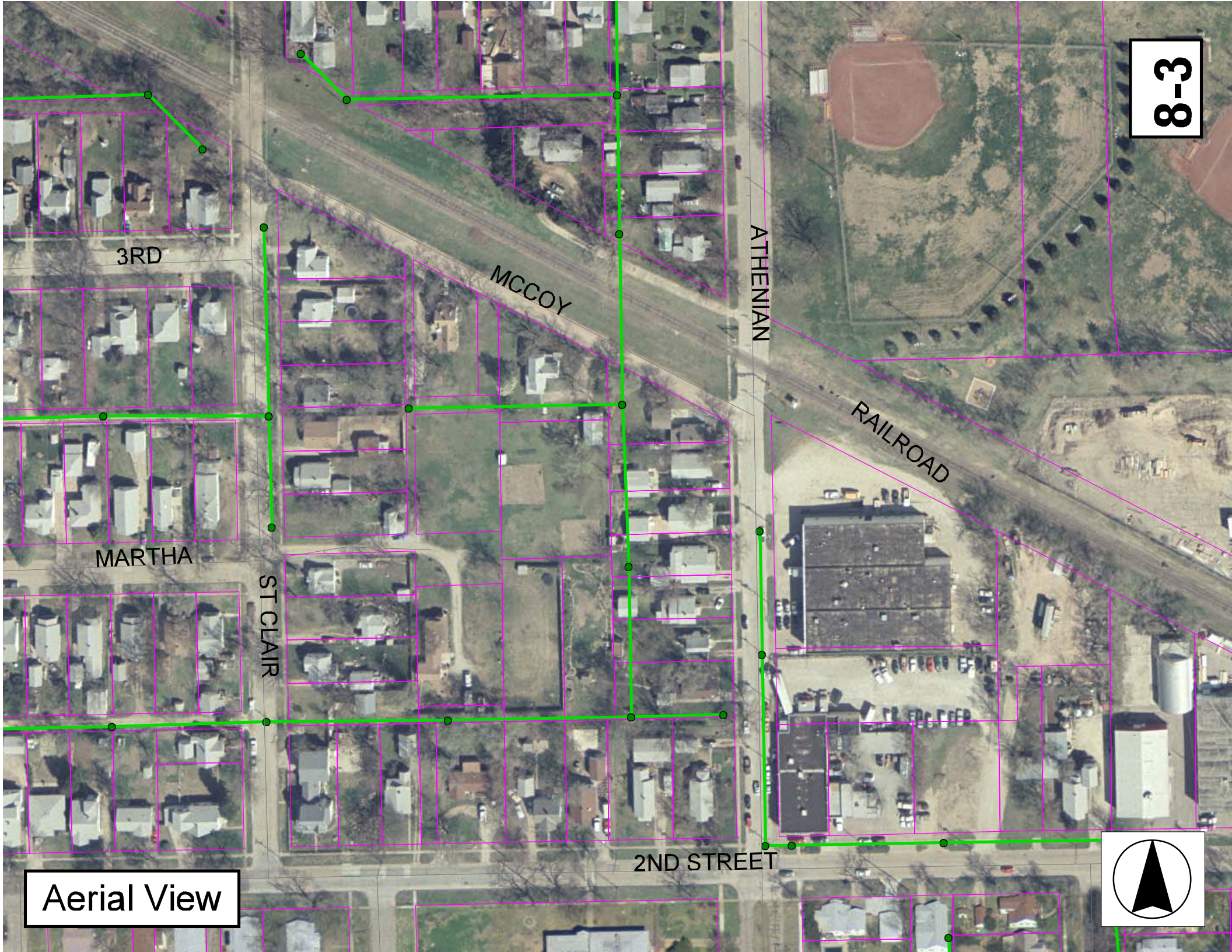
MH # 5347-565  
Reconstruct Shallow Manhole  
(pavement removal & replacement incidental)  
Approx depth = 4.5 ft

2ND STREET



Note: This site cannot be completed until cured-in-place liner has been installed "by others".





3RD

MCCOY

ATHENIAN

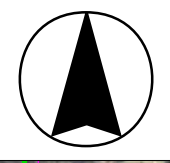
RAILROAD

MARTHA

ST CLAIR

2ND STREET

Aerial View



# Television Inspection Master Report

9/5/2003  
11:24:41AM

US Manhole: 5347-569  
DS Manhole: 5347-568

361 N ATHENIAN AVE  
331 N ATHENIAN

Date Insp: 5/29/2002

Basin: C07A

Dir Televised: Upstream To Downstream

## Pipe Information

|                  |          |                |              |          |
|------------------|----------|----------------|--------------|----------|
| Shape:           | Round    | Length Status: | Project No.: | B-164    |
| Dia/Ht Width:    | 8 0      | Material:      | VCP          | Index:   |
| Length:          | 188.5    | Slope:         | 0.101        | Surface: |
| Pipe Sec Length: | Comment: |                |              |          |

## Inspection Information

|               |                |               |                  |                |        |
|---------------|----------------|---------------|------------------|----------------|--------|
| Crew:         | 694            | Percent Full: | 5                | Tape ID:       | V-3385 |
| Weather:      | Sunny          | Purpose:      | TV Existing Line | Counter Start: | 0.00   |
| Surface Cond: | Trees & Fences | Flow:         | Normal Flow      | Counter Stop:  |        |
| Dyed Test:    | No             |               |                  |                |        |

| Obs. #                             | VTR Counter | Dist  | Location            | Description              | Rating | Obsrvd (gpm) | Est. (gpm) | Ratings Struct | Clean | Remain (gpm) |
|------------------------------------|-------------|-------|---------------------|--------------------------|--------|--------------|------------|----------------|-------|--------------|
| 1                                  |             | 0.0   | US Manhole 5347-569 |                          |        |              |            |                |       |              |
| 2                                  |             | 4.0   | Crown               | Crack-Radial             | 3      |              |            |                |       |              |
| 3                                  |             | 6.0   | East                | Wye Service              | 1      |              | 0.000      | 0              | 0     | 0.000        |
| E. WYE SEALED.                     |             |       |                     |                          |        |              |            |                |       |              |
| 4                                  |             | 8.0   | Crown               | Crack-Radial             | 1      |              | 0.001      | 1              | 0     | 0.001        |
| 5                                  |             | 14.0  | Crown               | Crack-Radial             | 1      |              | 0.001      | 1              | 0     | 0.001        |
| 6                                  |             | 17.0  | Quad 1 / U-Rt       | Crack-Radial             | 1      |              |            |                |       | 0.000        |
| 7                                  |             | 19.0  | Quad 4 / U-Lt       | Crack-Radial             | 1      |              | 0.001      | 1              | 0     | 0.001        |
| 8                                  |             | 22.0  | Crown               | Crack-Radial             | 1      |              | 0.001      | 1              | 0     | 0.001        |
| 9                                  |             | 24.0  | Crown               | Crack-Radial             | 1      |              |            |                |       | 0.000        |
| 10                                 |             | 28.0  | East                | Wye Service              | 1      |              | 0.000      | 0              | 0     | 0.000        |
| CRACK IN WYE CONN. 361 N. ATHENIAN |             |       |                     |                          |        |              |            |                |       |              |
| 11                                 |             | 29.0  | Crown               | Crack-Radial             | 3      |              |            |                |       |              |
| 12                                 |             | 32.0  | Crown               | Crack-Radial             | 1      |              | 0.001      | 1              | 0     | 0.001        |
| 13                                 |             | 35.0  | Invert              | Broken Pipe              | 5      |              |            |                |       | 0.000        |
| 14                                 |             | 37.0  | Crown               | Crack-Radial             | 1      |              | 0.001      | 1              | 0     | 0.001        |
| 15                                 |             | 40.0  | Crown               | Crack-Radial             | 1      |              | 0.001      | 1              | 0     | 0.001        |
| 16                                 |             | 50.0  | Crown               | Crack-Radial             | 1      |              | 0.001      | 1              | 0     | 0.001        |
| 17                                 |             | 53.0  | Crown               | Crack-Radial             | 1      |              | 0.001      | 1              | 0     | 0.001        |
| 18                                 |             | 54.0  | East                | Wye Service              | 1      |              | 0.000      | 0              | 0     | 0.000        |
| E. WYE SEALED.                     |             |       |                     |                          |        |              |            |                |       |              |
| 19                                 |             | 58.0  | Quad 1 / U-Rt       | Crack-Radial             | 1      |              | 0.001      | 1              | 0     | 0.001        |
| 20                                 |             | 61.0  | Crown               | Crack-Radial             | 1      |              | 0.001      | 1              | 0     | 0.001        |
| 21                                 |             | 66.0  | Quad 3 / L-Lt       | Broken Pipe              | 3      |              |            |                |       | 0.000        |
| 22                                 |             | 69.0  | Quad 4 / U-Lt       | Crack-Radial             | 2      |              |            |                |       |              |
| 23                                 |             | 76.0  | Crown               | Crack-Radial             | 3      |              |            |                |       |              |
| 24                                 |             | 78.0  | Joint               | Offset / PVC pipe begins | 3      |              | 0.010      | 20             | 0     | 0.010        |
| 25                                 |             | 80.0  | East                | Break-In Conn            | 1      |              | 0.001      | 0              | 0     | 0.001        |
| 359 N. ATHENIAN                    |             |       |                     |                          |        |              |            |                |       |              |
| 26                                 |             | 82.0  | Joint               | Offset / PVC pipe ends   | 3      |              | 0.010      | 20             | 0     | 0.010        |
| 27                                 |             | 84.0  | Quad 4 / U-Lt       | Crack-Radial             | 4      |              |            |                |       | 0.000        |
| 28                                 |             | 87.0  | Quad 4 / U-Lt       | Crack-Radial             | 1      |              | 0.001      | 1              | 0     | 0.001        |
| 29                                 |             | 90.0  | Quad 1 / U-Rt       | Crack-Radial             | 1      |              | 0.001      | 1              | 0     | 0.001        |
| 30                                 |             | 92.0  | Quad 4 / U-Lt       | Crack-Radial             | 1      |              |            |                |       | 0.000        |
| 31                                 |             | 97.0  | Quad 1 / U-Rt       | Crack-Radial             | 4      |              |            |                |       |              |
| 32                                 |             | 100.0 | Quad 4 / U-Lt       | Crack-Radial             | 1      |              | 0.001      | 1              | 0     | 0.001        |
| 33                                 |             | 103.0 | Crown               | Crack-Radial             | 3      |              |            |                |       | 0.000        |

8-4

# Television Inspection Master Report

9/5/2003  
11:24:41AM  
C07A

US Manhole: 5347-569  
DS Manhole: 5347-568

361 N ATHENIAN AVE  
331 N ATHENIAN

Date Insp: 5/29/2002

Basin:

|   |       |                     |                      |   |       |   |    |       |
|---|-------|---------------------|----------------------|---|-------|---|----|-------|
| 34  | 105.0 | Crown               | Crack-Radial         | 3 | 0.004 | 5 | 0  | 0.004 |
| 35  | 107.0 | East                | Wye Service          | 1 | 0.000 | 0 | 0  | 0.000 |
| E. WYE SEALED.  |       |                     |                      |   |       |   |    |       |
| 36  | 108.0 | Quad 2 / L-Rt       | Crack-Radial         | 1 | 0.001 | 1 | 0  | 0.001 |
| 37  | 113.0 | Crown               | Crack-Radial         | 1 | 0.001 | 1 | 0  | 0.001 |
| 38  | 115.0 | East                | Break-In Conn        | 1 | 0.001 | 0 | 0  | 0.001 |
| TILE BROKE--OUT AROUND E. BRAKE IN CONN. 337 N. ATHENIAN                    |       |                     |                      |   |       |   |    |       |
| 39  | 118.0 | Quad 1 / U-Rt       | Crack-Radial         | 1 |       |   |    |       |
| 40  | 127.0 | Invert              | Broken Pipe          | 5 |       |   |    |       |
| 41  | 128.0 | Crown               | Crack-Radial         | 3 |       |   |    |       |
| 42  | 133.0 | East                | Wye Service / sealed | 1 | 0.000 | 0 | 0  | 0.000 |
| 43  | 134.0 | Quad 3 / L-Lt       | Crack-Radial         | 1 | 0.001 | 1 | 0  | 0.001 |
| 44  | 139.0 | Quad 4 / U-Lt       | Crack-Radial         | 1 |       |   |    | 0.000 |
| 45  | 147.0 | Quad 4 / U-Lt       | Crack-Radial         | 1 | 0.001 | 1 | 0  | 0.001 |
| 46  | 150.0 | Crown               | Crack-Radial         | 3 |       |   |    | 0.000 |
| 47  | 152.0 | Crown               | Crack-Radial         | 1 |       |   |    |       |
| 48  | 155.0 | Crown               | Crack-Radial         | 1 | 0.001 | 1 | 0  | 0.001 |
| 49  | 158.0 | Crown               | Crack-Radial         | 1 | 0.001 | 1 | 0  | 0.001 |
| 50  | 159.0 | East                | Wye Service / sealed | 1 | 0.000 | 0 | 0  | 0.000 |
| 51  | 163.0 | Quad 1 / U-Rt       | Crack-Radial         | 1 |       |   |    |       |
| 52  | 166.0 | Crown               | Crack-Radial         | 3 |       |   |    |       |
| 53  | 168.0 | Invert              | Debris / LOOSE TILE  | 4 | 0.000 | 0 | 25 | 0.000 |
| 54  | 168.0 | Crown               | Crack-Radial         | 1 |       |   |    |       |
| 55  | 172.0 | East                | Break-In Conn        | 1 | 0.001 | 0 | 0  | 0.001 |
| TILE BROKE AROUND E. CONN. 331 N. ATHENIAN – NEED TO REPLACE THE CONNECTION |       |                     |                      |   |       |   |    |       |
| 56  | 173.0 | Quad 2 / L-Rt       | Crack-Radial         | 1 | 0.001 | 1 | 0  | 0.001 |
| 57  | 185.0 | East                | Wye Service          | 1 | 0.000 | 0 | 0  | 0.000 |
| E. WYE SEALED.  |       |                     |                      |   |       |   |    |       |
| 58  | 186.0 | Quad 4 / U-Lt       | Crack-Radial         | 4 |       |   |    |       |
| 59  | 189.0 | DS Manhole 5347-568 |                      |   |       |   |    |       |

8-5

# Television Inspection Master Report

9/5/2003  
11:24:41AM

US Manhole: 5347-568  
DS Manhole: 5347-567

331 N ATHENIAN  
319 N ATHENIAN

Date Insp: 5/29/2002

Basin: C07A

Dir Televised: Upstream To Downstream

## Pipe Information

|                  |          |                |              |          |
|------------------|----------|----------------|--------------|----------|
| Shape:           | Round    | Length Status: | Project No.: | B-164    |
| Dia/Ht Width:    | 8 0      | Material:      | VCP          | Index:   |
| Length:          | 179.5    | Slope:         | 0.100        | Surface: |
| Pipe Sec Length: | Comment: |                |              |          |

## Inspection Information

|               |                |               |                  |                |        |
|---------------|----------------|---------------|------------------|----------------|--------|
| Crew:         | 694            | Percent Full: | 10               | Tape ID:       | V-3385 |
| Weather:      | Sunny          | Purpose:      | TV Existing Line | Counter Start: | 41.57  |
| Surface Cond: | Trees & Fences | Flow:         | Normal Flow      | Counter Stop:  |        |
| Dyed Test:    | No             |               |                  |                |        |

| Obs. #                         | VTR Counter Comment | Dist | Location            | Description      | Rating | Obsrvd (gpm) | Est. (gpm) | Ratings |       |              |
|--------------------------------|---------------------|------|---------------------|------------------|--------|--------------|------------|---------|-------|--------------|
|                                |                     |      |                     |                  |        |              |            | Struct  | Clean | Remain (gpm) |
| 1                              |                     | 0.0  | US Manhole 5347-568 |                  |        |              |            |         |       |              |
| 2                              |                     | 2.0  | Crown               | Crack-Radial     | 1      |              | 0.001      | 1       | 0     | 0.001        |
| 3                              |                     | 4.0  | West                | Break-In Conn    | 1      |              |            |         |       | 0.000        |
| 2223 E. WILMA                  |                     |      |                     |                  |        |              |            |         |       |              |
| 4                              |                     | 7.0  | Quad 4 / U-Lt       | Crack-Radial     | 1      |              |            |         |       |              |
| 5                              |                     | 10.0 | Quad 1 / U-Rt       | Crack-Radial     | 1      |              | 0.001      | 1       | 0     | 0.001        |
| 6                              |                     | 13.0 | Quad 2 / L-Rt       | Broken Pipe      | 3      |              |            |         |       |              |
| 7                              |                     | 15.0 | Crown               | Crack-Radial     | 1      |              | 0.001      | 1       | 0     | 0.001        |
| 8                              |                     | 18.0 | Quad 2 / L-Rt       | Crack-Horizontal | 1      |              |            |         |       | 0.000        |
| 9                              |                     | 20.0 | Crown               | Crack-Radial     | 1      |              | 0.001      | 1       | 0     | 0.001        |
| 10                             |                     | 23.0 | Crown               | Crack-Radial     | 1      |              | 0.001      | 1       | 0     | 0.001        |
| 11                             |                     | 26.0 | Crown               | Crack-Radial     | 1      |              | 0.001      | 1       | 0     | 0.001        |
| 12                             |                     | 27.0 | East                | Wye Service      | 1      |              | 0.000      | 0       | 0     | 0.000        |
| E. WYE SEALED.                 |                     |      |                     |                  |        |              |            |         |       |              |
| 13                             |                     | 29.0 | Quad 1 / U-Rt       | Crack-Horizontal | 1      |              | 0.001      | 1       | 0     | 0.001        |
| 14                             |                     | 31.0 | Crown               | Crack-Radial     | 1      |              | 0.001      | 1       | 0     | 0.001        |
| 15                             |                     | 33.0 | Crown               | Crack-Radial     | 3      |              |            |         |       | 0.000        |
| 16                             |                     | 36.0 | Crown               | Crack-Radial     | 1      |              | 0.001      | 1       | 0     | 0.001        |
| 17                             |                     | 39.0 | Quad 4 / U-Lt       | Crack-Radial     | 4      |              |            |         |       | 0.000        |
| 18                             |                     | 41.0 | Crown               | Crack-Radial     | 1      |              | 0.001      | 1       | 0     | 0.001        |
| 19                             |                     | 44.0 | Crown               | Crack-Radial     | 1      |              | 0.001      | 1       | 0     | 0.001        |
| 20                             |                     | 47.0 | Quad 1 / U-Rt       | Crack-Radial     | 1      |              | 0.001      | 1       | 0     | 0.001        |
| 21                             |                     | 49.0 | Crown               | Crack-Radial     | 1      |              | 0.001      | 1       | 0     | 0.001        |
| 22                             |                     | 53.0 | East                | Wye Service      | 1      |              | 0.000      | 0       | 0     | 0.000        |
| ROOTS IN CONN. 329 N. ATHENIAN |                     |      |                     |                  |        |              |            |         |       |              |
| 23                             |                     | 54.0 | Quad 4 / U-Lt       | Crack-Radial     | 4      |              |            |         |       |              |
| 24                             |                     | 57.0 | Quad 1 / U-Rt       | Crack-Radial     | 1      |              | 0.001      | 1       | 0     | 0.001        |
| 25                             |                     | 60.0 | Quad 4 / U-Lt       | Crack-Horizontal | 1      |              | 0.001      | 1       | 0     | 0.001        |
| 26                             |                     | 62.0 | Quad 2 / L-Rt       | Crack-Radial     | 1      |              | 0.001      | 1       | 0     | 0.001        |
| 27                             |                     | 65.0 | Quad 2 / L-Rt       | Crack-Radial     | 1      |              | 0.001      | 1       | 0     | 0.001        |
| 28                             |                     | 67.0 | Crown               | Crack-Radial     | 3      |              |            |         |       | 0.000        |
| 29                             |                     | 70.0 | Invert              | Crack-Horizontal | 2      |              |            |         |       |              |
| 30                             |                     | 74.0 | East                | Wye Service      | 1      |              | 0.000      | 0       | 0     | 0.000        |
| E. WYE SEALED.                 |                     |      |                     |                  |        |              |            |         |       |              |
| 31                             |                     | 75.0 | Crown               | Crack-Radial     | 1      |              | 0.001      | 1       | 0     | 0.001        |
| 32                             |                     | 78.0 | Crown               | Crack-Radial     | 4      |              |            |         |       | 0.000        |

8-6

# Television Inspection Master Report

9/5/2003  
11:24:41AM

US Manhole: 5347-568                      331 N ATHENIAN                      Date Insp: 5/29/2002                      Basin: C07A  
DS Manhole: 5347-567                      319 N ATHENIAN

|   |       |                     |                          |   |       |   |   |       |
|---|-------|---------------------|--------------------------|---|-------|---|---|-------|
| 33  | 79.0  | East                | Break-In Conn            | 1 | 0.001 | 0 | 0 | 0.001 |
| <b>ROOTS / POSSIBLY 323 N. ATHENIAN</b>               |       |                     |                          |   |       |   |   |       |
| 34  | 80.0  | Quad 1 / U-Rt       | Crack-Radial             | 1 | 0.001 | 1 | 0 | 0.001 |
| 35  | 83.0  | Crown               | Crack-Radial             | 1 |       |   |   | 0.000 |
| 36  | 86.0  | Joint               | Roots                    | 1 | 0.002 | 1 | 1 | 0.002 |
| 37  | 89.0  | Quad 4 / U-Lt       | Crack-Radial             | 1 | 0.001 | 1 | 0 | 0.001 |
| 38  | 91.0  | Quad 4 / U-Lt       | Crack-Radial             | 4 |       |   |   | 0.000 |
| 39  | 94.0  | Crown               | Crack-Radial             | 1 |       |   |   |       |
| 40  | 96.0  | Crown               | Break-In Conn            | 1 | 0.001 | 0 | 0 | 0.001 |
| <b>TAP IN TOP OF LINE? / POSSIBLY 323 N. ATHENIAN</b> |       |                     |                          |   |       |   |   |       |
| 41  | 96.0  | Quad 2 / L-Rt       | Crack-Radial             | 1 | 0.001 | 1 | 0 | 0.001 |
| 42  | 98.0  | West                | Break-In Conn            | 1 | 0.001 | 0 | 0 | 0.001 |
| <b>2223 E. MARTHA</b>                                 |       |                     |                          |   |       |   |   |       |
| 43  | 99.0  | Crown               | Crack-Radial             | 1 | 0.001 | 1 | 0 | 0.001 |
| 44  | 101.0 | East                | Wye Service / sealed off | 1 | 0.000 | 0 | 0 | 0.000 |
| 45  | 102.0 | Crown               | Crack-Radial             | 1 |       |   |   | 0.000 |
| 46  | 112.0 | Invert              | Sag / 25% flow           |   |       |   |   |       |
| 47  | 112.0 | Crown               | Crack-Radial             | 1 | 0.001 | 1 | 0 | 0.001 |
| 48  | 115.0 | Crown               | Crack-Radial             | 1 | 0.001 | 1 | 0 | 0.001 |
| 49  | 120.0 | Crown               | Crack-Radial             | 1 | 0.001 | 1 | 0 | 0.001 |
| 50  | 123.0 | Crown               | Crack-Radial             | 1 |       |   |   | 0.000 |
| 51  | 126.0 | Quad 4 / U-Lt       | Crack-Radial             | 1 | 0.001 | 1 | 0 | 0.001 |
| 52  | 133.0 | Crown               | Crack-Radial             | 1 |       |   |   | 0.000 |
| 53  | 136.0 | Crown               | Crack-Radial             | 1 | 0.001 | 1 | 0 | 0.001 |
| 54  | 137.0 | East                | Extended Tap             | 1 |       |   |   | 0.000 |
| <b>319 N. ATHENIAN</b>                                |       |                     |                          |   |       |   |   |       |
| 55  | 145.0 | Quad 2 / L-Rt       | Crack-Horizontal         | 1 | 0.001 | 1 | 0 | 0.001 |
| 56  | 147.0 | Quad 3 / L-Lt       | Crack-Radial             | 1 |       |   |   | 0.000 |
| 57  | 157.0 | Invert              | Crack-Radial             | 1 |       |   |   |       |
| 58  | 165.0 | Quad 1 / U-Rt       | Crack-Radial             | 1 |       |   |   |       |
| 59  | 171.0 | Crown               | Crack-Radial             | 3 |       |   |   |       |
| 60  | 177.0 | Quad 4 / U-Lt       | Crack-Radial             | 1 | 0.001 | 1 | 0 | 0.001 |
| 61  | 180.0 | DS Manhole 5347-567 |                          |   |       |   |   |       |

**NOTE:**

Pipe lining Contractor will verify which ball of roots is really the connection for 323 N Athenian, as part of 2003 SS Rehab Project Phase E.

After they pinpoint the connection, it can be scheduled for replacement with this project.

**8-7**

# Television Inspection Master Report

9/5/2003  
11:24:41AM

**US Manhole:** 5347-581                      319 N ATHENIAN                      **Date Insp:** 5/31/2002                      **Basin:** C07A  
**DS Manhole:** 5347-567                      319 N ATHENIAN  
**Dir Televised:** Upstream To Downstream

**Pipe Information**

Shape: Round                      Length Status:                      Project No.: B-160  
Dia/Ht Width: 8                      0                      Material: VCP                      Index:  
Length: 108.0                      Slope: 0.098                      Surface:  
Pipe Sec Length:                      Comment:

**Inspection Information**

Crew: 694                      Percent Full: 5                      Tape ID: V-3385  
Weather: Sunny                      Purpose: TV Existing Line                      Counter Start: 1;53.40  
Surface Cond: Trees & Fences                      Flow: Normal Flow                      Counter Stop:  
Dyed Test: No

| Obs. #   | VTR Counter Comment | Dist  | Location      | Description  | Rating | Obsrvd (gpm) | Est. (gpm) | Ratings Struct | Clean | Remain (gpm) |
|--|---------------------|-------|---------------|--------------|--------|--------------|------------|----------------|-------|--------------|
| 1  |                     | 0.0   | US Manhole    | 5347-581     |        |              |            |                |       |              |
| 2  |                     | 10.0  | Joint         | Roots        | 2      |              |            |                |       |              |
| 3  |                     | 12.0  | South         | Extended Tap | 3      |              | 0.002      | 2              | 0     | 0.002        |
| Tap is jagged & rough. Contractor needs to blade it down smoother prior to lining.<br>Contractor to verify if this is connection for 2202 W. 2 <sup>nd</sup> or not. |                     |       |               |              |        |              |            |                |       |              |
| 4  |                     | 15.0  | Joint         | Roots        | 2      |              | 0.004      | 2              | 4     | 0.004        |
| 5  |                     | 26.0  | Joint         | Roots        | 2      |              | 0.004      | 2              | 4     | 0.004        |
| 6  |                     | 29.0  | Joint         | Roots        | 2      |              | 0.004      | 2              | 4     | 0.004        |
| 7  |                     | 37.0  | Joint         | Roots        | 2      |              |            |                |       | 0.000        |
| 8  |                     | 38.0  | North         | Wye Service  | 3      |              |            |                |       |              |
| <b>319 N. ATHENIAN / PACKED WITH ROOTS / NEED TO REPLACE CONNECTION</b>  |                     |       |               |              |        |              |            |                |       |              |
| 9  |                     | 39.0  | Quad 1 / U-Rt | Crack-Radial | 1      |              | 0.001      | 1              | 0     | 0.001        |
| 10   |                     | 41.0  | South         | Wye Service  | 3      |              | 0.000      | 2              | 0     | 0.000        |
| <b>2202 E. 2<sup>ND</sup> / PACKED WITH ROOTS / NEED TO REPLACE CONNECTION</b>   |                     |       |               |              |        |              |            |                |       |              |
| 11   |                     | 47.0  | Crown         | Crack-Radial | 4      |              | 0.008      | 10             | 0     | 0.008        |
| 12   |                     | 49.0  | Quad 4 / U-Lt | Crack-Radial | 3      |              | 0.004      | 5              | 0     | 0.004        |
| 13   |                     | 55.0  | Crown         | Crack-Radial | 3      |              |            |                |       | 0.000        |
| 14   |                     | 57.0  | Crown         | Crack-Radial | 4      |              | 0.008      | 10             | 0     | 0.008        |
| 15   |                     | 66.0  | South         | Pipe Seal    |        |              |            |                |       | 0.000        |
| 16   |                     | 72.0  | Crown         | Crack-Radial | 5      |              | 0.010      | 18             | 0     | 0.010        |
| 17   |                     | 78.0  | Crown         | Crack-Radial | 1      |              | 0.001      | 1              | 0     | 0.001        |
| 18   |                     | 83.0  | Crown         | Crack-Radial | 1      |              | 0.001      | 1              | 0     | 0.001        |
| 19   |                     | 85.0  | Quad 4 / U-Lt | Crack-Radial | 3      |              | 0.004      | 5              | 0     | 0.004        |
| 20   |                     | 88.0  | Quad 1 / U-Rt | Crack-Radial | 1      |              | 0.001      | 1              | 0     | 0.001        |
| 21   |                     | 92.0  | South         | Pipe Seal    |        |              |            |                |       | 0.000        |
| 22   |                     | 96.0  | Crown         | Crack-Radial | 1      |              | 0.001      | 1              | 0     | 0.001        |
| 23   |                     | 98.0  | Quad 2 / L-Rt | Crack-Radial | 3      |              | 0.004      | 5              | 0     | 0.004        |
| 24   |                     | 103.0 | Crown         | Crack-Radial | 1      |              | 0.001      | 1              | 0     | 0.001        |
| 25   |                     | 108.0 | DS Manhole    | 5347-567     |        |              |            |                |       |              |



Two manholes in the yard of 319 N. Athenian.  
MH 5347-567 is in the foreground at the base of the first tree.  
MH 5347-xxx (to be abandoned) is closer to the fence, where Greg is standing.