

Riser #12, Line 2  
 Lot 22 & 23, Blk 2  
 Dist from Main to Riser: 21' Lt.  
 Dist from US MH: MH

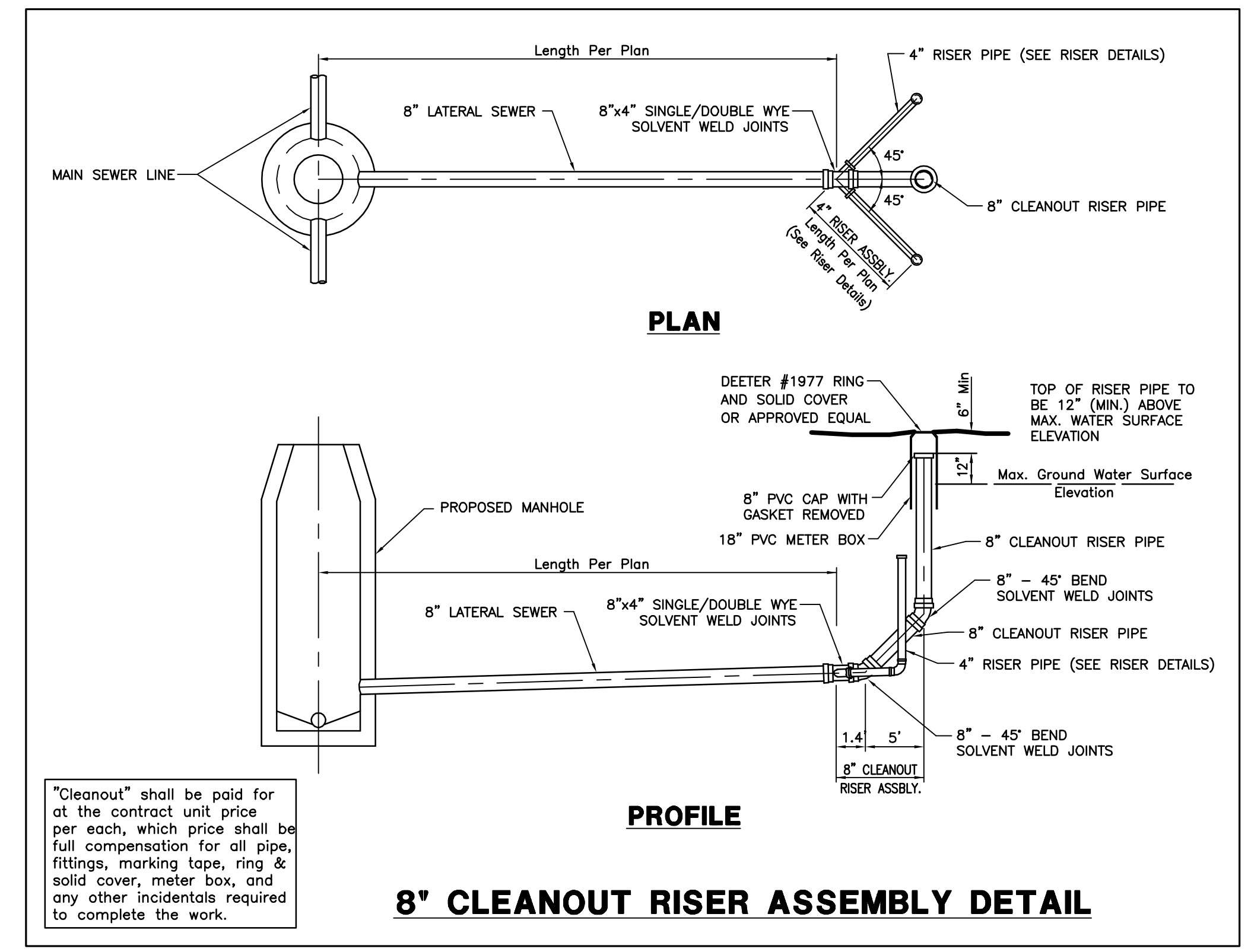
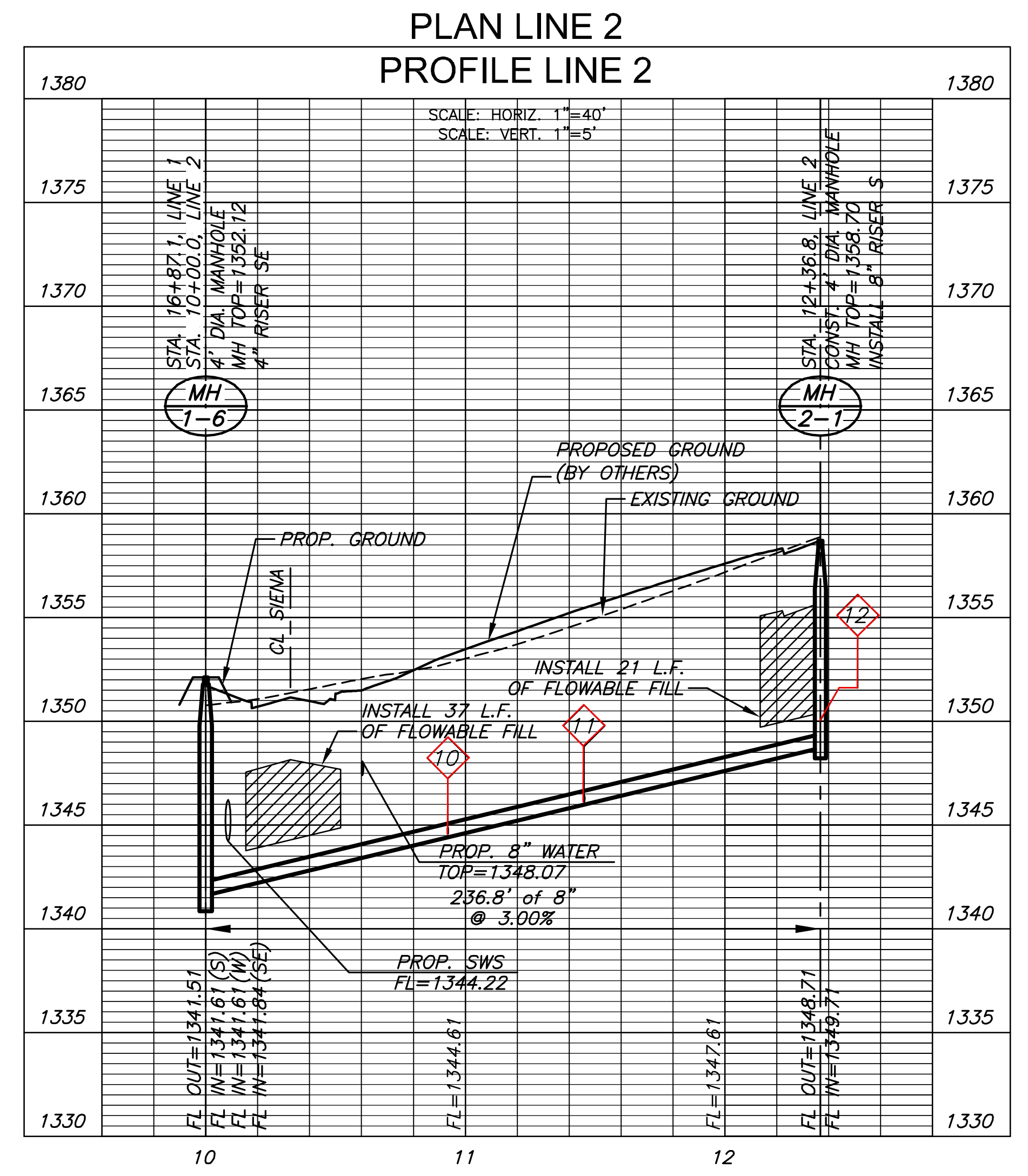
Riser #10, Line 2, Lot 20, Blk 2  
 Dist from Main to Riser: 5' Lt.  
 Dist from US MH: 143.8'  
 Dist from DS MH: 93'

Riser #11, Line 2, Lot 21, Blk 2  
 Dist from Main to Riser: 5' Lt.  
 Dist from US MH: 90.8'  
 Dist from DS MH: 146'

INSTALL 8" CLEANOUT RISER ASSEMBLY. SEE DETAIL THIS SHEET.

**NOTE:**  
 CONTRACTOR TO VERIFY THE DEPTH AND LOCATION OF EXISTING UTILITIES PRIOR TO CONSTRUCTION.

ALL SANITARY SEWER TRENCHES ALONG FRONT OF LOTS SHALL BE SAND BACKFILLED, WATER FLUSHED & MECHANICALLY VIBRATED.



J:\PROJECTS\2013\1301010232\_PERFECTION\_COURTYARDS\_AT\_AUBURNHILLS\CAD\PHASE 1\13202\_B2.DWG

©2013 MKEC Engineering All Rights Reserved  
 www.mkec.com  
 These drawings and their contents, including, but not limited to, all concepts, designs, & ideas are the exclusive property of MKEC Engineering (MKEC), and may not be used or reproduced in any way without the express consent of MKEC.

**LINE 2 PLAN & PROFILE**

PROJECT NO.	468-84917	
DATE	DEC. 2013	
SCALE	1"=40'	
DESIGNED	DRAWN	CHECKED
SPE	BKS	GJA

NO.	REVISION	DATE