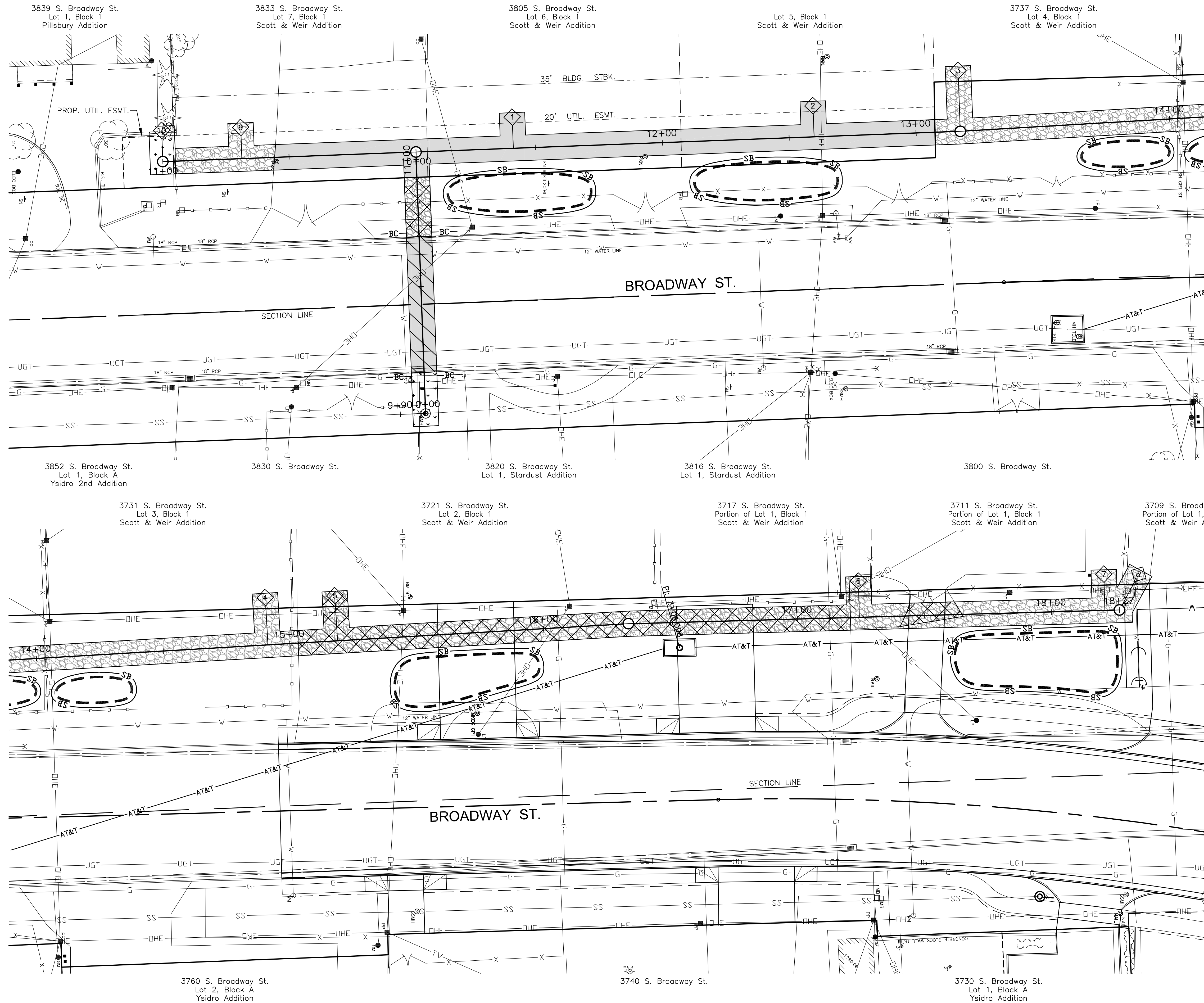
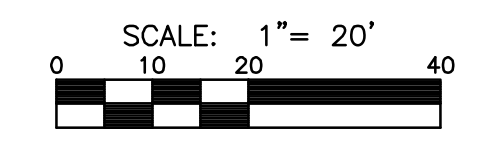
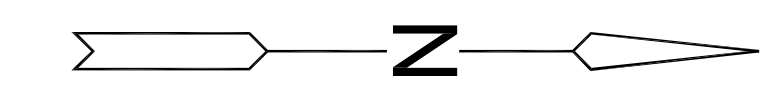


PLOTED: Tuesday, July 22, 2014 @ 03:11PM



NOTES

1. THIS PROJECT WILL DISTURB LESS THAN 1.0 ACRE.
2. REFER TO CITY OF WICHITA STANDARDS FOR BMP INSTALLATION, INSPECTION, AND MAINTENANCE DETAILS AND SPECIFICATIONS.
3. COST FOR EACH EROSION AND SEDIMENT CONTROL ITEM SHALL INCLUDE MAINTENANCE, INSPECTION, AND EVENTUAL REMOVAL. BESIDES KEEPING EACH DEVICE IN WORKING ORDER, MAINTENANCE SHALL INCLUDE, AT A MINIMUM, SEDIMENT REMOVAL BEFORE 50% OF THE DEVICE'S CAPACITY IS REACHED.
4. CONTRACTOR SHALL ADJUST EROSION AND SEDIMENT CONTROL PLANS TO CONFORM TO ACTUAL CONSTRUCTION OPERATIONS. ALL CHANGES TO PLAN SHALL BE APPROVED BY THE CITY.
5. STOCKPILING OF EXCAVATED MATERIAL ON THE PROJECT SITE IS GENERALLY PROHIBITED. SMALL AND INTERIM STOCKPILES NOT IMMEDIATELY HAULED OFF-SITE SHOULD BE ENCLOSED AND PROTECTED WITH SILT BARRIER AROUND THE ENTIRE CIRCUMFERENCE OF THE STOCKPILE. INSTALLING AND MAINTAINING THIS FENCE SHALL BE CONSIDERED SUBSIDIARY TO THE BID ITEM "BMP, SILT FENCE".
6. REFER TO PATCH DETAILS ON "SUMMARY AND RECAPITULATION OF QUANTITIES", SHEET NO. 8.
7. STOCKPILE AREAS SHOWN ARE APPROXIMATE. COORDINATE ACTUAL STOCKPILE AREAS WITH ENGINEER AND PROPERTY OWNERS.



LEGEND

- AREAS FOR SODDING
- BROADWAY PAVEMENT PATCH
- AGGREGATE SURFACING PATCH
- ASPHALT PAVEMENT PATCH
- EXISTING ASPHALT REMOVAL & AGGREGATE SURFACING PATCH
- STOCKPILE LOCATIONS
- BC BACK OF CURB PROTECTION
- SB SILT BARRIER



SANITARY SEWER PLANS FOR
LATERAL 100, MAIN 1
SOUTHWEST INTERCEPTOR SEWER
 CITY OF WICHITA, KANSAS

©2013 MKEC Engineering All Rights Reserved
 www.mkec.com
 These drawings and their contents, including, but not limited to, all concepts, designs, & ideas are the exclusive property of MKEC Engineering (MKEC), and may not be used or reproduced in any way without the express consent of MKEC.

EROSION CONTROL AND SURFACING PLAN

PROJECT NO.	468-84947	
DATE	DATE	
SCALE	1" = 20'	
DESIGNED	DRAWN	CHECKED
DMU	DMU	JAG
NO.	REVISION	DATE
SHEET NO.		