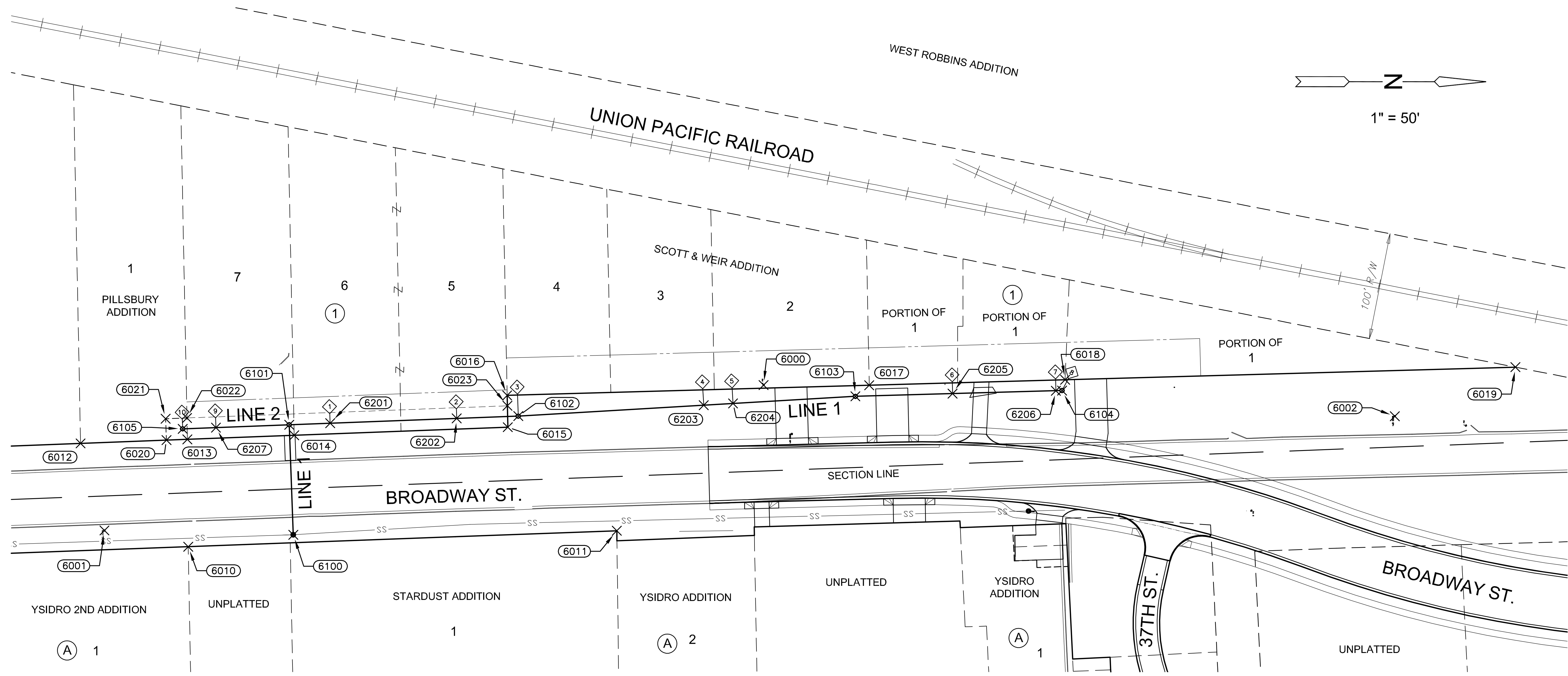


PLOTED: Tuesday, July 22, 2014 @ 08:13PM



CONTROL POINT TABLE			
Point #	Northing	Easting	Desc.
6000	1664207.70	1650053.00	BM 9
6001	1663590.90	1650189.09	MKEC CP 2
6002	1664798.23	1650082.16	MKEC CP 4

R/W POINT TABLE			
Point #	Northing	Easting	Desc.
6010	1663669.29	1650204.31	PL
6011	1664070.35	1650189.36	R/W
6012	1663568.56	1650107.62	PL
6013	1663668.53	1650103.83	PL
6014	1663768.46	1650100.04	PL
6015	1663968.32	1650092.45	R/W
6016	1663967.72	1650062.67	R/W
6017	1664306.50	1650053.19	PL
6018	1664489.78	1650048.06	PL
6019	1664911.16	1650036.27	R/W
6020	1663648.91	1650104.57	UE
6021	1663648.15	1650084.59	UE
6022	1663668.13	1650083.83	UE
6023	1663967.92	1650072.46	UE

SANITARY SEWER POINT TABLE			
Point #	Northing	Easting	Desc.
6100	1663767.60	1650193.12	MH 1-0
6101	1663763.80	1650090.21	MH 1-1
6102	1663978.11	1650082.08	MH 1-2
6103	1664293.55	1650063.56	MH 1-3
6104	1664486.91	1650058.15	MH 1-4
6105	1663664.14	1650093.99	MH 2-1
6201	1663802.12	1650088.75	RISER 1
6202	1663920.53	1650084.26	RISER 2
6203	1664151.69	1650071.89	RISER 4
6204	1664179.06	1650070.28	RISER 5
6205	1664384.52	1650061.01	RISER 6
6206	1664481.18	1650058.31	RISER 7
6207	1663695.24	1650092.81	RISER 9

SECTION CORNER REFERENCE

- E1/4 Cor. Sec. 8, T28S, R1E*
- N = 1665354.88 E = 1650089.88
 - 2" Brass Disc In Broadway Bridge Over Railroad
 - Chiseled "X" on Concrete Hubguard Of Bridge 12.0' NW
 - Chiseled "X" on Concrete Hubguard Of Bridge 12.0' SW
 - East Face Of West Hubguard Of Bridge 8.05' W
 - South End Of Wearing Surface Of Bridge 232.2' S
- SE Cor. Sec. 8, T28S, R1E*
- N = 1662697.57 E = 1650190.71
 - 1/2" Pipe
 - Chiseled "X" on west end of median 41.43' E-NE
 - Chiseled "X" on top of curb 74.69' NE
 - Chiseled "X" on top of curb 76.35' NW
 - Chiseled "X" on top of curb 62.23' SW
 - PK nail in SW side of LP 63.79' SE

EVERY ATTEMPT HAS BEEN MADE TO INSURE ALL COORDINATE VALUES SHOWN ARE AN ACCURATE AND TRUE REPRESENTATION OF THE CURRENT PLANS. ALL VALUES ARE TO BE CONFIRMED WITH THE FINAL SIGNED PLAN SET BEFORE USE.

- NOTES:**
- The Project Horizontal Datum is based on the NAD83, Kansas State Plane Coordinate System, South Zone, (US Survey Feet Definition), with a Combined Adjustment Factor (CAF) of 1.0001200144.

All coordinate and dimensions shown on these plans are modified to Ground values.

The following equations can be used for conversion:
Ground Coordinates to State Plane Coordinates = Ground x 1/CAF
State Plane Coordinates to Ground Coordinates = State Plane x CAF
 - The Vertical Datum used is NAVD88.

SANITARY SEWER PLANS FOR
LATERAL 100, MAIN 1
SOUTHWEST INTERCEPTOR SEWER
 CITY OF WICHITA, KANSAS

©2013 MKEC Engineering All Rights Reserved www.mkec.com
 These drawings and their contents, including, but not limited to, all concepts, designs, & ideas are the exclusive property of MKEC Engineering (MKEC), and may not be used or reproduced in any way without the express consent of MKEC.

BUBBLE MAP

PROJECT NO.	468-84947	
DATE	DATE	
SCALE	1" = 50'	
DESIGNED	DRAWN	CHECKED
DMU	DMU	JRA
NO.	REVISION	DATE
SHEET NO.		
14 OF 21		

\\VICTAS03\VOL7\PROJECTS\2014\140104025\CITY OF WICHITA_SW INTERCEPTOR SEWER\05-CIVIL\CAD\SAN14025SAN.DWG