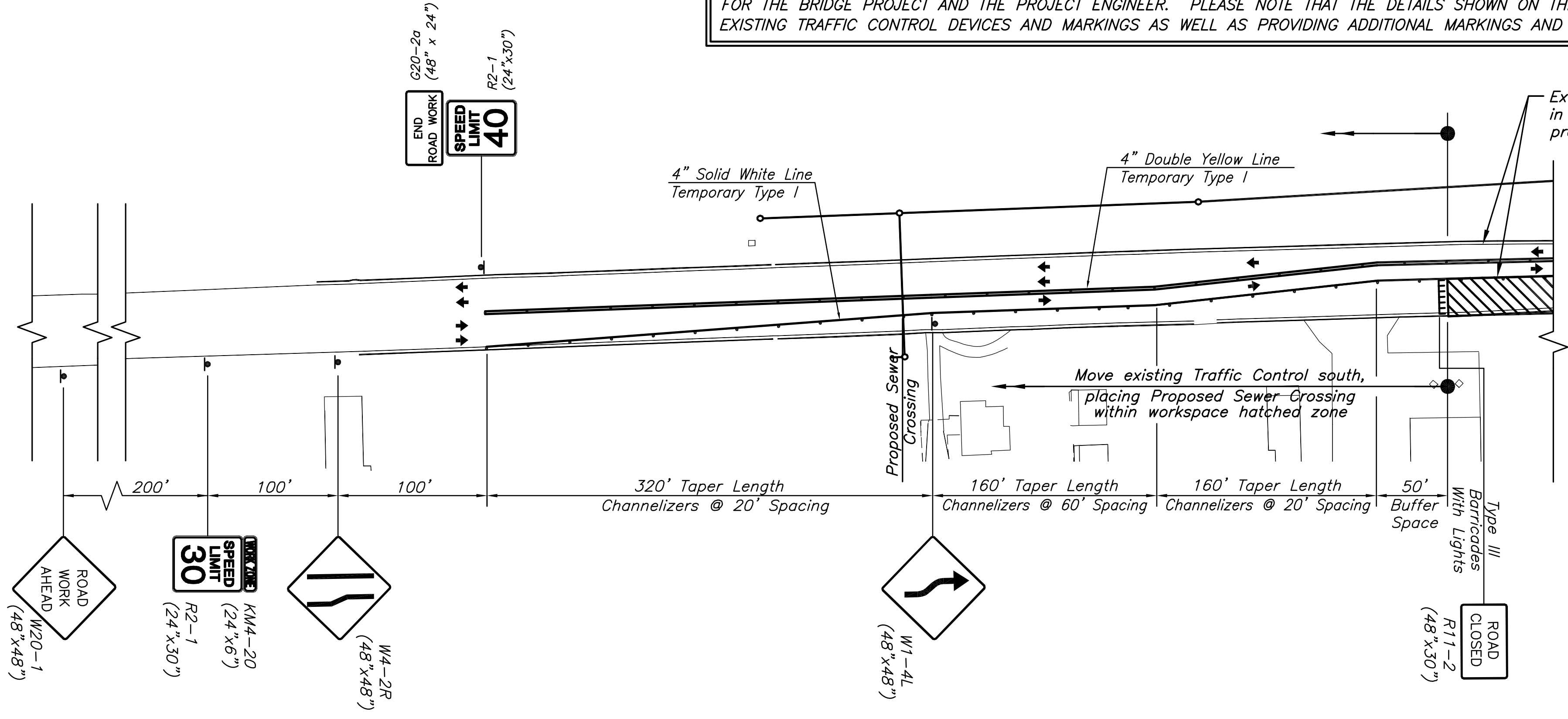
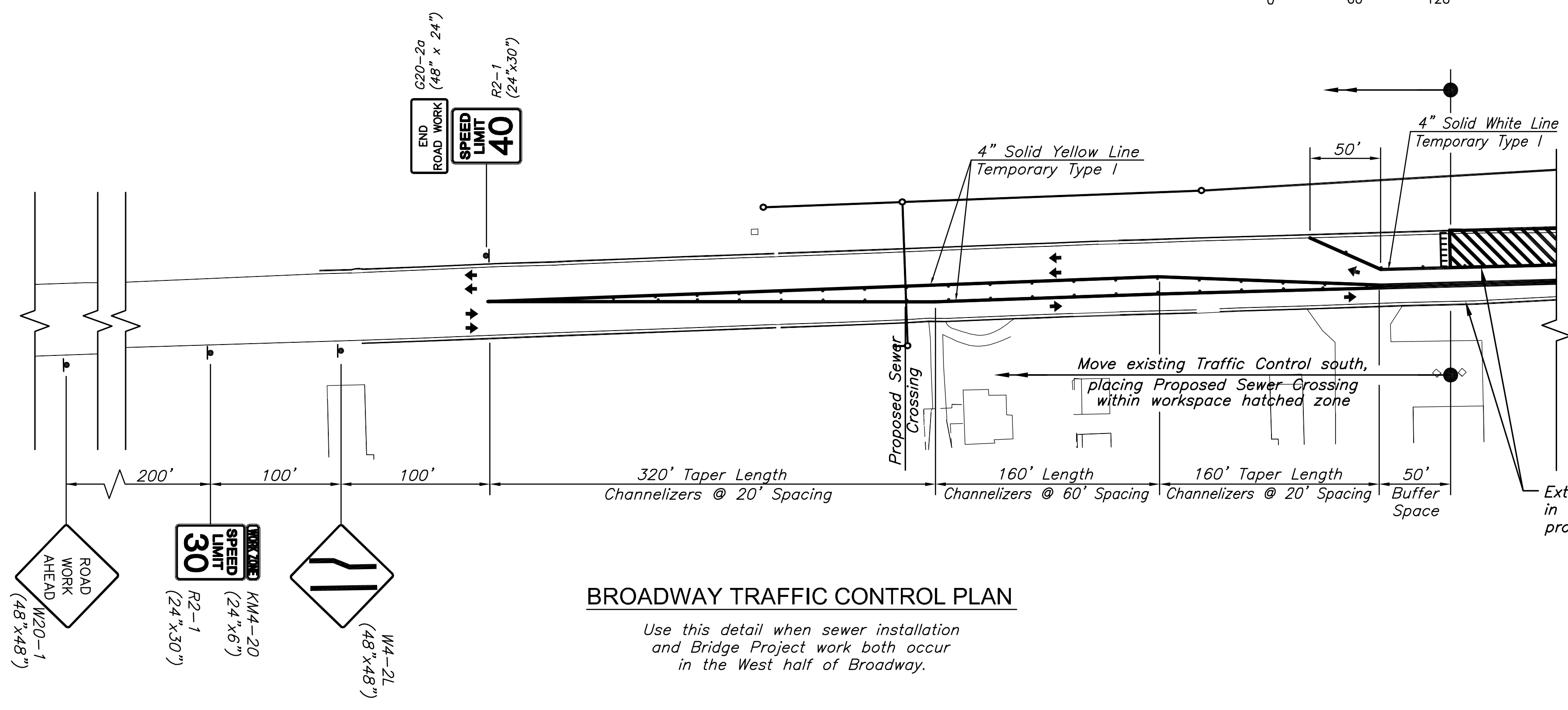


NOTE:
 THIS PROJECT WILL BE CONSTRUCTED CONCURRENTLY WITH THE SOUTH BROADWAY BRIDGE PROJECT (PROJECT NO. 472-84830) CURRENTLY UNDER CONSTRUCTION. THE CONTRACTOR WILL BE RESPONSIBLE FOR COORDINATING TRAFFIC CONTROL WITH THE CONTRACTOR FOR THE BRIDGE PROJECT AND THE PROJECT ENGINEER. PLEASE NOTE THAT THE DETAILS SHOWN ON THIS SHEET INVOLVE RELOCATING EXISTING TRAFFIC CONTROL DEVICES AND MARKINGS AS WELL AS PROVIDING ADDITIONAL MARKINGS AND DEVICES AS INDICATED.



BROADWAY TRAFFIC CONTROL PLAN

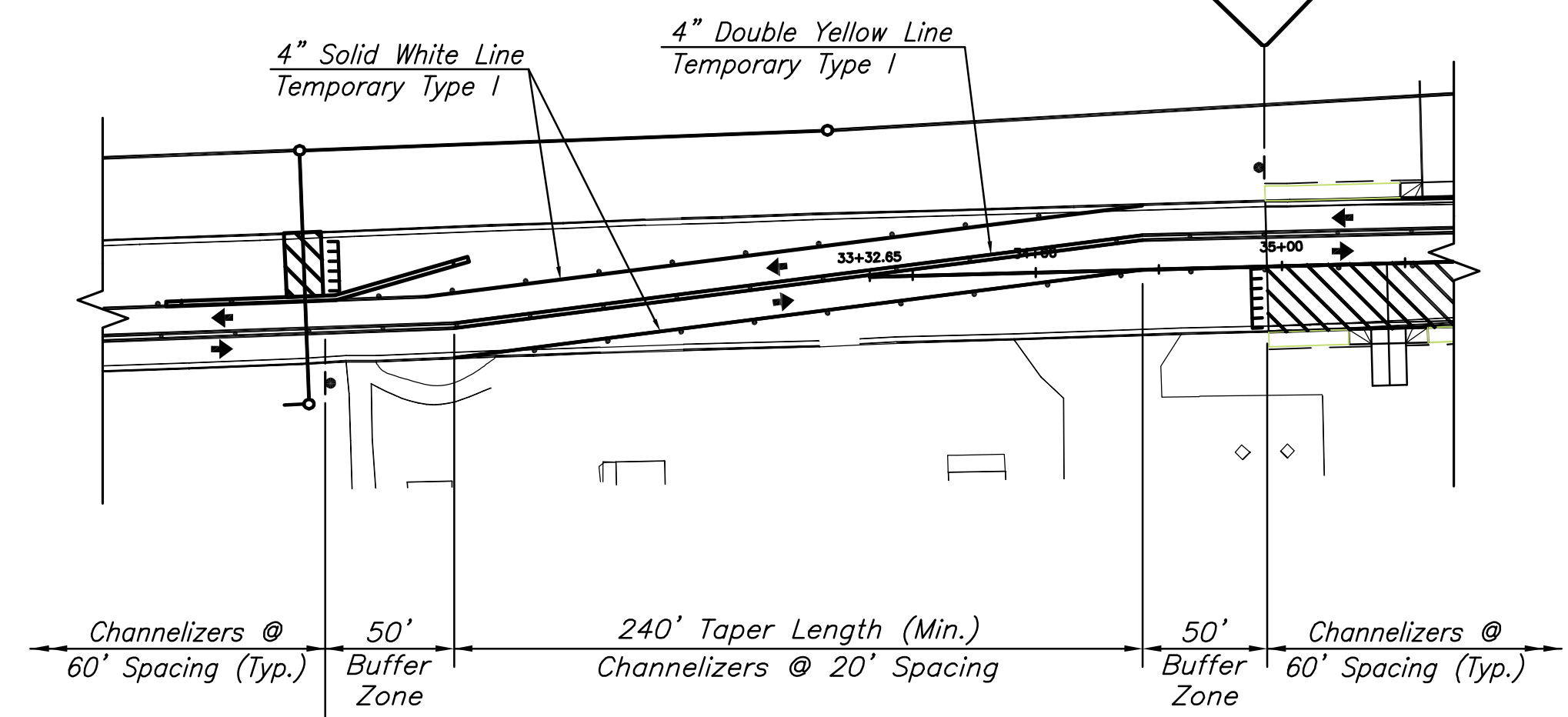
Use this detail when sewer installation and Bridge Project work both occur in the East half of Broadway.



BROADWAY TRAFFIC CONTROL PLAN

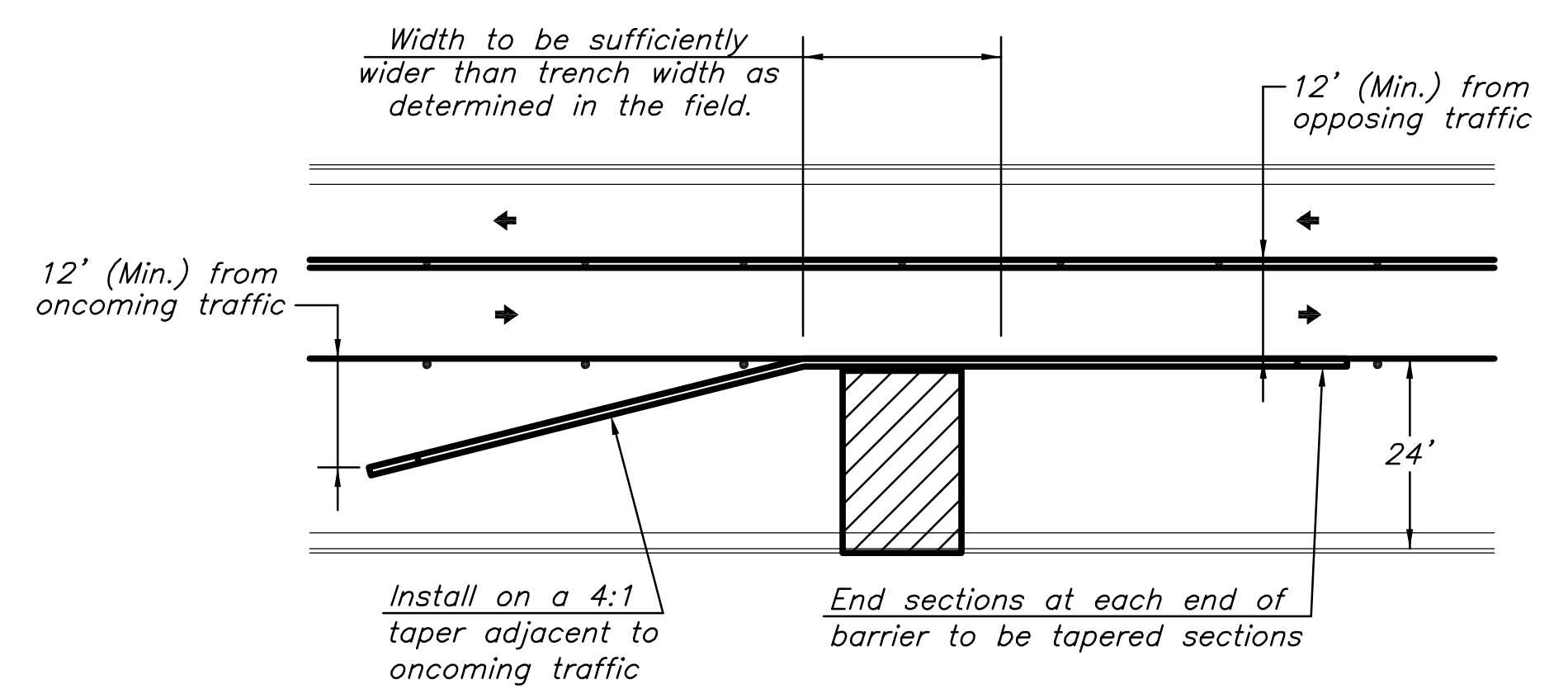
Use this detail when sewer installation and Bridge Project work both occur in the West half of Broadway.

Extend Traffic Control for one lane traffic in each direction as required. Contractor to provide all necessary marking and devices.



TRAFFIC CROSSOVER DETAIL

Use this detail when Sewer installation work is in opposite lanes as Bridge Project work.



TYPICAL CONCRETE SAFETY BARRIER INSTALLATION

Not to Scale

LEGEND

- ▬ Type III Barricades with lights
- Mount On Type III Barricade
- ⊣ One Post Sign
- ⊢ Two Post Sign
- ← Traffic Flow
- ▨ Work Space
- Channelizing Device, See TE702
- Temporary Asphalt Pavement

SANITARY SEWER PLANS FOR
LATERAL 100, MAIN 1
SOUTHWEST INTERCEPTOR SEWER
 CITY OF WICHITA, KANSAS

©2013 MKEC Engineering All Rights Reserved
 www.mkec.com
 These drawings and their contents, including, but not limited to, all concepts, designs, & ideas are the exclusive property of MKEC Engineering (MKEC), and may not be used or reproduced in any way without the express consent of MKEC.

TRAFFIC CONTROL PLAN

PROJECT NO.	468-84947	
DATE	DATE	
SCALE	#"=#	
DESIGNED	DRAWN	CHECKED
DMU	DMU	JAG
NO.	REVISION	DATE
SHEET NO.		