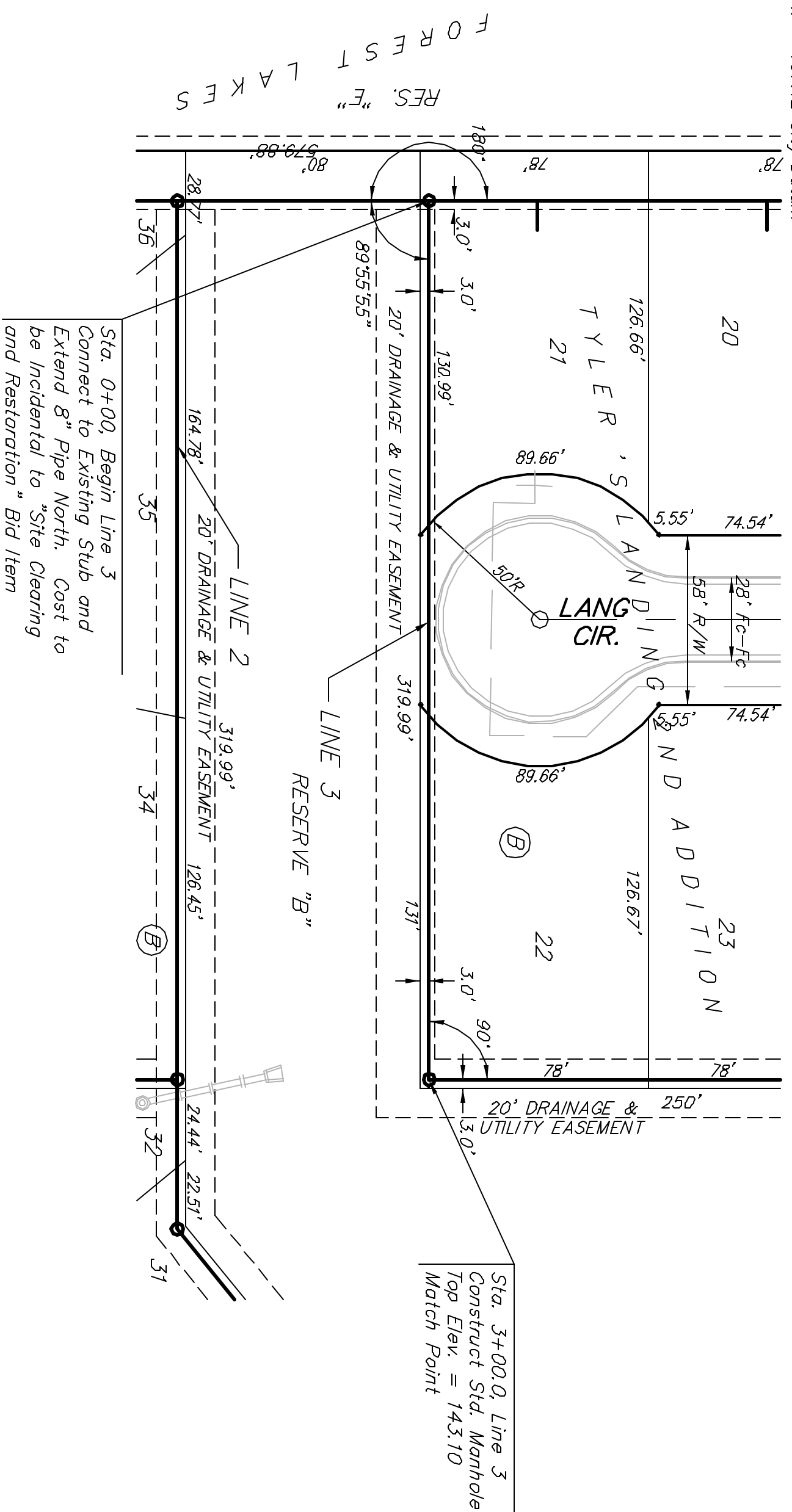


Benchmarks:  
 BM #1: 604' Spike in West face of North High Line Pole in East R/W Tyler Road 1/2 mile of South of 37th Street North. Elev. = 176.05 City Datum  
 BM #2: "Cut Top of Curb on West side of Popper Ridge 15± South of Northeast Corner Lot 23, Block 5, Forest Lakes West Addition". 157.12 City Datum

Scale: 1" = 40' Horizontal  
 1" = 5' Vertical  
 • = Iron

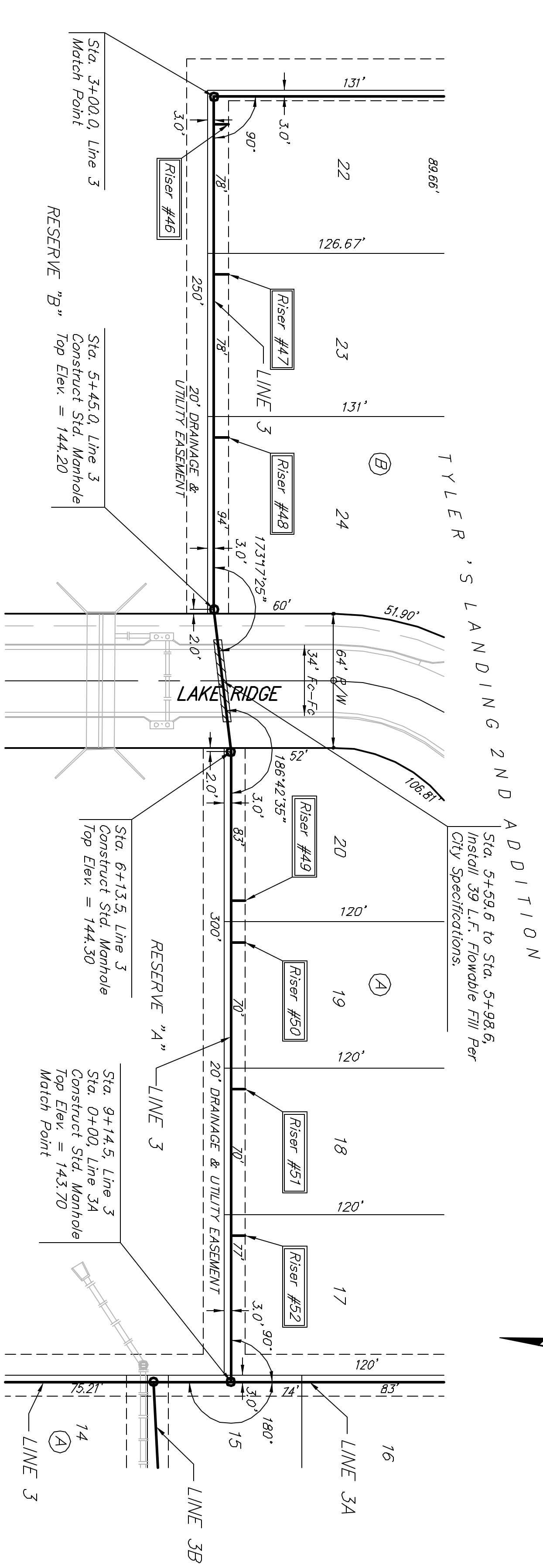


**SEWER SERVICE TABLE**

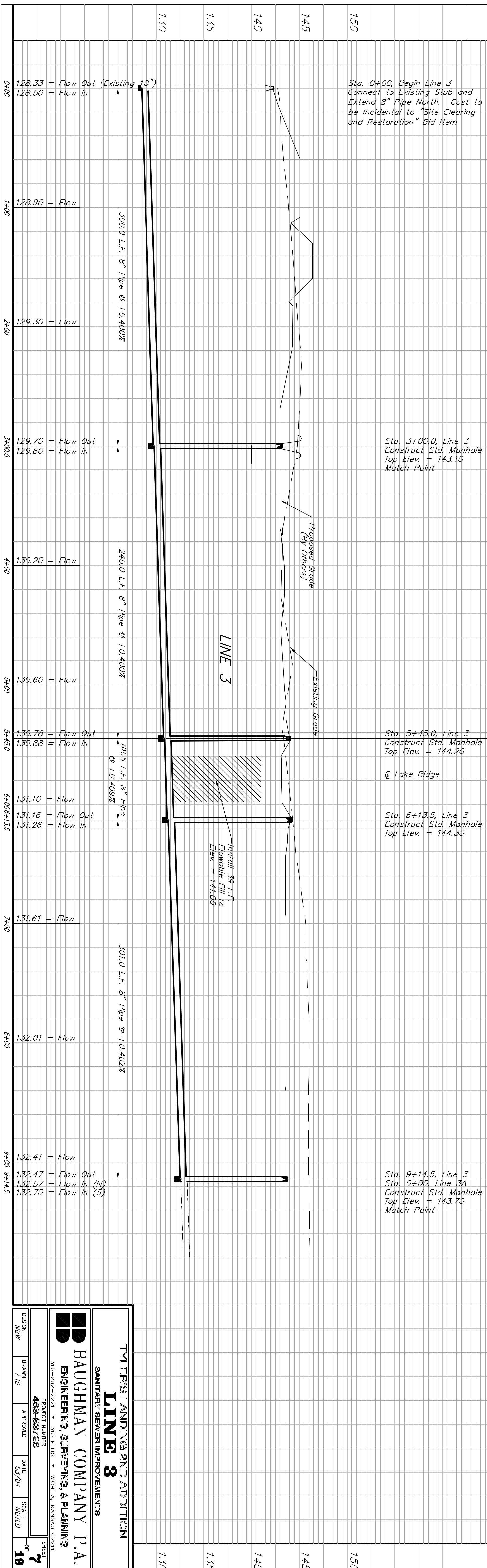
NUMBER	TYPE	LOCATION	FOR INFORMATION ONLY
		LOT BLOCK LINE NO. NO. STATION\ DIRECTION	APPROXIMATE LENGTH 4" PIPE VERTICAL HORIZONTAL
46	8" X 4" Tee Saddle	B 3	9'
47	8" X 4" Tee Saddle	B 3	7'
48	8" X 4" Tee Saddle	B 3	7'

**SEWER SERVICE TABLE**

NUMBER	TYPE	LOCATION	FOR INFORMATION ONLY
		LOT BLOCK LINE NO. NO. STATION\ DIRECTION	APPROXIMATE LENGTH 4" PIPE VERTICAL HORIZONTAL
49	8" X 4" Tee Saddle	A 20	7'
50	8" X 4" Tee Saddle	A 4	7'
51	8" X 4" Tee Saddle	A 3	7'
52	8" X 4" Tee Saddle	A 3	7'



Scale: 1" = 40' Horizontal  
 1" = 5' Vertical  
 • = Iron



**TYLER'S LANDING 2ND ADDITION**  
**LINE 3**  
 SANITARY SEWER IMPROVEMENTS

**BAUGHMAN COMPANY P.A.**  
 ENGINEERING, SURVEYING, & PLANNING

318-282-7271 • 318 EUBS • WICHITA, KANSAS 67231

PROJECT NUMBER: 488-88728  
 DATE: 03/04  
 SCALE: NOTED

DESIGN: MBW  
 DRAWN: A/D  
 SHEET NO. 19