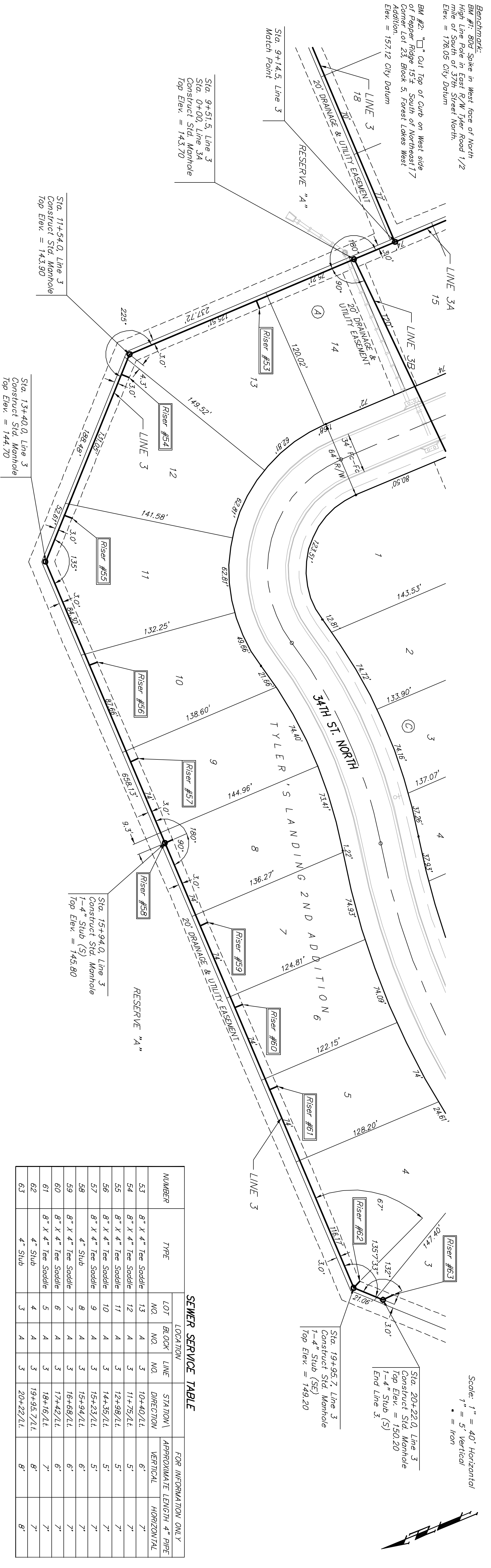
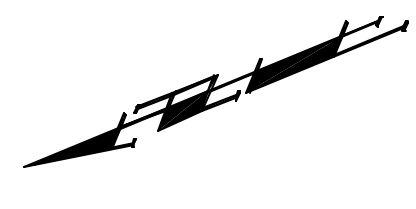


Benchmark: BM #1: Spike in West face of North High Line Pole in East R/W Tyler Road 1/2 mile South of 37th Street North. Elev. = 176.05 City Datum

BM #2: "Cut Top of Curb on West side of Pepper Ridge 15'± South of Northeast 7 Corner Lot 23, Block 5, Forest Lakes West Addition. Elev. = 157.12 City Datum

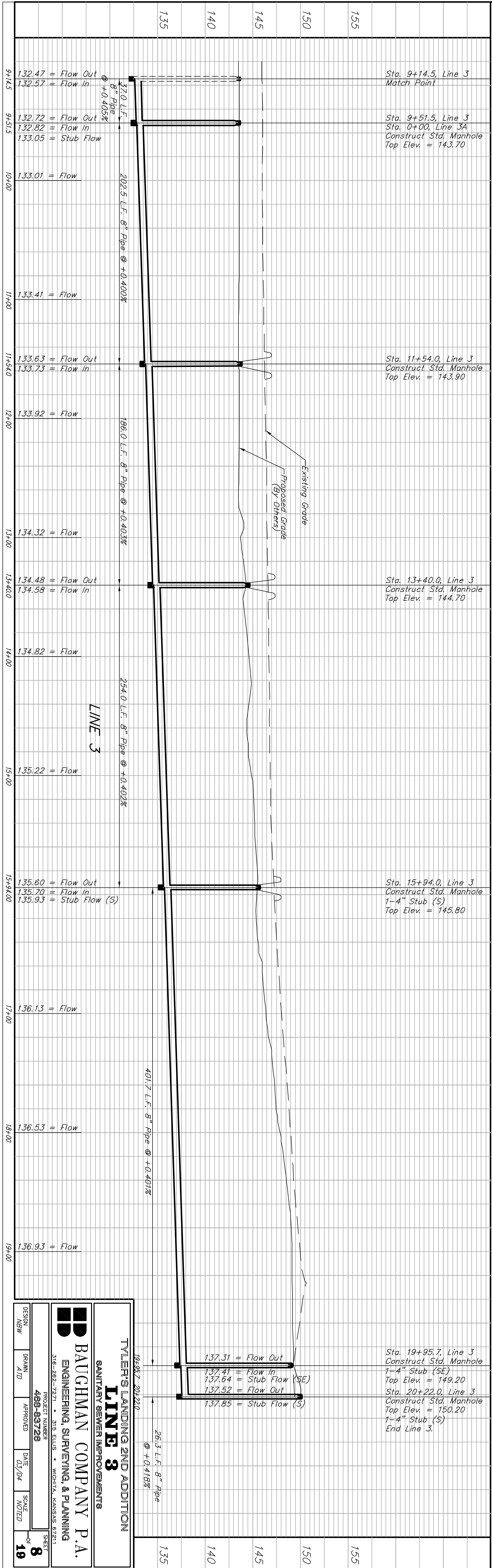


Scale: 1" = 40' Horizontal  
1" = 5' Vertical



SEWER SERVICE TABLE

NUMBER	TYPE	LOCATION			STATION\ DIRECTION	FOR INFORMATION ONLY	
		LOT NO.	BLOCK NO.	LINE NO.		APPROXIMATE LENGTH	VERTICAL
53	8" X 4" Tee Saddle	13	A	3	10+40/L1	6'	7'
54	8" X 4" Tee Saddle	12	A	3	11+75/L1	5'	7'
55	8" X 4" Tee Saddle	11	A	3	12+98/L1	5'	7'
56	8" X 4" Tee Saddle	10	A	3	14+35/L1	5'	7'
57	8" X 4" Tee Saddle	9	A	3	15+23/L1	5'	7'
58	4" Stub	8	A	3	15+94/L1	6'	7'
59	8" X 4" Tee Saddle	7	A	3	16+68/L1	6'	7'
60	8" X 4" Tee Saddle	6	A	3	17+42/L1	6'	7'
61	8" X 4" Tee Saddle	5	A	3	18+16/L1	7'	7'
62	4" Stub	4	A	3	19+95.7/L1	8'	7'
63	4" Stub	3	A	3	20+22/L1	8'	8'



**TYLER'S LANDING 2ND ADDITION**  
SANITARY SEWER IMPROVEMENTS

**BAUGHMAN COMPANY P.A.**  
ENGINEERING, SURVEYING, & PLANNING  
316-282-7271 • 316 ELLIS • WICHITA, KANSAS 67211

PROJECT NUMBER: **488-83726**  
SHEET: **8** OF **19**

DESIGN: **MMW** DRAWN: **ATD** APPROVED: DATE: **03/04** SCALE: **NOTED**