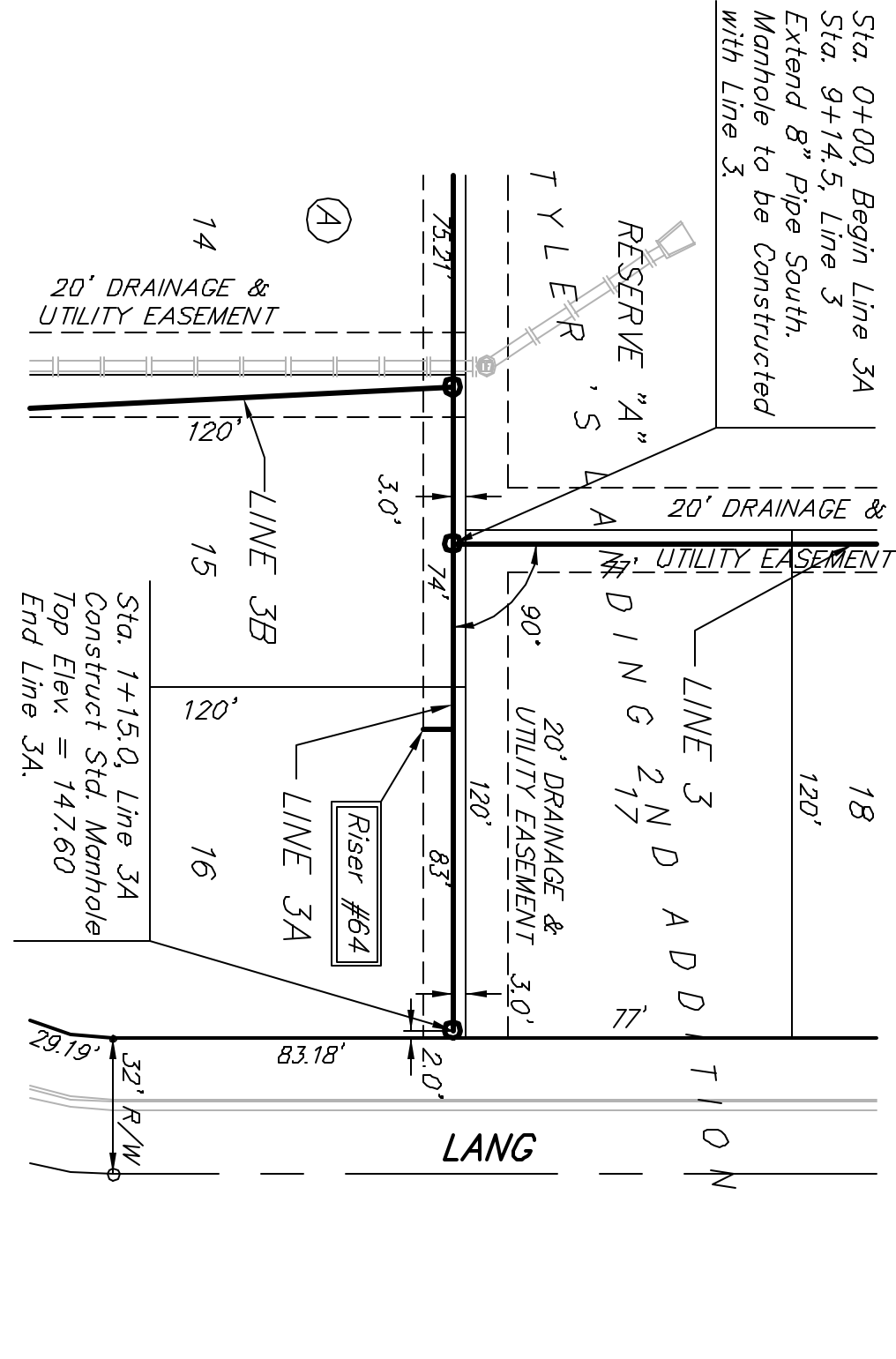
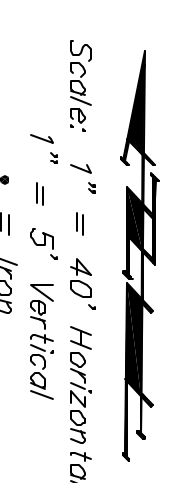
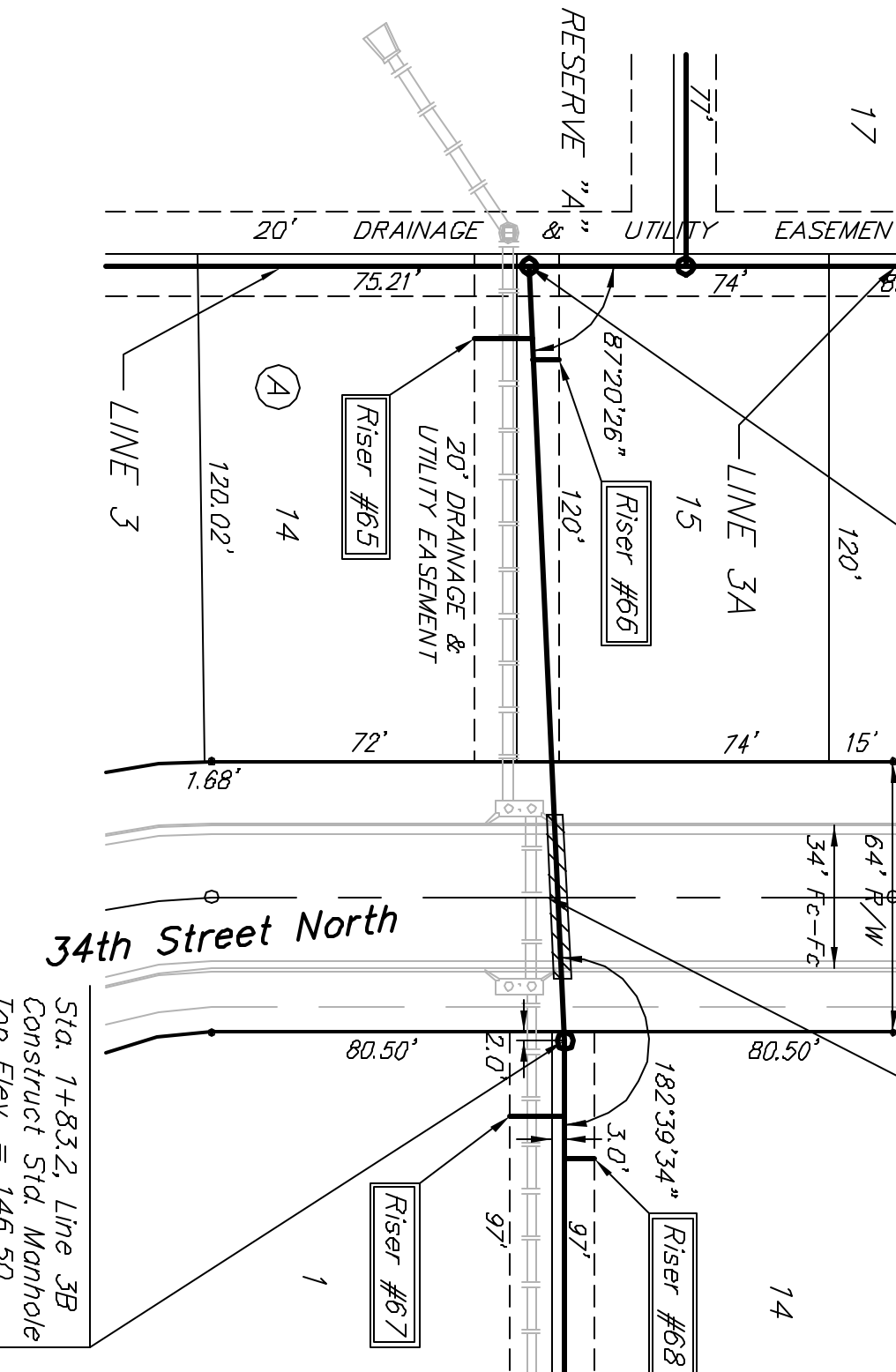


Benchmark:
 BM #: 804 Spike in West face of North
 High Line Pole in East R/W Tyler Road 1/2
 Mile of South of 34th Street North.
 Elev. = 178.05 City Datum

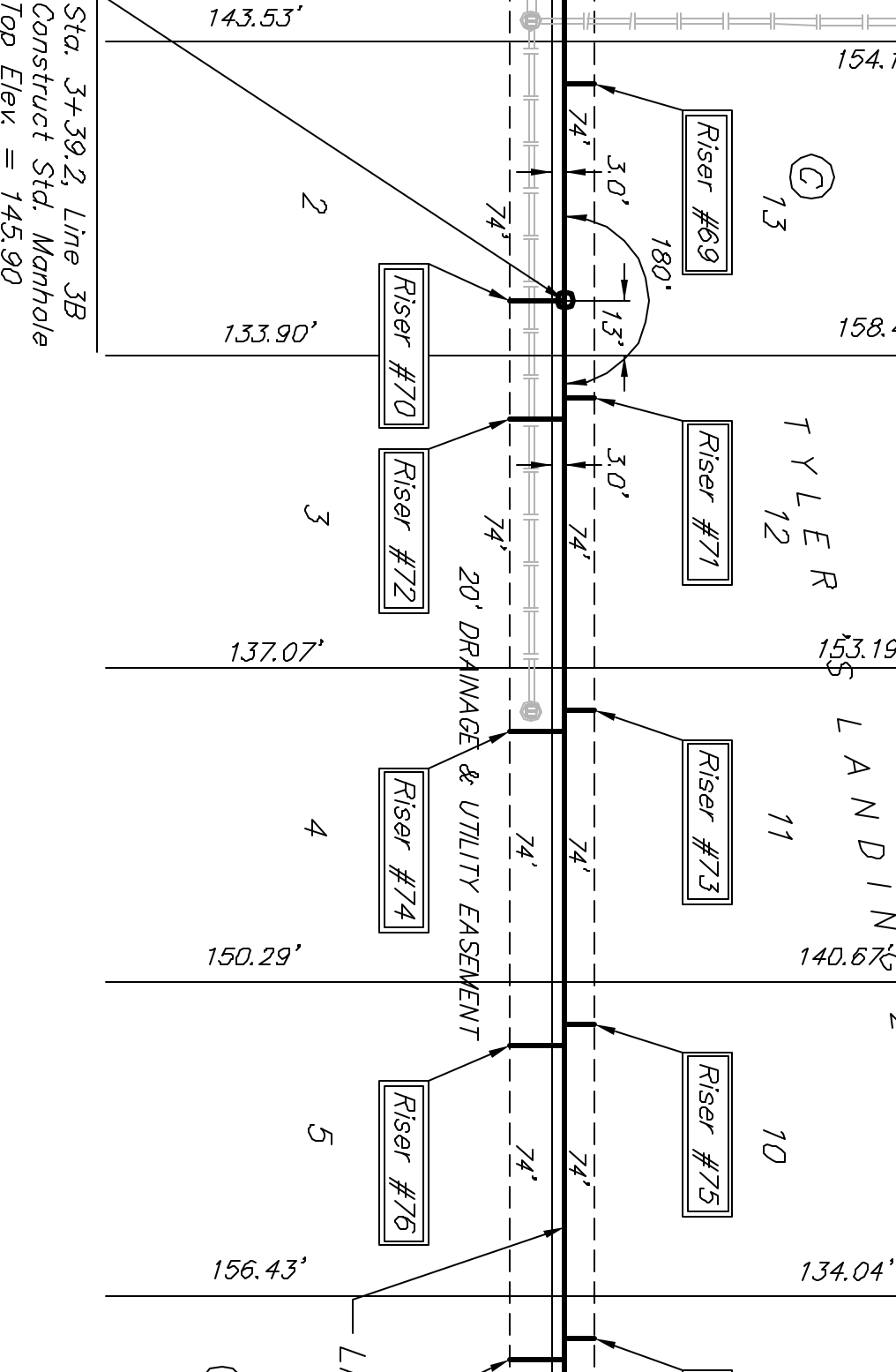
BM #: "C" Cut Top of Curb on West side
 of Popper Ridge 15'± South of Northeast
 Corner Lot 23, Block 5, Forest Lakes West
 Addition.
 Elev. = 152.12 City Datum



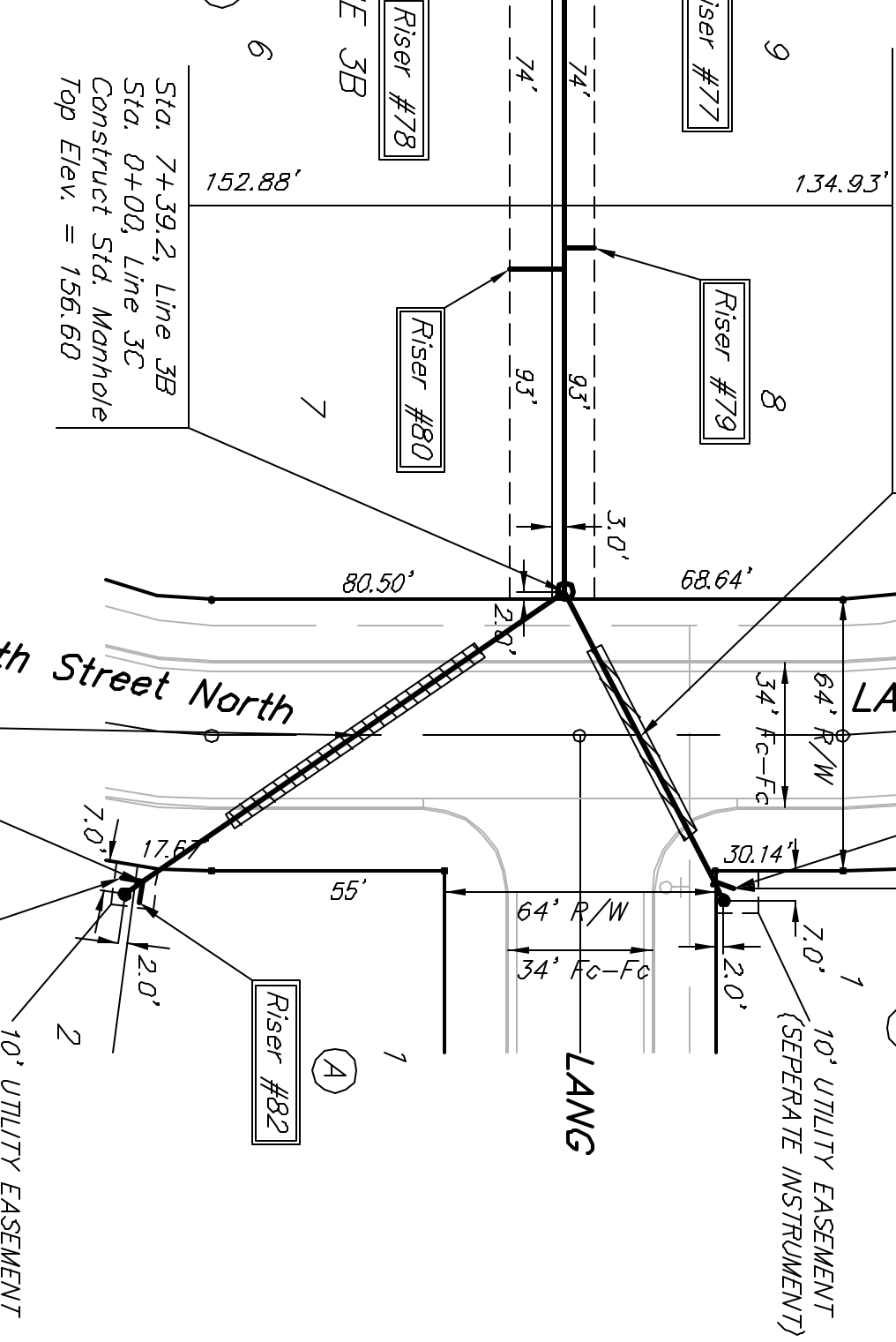
NUMBER	TYPE	LOCATION			FOR INFORMATION ONLY	
		LOT NO.	BLOCK NO.	LINE NO.	STATION\ DIRECTION	APPROXIMATE LENGTH 4" PIPE
64	8" X 4" Tee Saddle	16	A	3A	0+44/RL	9'
65	8" X 4" Tee Saddle	14	A	3B	0+17/RL	14'
66	8" X 4" Tee Saddle	15	A	3B	0+22/L	6'
67	8" X 4" Tee Saddle	1	C	3B	2+07/RL	13'
68	8" X 4" Tee Saddle	14	C	3B	2+06/L	6'
69	8" X 4" Tee Saddle	13	C	3B	2+88/L	7'



NUMBER	TYPE	LOCATION			FOR INFORMATION ONLY	
		LOT NO.	BLOCK NO.	LINE NO.	STATION\ DIRECTION	APPROXIMATE LENGTH 4" PIPE
70	4" Stub	2	C	3B	3+39.2/RL	5'
71	8" X 4" Tee Saddle	12	C	3B	3+62/L	7'
72	8" X 4" Tee Saddle	3	C	3B	3+67/RL	13'
73	8" X 4" Tee Saddle	11	C	3B	4+36/L	5'
74	8" X 4" Tee Saddle	4	C	3B	4+41/RL	5'
75	8" X 4" Tee Saddle	10	C	3B	5+10/L	5'



NUMBER	TYPE	LOCATION			FOR INFORMATION ONLY	
		LOT NO.	BLOCK NO.	LINE NO.	STATION\ DIRECTION	APPROXIMATE LENGTH 4" PIPE
76	8" X 4" Tee Saddle	5	C	3B	5+15/RL	13'
77	8" X 4" Tee Saddle	9	C	3B	5+84/L	7'
78	8" X 4" Tee Saddle	6	C	3B	5+89/RL	5'
79	8" X 4" Tee Saddle	8	C	3B	6+58/L	7'
80	8" X 4" Tee Saddle	7	C	3B	6+63/RL	6'
81	4" Riser	2	A	3B	8+60.4/RL	10'



NUMBER	TYPE	LOCATION			FOR INFORMATION ONLY	
		LOT NO.	BLOCK NO.	LINE NO.	STATION\ DIRECTION	APPROXIMATE LENGTH 4" PIPE
82	4" Riser	1	A	3B	8+60.4/L	6'
83	4" Riser	1	B	3C	0+71/L	10'

Scale: 1" = 40' Horizontal
 1" = 5' Vertical
 • = Iron

Sta. 0+00, Begin Line 3B
 Sta. 9+51.5, Line 3B
 Extend 8" Pipe West.
 Manhole to be Constructed
 with Line 3.

Sta. 1+29.6 to Sta. 1+68.6,
 Install 39 L.F. Flowable Fill
 Per City Specifications.

Sta. 0+45.1 to Sta. 0+64.6,
 Install 49.5 L.F. Flowable Fill
 Per City Specifications.

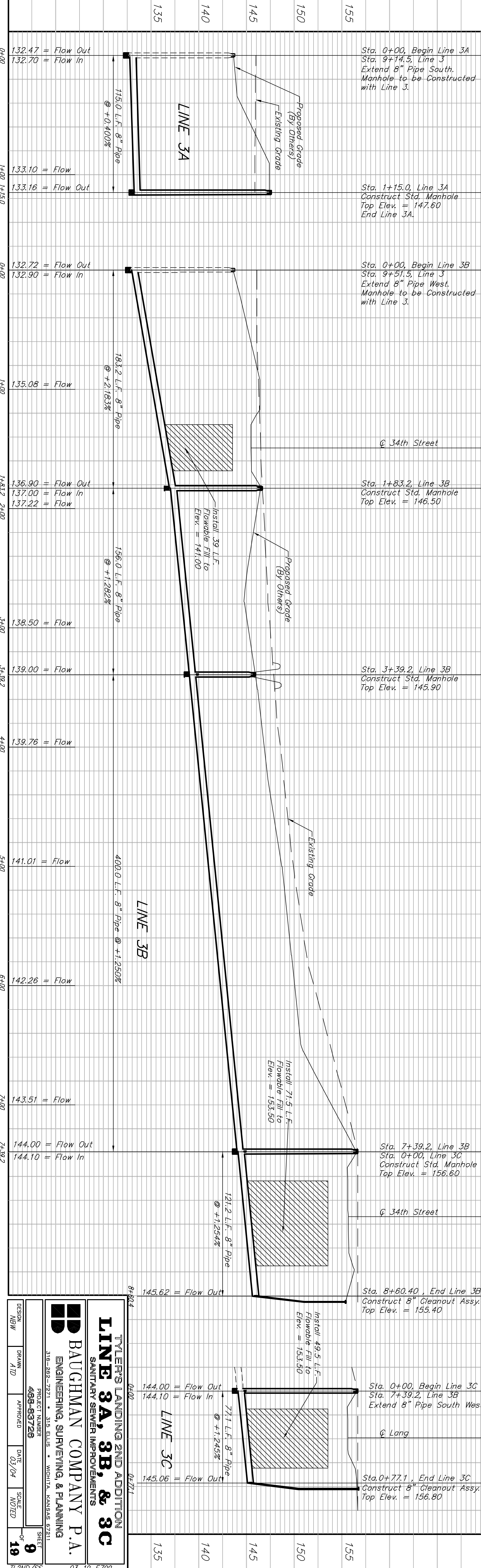
Sta. 7+39.2, Line 3B
 Construct Std. Manhole
 Top Elev. = 156.60

Sta. 8+60.4, End Line 3B
 Construct 8" Cleanout Assy.
 Top Elev. = 155.40

Sta. 0+00, Begin Line 3C
 Sta. 7+39.2, Line 3B
 Extend 8" Pipe South West

Sta. 0+77.1, End Line 3C
 Construct 8" Cleanout Assy.
 Top Elev. = 156.80

SEWER SERVICE TABLE		FOR INFORMATION ONLY	
NUMBER	TYPE	LOT NO.	BLOCK NO.
82	4" Riser	1	A
83	4" Riser	1	B



NUMBER	TYPE	LOCATION			FOR INFORMATION ONLY	
		LOT NO.	BLOCK NO.	LINE NO.	STATION\ DIRECTION	APPROXIMATE LENGTH 4" PIPE
135	8" X 4" Tee Saddle	15	A	3A	0+00/RL	132.47 = Flow Out 132.70 = Flow In
140	8" X 4" Tee Saddle	15	A	3A	1+15.0/RL	133.10 = Flow 133.16 = Flow Out
145	8" X 4" Tee Saddle	15	A	3B	0+00/RL	132.72 = Flow Out 132.90 = Flow In
150	8" X 4" Tee Saddle	15	A	3B	1+83.2/RL	135.08 = Flow
155	8" X 4" Tee Saddle	15	A	3B	1+83.2/RL	136.90 = Flow Out 137.00 = Flow In 137.22 = Flow
160	8" X 4" Tee Saddle	15	A	3B	3+00/RL	138.50 = Flow
165	8" X 4" Tee Saddle	15	A	3B	3+00/RL	139.00 = Flow
170	8" X 4" Tee Saddle	15	A	3B	4+00/RL	139.76 = Flow
175	8" X 4" Tee Saddle	15	A	3B	5+00/RL	141.01 = Flow
180	8" X 4" Tee Saddle	15	A	3B	6+00/RL	142.26 = Flow
185	8" X 4" Tee Saddle	15	A	3B	7+00/RL	143.51 = Flow
190	8" X 4" Tee Saddle	15	A	3B	7+00/RL	144.00 = Flow Out 144.10 = Flow In
195	8" X 4" Tee Saddle	15	A	3B	8+00/RL	145.62 = Flow Out
200	8" X 4" Tee Saddle	15	A	3C	0+00/RL	144.00 = Flow Out 144.10 = Flow In
205	8" X 4" Tee Saddle	15	A	3C	0+77.1/RL	145.06 = Flow Out

TYLER'S LANDING 2ND ADDITION
LINE 3A, 3B, & 3C
 SANITARY SEWER IMPROVEMENTS

BAUGHMAN COMPANY P.A.
 ENGINEERING, SURVEYING, & PLANNING

PROJECT NUMBER: 498-59720
 DATE: 03/04
 SHEET: 9 OF 19