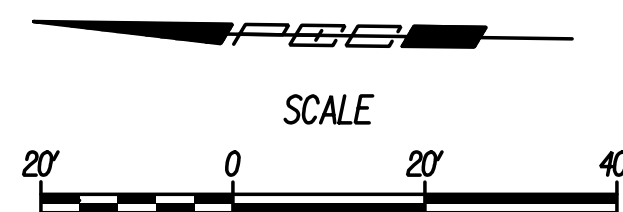


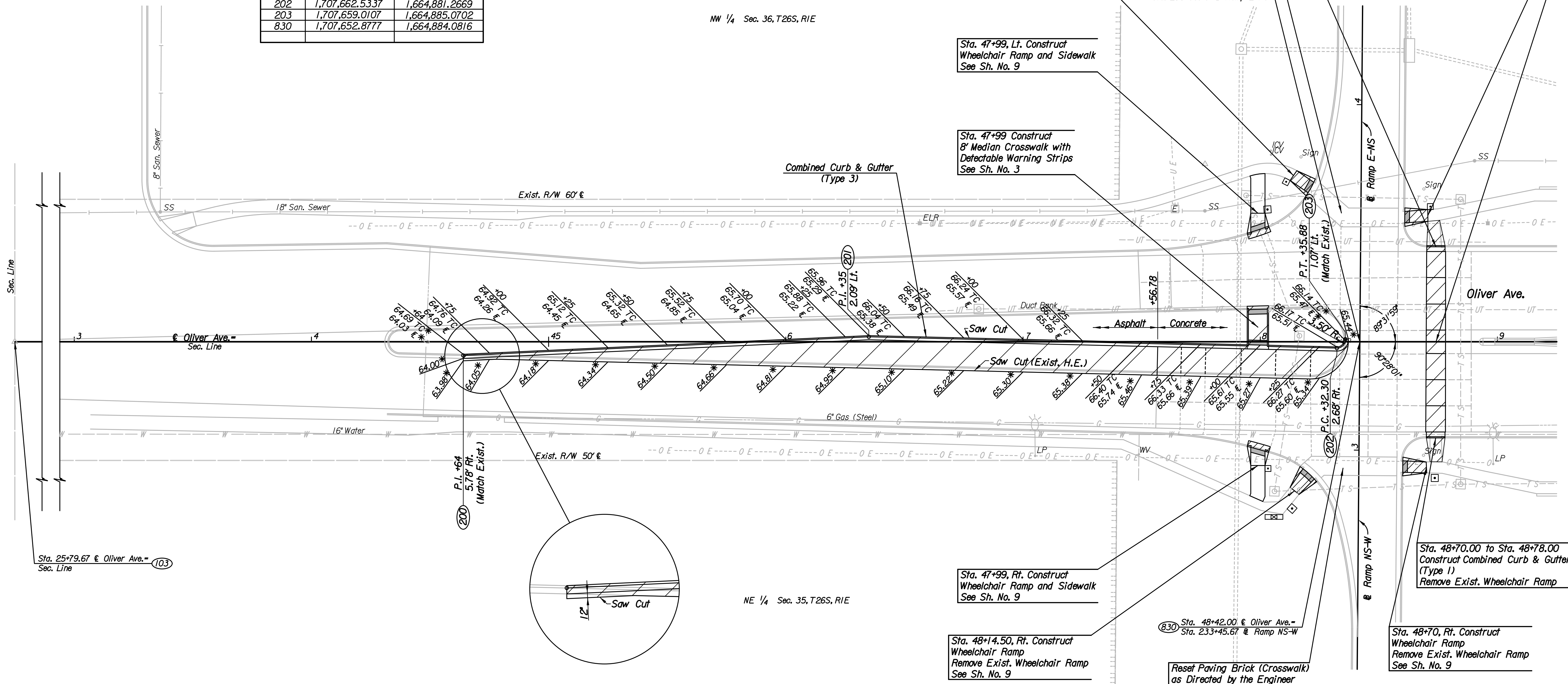
P.I. @ Sta. 25+79.67=
 NE Cor. Sec. 35, T26S, R1E
 N 1,709,914.9915 E 1,664,852.8157
 1. See References below

POINT NO.	NORTH COORDINATE	EAST COORDINATE
103	1,709,914.9915	1,664,852.8157
200	1,708,030.7565	1,664,873.0820
201	1,707,859.8951	1,664,883.3116
202	1,707,662.5337	1,664,881.2669
203	1,707,659.0107	1,664,885.0702
830	1,707,652.8777	1,664,884.0816



NW 1/4 Sec. 36, T26S, R1E

NE 1/4 Sec. 35, T26S, R1E



Sta. 48+70.20 to Sta. 48+78.20
 Construct Combined Curb & Gutter
 (Type 1)
 Remove Exist. Wheelchair Ramp

Sta. 48+74.10 Remove
 Exist. Paving Brick (Crosswalk)
 and Leveling Sand. Replace
 with 3\"/>

Sta. 48+70.50, Lt. Construct
 Wheelchair Ramp
 Remove Exist. Wheelchair Ramp
 See Sh. No. 9

Sta. 48+14, Lt. Construct
 Wheelchair Ramp
 Remove Exist. Wheelchair Ramp
 See Sh. No. 9

Reset Paving Brick (Crosswalk)
 as Directed by the Engineer

830 Sta. 48+42.00 @ Oliver Ave.=
 Sta. 233+00.10 @ Ramp E-NS

Sta. 47+99, Lt. Construct
 Wheelchair Ramp and Sidewalk
 See Sh. No. 9

Sta. 47+99 Construct
 8\"/>

Sta. 48+70.00 to Sta. 48+78.00
 Construct Combined Curb & Gutter
 (Type 1)
 Remove Exist. Wheelchair Ramp

Sta. 47+99, Rt. Construct
 Wheelchair Ramp and Sidewalk
 See Sh. No. 9

Sta. 48+14.50, Rt. Construct
 Wheelchair Ramp
 Remove Exist. Wheelchair Ramp
 See Sh. No. 9

830 Sta. 48+42.00 @ Oliver Ave.=
 Sta. 233+45.67 @ Ramp NS-W

Reset Paving Brick (Crosswalk)
 as Directed by the Engineer

Sta. 48+70, Rt. Construct
 Wheelchair Ramp
 Remove Exist. Wheelchair Ramp
 See Sh. No. 9

* Match Existing Elevation

Utilities

- Gas Kansas Gas Service
- Power Westar Energy
- Sanitary Sewer City of Bel Aire
- Telephone AT&T, Wichita Central Unit
- Water Wichita Water Utilities

- NE Cor. Sec. 35, T26S, R1E
1. 1/4\"/>

No.	Revision	By	Date
CITY OF WICHITA			
OLIVER PLAN			
STA. 43+00 TO STA. 49+00			
GARY JANZEN, P.E.-CITY ENGINEER			
CITY OF WICHITA PROJECT NO. 472-85174			
PEC PROFESSIONAL ENGINEERING CONSULTANTS, P.A.			
303 SOUTH TOPEKA WICHITA, KS 67202			
316-262-2691 www.pec1.com			
Designed by	SAC	Job No.	13675
Drawn by	SVB	Date	May, 2014
			Sh. 5 of 28

Plotted By: svb Date: 7/2/2014 9:54:29 AM
 FILE: U:\Wichita-Civil\2013\13675\000\Trans\Road\DGN Project\Plan\13675-Oliver-Plan 43.dgn