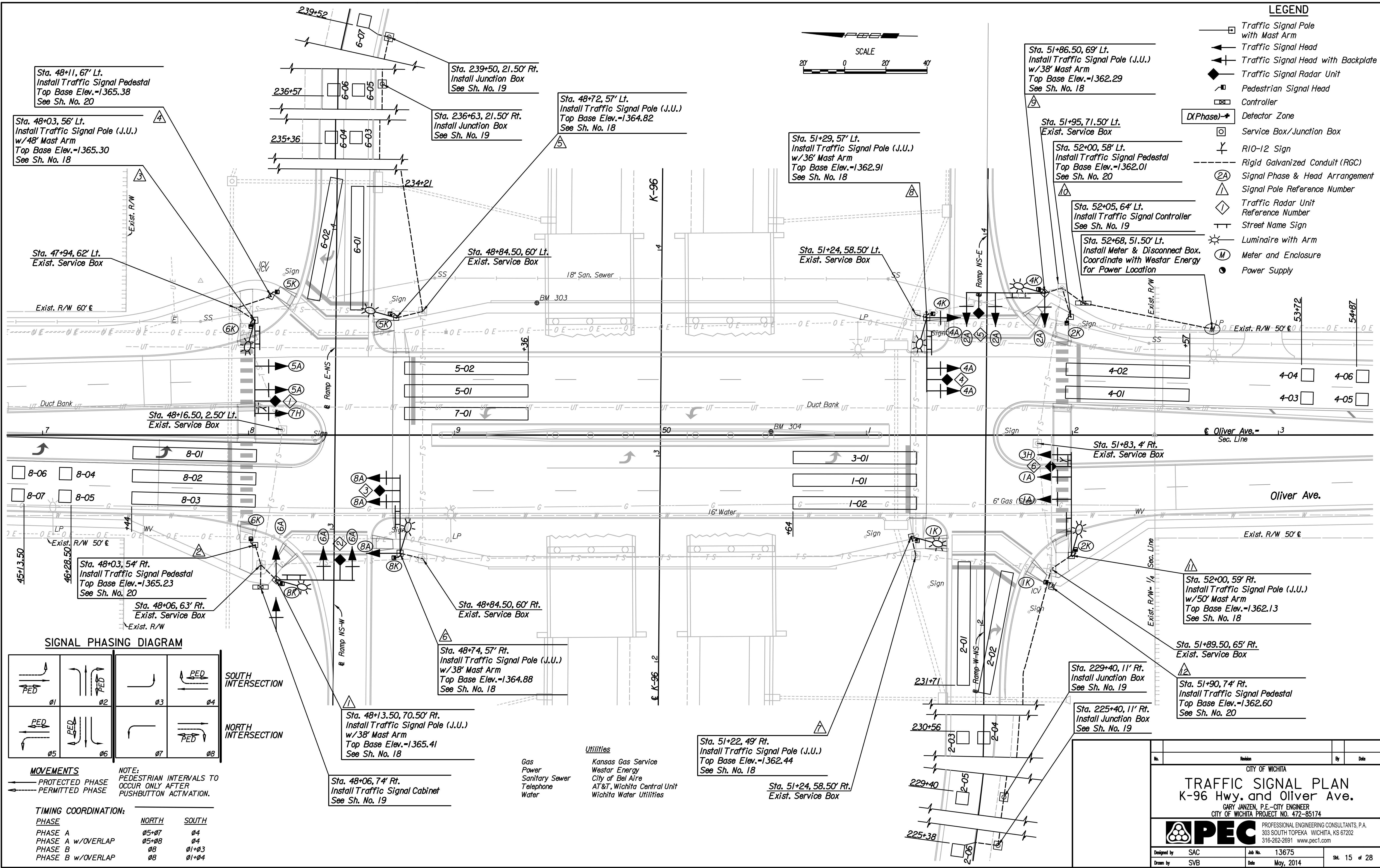
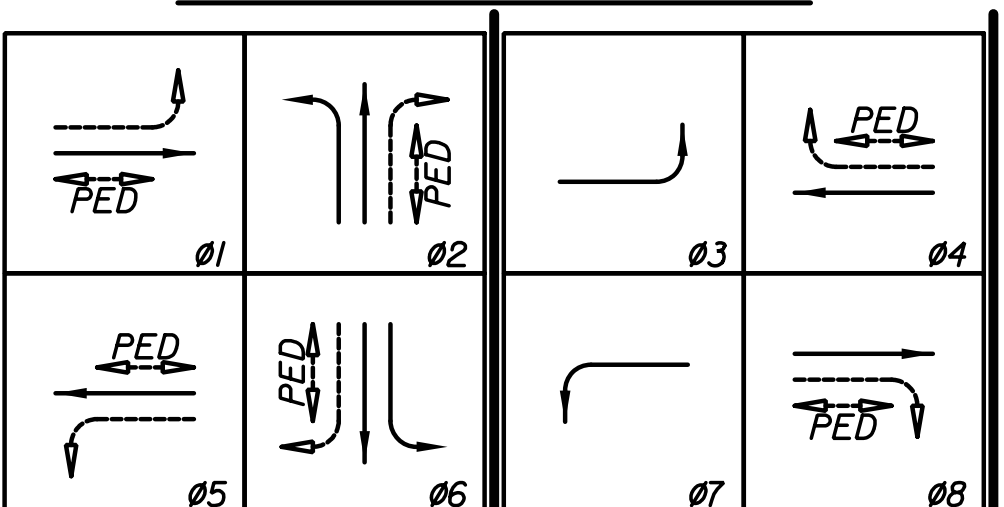


Plotted By: svb Date: 7/2/2014 10:09:28 AM
 FILE: U:\Wichita-Civil\2013\13675\000\Trans\Road\001\Project\Traffic Signal\13675-Oliver Signal Plan.dgn



SIGNAL PHASING DIAGRAM



MOVEMENTS

← PROTECTED PHASE
 → PERMITTED PHASE

NOTE: PEDESTRIAN INTERVALS TO OCCUR ONLY AFTER PUSHBUTTON ACTIVATION.

TIMING COORDINATION:

PHASE	NORTH	SOUTH
PHASE A	05+07	04
PHASE A w/OVERLAP	05+08	04
PHASE B	08	01+03
PHASE B w/OVERLAP	08	01+04

- Utilities**
- Gas: Kansas Gas Service
 - Power: Westar Energy
 - Sanitary Sewer: City of Bel Aire
 - Telephone: AT&T, Wichita Central Unit
 - Water: Wichita Water Utilities

Revision		By	Date
CITY OF WICHITA			
TRAFFIC SIGNAL PLAN			
K-96 Hwy. and Oliver Ave.			
GARY JANZEN, P.E.-CITY ENGINEER CITY OF WICHITA PROJECT NO. 472-85174			
PEC		PROFESSIONAL ENGINEERING CONSULTANTS, P.A. 303 SOUTH TOPEKA WICHITA, KS 67202 316-262-2691 www.pec1.com	
Designed by	SAC	Job No.	13675
Drawn by	SVB	Date	May, 2014
			Sht. 15 of 28