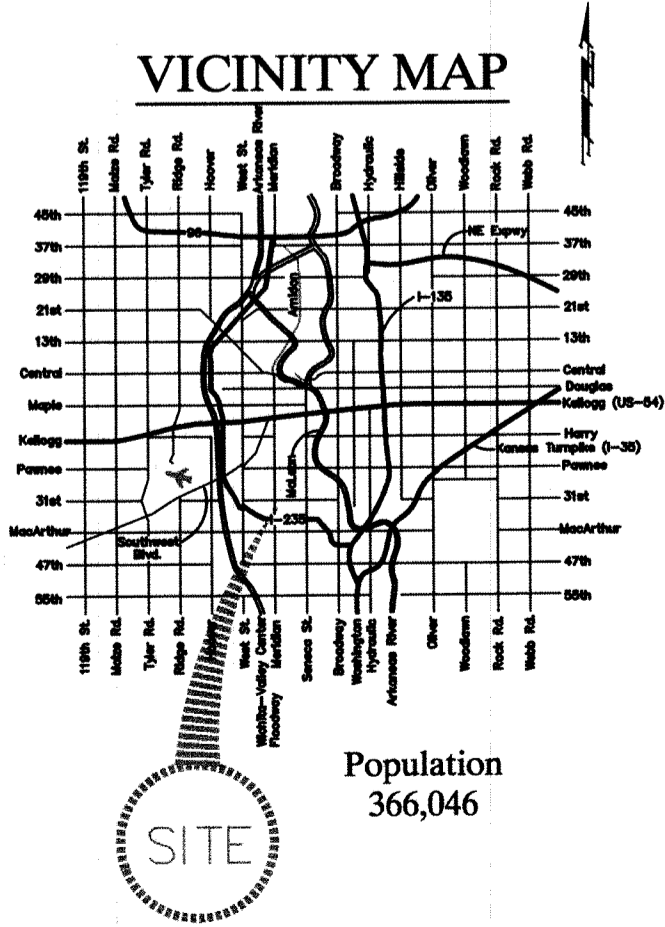
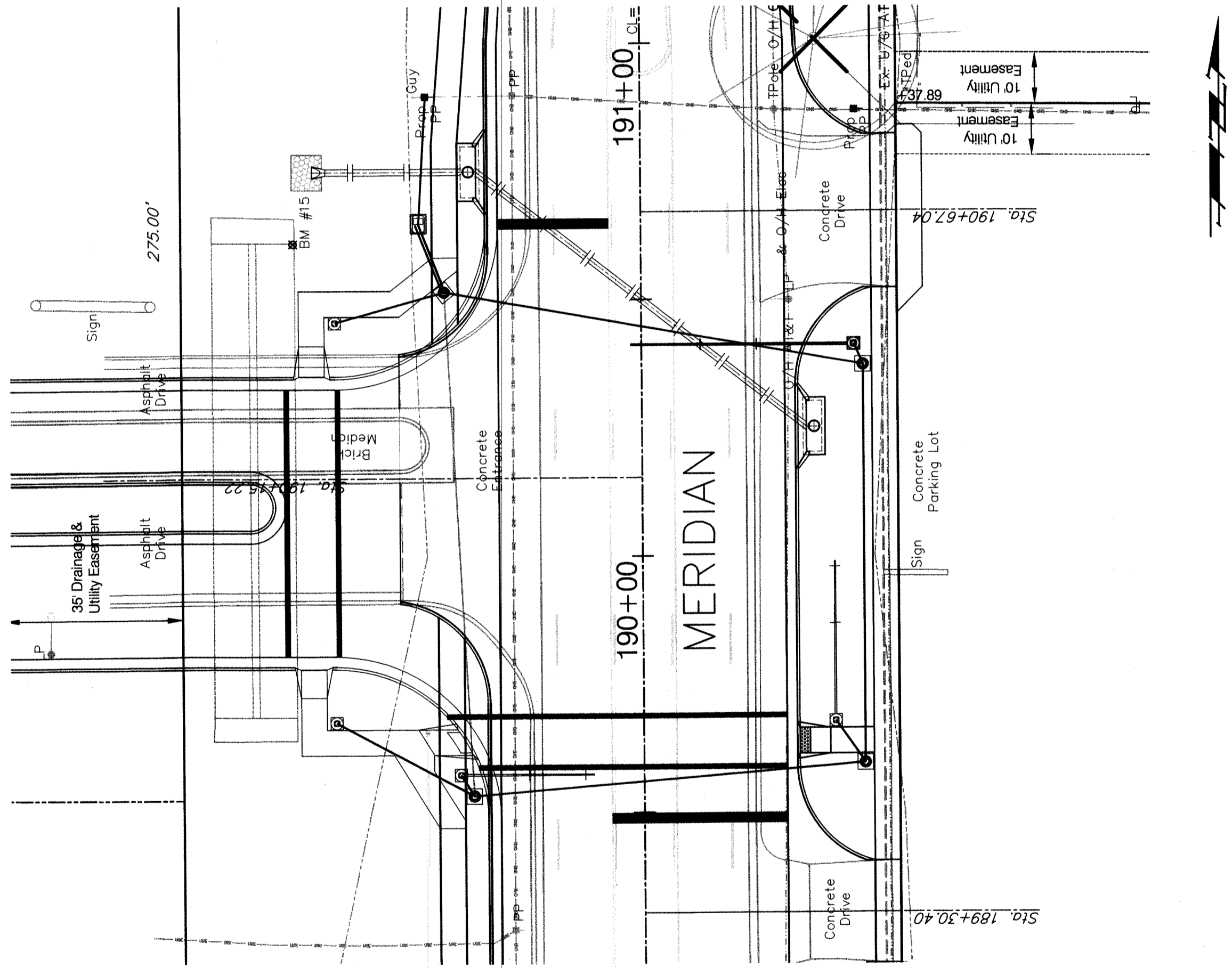


South Meridian YMCA Signalization

Project No.
472-85073

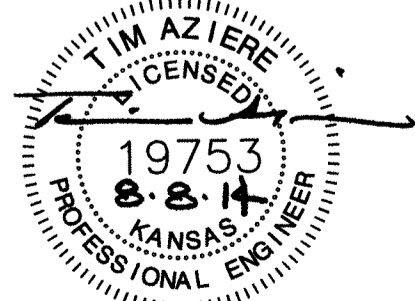
O.C.A. No.
707043



CITY OF WICHITA,
SEDGWICK COUNTY, KANSAS
Gary Janzen, P.E., City Engineer

August, 2014

FINAL PLANS



Design: AZIERE	Project No. 14-06-E084	CAPITAL IMPROVEMENT PROJECT
Drawn: AZIERE	South Meridian YMCA Signalization	
Approved: AZIERE	Signal Plan	
Scale: NONE		

Baughman Company, P.A.
315 Ellis St. Wichita, KS 67211 P 316-262-7271 F 316-262-0149
Baughman ENGINEERING | SURVEYING | PLANNING | LANDSCAPE ARCHITECTURE

August, 2014
SHEET 1 OF 7