

Install 25.1 L.F. 2" RGC

Sta 190+64.70, 43.49' Lt
Install New Traffic
Controller and Pad. See
Traffic Detail Sheet

Install (2) 13.9 L.F. 2" RGC

Sta 190+51.42, 38.57' Lt
Install New Traffic Manhole.
With Cast-in-Place Lid.
See Traffic Detail Sheet

Install 22.3 L.F. 2" RGC

Sta 190+45.59, 60.00' Lt
Install Ped Signal Pole,
Pushbuttons, and Signs.
Contractor responsible to
submit a drawing for an
adaptor plate to reduce
from the 16" bolt circle to
accept the 15' pedestal.

Existing 3" RGC

Sta 189+67.66, 60.00' Lt
Install Ped Signal Pole,
Pushbuttons, and Signs

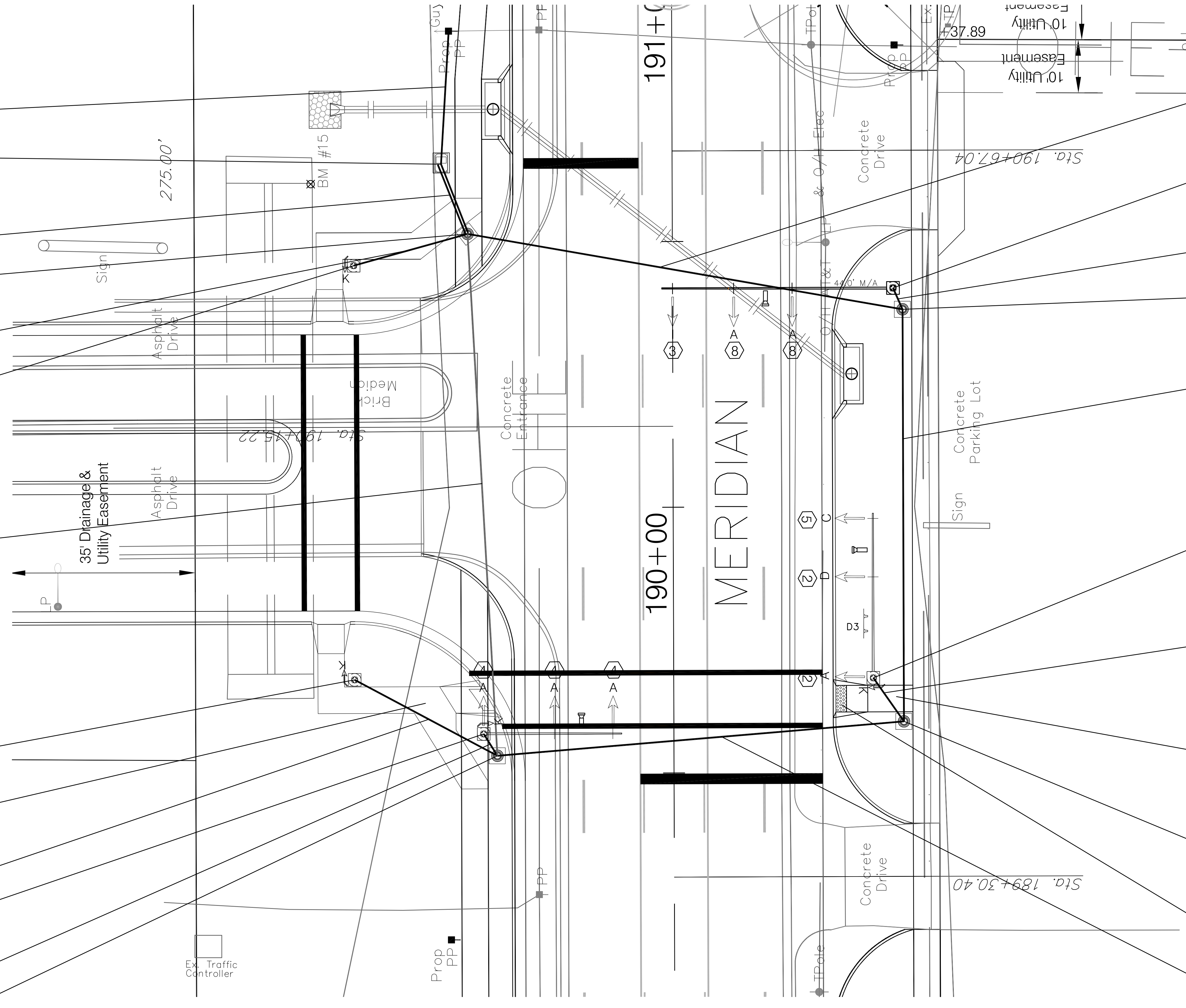
Future sidewalk and
Ramps to be constructed
by "Others"

Install 30.4 L.F. 2" RGC

Sta 189+57.46, 35.80' Lt
Relocate (W) Traffic Signal
Pole, Pushbuttons, and
Signs

Install 4.9 L.F. 2" RGC

Sta 189+53.34, 33.23' Lt
Install New Traffic Manhole.
With Cast-in-Place Lid.
See Traffic Detail Sheet



Install 83.1 L.F. 3" RGC
by trenchless methods

Sta 190+41.13, 41.13' Rt
Install Traffic Signal Pole
with 44.0' Mastarm, and
Signs

Install 4.4 L.F. 2" RGC

Sta 190+37.10, 43.29' Rt
Install New Traffic Manhole.
With Cast-in-Place Lid.
See Traffic Detail Sheet

Install 77.5 L.F. 3" RGC

Sta 189+67.76, 37.57' Rt
Relocate (E) Traffic Signal
Pole, Pushbuttons, and
Signs

Install 10.1 L.F. 2" RGC

Construct 5' wide (4")
concrete sidewalk

Sta 189+59.56, 43.31' Rt
Install New Traffic Manhole.
With Cast-in-Place Lid.
See Traffic Detail Sheet

Construct ADA Compliant
Wheelchair Ramp with
Detectable Warnings.

Install 76.8 L.F. 3" RGC
by trenchless methods

Drawing File: E:\Projects\South Meridian YMCA Signalization\Bases
Project No. 1406-E084 CAPITAL IMPROVEMENT PROJECT
Design: AZIERE
Drawn: AZIERE
Approved: AZIERE
Scale: NONE
South Meridian YMCA Signalization
Signal Plan

B Baughman Company, P.A.
315 Ellis St. Wichita, KS 67211 P 316-262-7271 F 316-262-0149
ENGINEERING | SURVEYING | PLANNING | LANDSCAPE ARCHITECTURE

August, 2014
SHEET
2
OF
7