

PLOTTED: Wednesday, August 27, 2014 @ 08:17 AM

# STORM WATER SEWER #374

TO SERVE

# GREENWICH BUSINESS CENTER ADDITION


## DETENTION

PROJECT NO. 468-84745

THE CITY OF WICHITA, KANSAS  
GARY JANZEN, P.E. - CITY ENGINEER

OCA NO. 751525

### GENERAL NOTES

- UNLESS SHOWN OR OTHERWISE STATED ON THESE DRAWINGS, MATERIALS AND CONSTRUCTION SHALL BE IN ACCORDANCE WITH THE CITY OF WICHITA STANDARD SPECIFICATIONS.
- THE TOPS OF INLETS AND MANHOLES AS NOTED ON THE PLANS MAY VARY SO AS TO MEET PROPOSED TOP OF CURB ELEVATIONS OR PAVEMENT ELEVATIONS. THE FIELD ENGINEER SHALL LOCATE INLETS AND MANHOLES WITH REFERENCE TO PROPOSED PAVING PLANS OF THE PERTINENT STREETS.
- ALL CONCRETE SHALL BE STANDARD PAVING MIX UNLESS OTHERWISE NOTED.
- THE CONTRACTOR SHALL BE RESPONSIBLE FOR PRESERVING PROPERTY IRONS. THE CONTRACTOR SHALL BE REQUIRED TO RE-ESTABLISH ANY PROPERTY IRONS WHICH ARE DAMAGED OR DESTROYED BY HIS CONSTRUCTION OPERATIONS. SUCH IRONS SHALL BE RE-ESTABLISHED BY A LICENSED LAND SURVEYOR IN ACCORDANCE WITH STATE LAWS.
- TREES TO BE REMOVED ARE MARKED  ALL TREES WHICH IN THE OPINION OF THE FIELD ENGINEER CAN BE SAVED, SHALL BE SAVED.
- CONTRACTOR SHALL NOTIFY UTILITY COMPANIES OF CONSTRUCTION SCHEDULING.
- EXISTING UTILITIES AND THEIR LOCATIONS, AS SHOWN ON THE PLANS REPRESENT THE BEST INFORMATION OBTAINABLE FOR DESIGN. LOCATION INFORMATION HAS BEEN OBTAINED FROM THE VARIOUS COMPANIES AND IS EITHER FROM COMPANY UTILITY DRAWINGS OR COMPANY PROVIDED FIELD LOCATIONS. THE PLAN LOCATIONS SHOWN ARE NOT GUARANTEED. ADDITIONAL EXISTING UTILITIES MAY ALSO BE ENCOUNTERED.
- CONTRACTOR WILL BE REQUIRED TO PROVIDE A MINIMUM ADVANCE NOTICE OF SEVENTY-TWO (72) HOURS TO UTILITY COMPANIES TO STARTING ANY EXCAVATION AS FOLLOWS:

KANSAS ONE-CALL 800-344-7233  
OR 687-2470 (LOCAL WICHITA)

THE CONTRACTOR MUST NOTIFY THE FOLLOWING IN CASE OF EMERGENCY:

COX COMMUNICATIONS (CABLE)	262-0661
WESTAR (ELECTRIC)	261-6512
KANSAS GAS SERVICE (GAS)	832-3101
SBC (TELEPHONE)	800-870-8390
CITY OF WICHITA WATER & SEWER	262-6000
BLACK HILLS ENERGY (GAS)	800-303-0357

- RUBBLE FROM THE REMOVAL OF MISCELLANEOUS STRUCTURES AND EXCESS EXCAVATION WHICH IS TO BE WASTED SHALL BE DISPOSED OF ON SITES TO BE PROVIDED BY THE CONTRACTOR. THESE SITES SHALL BE APPROVED BY THE ENGINEER AS TO SUITABILITY, APPEARANCE AND SITE LOCATION. LOCATIONS THAT, IN THE OPINION OF THE ENGINEER, WILL LEAVE AN UNSIGHTLY APPEARANCE WILL NOT BE APPROVED. ALL DISPOSAL SITES MUST BE APPROVED BY THE KANSAS DEPARTMENT OF HEALTH AND ENVIRONMENT. MATERIAL EITHER STOCKPILED OR DISPOSED OF IN A FLOOD PLAIN WOULD REQUIRE A KANSAS STATE BOARD OF AGRICULTURE PERMIT. ANY MATERIAL DUMPED IN WATERS OF THE UNITED STATES OR WETLANDS IS SUBJECT TO U.S. CORPS OF ENGINEERS PERMITTING REGULATIONS. ANY MATERIAL BURIED OR STOCKPILED BEYOND APPROVED CONSTRUCTION LIMITS WOULD REQUIRE ADDITIONAL ARCHAEOLOGICAL INVESTIGATIONS UNLESS BURIED IN A PREVIOUSLY APPROVED BORROW LOCATION.

- DEVELOPER FOR THIS PROJECT IS:  
RITCHIE DEVELOPMENT CORPORATION  
8100 E. 22nd ST. N  
WICHITA, KANSAS, 67226  
CONTACT - KEVIN MULLEN  
316-834-7300

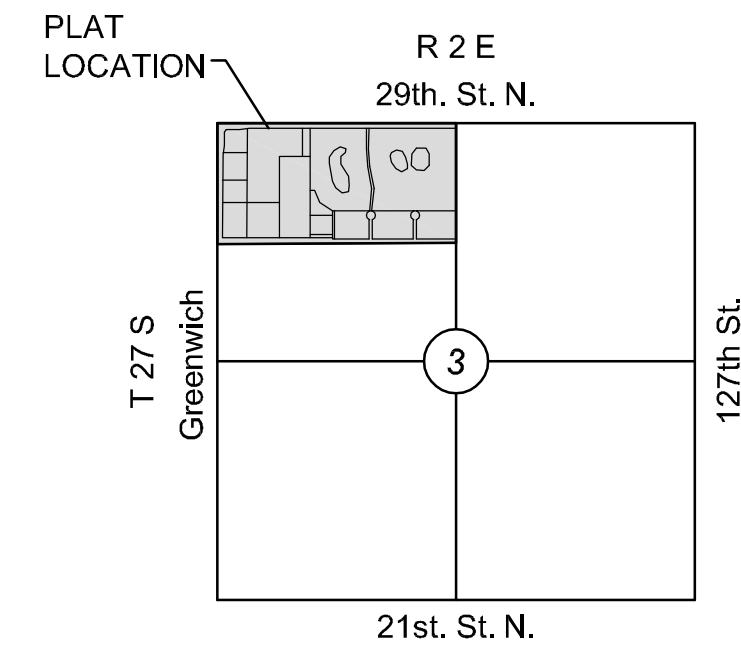
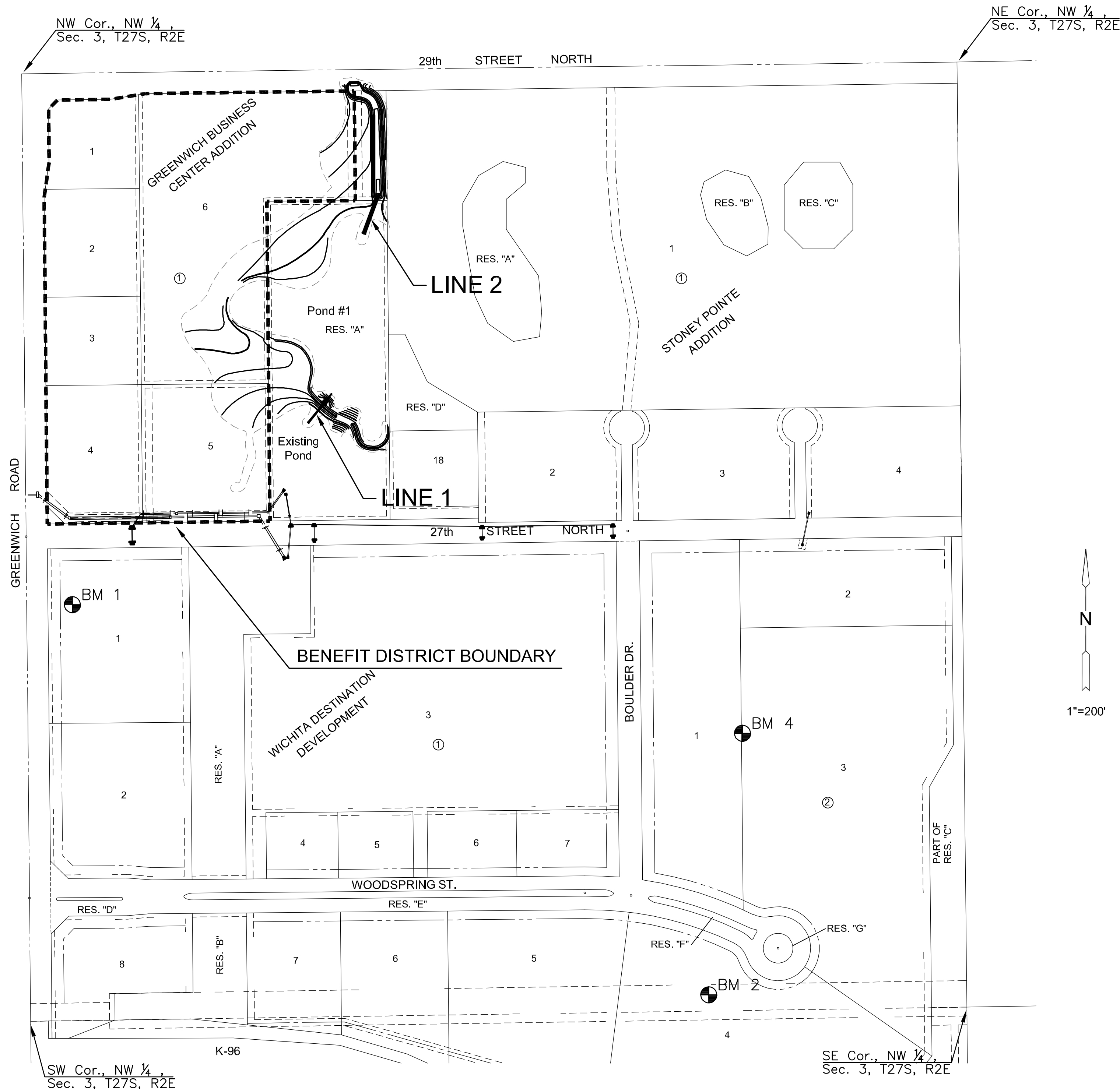
#### NEW DEVELOPMENT

DISTURBED AREA= 5.0 AC.  
DISTURBED PERVIOUS AREA= 5.0 AC

REQUIRED WATER QUALITY AND CHANNEL PROTECTION:  
WQ = 2.8 AC-FT  
CP = 3.6 AC-FT

PROVIDED WATER QUALITY AND CHANNEL PROTECTION:  
WQ<sub>v</sub> = 4.3 AC-FT  
CP<sub>v</sub> = 7.0 AC-FT

THIS OVERALL PROJECT SATISFIES CHAPTER 16-32 OF THE CITY CODE THROUGH TREATMENT PROVIDED BY A SERIES TWO DETENTION PONDS AND THEIR OUTLET STRUCTURES.



### VICINITY MAP

No Scale

### INDEX TO DRAWINGS

SHEET NO.	DESCRIPTION
1	TITLE SHEET
2	AREA INLET DETAILS
3	RCP END SECTION
4	LINE 1 AND LINE 2
5	GRADING PLAN (NORTH)
6	GRADING PLAN (SOUTH)
7	GRADING DETAILS & NOTES
8	EROSION CONTROL PLAN
9	BUBBLE MAP
10	BMP DETAILS 1
11	BMP DETAILS 2
12	BMP DETAILS 3
13	BMP DETAILS 4
14	BMP DETAILS 5
15	PLAT

### BENCHMARKS

- BM#1 TOP OF "T" POST 129.17' EAST AND 117.81' NORTH OF W. 1/4, COR, SEC 3, T27S, R2E, 6TH P.M.  
N=1703621.35, E=1688305.21  
ELEV=1376.5 (NAVD 88)
- BM#2 TOP OF "T" POST 729.87' WEST AND 35.53' NORTH OF NE COR, SW 1/4 SEC 3, T27S, R2E, 6TH P.M.  
N=1702517.50, E=1688104.50  
ELEV=1391.3 (NAVD 88)
- BM#4 TOP OF "T" POST 626.03' WEST AND 780.88' NORTH OF NE COR, SW 1/4, SEC 3, T27S, R2E, 6TH P.M.  
N=1703257.35, E=1688200.41  
ELEV=1400.7 (NAVD 88)

### DATUM

THE PROJECT HORIZONTAL DATUM IS BASED ON M.J. HARDEN, KANSAS STATE PLANE COORDINATES SYSTEM, SOUTH ZONE, (US SURVEY FEET DEFINITION), WITH A COMBINATION ADJUSTMENT FACTOR (CAF) OF 1.000120014.

ALL COORDINATE AND DIMENSIONS SHOWN ON THESE PLANS ARE MODIFIED TO GROUND VALUES.

THE FOLLOWING EQUATIONS CAN BE USED FOR CONVERSION:

GROUND COORDINATES TO STATE PLANE COORDINATES = GROUND X 1/CAF  
STATE PLAN COORDINATES TO GROUND COORDINATES = STATE PLANE X CAF

THE VERTICAL DATUM USED IS NAVD 88.



STORM WATER SEWER PLAN FOR  
**GREENWICH BUSINESS CENTER ADDITION**  
DETENTION

©2013 MKEC Engineering All Rights Reserved  
www.mkec.com  
These drawings and their contents, including, but not limited to, all concepts, designs, & ideas are the exclusive property of MKEC Engineering (MKEC), and may not be used or reproduced in any way without the express consent of MKEC.

### TITLE SHEET

PROJECT NO.	468-84745	
DATE	AUGUST 2014	
SCALE	1"=150'	
DESIGNED	DRAWN	CHECKED
SLF	KKL	MAB
NO.	REVISION	DATE

SHEET NO.

J:\CIVIL\5090\DWG\CIVIL\SD\SWR\DETENTION\050903\_DT.DWG