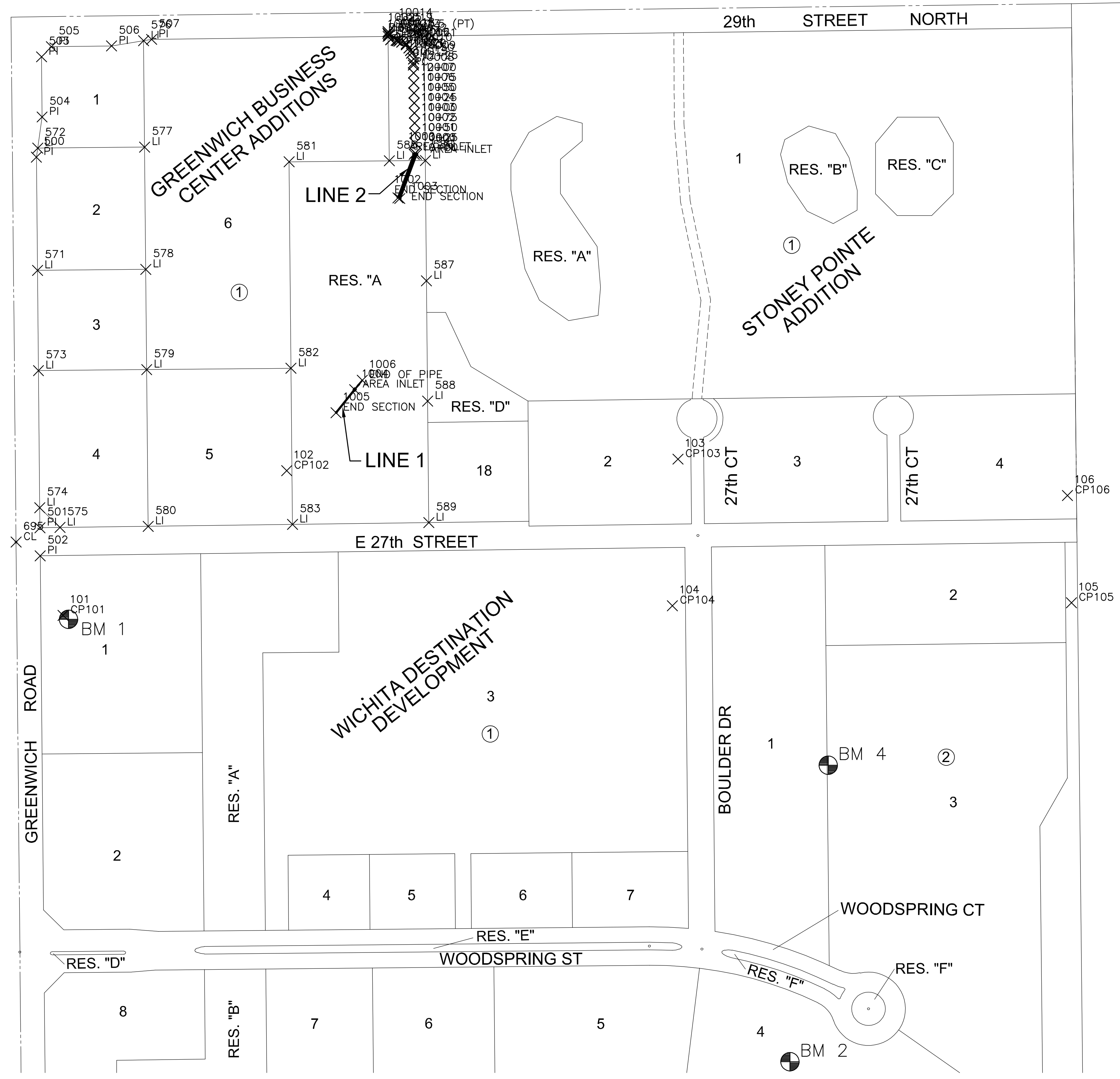


PLOTTED: Wednesday, August 27, 2014 @ 07:50AM



STORM WATER SEWER PLAN FOR
GREENWICH BUSINESS CENTER ADDITION
DETENTION

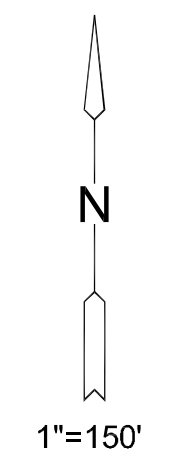


CHANNEL FLOWLINE POINTS			
POINT #	Northing	Easting	DESC.
10000	1704783.74	1687169.91	10+00
10001	1704808.73	1687169.41	10+25
10002	1704833.72	1687168.91	10+50
10003	1704858.72	1687168.41	10+75
10004	1704883.72	1687167.91	11+00
10005	1704908.71	1687167.41	11+25
10006	1704933.71	1687166.92	11+50
10007	1704958.70	1687166.42	11+75
10008	1704983.68	1687165.92	12+00
10009	1705008.65	1687165.46	12+25
10010	1705033.13	1687160.69	12+50
10011	1705054.26	1687147.87	12+75
10012	1705064.29	1687125.25	13+00
10013	1705076.96	1687104.75	13+25
10014	1705087.01	1687102.26	13+35.5 (PT)
10015	1705003.65	1687165.52	PC
10016	1705046.40	1687154.58	PCC1
10017	1705060.93	1687136.60	PCC2
10018	1705065.14	1687122.31	PCC3
10019	1705079.39	1687103.54	PCC4
10020	1705018.83	1687165.80	PI1
10021	1705040.03	1687158.22	PI2
10022	1705056.74	1687148.08	PI3
10023	1705063.14	1687129.49	PI4
10024	1705066.93	1687108.88	PI5
10025	1705083.07	1687102.13	PI6

PLAT POINTS			
Point #	Northing	Easting	Desc.
500	1704774.00	1686225.15	PI
501	1703849.56	1686233.88	PI
502	1703779.56	1686234.54	PI
503	1705024.13	1686237.79	PI
504	1704874.14	1686239.21	PI
505	1705049.45	1686262.55	PI
506	1705051.35	1686412.54	PI
507	1705067.63	1686512.34	PI
523	1706477.93	1688495.53	RP
571	1704491.42	1686227.82	LI
572	1704796.44	1686228.30	LI
573	1704241.44	1686230.18	LI
574	1703899.56	1686233.41	LI
575	1703850.22	1686283.88	LI
576	1705064.38	1686492.42	LI
577	1704798.96	1686494.93	LI
578	1704493.97	1686497.81	LI
579	1704243.98	1686500.17	LI
580	1703853.13	1686503.86	LI
581	1704762.36	1686855.29	LI
582	1704247.39	1686860.15	LI
583	1703857.89	1686863.83	LI
584	1705075.13	1687102.35	LI
585	1704764.72	1687105.28	LI
586	1704765.57	1687195.27	LI
587	1704465.59	1687198.11	LI
588	1704165.60	1687200.94	LI
589	1703862.39	1687203.80	LI
664	1706477.93	1688495.53	RP
695	1703813.77	1686174.22	CL

CONTROL POINTS			
Point #	Northing	Easting	Desc.
101	1703631.12	1686291.58	CP101
102	1703991.91	1686849.39	CP102
103	1704020.67	1687825.32	CP103
104	1703655.13	1687811.56	CP104
105	1703662.29	1688806.89	CP105
106	1703930.02	1688797.11	CP106

STORM WATER SEWER POINTS			
Point #	Northing	Easting	Desc.
1000	1704780.99	1687167.22	AREA INLET
1001	1704780.99	1687172.72	AREA INLET
1002	1704672.31	1687127.16	END SECTION
1003	1704670.66	1687131.50	END SECTION
1004	1704194.11	1687018.99	AREA INLET
1005	1704136.44	1686972.40	END SECTION
1006	1704217.46	1687037.86	END OF PIPE



EVERY ATTEMPT HAS BEEN MADE TO INSURE ALL COORDINATE VALUES SHOWN ARE AN ACCURATE AND TRUE REPRESENTATION OF THE CURRENT PLANS. ALL VALUES ARE TO BE CONFIRMED WITH THE FINAL SIGNED PLAN SET BEFORE USE.



©2014 MKEC Engineering All Rights Reserved
 These drawings and their contents, including, but not limited to, all concepts, designs, & ideas are the exclusive property of MKEC Engineering (MKEC), and may not be used or reproduced in any way without the express consent of MKEC.

BUBBLE MAP	
PROJECT NO.	468-84745
DATE	AUGUST 2014
SCALE	AS SHOWN
DESIGNED	DRAWN
SLF	KKL
CHECKED	GJA
NO.	REVISION
DATE	
SHEET NO.	
9 OF 15	

J:\CIVIL\5090\DWG\CIVIL\5090\DETENTION\5090_BUBBLE.DWG