

# PAVING & WATERLINE RELOCATION PLANS FOR

# MESSIAH BAPTIST CHURCH 4TH ADDITION

## 21ST STREET RIGHT TURN LANE

PROJECT NO. 472-85168

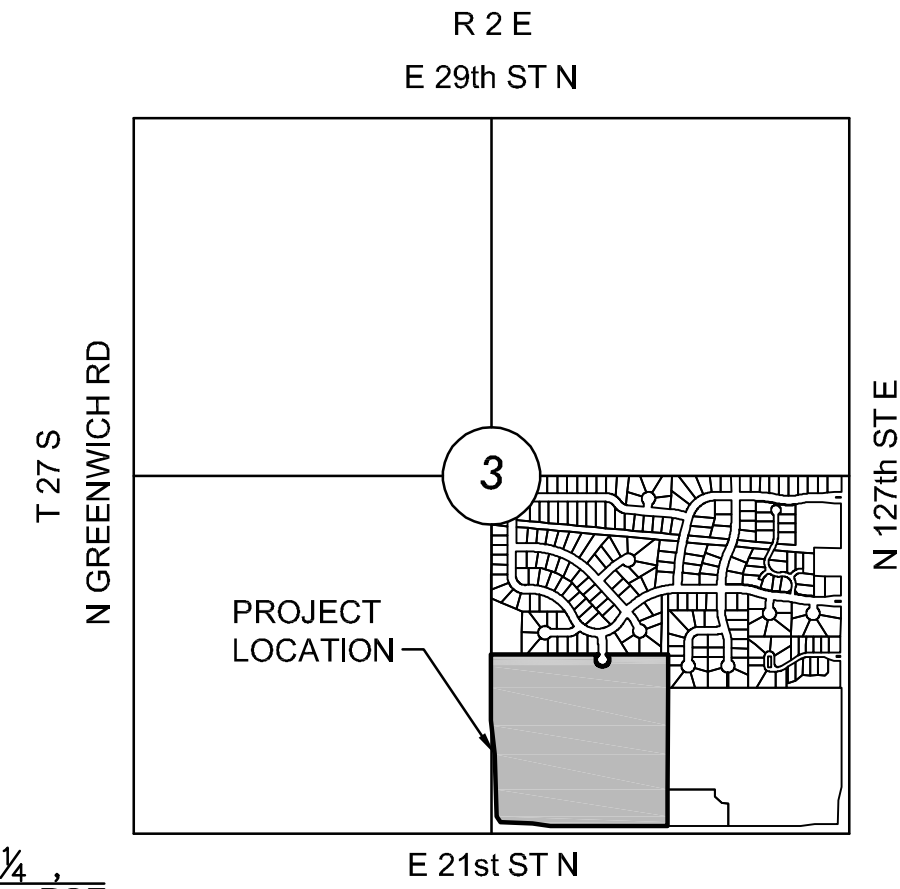
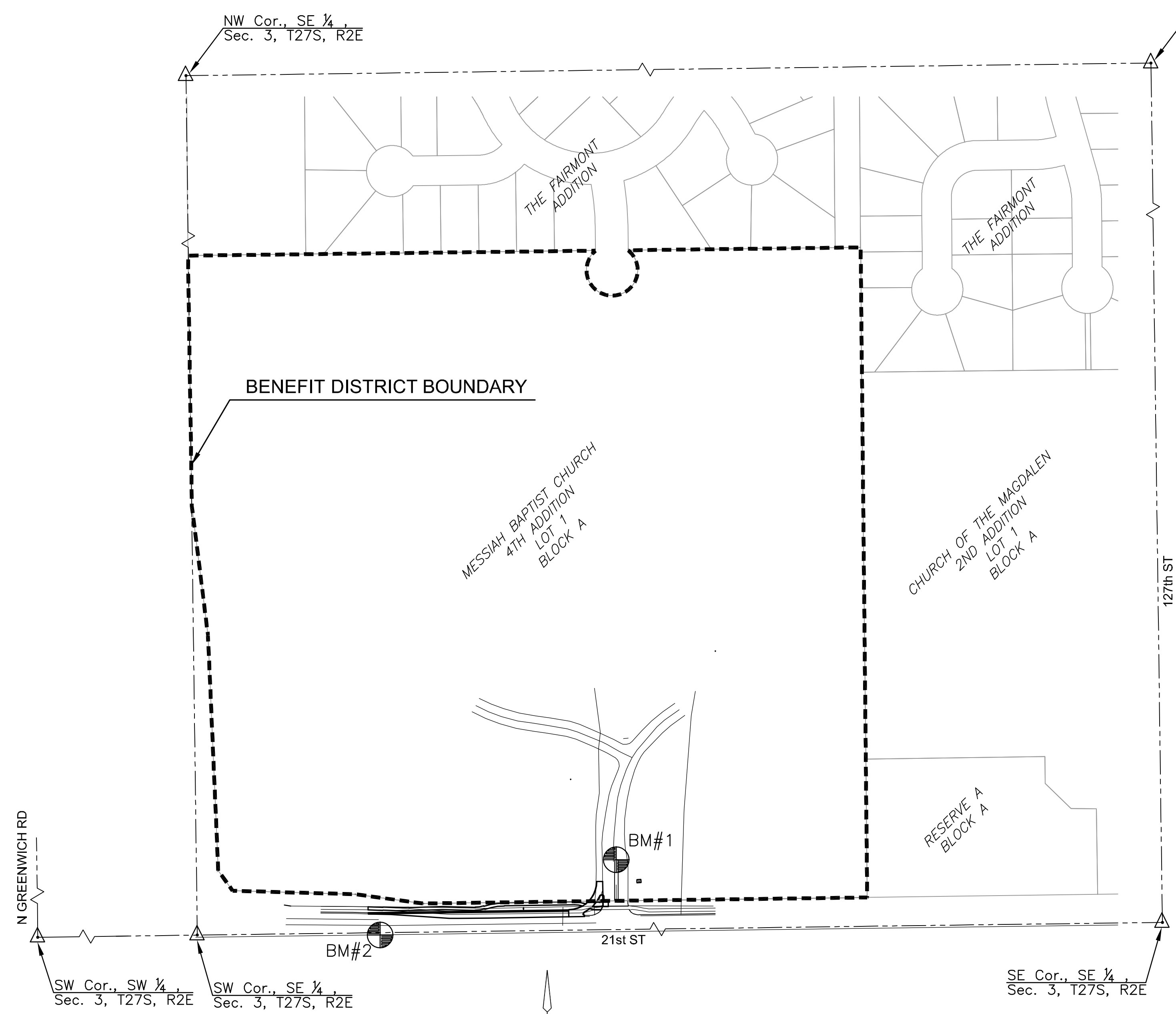
CITY OF WICHITA, SEDGWICK COUNTY, KANSAS  
GARY JANZEN, P.E. - CITY ENGINEER

OCA NO. 766307

### GENERAL NOTES

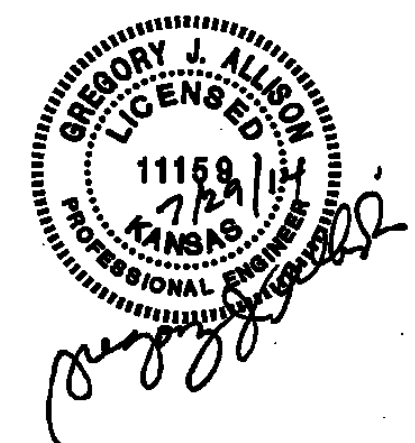
- UNLESS SHOWN OR STATED OTHERWISE ON THESE DRAWINGS, MATERIALS AND CONSTRUCTION SHALL BE IN ACCORDANCE WITH CITY OF WICHITA CONCRETE PAVEMENT AND ASPHALTIC CONCRETE PAVEMENT SPECIFICATIONS.
- CONTRACTOR WILL BE REQUIRED TO PROVIDE A MINIMUM ADVANCE NOTICE OF SEVENTY-TWO (72) HOURS TO UTILITY COMPANIES PRIOR TO STARTING ANY EXCAVATION AS FOLLOWS:  
KANSAS ONE-CALL 1-800-344-7233  
OR 687-2470 (LOCAL WICHITA)  
THE CONTRACTOR MUST NOTIFY THE FOLLOWING IN CASE OF AN EMERGENCY:  

SBC (TELEPHONE)	800-870-8390
COX COMMUNICATIONS (CABLE)	262-0661
WESTAR (ELECTRIC)	393-8600
KANSAS GAS SERVICE (GAS)	832-3101
CITY OF WICHITA WATER & SEWER MAINT.	262-6000
BLACK HILLS ENERGY (GAS)	800-303-0357
- THE CONTRACTOR SHALL BE RESPONSIBLE FOR PRESERVING PROPERTY IRONS. THE CONTRACTOR WILL BE REQUIRED TO RE-ESTABLISH ANY PROPERTY IRONS WHICH ARE DAMAGED OR DESTROYED BY HIS CONSTRUCTION OPERATIONS. SUCH IRONS SHALL BE RE-ESTABLISHED BY A LICENSED LAND SURVEYOR IN ACCORDANCE WITH STATE LAWS.
- EXISTING UTILITIES AND THEIR LOCATIONS, AS SHOWN ON THE PLANS REPRESENT THE BEST INFORMATION OBTAINABLE FOR DESIGN. LOCATION INFORMATION HAS BEEN OBTAINED FROM THE VARIOUS UTILITY COMPANIES AND IS EITHER FROM COMPANY RECORD DRAWINGS OR COMPANY PROVIDED FIELD LOCATIONS. THE PLAN LOCATIONS SHOWN ARE NOT GUARANTEED. ADDITIONAL EXISTING UTILITIES MAY ALSO BE ENCOUNTERED.
- RUBBLE FROM THE REMOVAL OF MISCELLANEOUS STRUCTURES AND EXCESS EXCAVATION WHICH IS TO BE WASTED SHALL BE DISPOSED OF ON SITES TO BE PROVIDED BY THE CONTRACTOR. THESE SITES SHALL BE APPROVED BY THE ENGINEER AS TO SUITABILITY, APPEARANCE AND SITE LOCATION. LOCATIONS THAT, IN THE OPINION OF THE ENGINEER, WILL LEAVE AN UNSIGHTLY APPEARANCE WILL NOT BE APPROVED. ALL DISPOSAL SITES MUST BE APPROVED BY THE KANSAS DEPARTMENT OF HEALTH AND FLOOD PLAIN WOULD REQUIRE A KANSAS STATE BOARD OF AGRICULTURE PERMIT. ANY MATERIAL DUMPED IN WATERS OF THE UNITED STATES OR WETLANDS IS SUBJECT TO U.S. CORPS OF ENGINEERS PERMITTING REGULATIONS. ANY MATERIAL BURIED OR STOCKPILED BEYOND APPROVED CONSTRUCTION LIMITS WOULD REQUIRE ADDITIONAL ARCHAEOLOGICAL INVESTIGATIONS UNLESS BURIED IN A PREVIOUSLY APPROVED BORROW LOCATION.
- A SAW CUT OF AT LEAST ONE-HALF THE DEPTH OF THE EXISTING SURFACE COURSES OR ONE-FOURTH THE DEPTH OF THE EXISTING TOTAL PAVEMENT THICKNESS SHALL BE PROVIDED AT LOCATIONS WHERE PROPOSED CONSTRUCTION ABUTS AN EXISTING SURFACE OR PAVEMENT FOR WHICH PARTIAL REMOVAL OF THAT SURFACE OR PAVEMENT IS REQUIRED. SAW JOINT TO FACILITATE REMOVAL WITHIN THREE (3) FEET OF EXISTING JOINTS WILL NOT BE PERMITTED AND FOR SUCH INSTANCES THE LIMITS OF REMOVAL SHALL EXTEND TO THE EXISTING JOINT. SUCH SAW CUTS WILL NOT BE PAID FOR DIRECTLY AND THIS COST SHALL BE CONSIDERED AS SUBSIDIARY TO THE REMOVAL OF SURFACE OR PAVEMENT.
- ALL STATIONING, RADII, PAVEMENT WIDTHS, OFFSET DISTANCES, ETC. ARE MEASURED TO THE BACK OF CURB AND ALONG THE PROJECT BASELINE UNLESS OTHERWISE NOTED. SPOT ELEVATIONS ON PLAN SHEETS ARE AT BACK OF FULL HEIGHT CURB AND GUTTER.
- ALL AREAS DISTURBED BY CONSTRUCTION THAT ARE ADJACENT TO DEVELOPED PROPERTIES SHALL BE RESTORED WITH SOD TO MATCH EXISTING TURF TYPE. RESTORATION OF DISTURBED AREAS SHALL INCLUDE BUT NOT BE LIMITED TO, TOP SOIL PREPARATION AND SODDING. ALL SODDING WORK SHALL BE IN ACCORDANCE WITH CITY STANDARD SPECIFICATIONS AND CITY ADMINISTRATIVE REGULATION NO. AR6.5, WHICH GOVERNS CLEANUP AND RESTORATION OR REPLACEMENT FOLLOWING CONSTRUCTION. WHEN THE WEATHER/SEASON PREVENTS THE INSTALLATION OF SOD, THE CONTRACTOR SHALL BE RESPONSIBLE FOR INSTALLING EROSION CONTROL BLANKET (CURLEX 1, OR APPROVED EQUAL) AT THE BACK OF CURB (8' WIDE MINIMUM). ALL COSTS FOR EROSION MAT INSTALLATION SHALL BE SUBSIDIARY TO "SITE RESTORATION".
- EXISTING UTILITY VAULTS, RISERS, VALVES, ETC. SHALL BE ADJUSTED TO PROPOSED GRADES WHERE IN CONFLICT, WHETHER SPECIFICALLY CALLED OUT OR NOT. WHEN LOCATED IN SIDEWALK OR PAVEMENT AREAS, TOPS SHALL BE SET FLUSH WITH THE SIDEWALK OR PAVEMENT. COST SHALL BE SUBSIDIARY TO PROJECT.
- DEVELOPER FOR THIS PROJECT IS:  
NEWSRING CHURCH, INC.  
9633 SW PINE ROAD  
WICHITA, KS 67202  
BILLY POORE  
(316)630-8500



### INDEX TO DRAWINGS

SHEET NO.	DESCRIPTION
1	TITLE SHEET
2-5	PAVING DETAILS
6	PAVING PLAN
7-9	WATER DETAILS
10	FIRE HYDRANT & VAULT RELOCATION
11	SIGNING & MARKING PLAN
12-16	TRAFFIC CONTROL DETAILS
17-18	TRAFFIC CONTROL PLANS
19-23	BMP SHEETS
24	EROSION CONTROL PLAN
25	BUBBLE MAP
26-27	CROSS SECTIONS
28	FINAL PLAT



### BENCHMARKS

- BM #1 Chiseled square cut onto the north side of the island at the Newspring Church main entrance  
Elevation = 1384.97 (NAVD 88)
- BM #2 Chiseled square cut into the top of curb at the east end of the island on 21st Street, just east of the K-96 interchange.  
Elevation = 1377.34 (NAVD 88)

### EARTHWORK SUMMARY

EXCAVATION	450 C.Y.
*COMPACTED FILL (90%) (TOPSOIL ONLY)	20 C.Y.
* 20% LOSS FACTOR ADDED	
EXCESS MATERIAL TO BE HAULED OFF-SITE. COST SHALL BE SUBSIDIARY TO EXCAVATION.	



PAVING PLANS FOR  
**MESSIAH BAPTIST CHURCH 4TH ADDITION**  
21ST STREET RIGHT TURN LANE

©2013 MKEC Engineering All Rights Reserved  
www.mkec.com  
These drawings and their contents, including, but not limited to, all concepts, designs, & ideas are the exclusive property of MKEC Engineering (MKEC), and may not be used or reproduced in any way without the express consent of MKEC.

### TITLE SHEET

PROJECT NO.	472-85168	
DATE	JULY 2014	
SCALE	AS NOTED	
DESIGNED	DRAWN	CHECKED
SPE	SPE	GJA
NO.	REVISION	DATE
SHEET NO.		
1 OF 28		