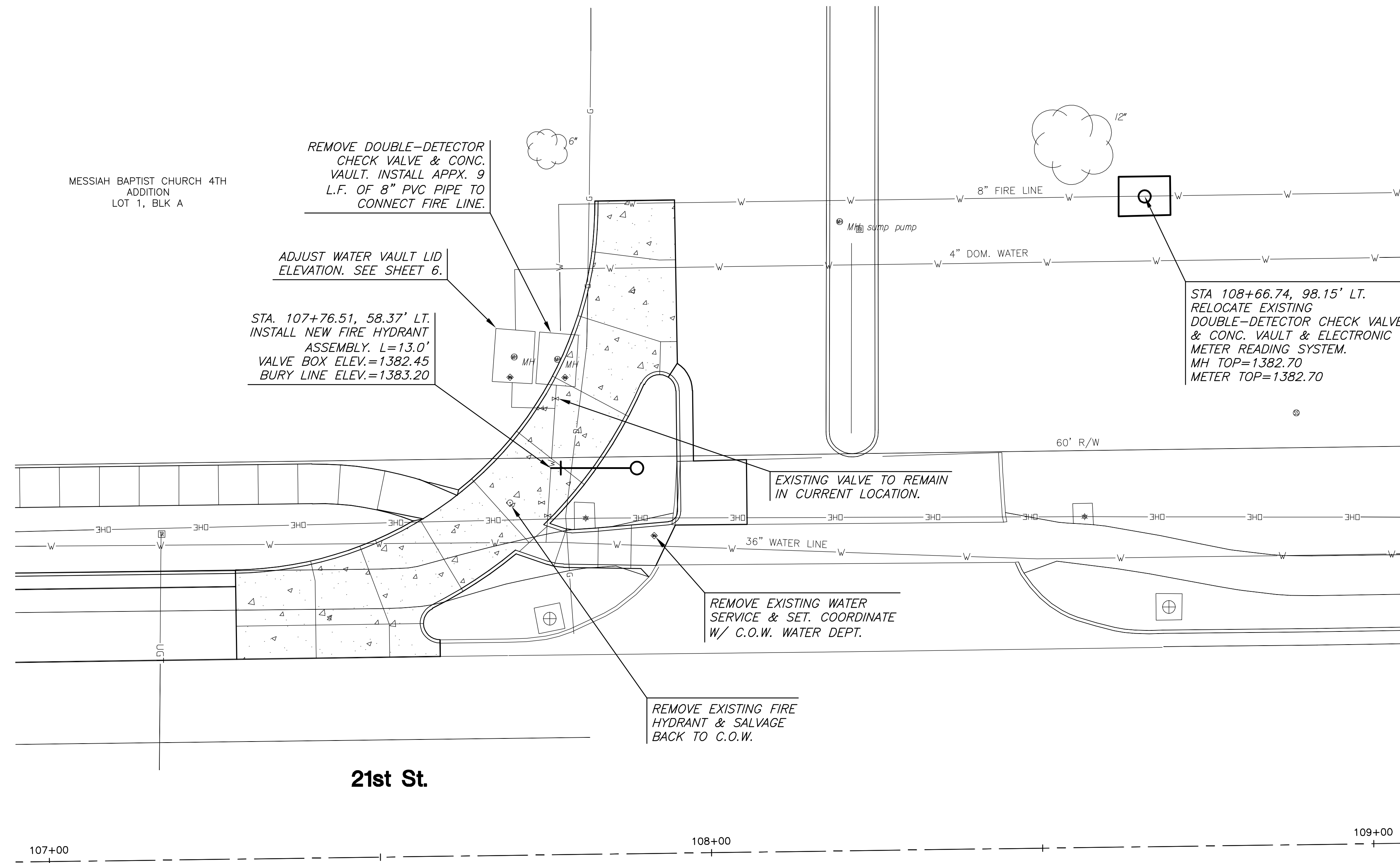
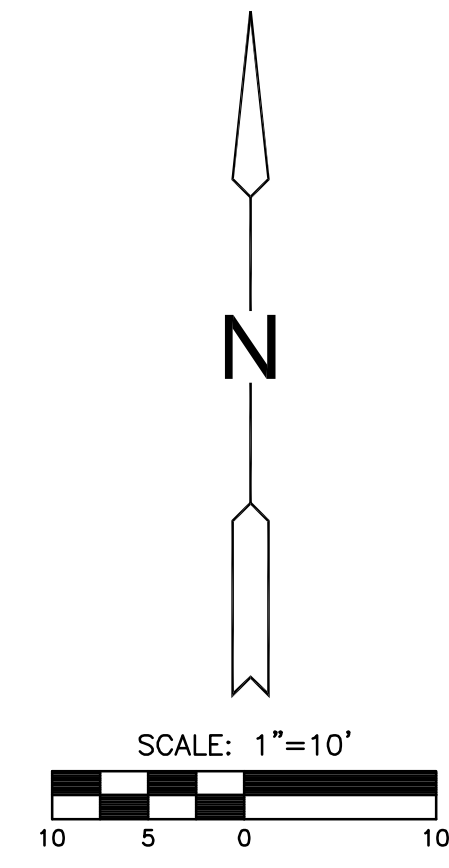


PAVING PLANS FOR  
**MESSIAH BAPTIST CHURCH 4TH ADDITION**  
21ST STREET RIGHT TURN LANE



- NOTE:**
1. CONTRACTOR TO VERIFY LOCATION AND ELEVATION OF EXIST. WATER LINES PRIOR TO CONSTRUCTION.
  2. WATER LINES WERE DRAWN IN FROM RECORD DRAWINGS. CONTRACTOR TO CONTACT ENGINEER IF THERE ARE DISCREPANCIES.
  3. ALL REMOVAL ITEMS SHALL BE SUBSIDIARY TO SITE CLEARING.



©2013 MKEC Engineering  
All Rights Reserved  
www.mkec.com  
These drawings and their contents, including, but not limited to, all concepts, designs, & ideas are the exclusive property of MKEC Engineering (MKEC), and may not be used or reproduced in any way without the express consent of MKEC.

**FIRE HYDRANT & VAULT RELOCATION**

PROJECT NO.	472-85168	
DATE	JULY 2014	
SCALE	1"=10'	
DESIGNED	DRAWN	CHECKED
SPE	SPE	GJA

NO.	REVISION	DATE

SHEET NO.  
**10 OF 28**

J:\PROJECTS\2013\1301010705\_NEWSPRING\_CHURCHES-CIVIL\CAD\WTR\13706\_C1.DWG